

RETAIL / MOB / OFFICE

2725 N. CLARK ST

CHICAGO, IL 60614

JAMESON.

FOR LEASE



Storefront Retail / Medical Office space in the heart of Lincoln Park. Surrounded by high density residential and critical mass of National, Regional and local tenants.

PROPERTY HIGHLIGHTS

- » Great Curb Appeal
- » 20' of Frontage on Clark Street
- » Surrounded by high income and high density

AREA HIGHLIGHTS

- » One of the busiest intersections in Chicago

AREA TENANTS

- » Stan's Donuts, Wow Bow, Trader Joes, Walgreen's, Snap Kitchen, Starbucks, TJ Maxx, Blue Mercury, Team Rehab.

TRANSPORTATION HIGHLIGHTS

- » CTA, Brown Line, Uber

BUILDING SIZE 1,908 Sq. Ft.

ZONED C-2

TAXES: MG

CAM: MG

LEASE RATE \$34.00

STATISTICS	0.25 Miles	0.5 Miles	1 Mile
Population	7,949	28,349	81,744
Households	5,161	18,086	47,815
Average HHI	\$84,185	\$90,115	\$105,260

JAMESON COMMERCIAL REAL ESTATE

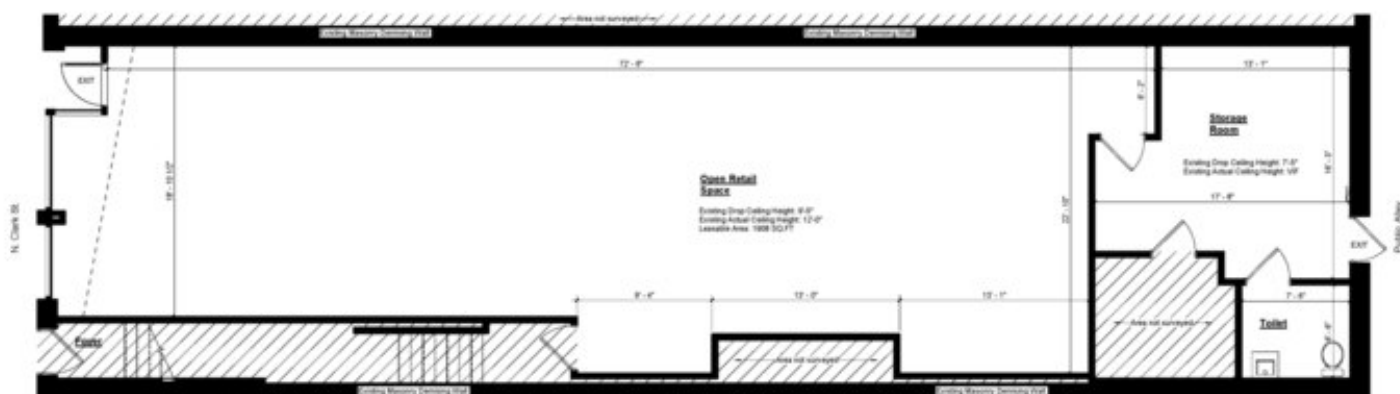
425 West North Avenue | Chicago, IL 60610
www.jamesoncommercial.com

ROBERT JAY FRIEDMAN // Vice President, Sales & Leasing

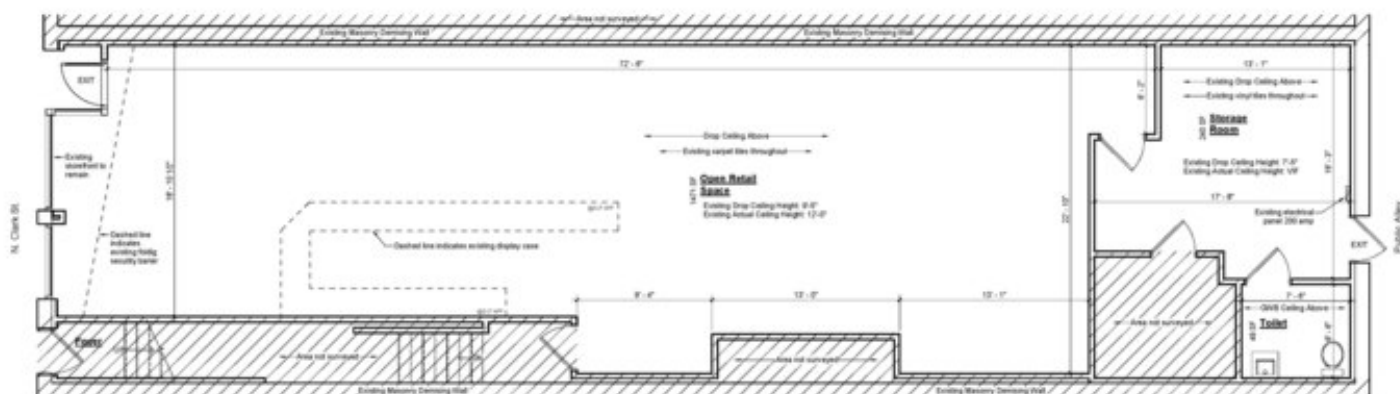
(P) 312.810.7203
rjfsite@jameson.com

©Jameson Real Estate LLC. All information provided herein is from sources deemed reliable. No representation is made as to the accuracy thereof & it is submitted subject to errors, omissions, changes, prior sale or lease, or withdrawal without notice. Projections, opinions, assumptions & estimates are presented as examples only & may not represent actual performance. Consult tax & legal advisors to perform your own investigation.

FLOOR PLAN



2 | First Floor Plan (Mechanical)
18' x 73'0"

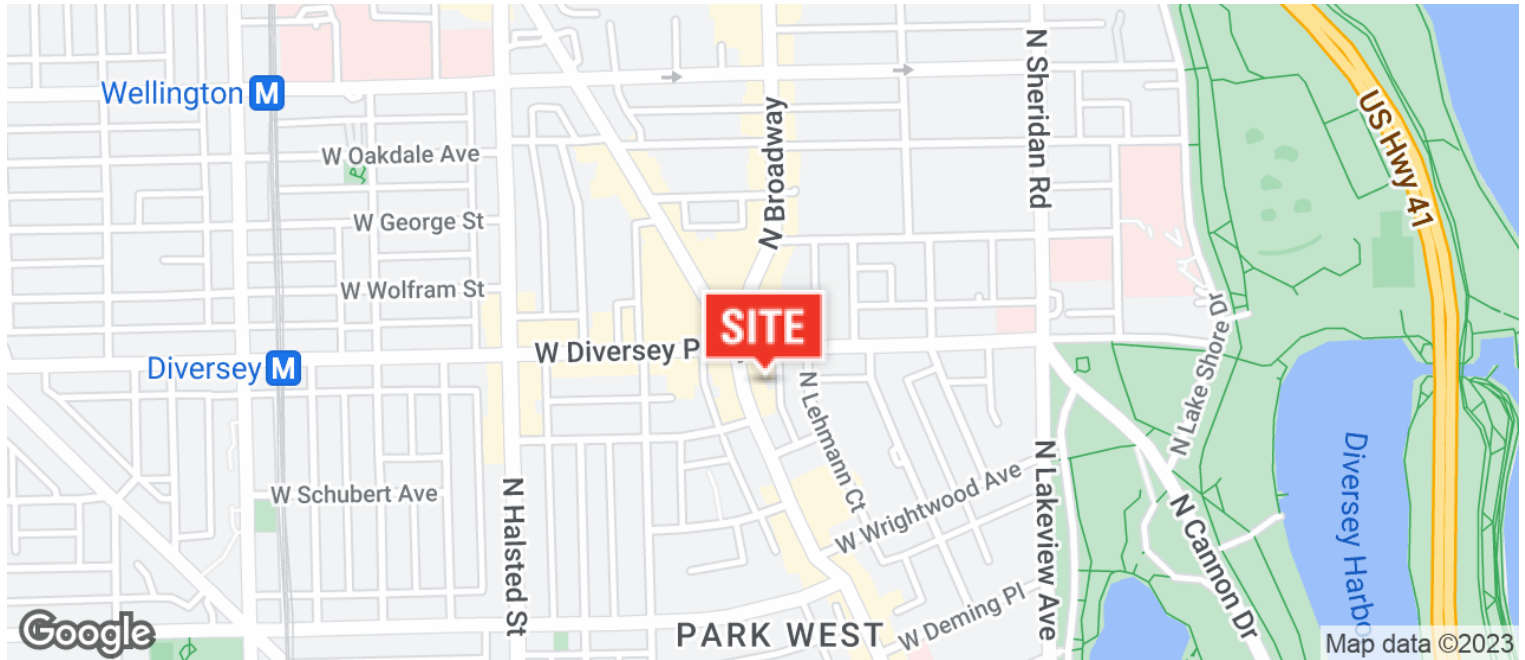


1 | First Floor Plan
18' x 73'0"

AERIAL & STREET DETAIL

2725 N. CLARK ST
CHICAGO, IL 60614

JAMESON.



JAMESON COMMERCIAL REAL ESTATE

425 West North Avenue | Chicago, IL 60610

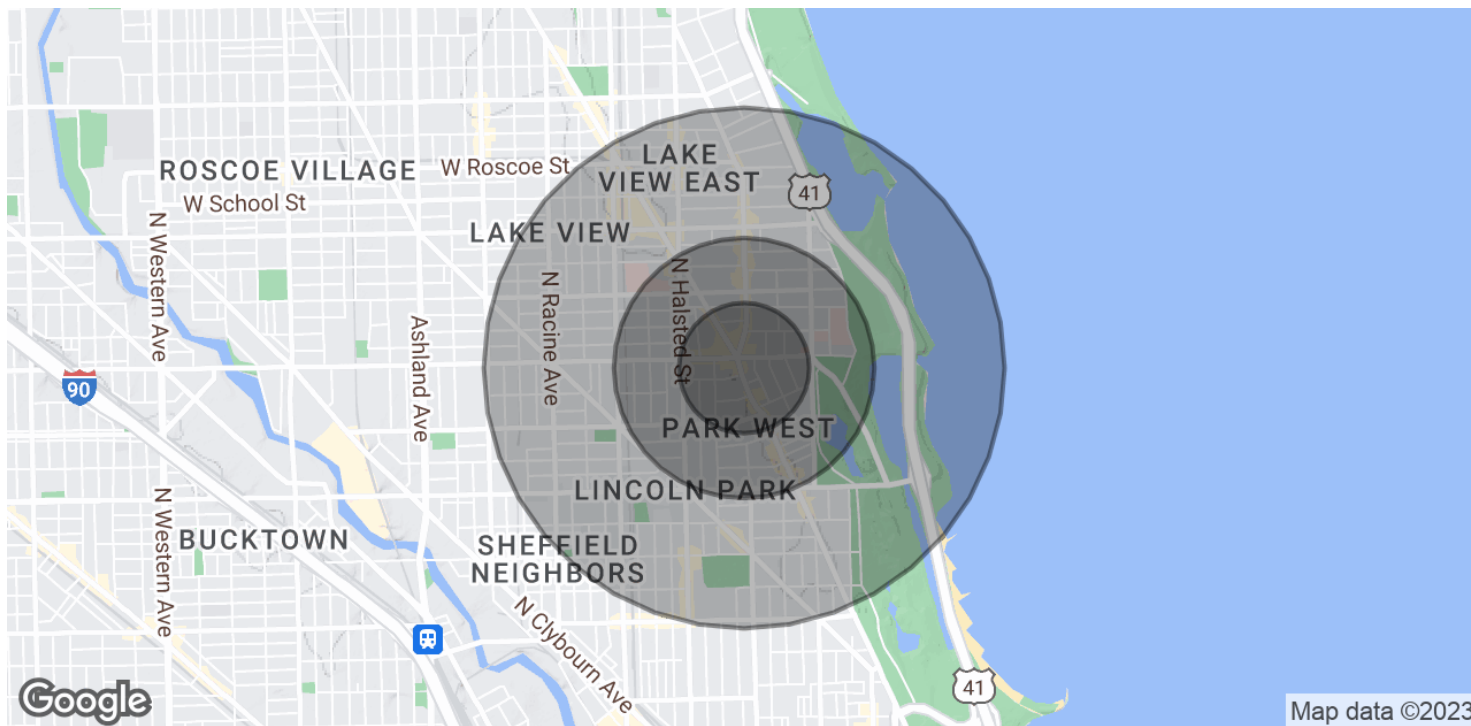
jamesoncommercial.com

©Jameson Real Estate LLC. All information provided herein is from sources deemed reliable. No representation is made as to the accuracy thereof & it is submitted subject to errors, omissions, changes, prior sale or lease, or withdrawal without notice. Projections, opinions, assumptions & estimates are presented as examples only & may not represent actual performance. Consult tax & legal advisors to perform your own investigation.

DEMOGRAPHICS MAP & REPORT

2725 N. CLARK ST
CHICAGO, IL 60614

JAMESON.



POPULATION

	0.25 MILES	0.5 MILES	1 MILE
Total Population	7,949	28,349	81,744
Average age	29.3	29.6	31.0
Average age (Male)	30.4	31.4	32.2
Average age (Female)	28.7	28.7	29.9

HOUSEHOLDS & INCOME

	0.25 MILES	0.5 MILES	1 MILE
Total households	5,161	18,086	47,815
# of persons per HH	1.5	1.6	1.7
Average HH income	\$84,185	\$90,115	\$105,260
Average house value	\$573,734	\$527,405	\$553,194

* Demographic data derived from 2020 ACS - US Census

JAMESON COMMERCIAL REAL ESTATE

425 West North Avenue | Chicago, IL 60610

jamesoncommercial.com

©Jameson Real Estate LLC. All information provided herein is from sources deemed reliable. No representation is made as to the accuracy thereof & it is submitted subject to errors, omissions, changes, prior sale or lease, or withdrawal without notice. Projections, opinions, assumptions & estimates are presented as examples only & may not represent actual performance. Consult tax & legal advisors to perform your own investigation.