

CO-WORKING SPACE: FIRST FLOOR AVAILABLE

2100 MORRIS AVE, BIRMINGHAM, AL 35203

Executive Summary

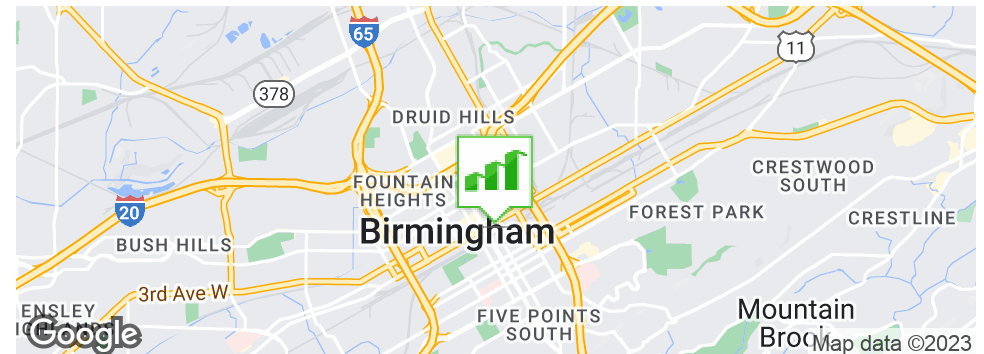


OFFERING SUMMARY

Available SF:	1,313 SF
Lease Rate:	\$1,500.00 per month (Full Service)
Lot Size:	0.08 Acres
Year Built:	1910
Building Size:	7,550 SF
Zoning:	B4

HIGHLIGHTS

- Class A communal workspace with brand new furniture in each office including desks, office chairs, and wall shelves
- Fits up to five people
- Monthly rent includes utilities, janitorial services, fiber internet and printer, copier, and scanner are available for use
- 24-hour secure access with entrance on Morris Avenue
- Two large, upscale conference rooms available for scheduled use
- Ideal location between Richard Arrington and 22nd Street bridges into and out of downtown, between new developments Founders Station and Mercantile on Morris



SIMS HERRON

919.448.1474
sherron@mcrmpm.com

MOORE COMPANY REALTY

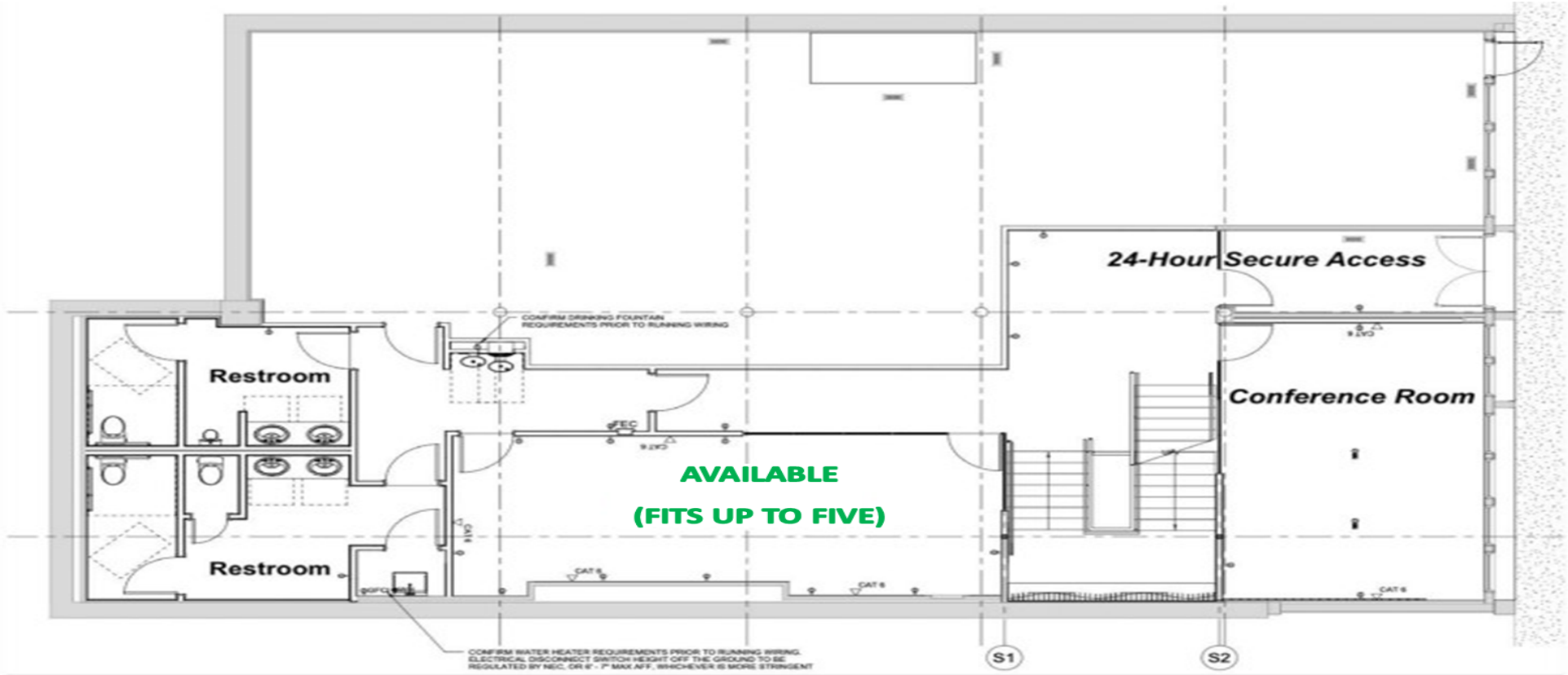
312 Catoma St #200, Montgomery, AL 36104
334.262.1958 | moorecompanyrealty.com



CO-WORKING SPACE: FIRST FLOOR AVAILABLE

First Floor

2100 MORRIS AVE, BIRMINGHAM, AL 35203



AVAILABLE SPACES

SUITE	TENANT	SIZE (SF)	LEASE TYPE	LEASE RATE
2100 Morris Ave	Available	1,313 SF	Full Service	\$1,500 per month

SIMS HERRON

919.448.1474
sherron@mcrmpm.com

MOORE COMPANY REALTY

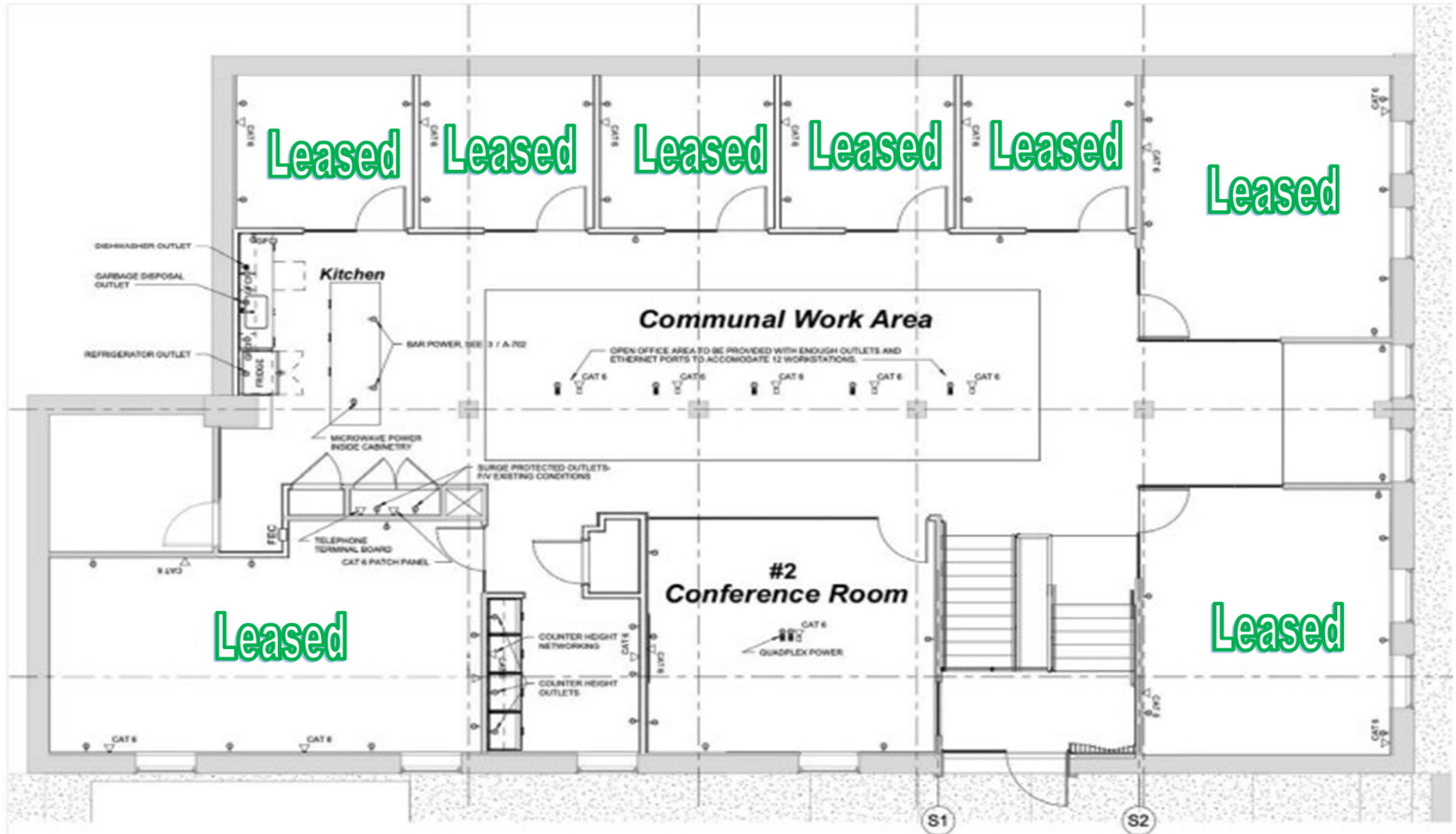
312 Catoma St #200, Montgomery, AL 36104
334.262.1958 | moorecompanyrealty.com



CO-WORKING SPACE: FIRST FLOOR AVAILABLE

2100 MORRIS AVE, BIRMINGHAM, AL 35203

Second Floor



SIMS HERRON

919.448.1474
sherron@mcrmpm.com

MOORE COMPANY REALTY

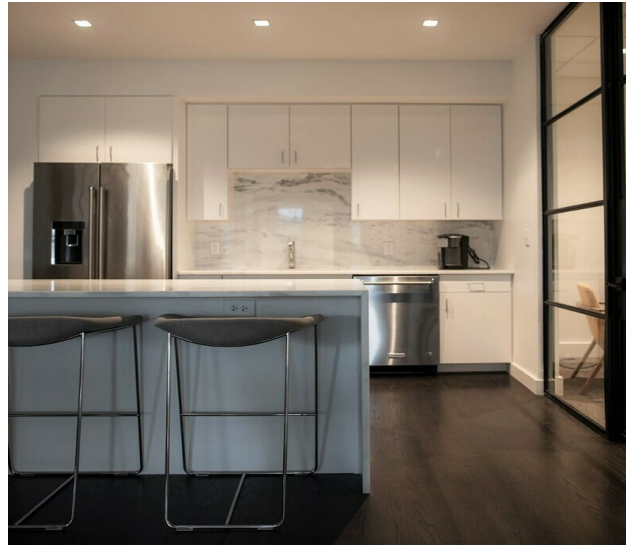
312 Catoma St #200, Montgomery, AL 36104
334.262.1958 | moorecompanyrealty.com



CO-WORKING SPACE: FIRST FLOOR AVAILABLE

2100 MORRIS AVE, BIRMINGHAM, AL 35203

Additional Photos



SIMS HERRON

919.448.1474
sherron@mcrmpm.com

MOORE COMPANY REALTY

312 Catoma St #200, Montgomery, AL 36104
334.262.1958 | moorecompanyrealty.com



DEMOGRAPHIC SUMMARY

2100 Morris Ave, Birmingham, Alabama, 35203

Ring of 10 miles

KEY FACTS

443,079

Population



188,514

Households

38.7

Median Age

\$48,022

Median Disposable Income

EDUCATION

7%

No High School Diploma



24%

High School Graduate



26%

Some College



43%

Bachelor's/Grad/Prof Degree

INCOME



\$57,599

Median Household Income



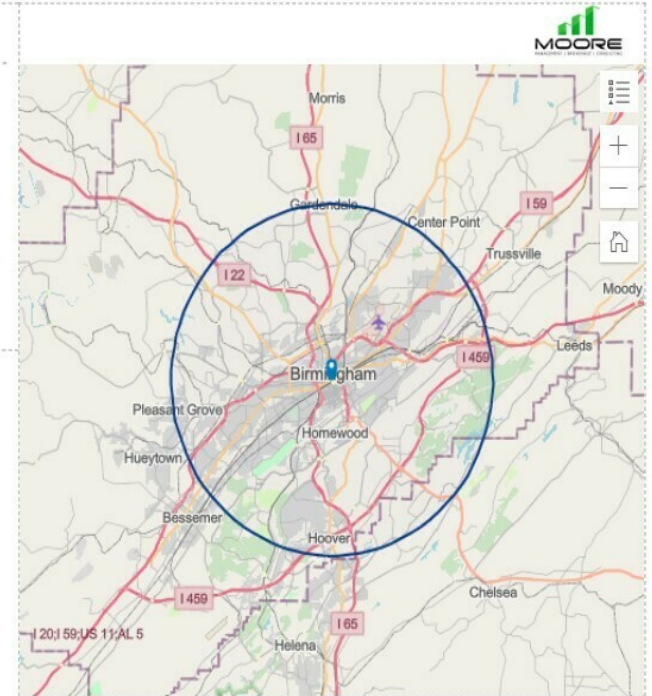
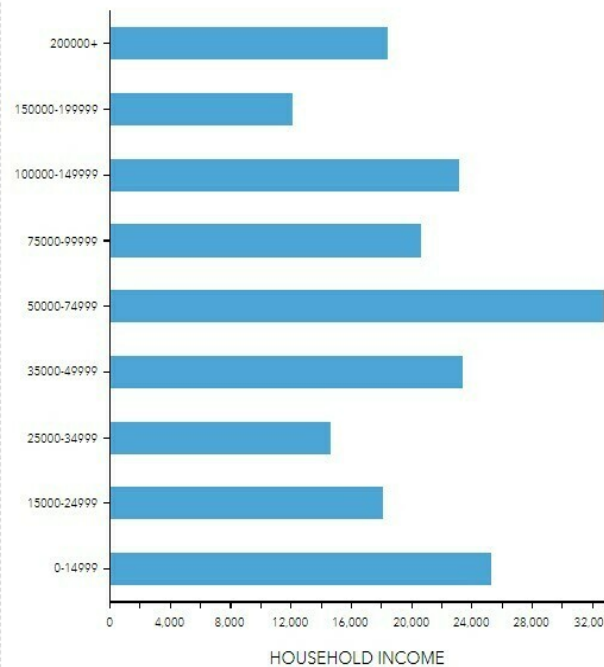
\$41,917

Per Capita Income



\$87,076

Median Net Worth



EMPLOYMENT



White Collar

69%



Blue Collar

17%



Services

16%

4.0%

Unemployment Rate

Source: Esri. The vintage of the data is 2023, 2028.

© 2023 Esri

SIMS HERRON

919.448.1474

sherron@mcrmpm.com

MOORE COMPANY REALTY

312 Catoma St #200, Montgomery, AL 36104

334.262.1958 | moorecompanyrealty.com



CO-WORKING SPACE: FIRST FLOOR AVAILABLE

2100 MORRIS AVE, BIRMINGHAM, AL 35203

Retail Map



SIMS HERRON

919.448.1474

sherron@mcrrmpm.com

MOORE COMPANY REALTY

312 Catoma St #200, Montgomery, AL 36104

334.262.1958 | moorecompanyrealty.com

MOORE
MANAGEMENT | BROKERAGE | CONSULTING