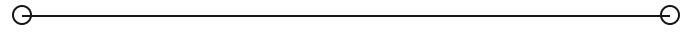


**LAND FOR SALE**

# Midway Road and Sleepy Hollow

**SOCIAL HILL**

Social Hill , AR 72104



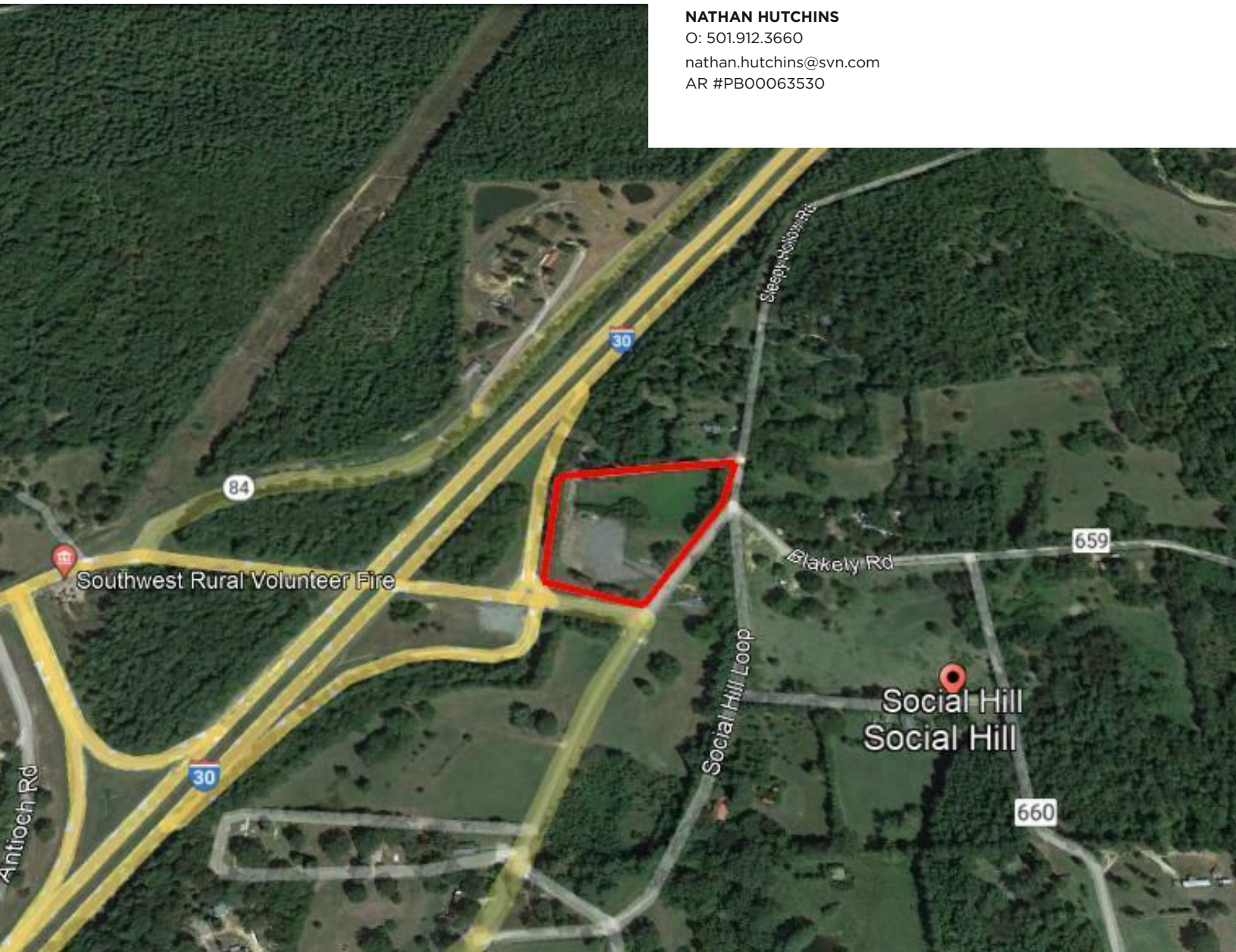
**PRESENTED BY:**

**NATHAN HUTCHINS**

O: 501.912.3660

nathan.hutchins@svn.com

AR #PB00063530





PROPERTY SUMMARY



OFFERING SUMMARY

SALE PRICE:	\$637,719
LOT SIZE:	4.88 Acres
PRICE / ACRE:	\$130,680

PROPERTY OVERVIEW

Located off of I-30 off Old Military Rd. Nestled in the heart of Social Hill, this prime location offers an excellent opportunity for a C-store or retail center investor. With close proximity to local attractions like the Social Hill Park and the bustling Social Hill Square, the area presents an exciting opportunity for businesses to develop and cater to the local and traveling population.

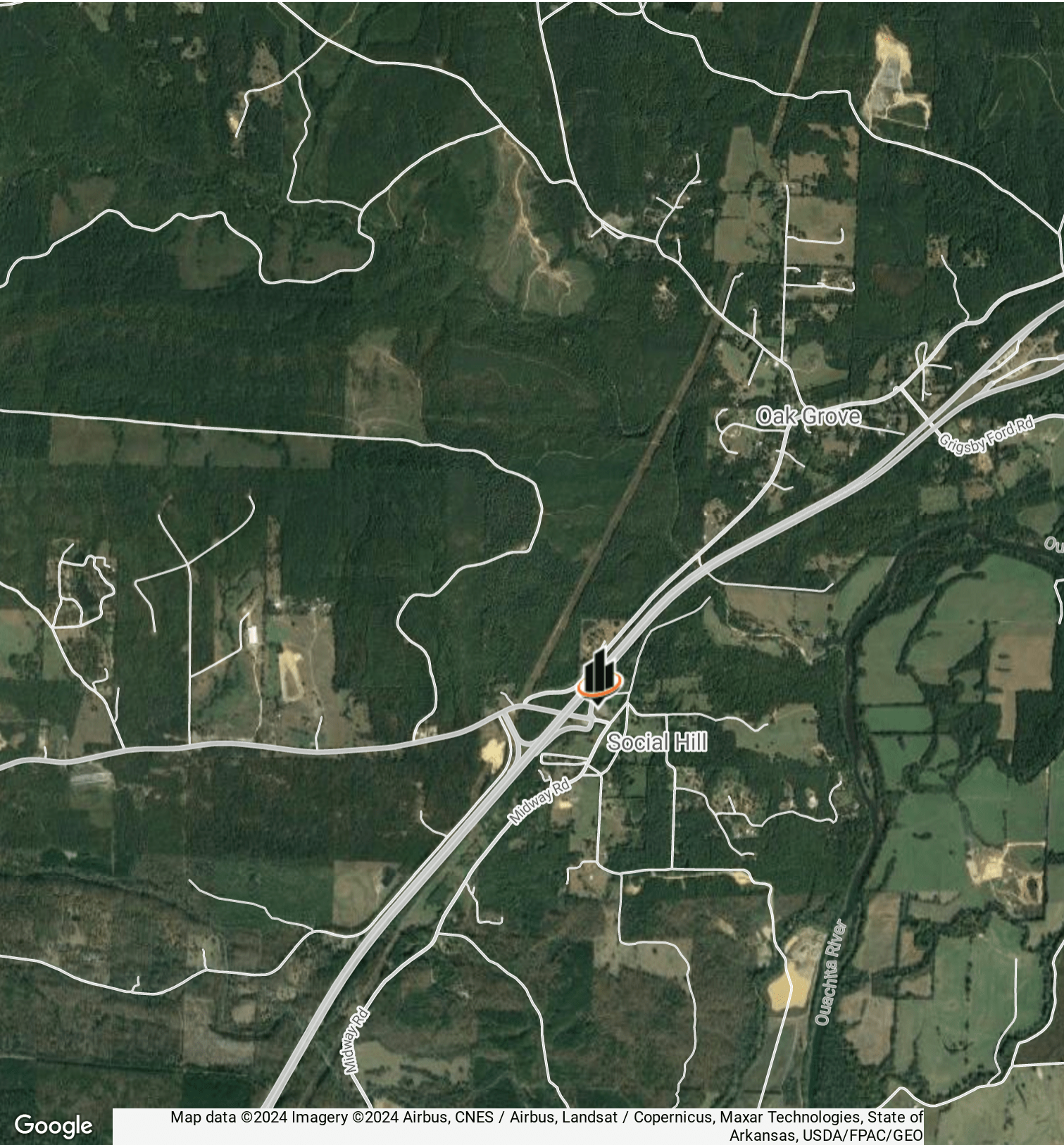
PROPERTY HIGHLIGHTS

- I-30 Visibility after clearing of tree line on property.
- Cleared and level lot ready for construction.
- Utilities on site.
- Ideal location for C-Store and or Retail.
- Easily accessible both East and West bound by large trucks for easy on and off I-30.
- Area is in the "path of progress" with expansion both East and West on I-30.

**NATHAN HUTCHINS**  
O: 501.912.3660  
nathan.hutchins@svn.com  
AR #PB00063530



LOCATION MAP



**NATHAN HUTCHINS**  
O: 501.912.3660  
nathan.hutchins@svn.com  
AR #PB00063530