

**Preliminary  
Former Arcosa Tank Facility  
647 N WW White Road  
San Antonio, TX 78219  
Approximately 232,681 sf on 16.761 acres**



**CONTACT:**

J Holmes Davis IV  
Senior Vice President / Partner  
214.972.2222 (O) | 214.763.3700 (M)  
[hdavis@binswanger.com](mailto:hdavis@binswanger.com)

[www.binswanger.com](http://www.binswanger.com)

**REGIONAL • NATIONAL • INTERNATIONAL REAL ESTATE**

**REGIONAL OPERATIONS:** Atlanta, GA • Charlotte, NC • Chicago, IL • Dallas, TX • Denver, CO • Detroit, MI • King of Prussia, PA • Los Angeles, CA • Melville, NY • Miami, FL • Minneapolis, MN • Nashville, TN • Natick, MA • New York, NY • Newport Beach, CA • Owings Mills, MD • Oxford, MS • Philadelphia, PA • Tampa, FL • Toledo, OH • Washington, D.C. • Woodland Hills, CA • Bangkok • Buenos Aires • Caracas • Hanoi • Hamburg • Lima • London • Madrid • Mexico City • Mumbai • Paris • Quito • Sao Paulo • Santiago • Seoul • Shanghai • Singapore • Tel Aviv • Taipei • Tokyo • Toronto • Warsaw • Zurich

**160 Offices Worldwide**  
North America • South America  
Europe • Middle East  
Asia • Australia  
[www.binswanger.com](http://www.binswanger.com)



AVAILABLE FOR SALE

BUILDING INFORMATION

BUILDING SIZE:	Warehouse: 226,228 sf Office: <u>6,453 sf</u> Total: 232,681 sf
GROUNDS:	Approximately 16.761 acres
NUMBER OF BUILDINGS:	Total of 3 buildings
CONSTRUCTION:	Floors 6"-8" reinforced concrete Walls Insulated metal walls Roof Built up metal deck Columns H-beams
CONSTRUCTION DATE:	1966 – 1969
PROPERTY CONDITION:	Excellent
CEILING HEIGHTS:	Approximately 14'-34'
LIGHTING:	Combination of Fluorescent and LED lighting
POWER:	Supplied by CPS Energy
WATER:	Supplied by City of San Antonio
SEWER:	Supplied by City of San Antonio
NATURAL GAS:	Supplied by CPS Energy
RAIL:	Rail possible
GRADE LEVEL DOORS:	Approximately 15 Grade level
RESTROOMS:	Men and Women's restrooms located throughout both manufacturing and office areas
OFFICE SPACE:	Approximately 6,453 sf of office space
CRANES:	Multiple cranes throughout



**LOCATION DESCRIPTION:**

Ideally located within a block of I-35 and I-410; within minutes of I-10 and I-37; 12 miles from San Antonio International Airport ; 13 miles from the Port of San Antonio; and 162 miles from the city of Laredo

**MAJOR INDUSTRIES IN THE AREA:**

Toyota, HEB Food, Amazon, Dollar General Corp, RIOCO Corp, Maruchan Inc., SpartanNash, Boeing, Pepsi, CH Guenther, Tower Semiconductor, Caterpillar

**2022 TAXES:**

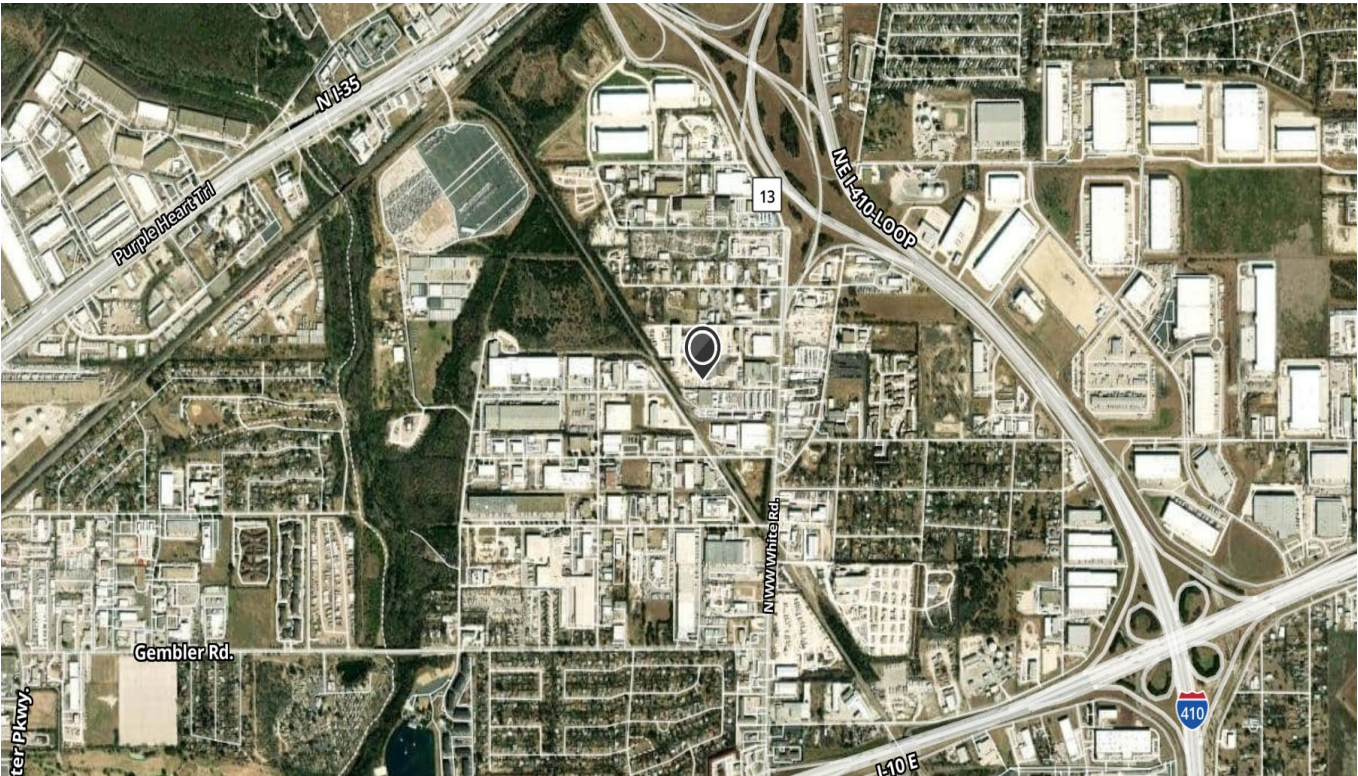
2022 Taxes \$98,244.36





AVAILABLE FOR SALE

LOCATION MAP:

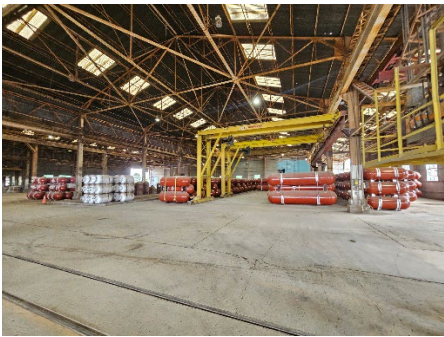






AVAILABLE FOR SALE

PHOTOS:



## SURVEY:

