

**OFFICE PROPERTY // FOR LEASE**

# **MOVE-IN READY 1,953 SF OFFICE SUITE AT KERBY PLACE IN GROSSE POINTE FARMS**

18720 MACK AVE

GROSSE POINTE FARMS, MI 48236



- 1,953 SF Office Suite-Ready for occupancy
- Large/Private Parking Lot
- Under new ownership and management
- Mack Ave signage exposure
- Beautiful common areas with elevator
- Lease rate includes utilities & janitorial - 5 days/week



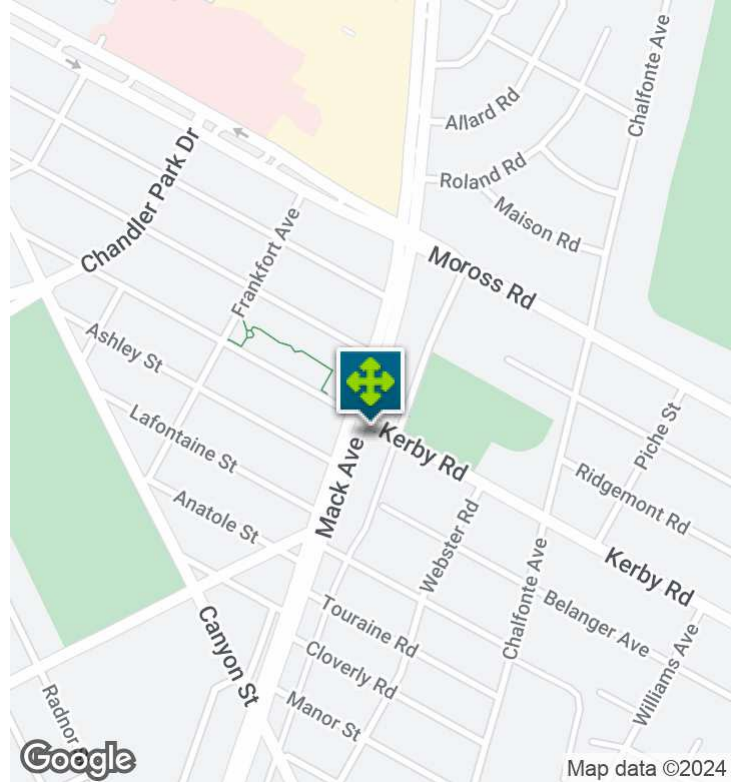
26555 Evergreen Road, Suite 1500  
Southfield, MI 48076  
248.358.0100  
[pacommercial.com](http://pacommercial.com)

We obtained the information above from sources we believe to be reliable. However, we have not verified its accuracy and make no guarantee, warranty or representation about it. It is submitted subject to the possibility of errors, omissions, change of price, rental or other conditions, prior sale, lease or financing, or withdrawal without notice. We include projections, opinions, assumptions or estimates for example only, and they may not represent current, past or future performance of the property. You and your tax and legal advisors should conduct your own investigation of the property and transaction.



18720 MACK AVE, GROSSE POINTE FARMS, MI 48236 // FOR LEASE

## EXECUTIVE SUMMARY



### Lease Rate

**\$4,882.50 PER  
MONTH  
(GROSS)**

### OFFERING SUMMARY

Building Size:	15,396 SF
Available SF:	1,953 SF
Lot Size:	0.7 Acres
Year Built:	1989
Renovated:	2022
Market:	Detroit
Submarket:	The Pointes / Harper Woods

### PROPERTY OVERVIEW

Highly sought-after office building with 1,953 SF of available office space. Office space features four (4) offices, a lobby/spacious open area, and a kitchenette. Excellent opportunity to move your business into a very well-maintained property.

### LOCATION OVERVIEW

Great location in the center of Grosse Pointe Farms, with great corner exposure.

### PROPERTY HIGHLIGHTS

- 1,953 SF Office Suite-Ready for occupancy
- Large/Private Parking Lot
- Under new ownership and management
- Mack Ave signage exposure
- Beautiful common areas with elevator
- Lease rate includes utilities & janitorial - 5 days/week



**P.A. COMMERCIAL**  
Corporate & Investment Real Estate

**Phillip Myers** SENIOR ASSOCIATE  
D: 248.281.9904 | C: 586.242.4047  
phil@pacommercial.com

**John E. De Wald, CPA** PRINCIPAL  
D: 248.663.0504 | C: 313.510.3777  
john@pacommercial.com

We obtained the information above from sources we believe to be reliable. However, we have not verified its accuracy and make no guarantee, warranty or representation about it. It is submitted subject to the possibility of errors, omissions, change of price, rental or other conditions, prior sale, lease or financing, or withdrawal without notice. We include projections, opinions, assumptions or estimates for example only, and they may not represent current, past or future performance of the property. You and your tax and legal advisors should conduct your own investigation of the property and transaction.

18720 MACK AVE, GROSSE POINTE FARMS, MI 48236 // FOR LEASE

## PROPERTY DETAILS

Lease Rate	\$4,882.50 PER MONTH
------------	----------------------

### LOCATION INFORMATION

Building Name	Kerby Place
Street Address	18720 Mack Ave
City, State, Zip	Grosse Pointe Farms, MI 48236
County	Wayne
Market	Detroit
Sub-market	The Pointes / Harper Woods
Cross-Streets	Mack Ave & Kerby

### BUILDING INFORMATION

Building Size	15,396 SF
Building Class	A
Occupancy %	95.0%
Tenancy	Multiple
Number of Floors	2
Year Built	1989
Year Last Renovated	2022
Gross Leasable Area	15,396 SF
Load Factor	12.0
Number of Buildings	1

### PROPERTY INFORMATION

Property Type	Office
Property Subtype	Office Building
Lot Size	0.7 Acres
APN #	38-005-01-0005-003

### PARKING & TRANSPORTATION

Parking Type	Surface
Number of Parking Spaces	65

### UTILITIES & AMENITIES

Security Guard	No
Elevators	Yes
Freight Elevator	No
Central HVAC	Yes
Leed Certified	No



We obtained the information above from sources we believe to be reliable. However, we have not verified its accuracy and make no guarantee, warranty or representation about it. It is submitted subject to the possibility of errors, omissions, change of price, rental or other conditions, prior sale, lease or financing, or withdrawal without notice. We include projections, opinions, assumptions or estimates for example only, and they may not represent current, past or future performance of the property. You and your tax and legal advisors should conduct your own investigation of the property and transaction.

Phillip Myers SENIOR ASSOCIATE

D: 248.281.9904 | C: 586.242.4047

phil@pacommercial.com

John E. De Wald, CPA PRINCIPAL

D: 248.663.0504 | C: 313.510.3777

john@pacommercial.com



18720 MACK AVE, GROSSE POINTE FARMS, MI 48236 // FOR LEASE

## ADDITIONAL PHOTOS



**P.A. COMMERCIAL**  
Corporate & Investment Real Estate

**Phillip Myers** SENIOR ASSOCIATE  
D: 248.281.9904 | C: 586.242.4047  
phil@pacommercial.com

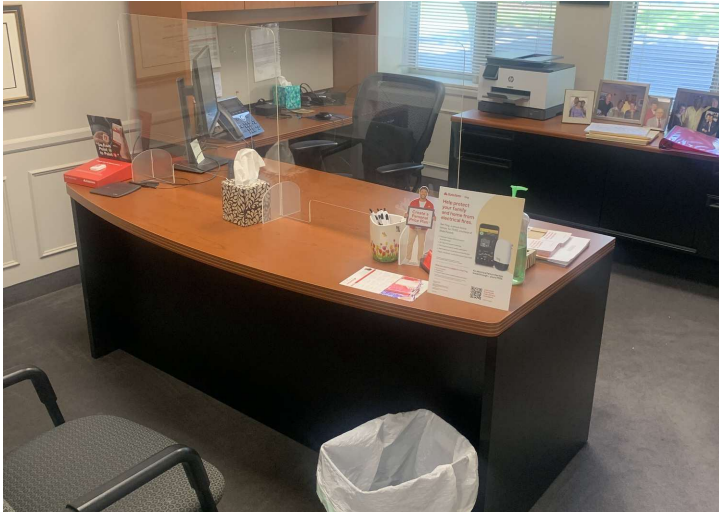
**John E. De Wald, CPA** PRINCIPAL  
D: 248.663.0504 | C: 313.510.3777  
john@pacommercial.com

We obtained the information above from sources we believe to be reliable. However, we have not verified its accuracy and make no guarantee, warranty or representation about it. It is submitted subject to the possibility of errors, omissions, change of price, rental or other conditions, prior sale, lease or financing, or withdrawal without notice. We include projections, opinions, assumptions or estimates for example only, and they may not represent current, past or future performance of the property. You and your tax and legal advisors should conduct your own investigation of the property and transaction.



18720 MACK AVE, GROSSE POINTE FARMS, MI 48236 // FOR LEASE

SUITE 110 // ADDITIONAL PHOTOS



**P.A. COMMERCIAL**  
Corporate & Investment Real Estate

**Phillip Myers** SENIOR ASSOCIATE  
D: 248.281.9904 | C: 586.242.4047  
phil@pacommercial.com

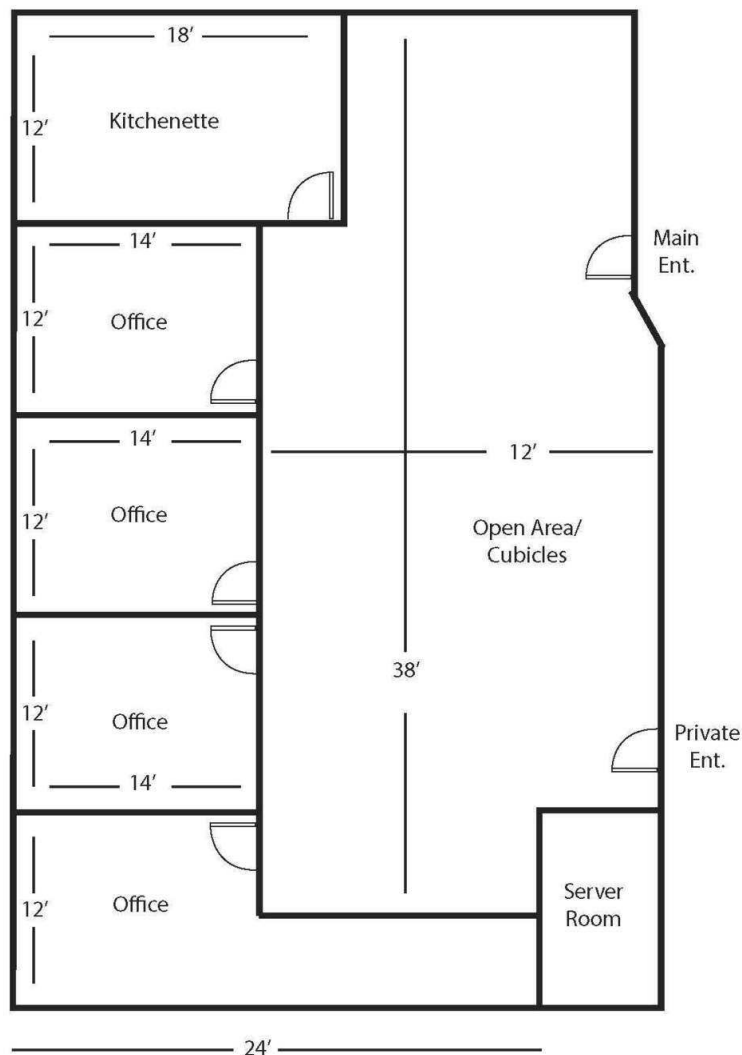
**John E. De Wald, CPA** PRINCIPAL  
D: 248.663.0504 | C: 313.510.3777  
john@pacommercial.com

We obtained the information above from sources we believe to be reliable. However, we have not verified its accuracy and make no guarantee, warranty or representation about it. It is submitted subject to the possibility of errors, omissions, change of price, rental or other conditions, prior sale, lease or financing, or withdrawal without notice. We include projections, opinions, assumptions or estimates for example only, and they may not represent current, past or future performance of the property. You and your tax and legal advisors should conduct your own investigation of the property and transaction.



18720 MACK AVE, GROSSE POINTE FARMS, MI 48236 // FOR LEASE

## SUITE 110 // FLOOR PLAN



Suite 110



**P.A. COMMERCIAL**  
Corporate & Investment Real Estate

**Phillip Myers** SENIOR ASSOCIATE

D: 248.281.9904 | C: 586.242.4047

phil@pacommercial.com

**John E. De Wald, CPA** PRINCIPAL

D: 248.663.0504 | C: 313.510.3777

johnd@pacommercial.com

We obtained the information above from sources we believe to be reliable. However, we have not verified its accuracy and make no guarantee, warranty or representation about it. It is submitted subject to the possibility of errors, omissions, change of price, rental or other conditions, prior sale, lease or financing, or withdrawal without notice. We include projections, opinions, assumptions or estimates for example only, and they may not represent current, past or future performance of the property. You and your tax and legal advisors should conduct your own investigation of the property and transaction.



18720 MACK AVE, GROSSE POINTE FARMS, MI 48236 // FOR LEASE

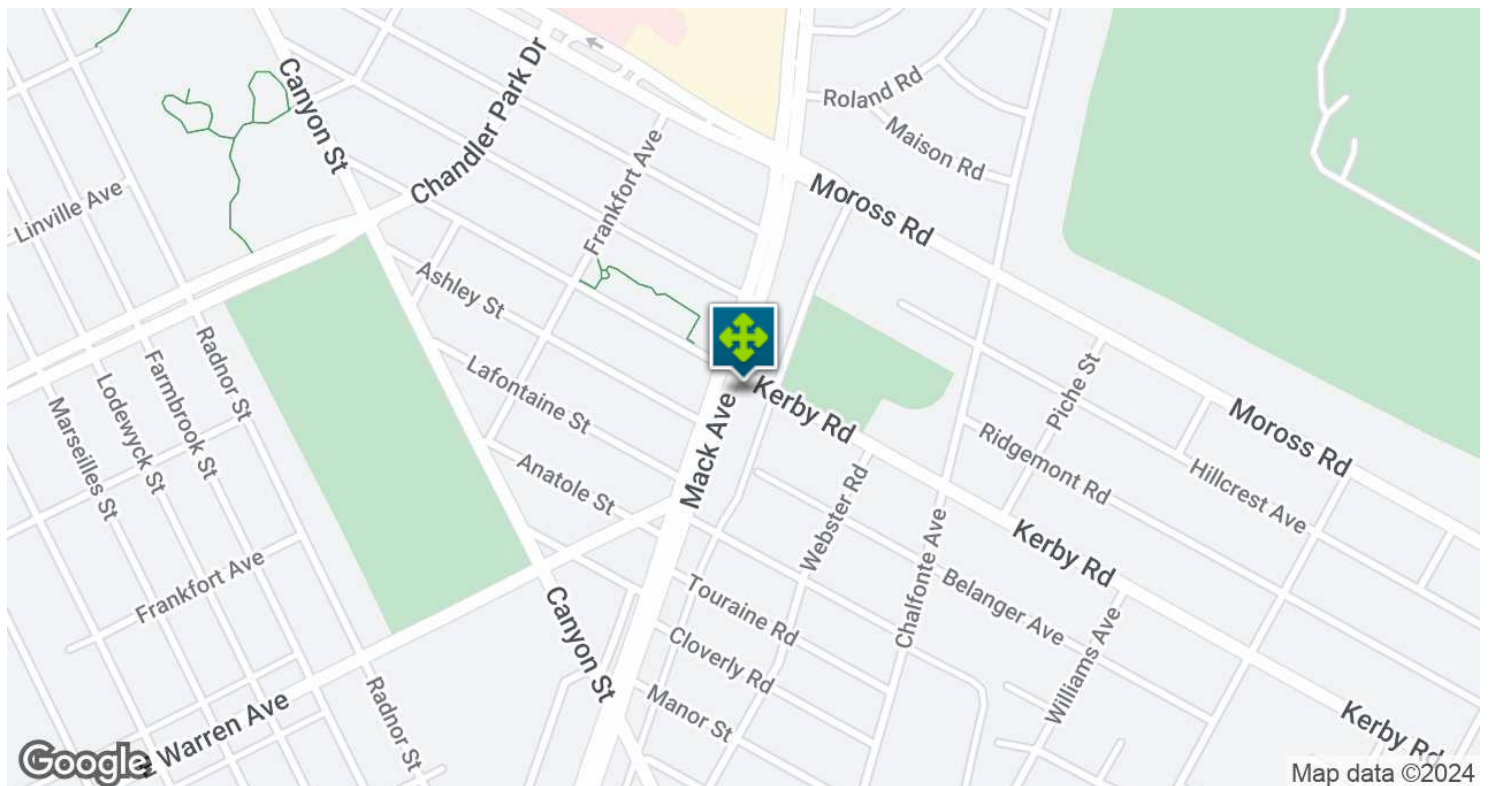
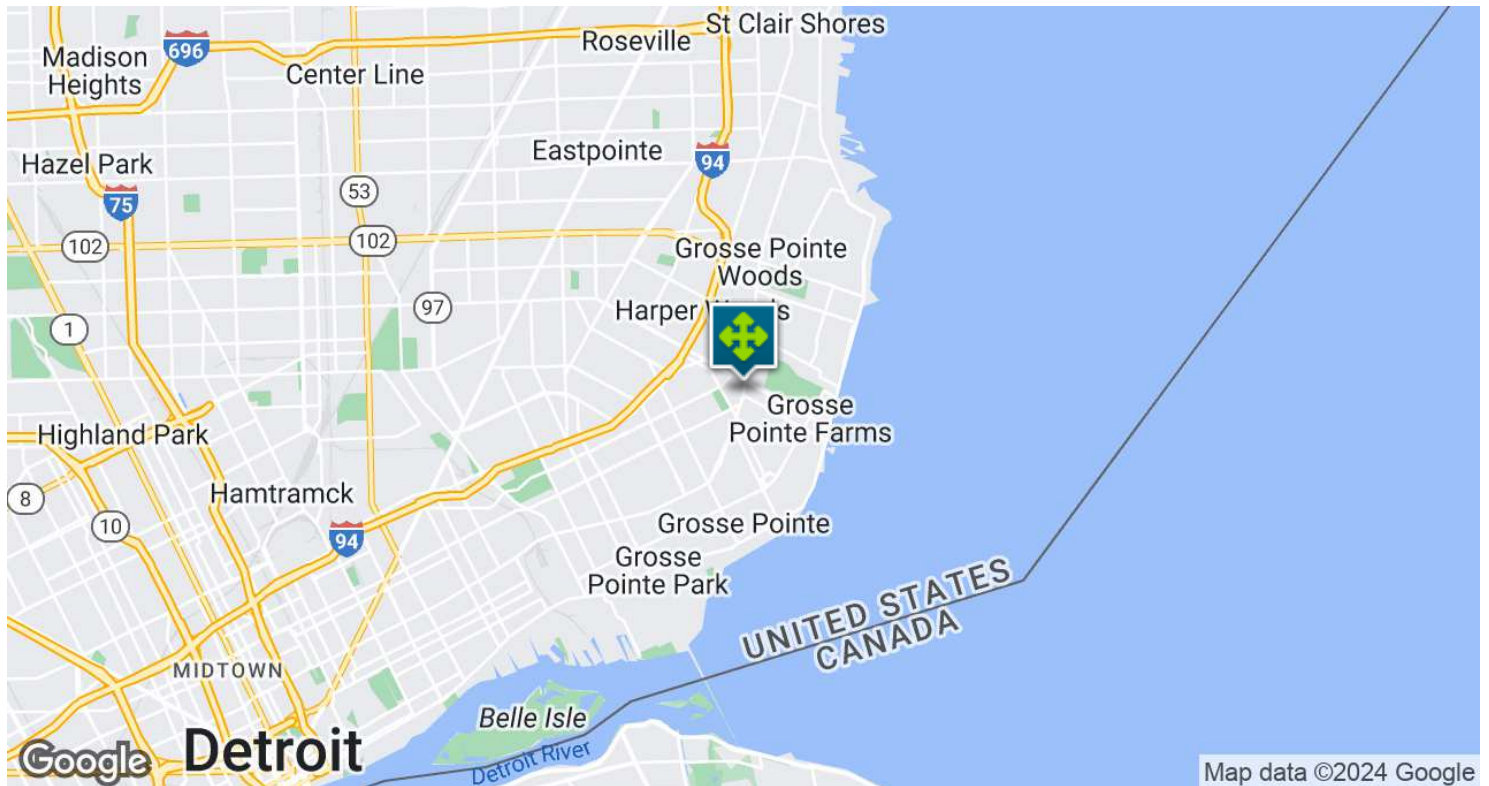
## RETAILER MAP





18720 MACK AVE, GROSSE POINTE FARMS, MI 48236 // FOR LEASE

## LOCATION MAP



**Phillip Myers** SENIOR ASSOCIATE  
D: 248.281.9904 | C: 586.242.4047  
phil@pacommercial.com

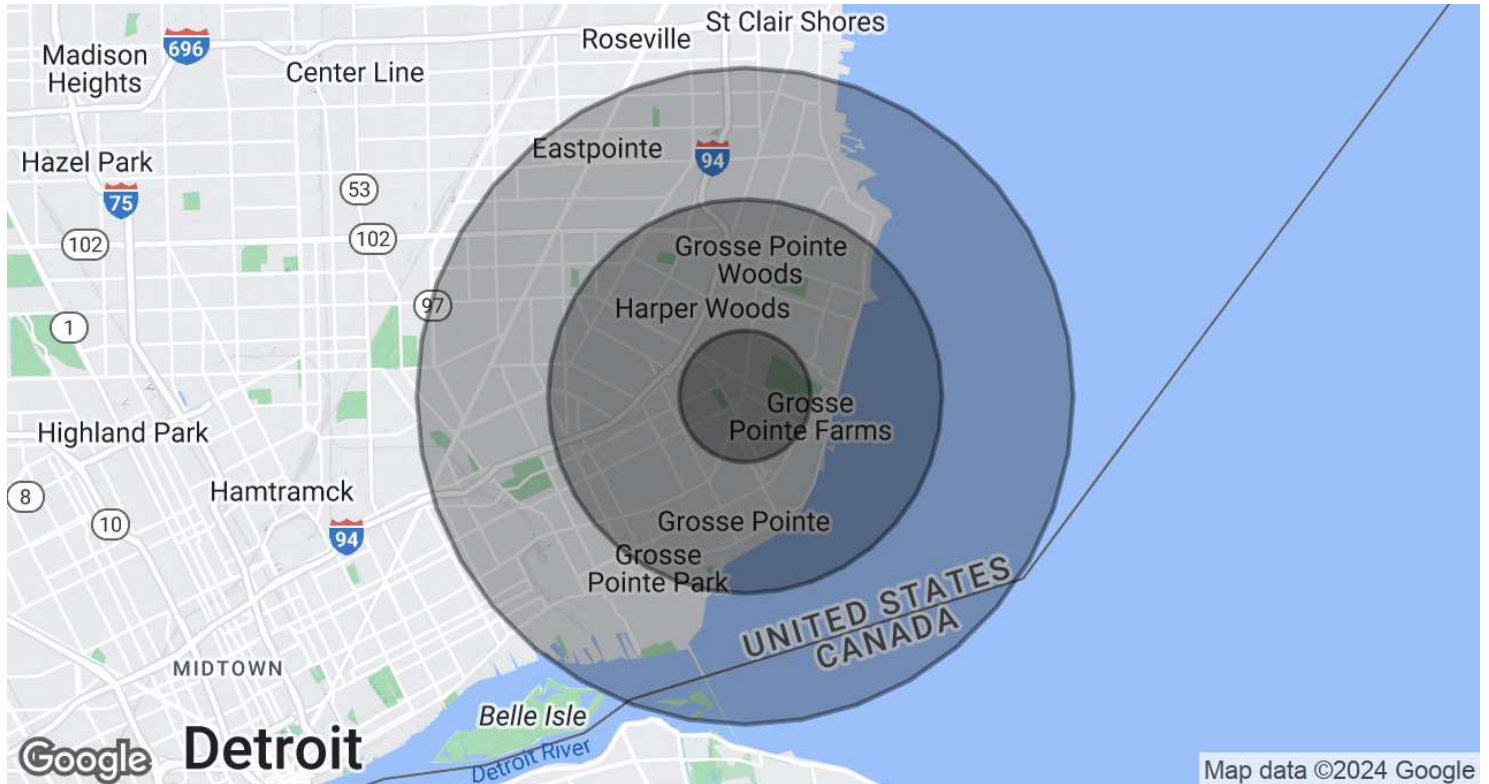
**John E. De Wald, CPA** PRINCIPAL  
D: 248.663.0504 | C: 313.510.3777  
john@pacommercial.com

We obtained the information above from sources we believe to be reliable. However, we have not verified its accuracy and make no guarantee, warranty or representation about it. It is submitted subject to the possibility of errors, omissions, change of price, rental or other conditions, prior sale, lease or financing, or withdrawal without notice. We include projections, opinions, assumptions or estimates for example only, and they may not represent current, past or future performance of the property. You and your tax and legal advisors should conduct your own investigation of the property and transaction.



18720 MACK AVE, GROSSE POINTE FARMS, MI 48236 // FOR LEASE

## DEMOGRAPHICS MAP & REPORT



POPULATION	1 MILE	3 MILES	5 MILES
Total Population	15,117	124,809	270,482
Average Age	39.8	37.3	35.7
Average Age (Male)	39.4	34.7	33.7
Average Age (Female)	40.8	39.4	37.5

HOUSEHOLDS & INCOME	1 MILE	3 MILES	5 MILES
Total Households	5,452	45,177	98,971
# of Persons per HH	2.8	2.8	2.7
Average HH Income	\$91,794	\$79,566	\$63,007
Average House Value	\$227,636	\$230,126	\$184,562

2020 American Community Survey (ACS)



18720 MACK AVE, GROSSE POINTE FARMS, MI 48236 // FOR LEASE

CONTACT US



FOR MORE INFORMATION, PLEASE CONTACT:



**Phillip Myers**  
SENIOR ASSOCIATE  
D: 248.281.9904  
C: 586.242.4047  
phil@pacommercial.com



**John E. De Wald, CPA**  
PRINCIPAL  
D: 248.663.0504  
C: 313.510.3777  
johnd@pacommercial.com

**P.A. Commercial**  
26555 Evergreen Road, Suite 1500  
Southfield, MI 48076

P: 248.358.0100  
F: 248.358.5300

[pacommercial.com](http://pacommercial.com)

Follow Us!



**P.A. COMMERCIAL**  
Corporate & Investment Real Estate

We obtained the information above from sources we believe to be reliable. However, we have not verified its accuracy and make no guarantee, warranty or representation about it. It is submitted subject to the possibility of errors, omissions, change of price, rental or other conditions, prior sale, lease or financing, or withdrawal without notice. We include projections, opinions, assumptions or estimates for example only, and they may not represent current, past or future performance of the property. You and your tax and legal advisors should conduct your own investigation of the property and transaction.