



647 NORTH WW WHITE ROAD
SAN ANTONIO, TX

AVAILABLE FOR SALE OR LEASE
INDUSTRIAL PROPERTY

232,681 SF
16.761 Acres

PROPERTY HIGHLIGHTS

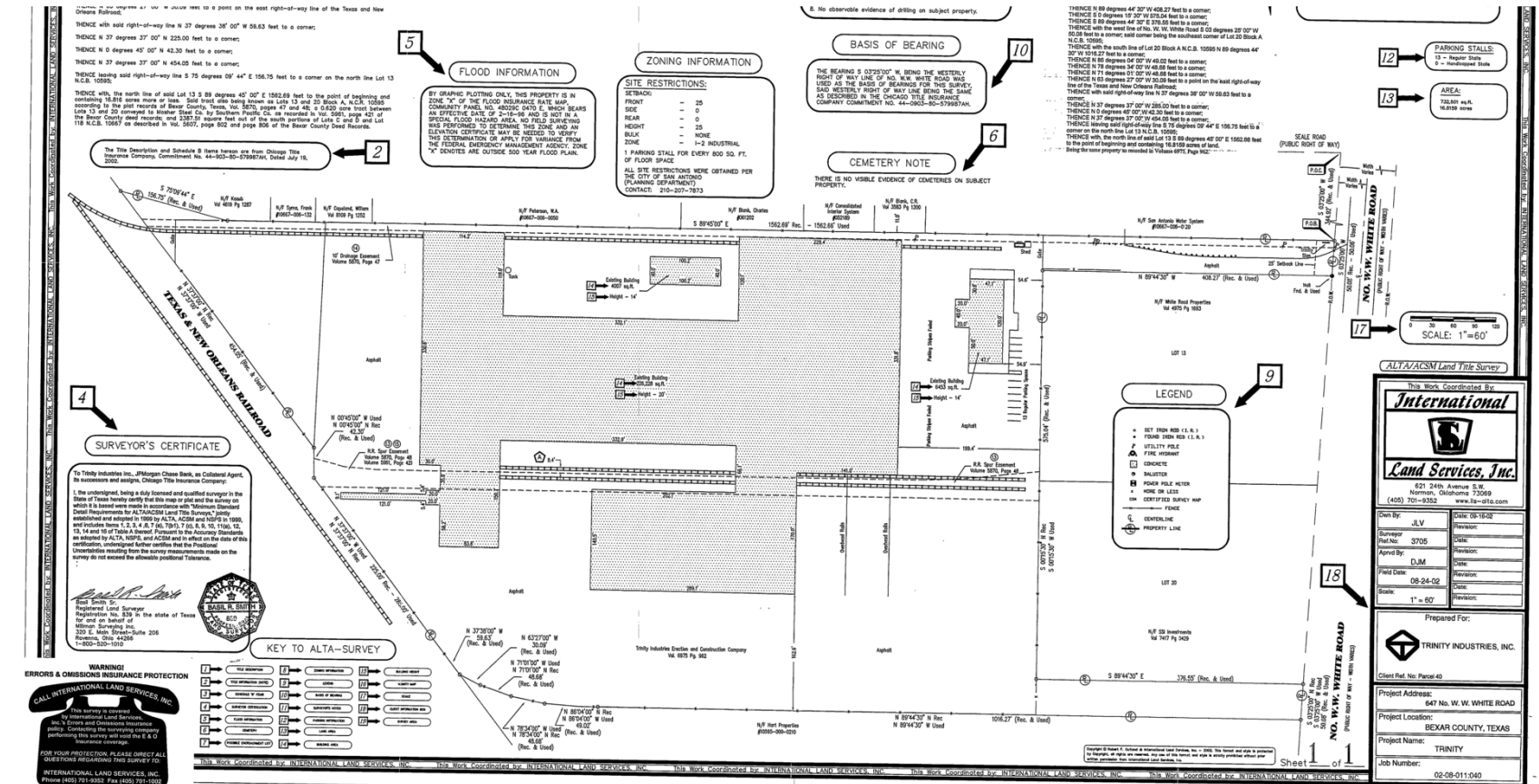
- 226,228 sf Warehouse; 6,451 sf Office Space; Total of 232,681 sf
- Rail possible
- Multiple cranes throughout
- 15 Grade Level doors
- Ceiling heights up to 34'
- 16.761 acres

LOCATION DESCRIPTION

Ideally located within a block of I-35 and I-410; within minutes of I-10 and I-37; 12 miles from San Antonio International Airport; 13 miles from the Port of San Antonio; and 162 miles from the City of Laredo



PLANS



ADDITIONAL PHOTOS



DEMOGRAPHICS MAP & REPORT

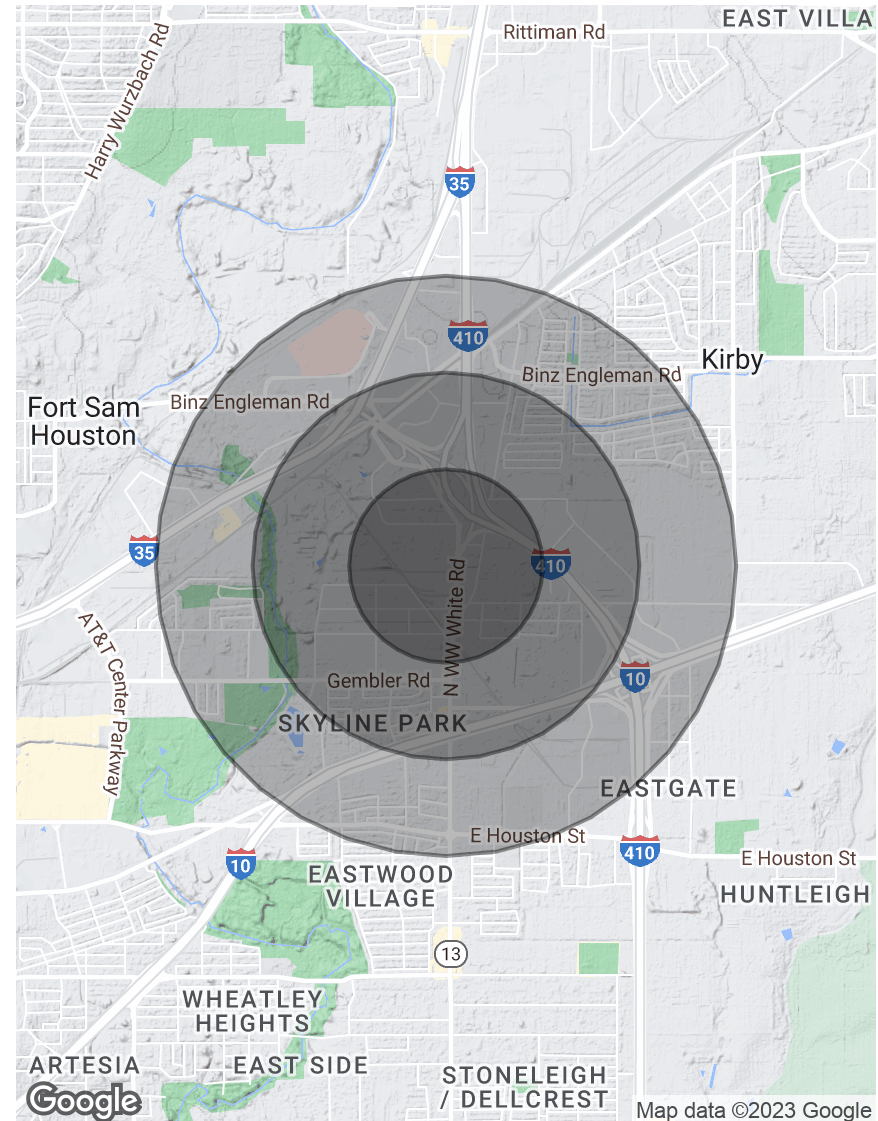
POPULATION

	0.5 MILES	1 MILE	1.5 MILES
Total Population	1,098	5,245	13,098
Average Age	25.6	28.3	33.1
Average Age (Male)	25.6	27.8	31.6
Average Age (Female)	25.1	28.1	34.2

HOUSEHOLDS & INCOME 0.5 MILES 1 MILE 1.5 MILES

Total Households	330	1,551	4,168
# of Persons per HH	3.3	3.4	3.1
Average HH Income	\$43,997	\$47,562	\$48,135
Average House Value	\$93,107	\$90,925	\$101,455

* Demographic data derived from 2020 ACS - US Census



CONTACT



Holmes Davis

Senior Vice President & Partner

214.763.3700

hdavis@binswanger.com



4925 Greenville Avenue, #1348

Dallas, TX 75206
Phone: 214.972.2222
binswanger.com

The information contained herein is from sources deemed reliable, but no warranty or representation is made as to the accuracy thereof and no liability may be imposed.