

**FOR LEASE**

# **GREEN VALLEY CIVIC CENTER**

2501-2651 N. Green Valley Parkway  
Henderson, NV 89014



**Pete Janemark, CCIM**

Senior Vice President

D: 702.527.7923 | C: 702.885.7383

[pete.janemark@svn.com](mailto:pete.janemark@svn.com)

NV #S.76731



# PROPERTY SUMMARY



## OFFERING SUMMARY

BUILDING SIZE:	106,920 SF
AVAILABLE SF:	810 - 10,795 SF
LOT SIZE:	5.96 Acres
ZONING:	CC
APN:	178-06-512-001, 002, 003, 004 and 178-06-510-003

## PROPERTY OVERVIEW

Green Valley Professional Center is conveniently located single story office complex located at the intersection of Green Valley Parkway and Sunset Road in Henderson. The grounds are open and spacious with upgraded landscaping and break areas. The area offers substantial shopping, services and eateries in all direction, many within walking distance. The property is flanked by the Green Valley Library, and the intersection is served by two major bus routes.

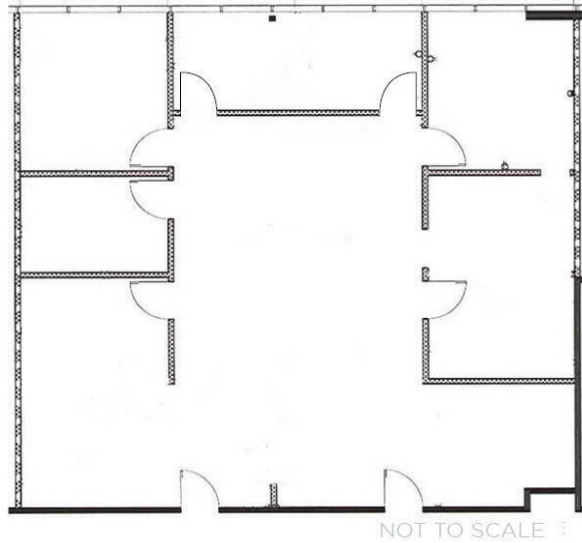
## PROPERTY HIGHLIGHTS

- Signalized entrance
- Ample dedicated parking
- Ample shopping and services
- Central Location

**PETE JANEMARK, CCIM**  
O: 702.527.7923 | C: 702.885.7383  
pete.janemark@svn.com  
NV #S.76731



## 2551 GREEN VALLEY PARKWAY - SUITE 410 - ±2,034 SF



### SUITE DESCRIPTION

This spacious and bright suite features a large open work area, 6 offices with windows, and a conference room.



**PETE JANEMARK, CCIM**

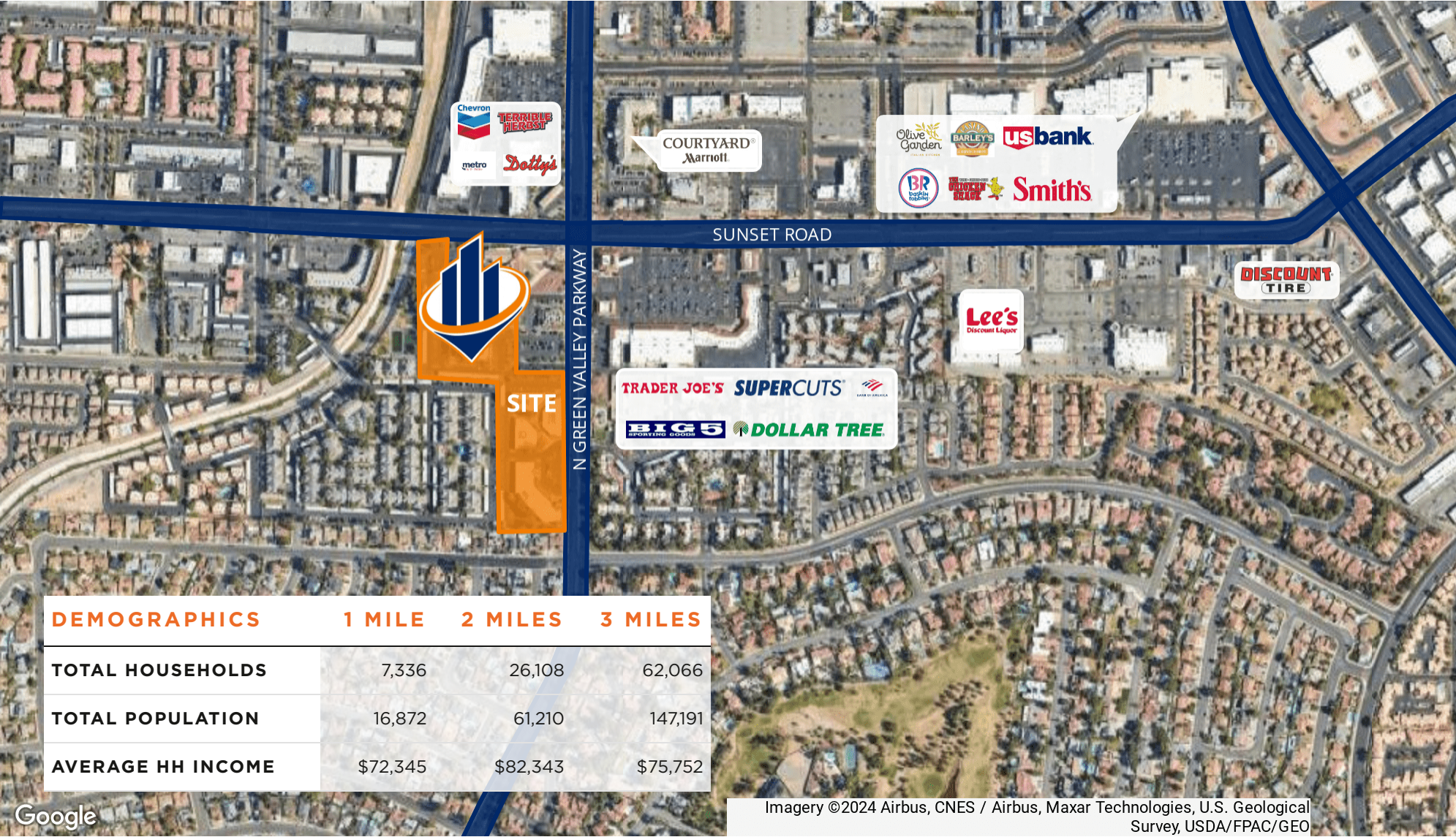
O: 702.527.7923 | C: 702.885.7383

[pete.janemark@svn.com](mailto:pete.janemark@svn.com)

NV #S.76731



RETAILER MAP



PETE JANEMARK, CCIM  
O: 702.527.7923 | C: 702.885.7383  
pete.janemark@svn.com  
NV #S.76731