



Cherokee Farms Rd & Still Shadow Dr

Beaufort, South Carolina 29906

Property Highlights

- Approximately 19.51 Acres for sale in Beaufort near Habersham Village
- Located close to the Marine Corps Air Station and various established neighborhoods along Cherokee Farm Road as well as Highway 170 and Robert Smalls Parkway
- Site is mostly clear and level
- Utilities including water have been extended to the area, except for sewer
- Suitable for wide range of uses including residential and limited commercial development

Offering Summary

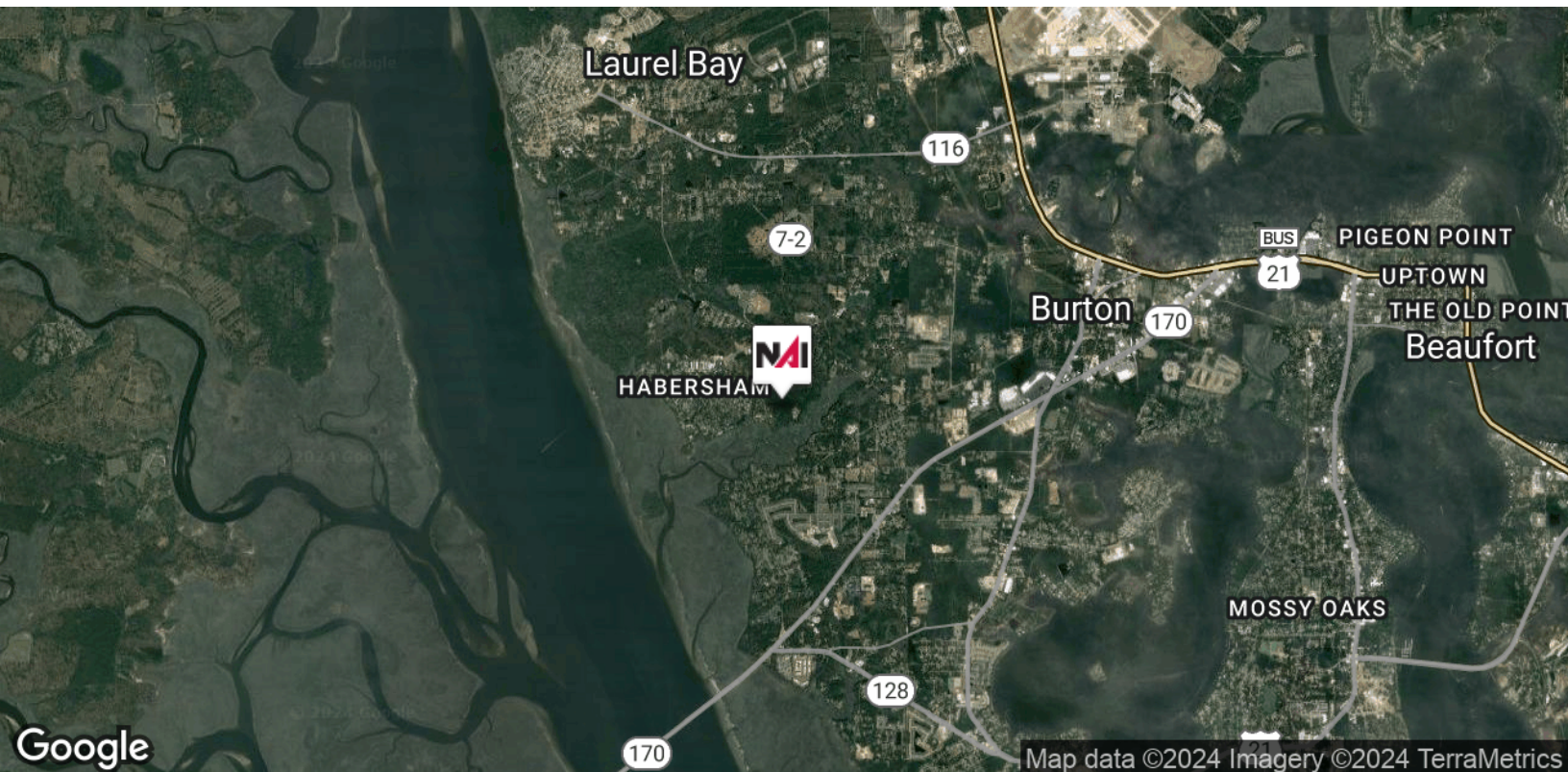
Sale Price:	\$390,000
Lot Size:	19.51 Acres
Price per Acre:	\$19,990 / Acre
Zoning:	T2R - Rural

For More Information

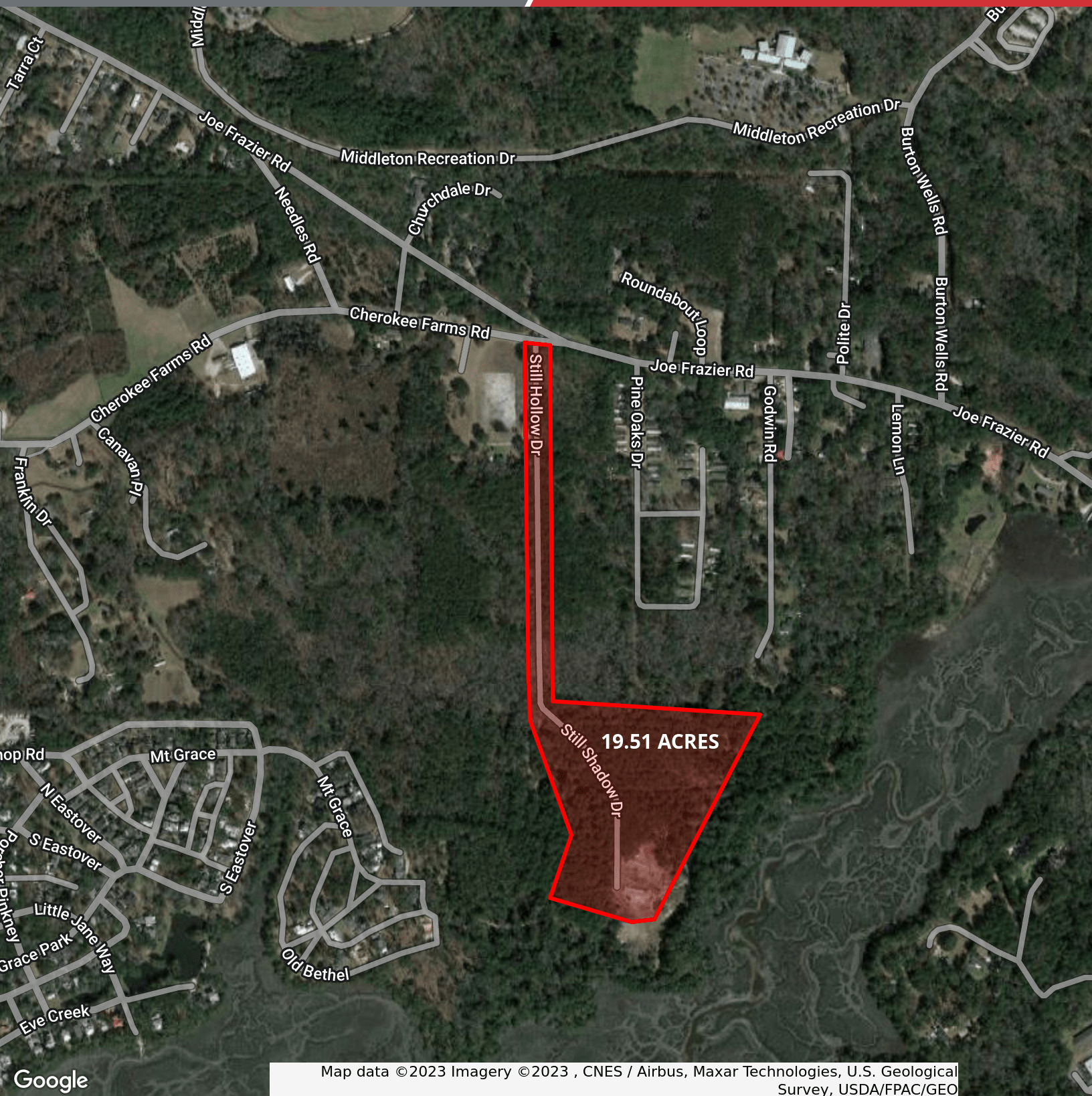
Baker Wilkins

O: 843 837 4460 x2

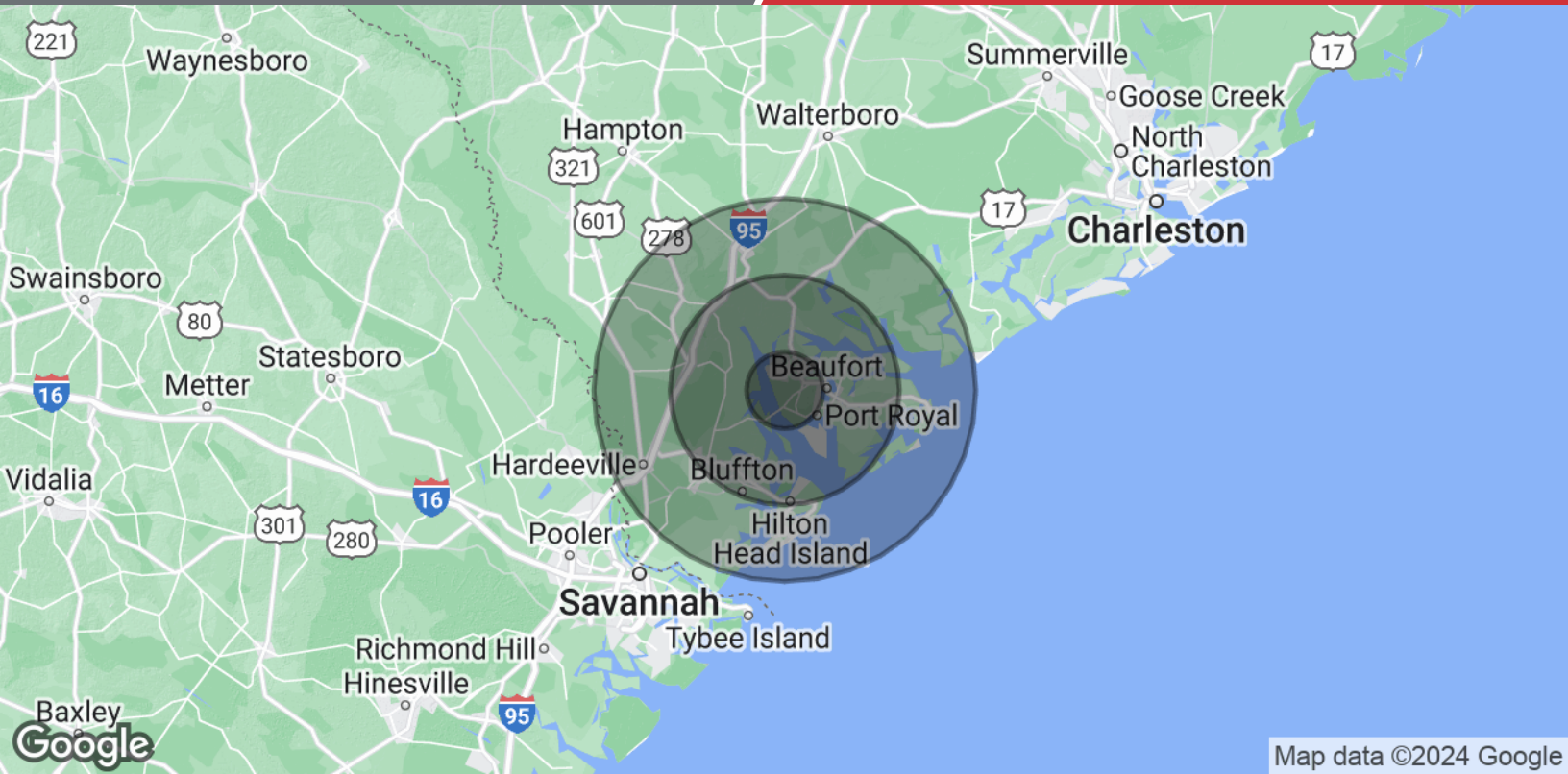
baker@naicarolinacharter.com







Map data ©2023 Imagery ©2023 , CNES / Airbus, Maxar Technologies, U.S. Geological Survey, USDA/FPAC/GEO



Population	5 Miles	15 Miles	25 Miles
Total Population	39,325	148,794	222,679
Average Age	34.7	43.0	45.7
Average Age (Male)	32.0	41.2	44.4
Average Age (Female)	37.8	44.6	46.9
Households & Income	5 Miles	15 Miles	25 Miles
Total Households	15,442	65,647	115,428
# of Persons per HH	2.5	2.3	1.9
Average HH Income	\$66,307	\$74,241	\$71,159
Average House Value	\$197,766	\$304,518	\$339,812

* Demographic data derived from 2020 ACS - US Census