



1205-1219 North University Street
Redlands, CA 92374

The Residence At Casa Loma

NAI Capital
COMMERCIAL REAL ESTATE SERVICES, WORLDWIDE

LISTING BROKERS:



Steve Liu
Executive Vice President
949.468.2385
sliu@naicapital.com



Ryan Campbell, SIOR
Executive Managing
Director
909.348.0606
rcampbell@naicapital.com



Richard J Lee
Senior Associate
949.468.2336
richardjlee@naicapital.com



No warranty, express or implied, is made as to the accuracy of the information contained herein. This information is submitted subject to errors, omissions, change of price, rental or other conditions, withdrawal without notice, and is subject to any special listing conditions imposed by our principals. Cooperating brokers, buyers, tenants and other parties who receive this document should not rely on it, but should use it as a starting point of analysis, and should independently confirm the accuracy of the information contained herein through a due diligence review of the books, records, files and documents that constitute reliable sources of the information described herein. Logos are for identification purposes only and may be trademarks of their respective companies. NAI Capital Commercial, Inc. CAL DRE Lic. #02130474

TABLE OF CONTENTS

1	COVER PAGE
2	TABLE OF CONTENTS
3	PROPERTY OVERVIEW & HIGHLIGHTS
4	PROPERTY DETAILS
5	SITE PLAN
6	BIRD'S EYE
7	AERIAL - NEIGHBORS
8	RETAILER MAP
9	METROLINK
10	UNIVERSITY OF REDLANDS
11	CITY OF REDLANDS
12	DEMOGRAPHICS MAP & REPORT

PROPERTY OVERVIEW & HIGHLIGHTS



NAI Capital, as exclusive advisors to ownership, is proud to present for sale The Residence at Casa Loma development project. The Moresque-Spanish design was inspired by the former Casa Loma Hotel with towers, tile roofs, covered balconies, arches, shutters and corbels. The opportunity consists of 5.7 acres of land with approved 147 multifamily residential units within 3-story buildings. The unit mix includes studio, one-bedroom and two-bedroom plans that range from 603 SF to 1,086 SF.

The project is located south of Lugonia Avenue between Occidental Drive and University Street. This prime location is adjacent and walking distance to the University of Redlands and just minutes from the ESRI corporate headquarters. The site offers easy access to the 10 and 210 Freeways for commuters. The newly built Redlands-University Metrolink station is also minutes away and connects residences to San Bernardino and all the way to Los Angeles.

- 147-Unit Moresque-Spanish Style Multifamily
- Plans Approved and Permits Ready to Issue (RTI)
- 5.7 Acres Adjacent to University of Redlands
- Minutes From ESRI Corporate Headquarters
- Metrolink Arrow Station Built in 2022 is Minutes Away
- Excellent Mix of Studios, 1 Bedrooms & 2 Bedrooms
- Amenities Including: Resort-Style Pool & Spa, Covered Cabanas, Yoga & Fitness Center, Clubhouse, Mail Lounge, Garden & Dog Park

PROPERTY DETAILS

Sale Price	\$14,700,000
------------	--------------

LOCATION INFORMATION

Building Name	The Residence at Casa Loma
Street Address	1205-1219 North University Street
City, State, Zip	Redlands, CA 92374
County	San Bernardino County
Market	Inland Empire
Sub-market	North Redlands
Cross-Streets	Lugonia Avenue

UNIT MIX

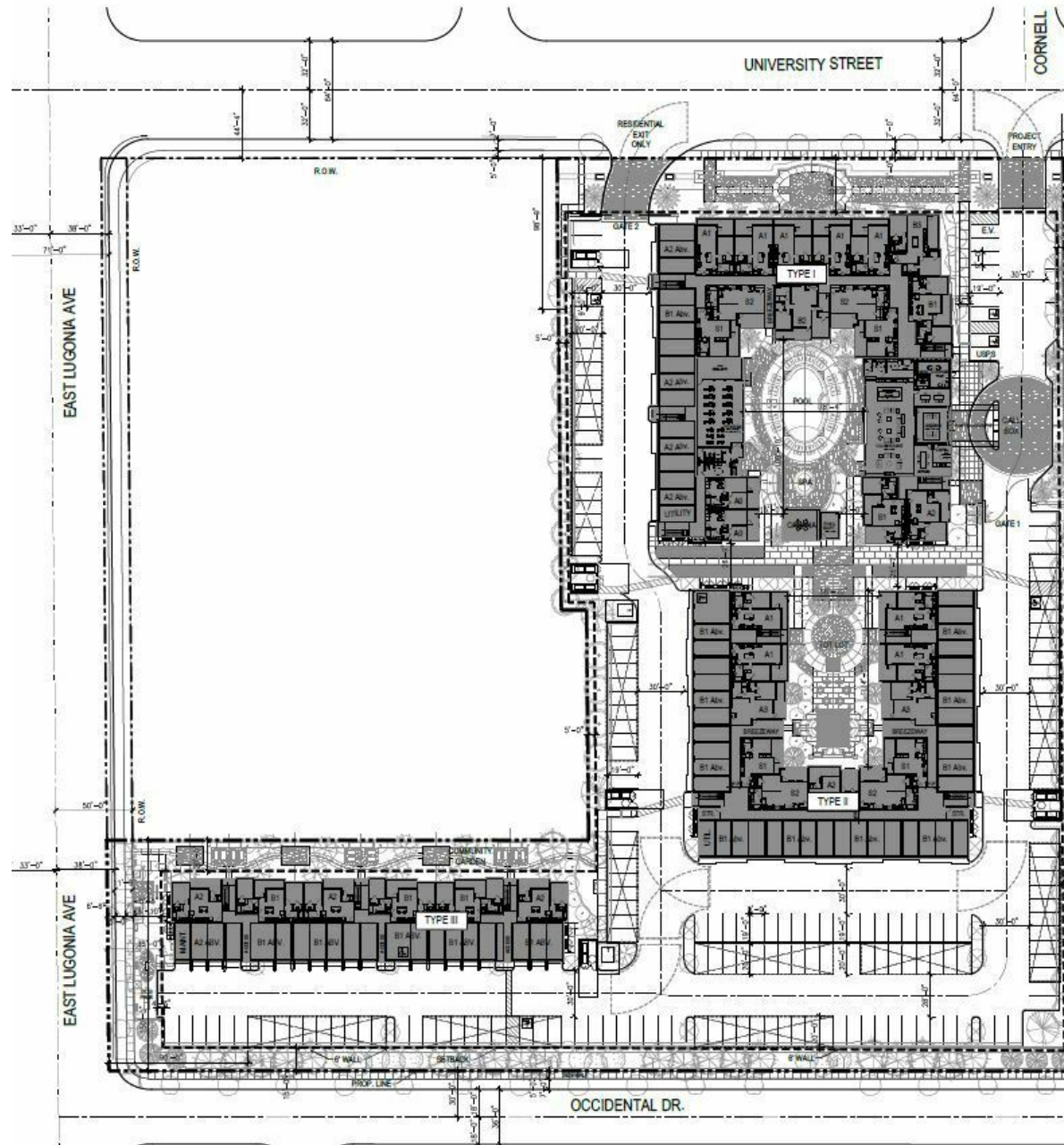
Studio	22
1 Bedroom, 1 Bath	65
2 Bedroom, 2 Bath	60

PROPERTY INFORMATION

Property Type	Multifamily
Property Subtype	Low-Rise/Garden
Zoning	Multi-Family Residential (R-3)
Lot Size	5.7 Acres
APN #	1212-371-01, 05 to 20



SITE PLAN





AERIAL - NEIGHBORS



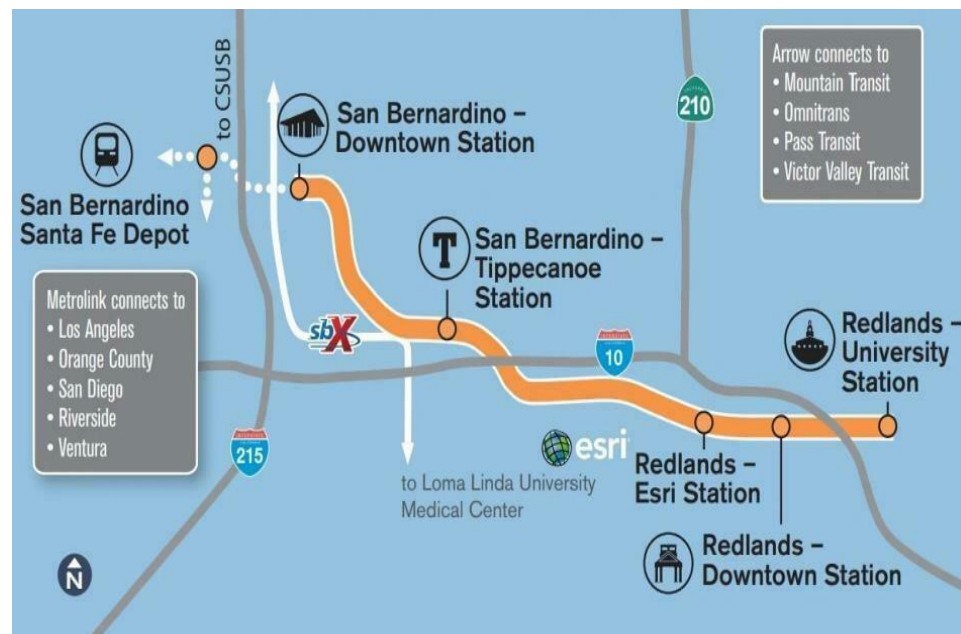
RETAILER MAP





ARROW

Arrow is a 9-mile commuter rail service that opened October of 2022. The line runs from the San Bernardino Transit Center in Downtown San Bernardino in the west to the University of Redlands in the east. Arrow connects the communities within University of Redlands, the ESRI corporate campus and San Bernardino. Arrow also connects Redlands' residences and commuters to Los Angeles County to the west through the San Bernardino Line and connects to Orange County to the south through the Inland Empire-Orange County Line.



FOUR STOPS EAST OF SAN BERNARDINO SANTA FE DEPOT

- San Bernardino – Tippecanoe Station located between Victoria Avenue and Hardt Street
- Redlands – Esri Station across from the headquarters campus of GIS software maker ESRI
- Redlands – Downtown Station just north of the historic Redlands Santa Fe Depot
- Redlands – University Station at the south end of the University of Redlands campus



ACCREDITATIONS AND ACCOLADES

- Ranked #5 Regional University in the West by U.S. News & World Report
- Ranked Top 4% of colleges contributing to the public good by Washington Monthly
- The U.S. Department of Education has designated the University of Redlands as a Hispanic Serving Institution (HSI)
- The University of Redlands has been recognized as a top producer of Fulbright Scholars

ABOUT UNIVERSITY OF REDLANDS

Established in 1907, the University of Redlands stands as a prominent institution of higher learning located in the southern California city that shares its name. The campus enjoys a unique setting, being in close proximity to both the vibrant urban attractions of San Bernardino and the breathtaking natural beauty of a nearby mountain range.

The University of Redlands offers a diverse array of undergraduate fields of study through its College of Arts and Sciences, with over 40 majors available, including environmental studies, chemistry, and global business. Additionally, students can pursue minors in intriguing disciplines like astronomy, human-animal studies, and art history. For those interested in geospatial technologies, the Centre for Spatial Studies offers comprehensive and multidisciplinary programs.

Academic offerings extend beyond the College of Arts and Sciences to encompass the schools of business, education, and music. Moreover, the school of continuing studies provides various certificate programs, individual courses, workshops, and on-site custom courses.

Undergraduate students are required to reside on campus during their academic journey, and the university offers a wide range of accommodation options. Anderson Hall accommodates 200 students across all educational years, while Grossmont Hall serves as an all-women's community, and Melrose Hall houses 60 students with extended quiet study hours.

The university's beloved mascot is the bulldog, which can be frequently spotted at sporting events and around campus. A tradition that began as a prank in 1913, the carving of a large letter "R" into the surrounding vegetation continues to be upheld to this day.

Notable alumni of the University of Redlands include congresspersons Pete Aguilar and Juanita Millender-McDonald, prominent lawyer David Boies, and esteemed true crime writer Cathy Scott.



LOCATION DESCRIPTION

The City of Redlands was officially incorporated in 1888 and is situated in the San Bernardino Valley. It is positioned 63 miles east of Los Angeles, 110 miles north of San Diego, and 500 miles southeast of San Francisco. Nestled within the southwestern portion of San Bernardino County, the city covers an area of 36 square miles, at the heart of the Inland Empire, and is home to approximately 70,000 residents.

Redlands' economy thrives mainly in the service and trade sectors, with a focus on industries such as healthcare, retail trade, government, education, and light manufacturing. The region boasts a diverse manufacturing and industrial base, which has contributed to the relative stability of its unemployment rate over the years.

The city still has significant available land for industrial, commercial, and office use, with only a portion of these areas currently in use. Several major industries, including computer hardware and software manufacturers, electrical controls and automobile component manufacturers, as well as various financial and insurance institutions, have their headquarters or divisions situated within the city or in close proximity.

Among the notable employers in the City of Redlands or its vicinity are the Redlands Unified School District, the United States Postal Service, ESRI (Environmental Systems Research Institute), Redlands Community Hospital, Verizon/GTE, the University of Redlands, the City of Redlands, Loma Linda University Medical Center, the Jerry L. Pettis Veterans Hospital, and the VA Loma Linda Healthcare System.



TOP EMPLOYERS (2022)	# OF EMPLOYEES	%
ESRI	2,713	7.73%
Redlands Unified School District	2,355	6.71%
Redlands Community Hospital	1,319	3.76
Beaver Medical Group	1,027	2.93%
Amazon Fulfillment Center	800	2.28%
University of Redlands	524	1.49%
City of Redlands	460	1.31%
Terracina Post Acute	280	0.80%
Loma Linda University Med. Ctr.	256	0.73%
The Home Depot	247	0.70%

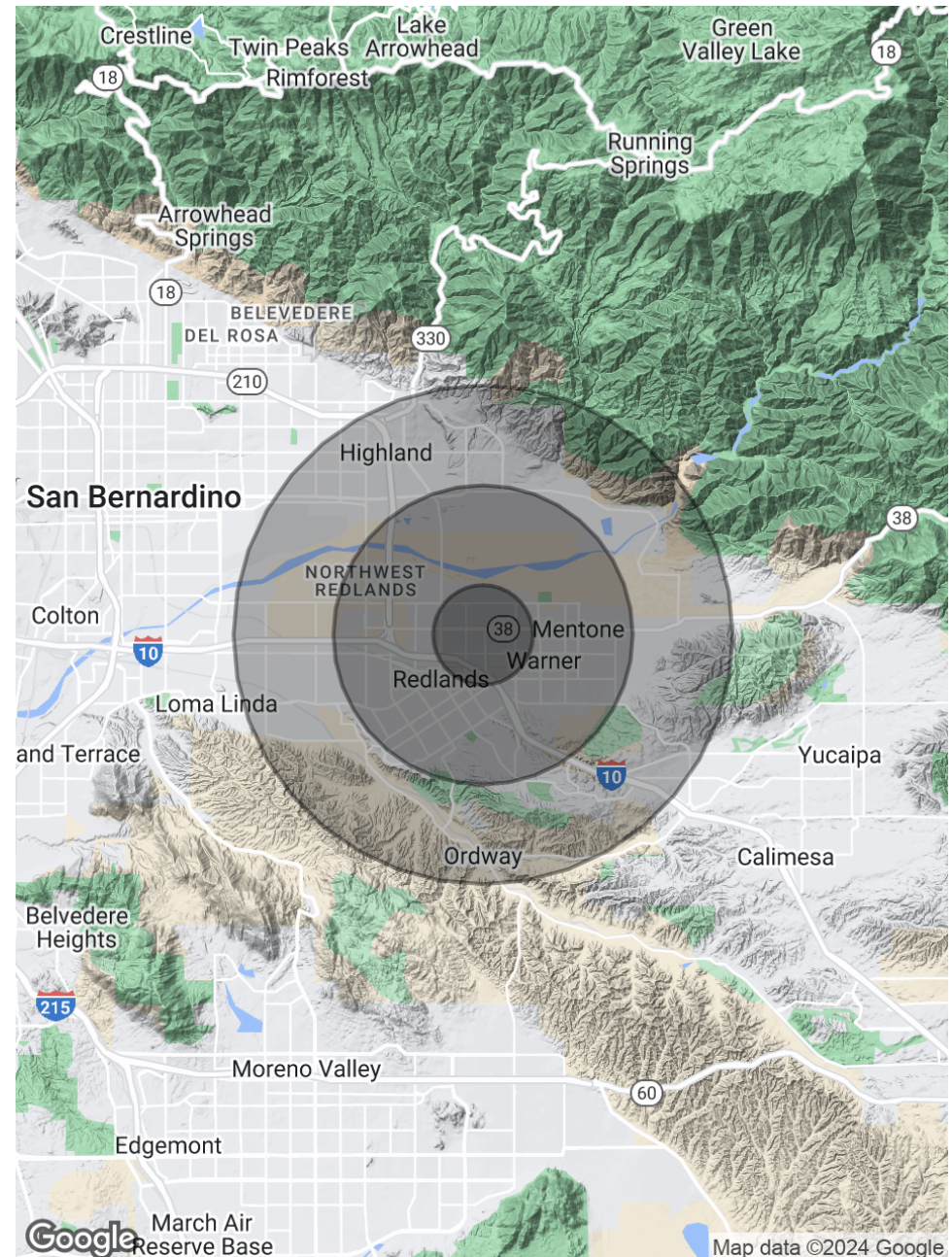
DEMOGRAPHICS MAP & REPORT

POPULATION	1 MILE	3 MILES	5 MILES
Total Population	19,296	75,668	142,885
Average Age	30.4	35.8	36.9
Average Age (Male)	30.8	34.9	35.8
Average Age (Female)	31.8	37.1	38.1

HOUSEHOLDS & INCOME	1 MILE	3 MILES	5 MILES
Total Households	5,902	27,430	50,088
# of Persons per HH	3.3	2.8	2.9
Average HH Income	\$79,318	\$93,299	\$97,274
Average House Value	\$254,860	\$341,264	\$349,809

RACE	1 MILE	3 MILES	5 MILES
% White	65.1%	66.4%	63.6%
% Black	9.7%	6.0%	6.2%
% Asian	5.4%	7.2%	10.5%
% Hawaiian	0.1%	0.1%	0.3%
% American Indian	0.5%	0.4%	0.6%
% Other	9.6%	9.1%	9.9%

* Demographic data derived from 2020 ACS - US Census





COMMERCIAL REAL ESTATE SERVICES, WORLDWIDE

1205-1219

Redlands, CA 92374
North University Street

Exclusive Advisors:

Steve Liu

Executive Vice President

949.468.2385

sliu@naicapital.com

Ryan Campbell, SIOR

Executive Managing Director

909.348.0606

rcampbell@naicapital.com

Richard J Lee

Senior Associate

949.468.2336

richardjlee@naicapital.com

No warranty, express or implied, is made as to the accuracy of the information contained herein. This information is submitted subject to errors, omissions, change of price, rental or other conditions, withdrawal without notice, and is subject to any special listing conditions imposed by our principals. Cooperating brokers, buyers, tenants and other parties who receive this document should not rely on it, but should use it as a starting point of analysis, and should independently confirm the accuracy of the information contained herein through a due diligence review of the books, records, files and documents that constitute reliable sources of the information described herein. Logos are for identification purposes only and may be trademarks of their respective companies. NAI Capital Commercial, Inc. CAL DRE Lic. #02130474

