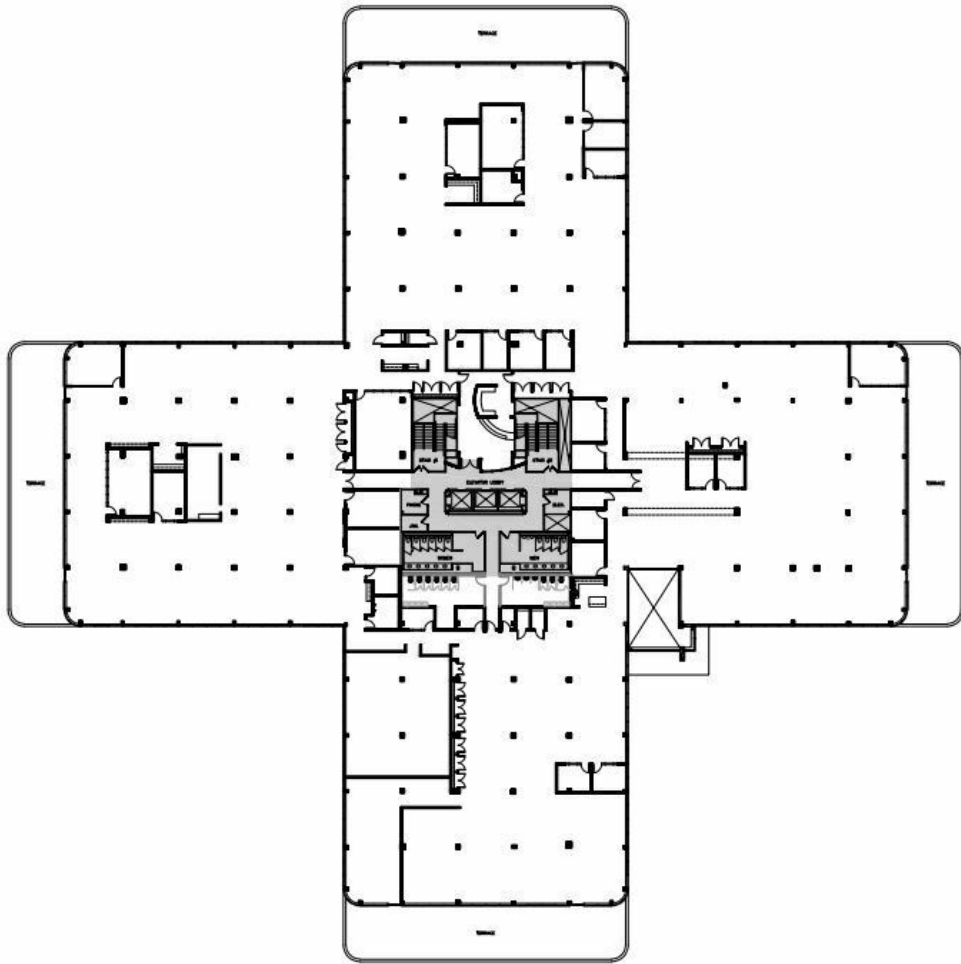


SUITE 200 | 10,000 SF - 54,711 SF

1751 W DIEHL RD \ NAPERVILLE, IL



Fully Furnished Full Floor (Divisible to +/- 10,000 SF)



SPACE NOTES

- Fully Furnished Move-in Ready Full Floor Office Space
- LED Lights In Place
- Balcony Access
- 380 Workstations In Place
- 14 Furnished Offices
- 15 Furnished Conference Rooms



Building Features Covered Parking, Conference Center, Fitness Center and Deli/Lounge

RYAN MOEN
630.480.6346
rmoen@versares.com

JOHN MILLNER
630.480.6342
JMillner@VersaRES.com

1 MID AMERICA PLAZA, 3RD FLOOR
OAKBROOK TERRACE, IL 60181
630.480.6413

VERSA
REAL ESTATE SERVICES