



Northrock Place

Office Building | 49,297 SF

Property Highlights

- Class A, 2-story office building located in the northeast quadrant of Wichita
- Abundant parking
- Building & monument signage available
- Year built: 1995
- Strategically located along the Rock Road corridor near numerous national retailers
- Recent improvements include: New roof, access control system, HVAC controls, LED parking lot lighting, parking lot replacement, HVAC replacement, new landscaping, common area and restrooms renovated.

Offering Summary

Lease Rate:	\$21 - \$22 PSF (Full Service)
Lot Size:	3.51 Acres
Suite 100:	2,701 SF
Suite 180:	2,920 SF
2nd Floor:	3,846 - 18,530 SF

For More Information

Patrick Ahern, SIOR, CCIM

O: 316 847 4914
pahern@naimartens.com

Marisa Weber

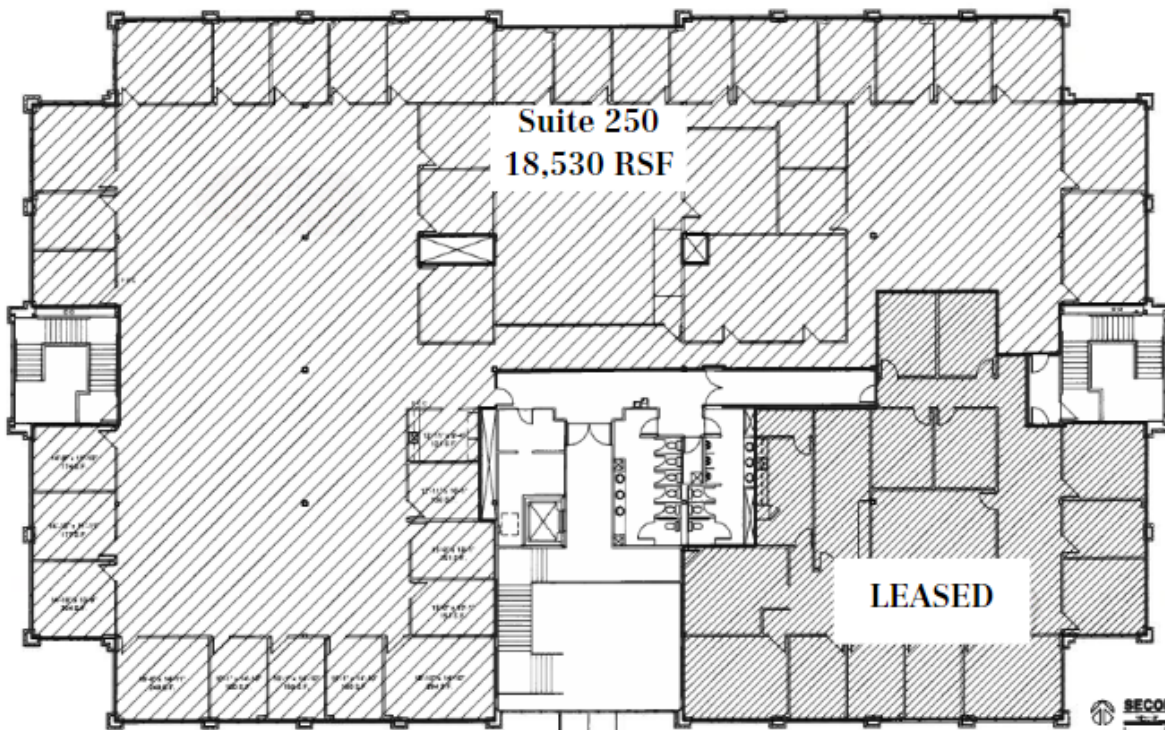
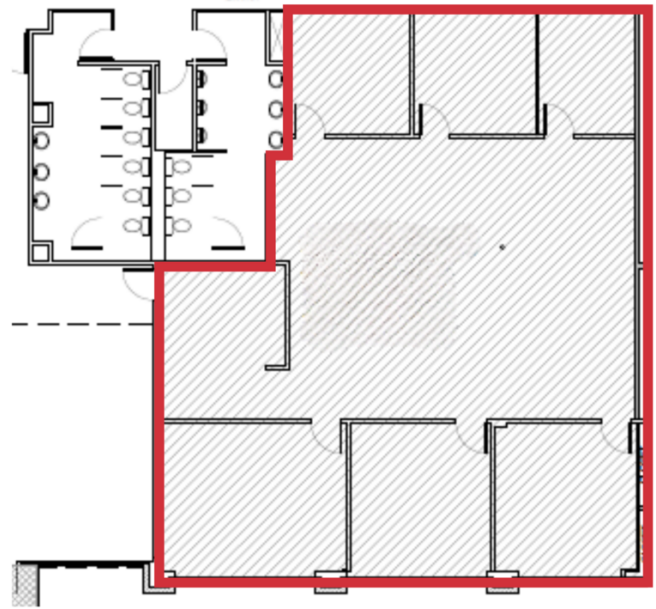
O: 316 262 0000
Mweber@naimartens.com



Suite 180
2,920 SF



Suite 100
2,701 SF



SECOND FLOOR PLAN

