

FOR LEASE

PREMIER OFFICE SPACE @ Weston Professional Center

2125 NORTH COMMERCE PARKWAY

Weston, FL 33326

PRESENTED BY:

LES BYRON, SIOR, CCIM

C: 954.401.4713

les@svncr.com

KEITH KIDWELL, SIOR, CCIM

C: 954.234.8777

keith@svncr.com

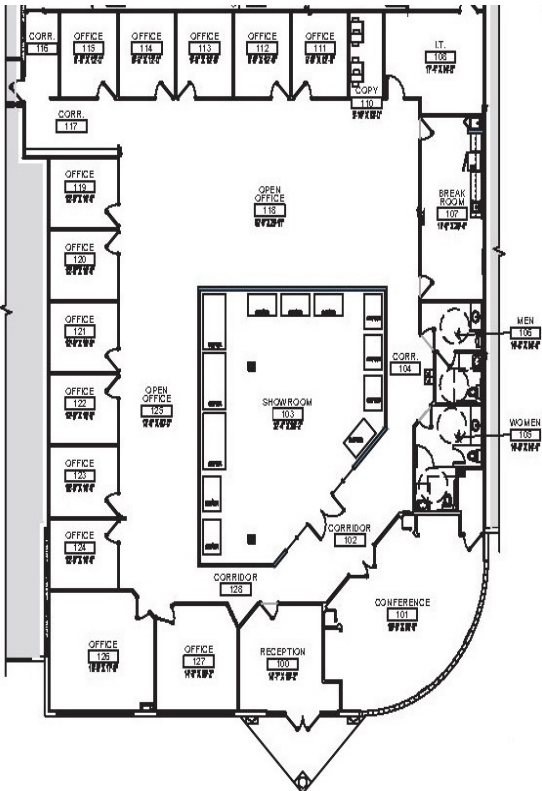
STEVE DAVIS

C: 954.650.7824

steve@svncr.com



PROPERTY SUMMARY



OFFERING SUMMARY

AVAILABLE SF:	7,500 SF
MARKET:	Weston
SUBMARKET:	Southwest Broward
PARKING:	4:1,000
LEASE RATE:	\$15.95 SF/yr (NNN)
CAM:	\$10.64/PSF

LES BYRON, SIOR, CCIM
C: 954.401.4713
les@svncr.com

KEITH KIDWELL, SIOR, CCIM
C: 954.234.8777
keith@svncr.com

STEVE DAVIS
C: 954.650.7824
steve@svncr.com

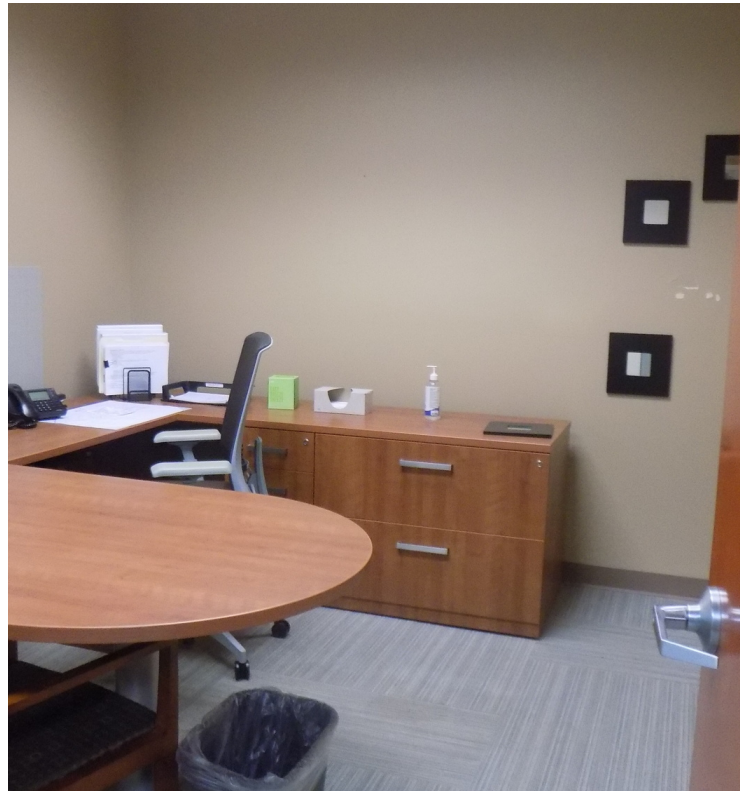
PROPERTY OVERVIEW

Weston Professional Center (WPC) is one of the finest Class A single story office buildings with the lowest CAM in Weston. Located off Royal Palm Parkway, and across the street from the Marriott Courtyard, WPC stands out as an excellent choice for those seeking a pleasant environment to enhance their business operations.

PROPERTY HIGHLIGHTS

- Building signage.
- Attractive lobby entrance.
- Extensive interior glass.
- Perimeter offices with open space.
- Large training/conference room.
- IT room with separate AC thermostat
- Full kitchen and two (2) restrooms
- Electric in slab. Utilities to building are underground.
- Medical use approved.
- Available July 1, 2024.

ADDITIONAL PHOTOS



LES BYRON, SIOR, CCIM

C: 954.401.4713

les@svncr.com

KEITH KIDWELL, SIOR, CCIM

C: 954.234.8777

keith@svncr.com

STEVE DAVIS

C: 954.650.7824

steve@svncr.com