



PROPERTY OVERVIEW

Bull Realty is pleased to present this ±11,312 SF medical building located in Stone Mountain, GA with ±2,619 SF of space available for lease. The suite was formerly occupied by a primary care physician that served the community for over 30 years. This is an excellent and highly visible location for any medical practice. The suite contains 5 exam rooms with sinks and plenty of physician and staff offices. Dedicated surface parking, monument and building signage available. Dialysis Care Center is the other tenant in the building.

PROPERTY HIGHLIGHTS

- ±2,619 SF medical office space available for sublease
- Excellent visibility from Memorial Drive and easy and direct access from I-285
- Dedicated monument and building signage available
- Abundant and dedicated surface parking
- Suite includes 5 exam rooms with sinks and x-ray available



CLICK TO VIEW WALK-THROUGH



DEMOGRAPHICS



HOUSEHOLDS (3 MILE)

41,580



AVERAGE HOUSEHOLD INCOME (3 MILE)

\$74,405



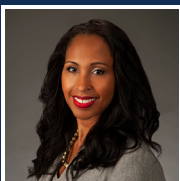
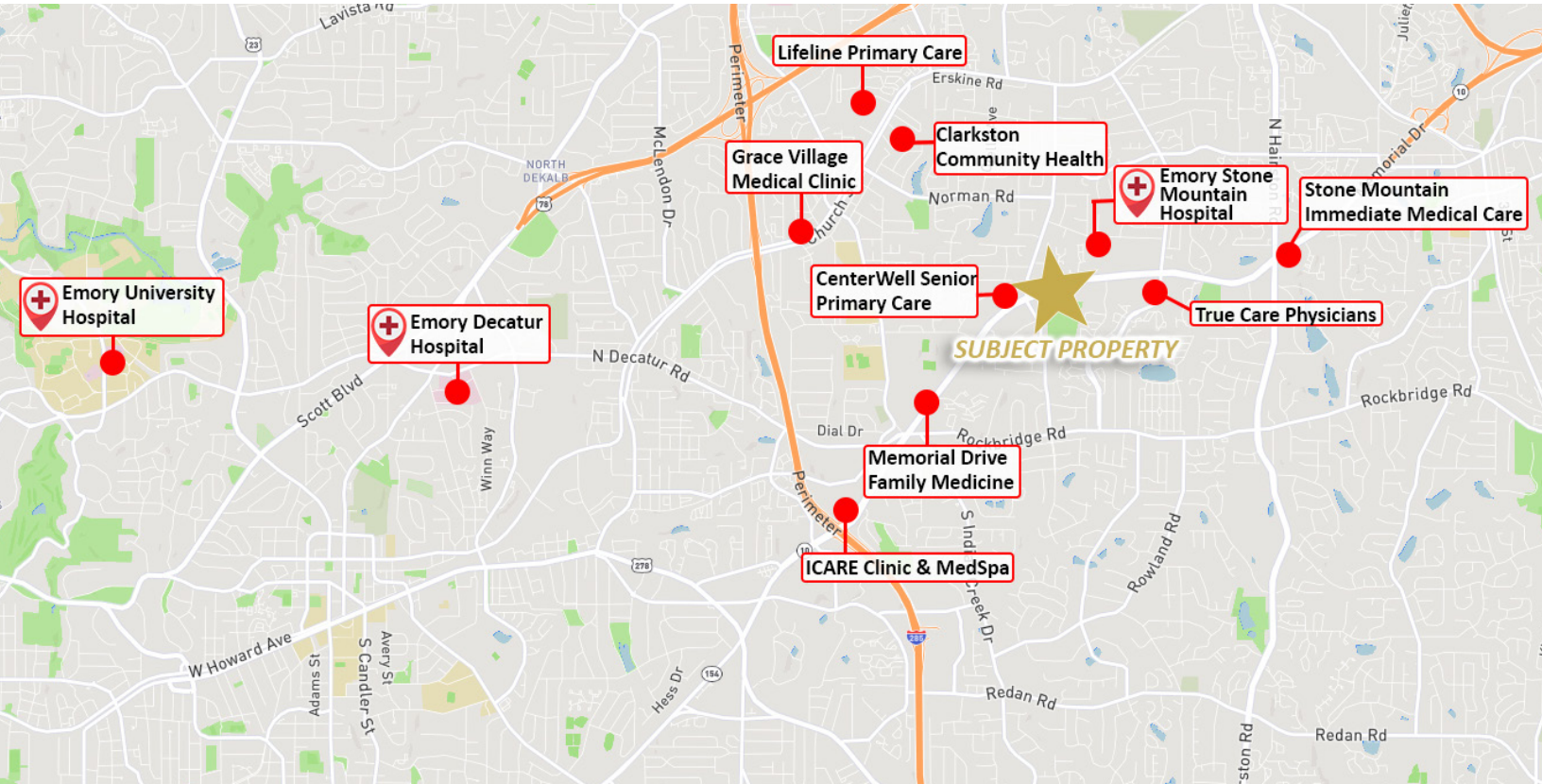
POPULATION (3 MILE)

114,018

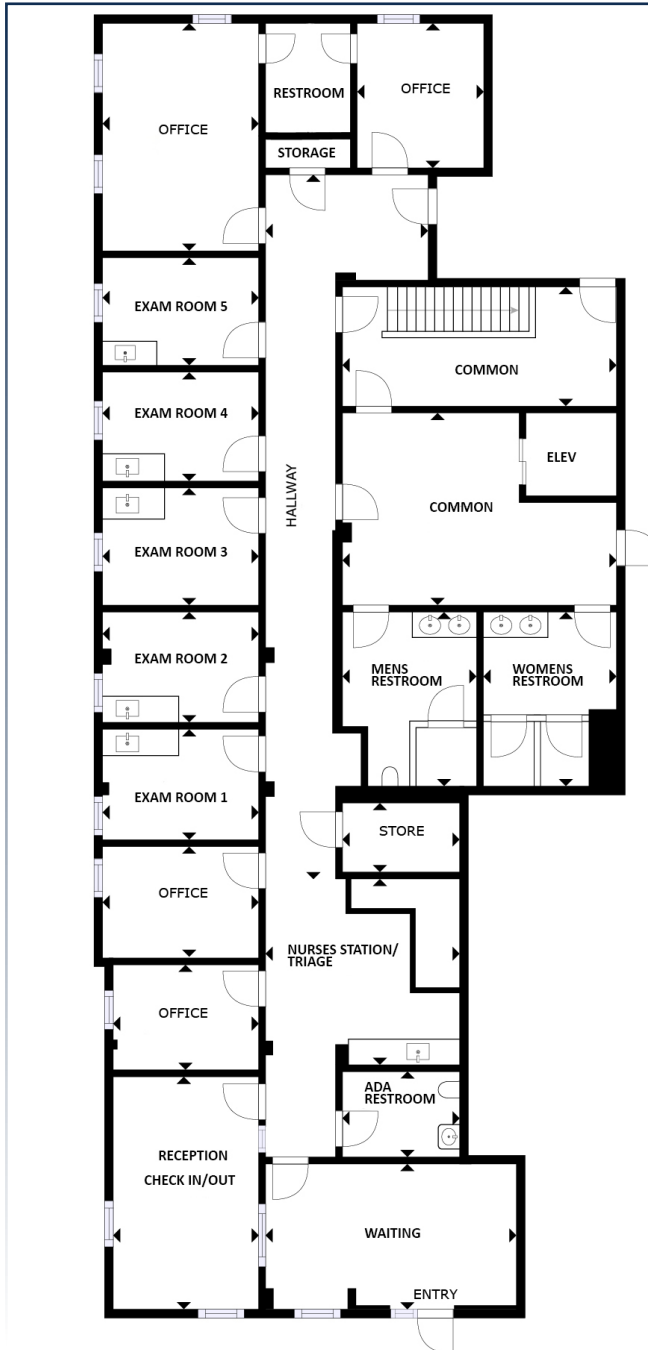


AMPLE PARKING

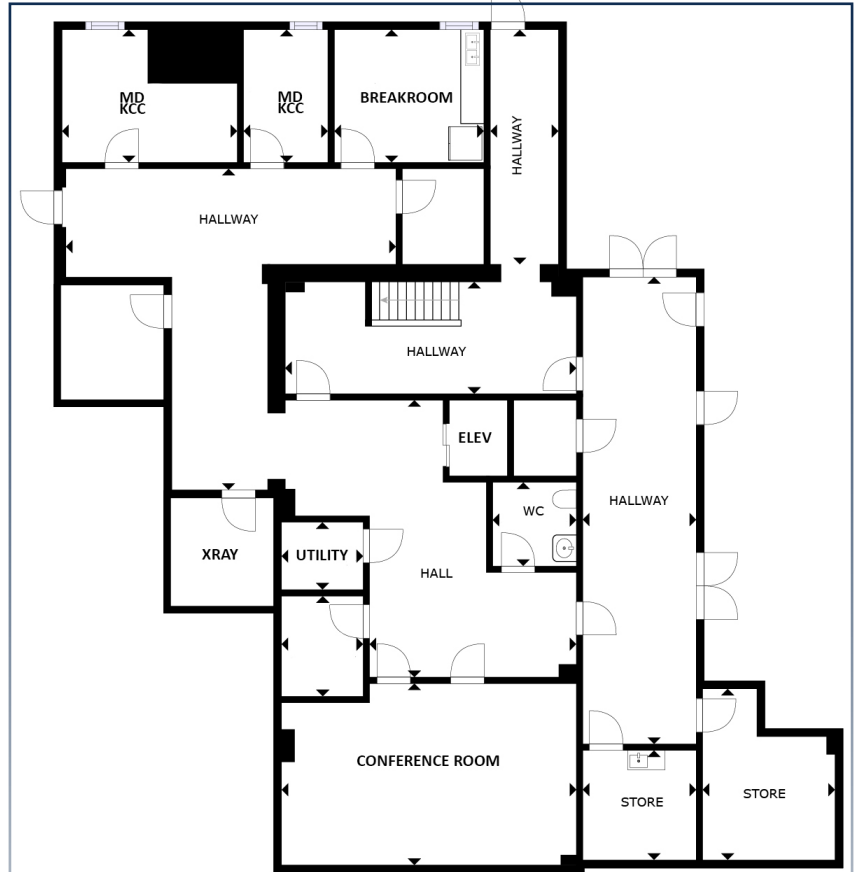
IN THE AREA



FLOOR PLANS



1ST FLOOR



LOWER LEVEL

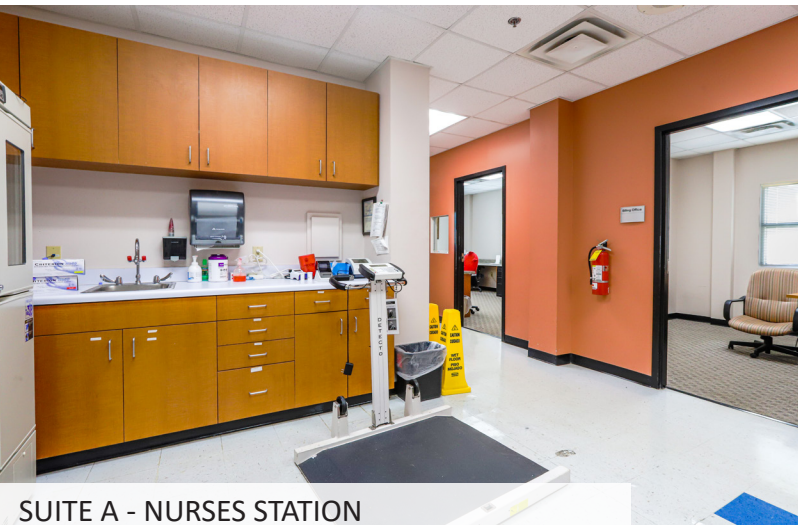




SUITE A - NURSES STATION/TRIAGE



SUITE A - MD OFFICE



SUITE A - NURSES STATION



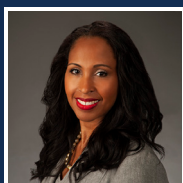
SUITE A - RECEPTION CHECK OUT OFFICE



SUITE A - EXAM ROOM



SUITE A - RECEPTION





SUITE A - HALLWAY



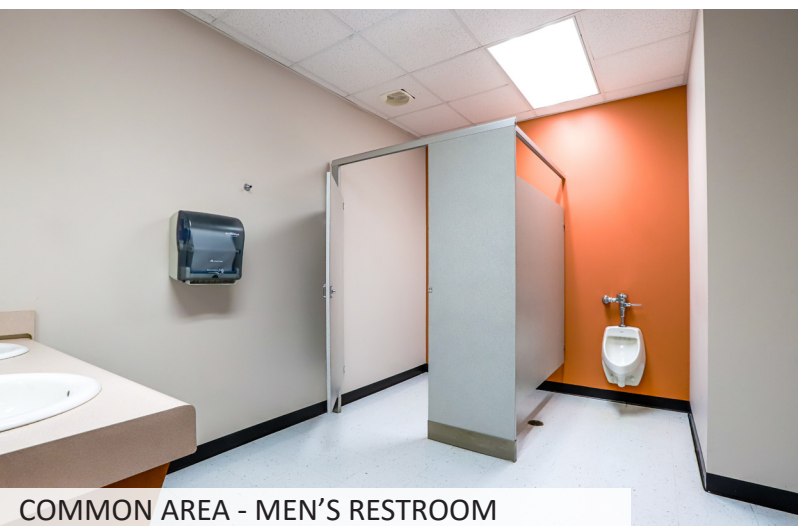
SUITE A - WAITING



COMMON AREA - ELEVATOR LOBBY



COMMON AREA - CONFERENCE ROOM



COMMON AREA - MEN'S RESTROOM

