

Warehouse in Prime Location

2242 NE COLUMBIA BLVD | PORTLAND, OR 97211



FOR LEASE

Megan McElmurry
503.972.7274
megan@macadamforbes.com
Licensed in OR

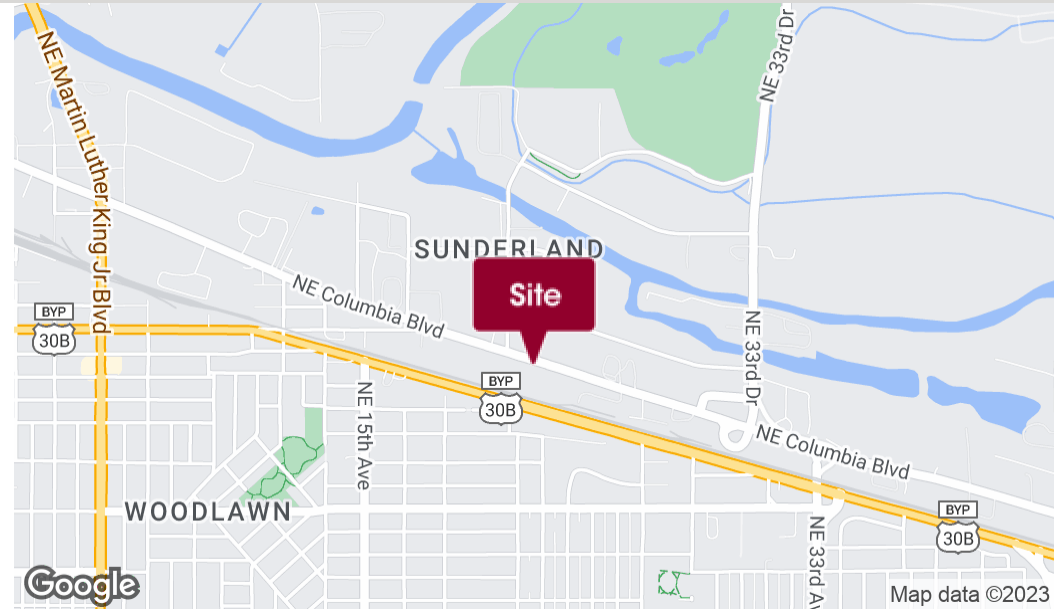
2 Centerpointe Drive, Suite 500 | Lake Oswego, OR 97035 | WWW.MACADAMFORBES.COM | 503.227.2500

All of the information contained herein was obtained either from the owner or other parties we consider reliable. We have no reason to doubt its accuracy, however we do not guarantee it.



FOR LEASE

2242 NE Columbia Boulevard, Portland, OR 97211



LOCATION DESCRIPTION

Exceptional accessibility and proximity to I-5 North or South. In the highly competitive search for warehouse facilities, this sought-after industrial space stands out due to its size and convenient access.

OFFERING SUMMARY

Lease Rate:	Negotiable
Building Size:	33,000 SF
Available SF:	3,000 SF
Office SF:	450 SF
Loading:	One dock high or grade level door (accessible via ramp)



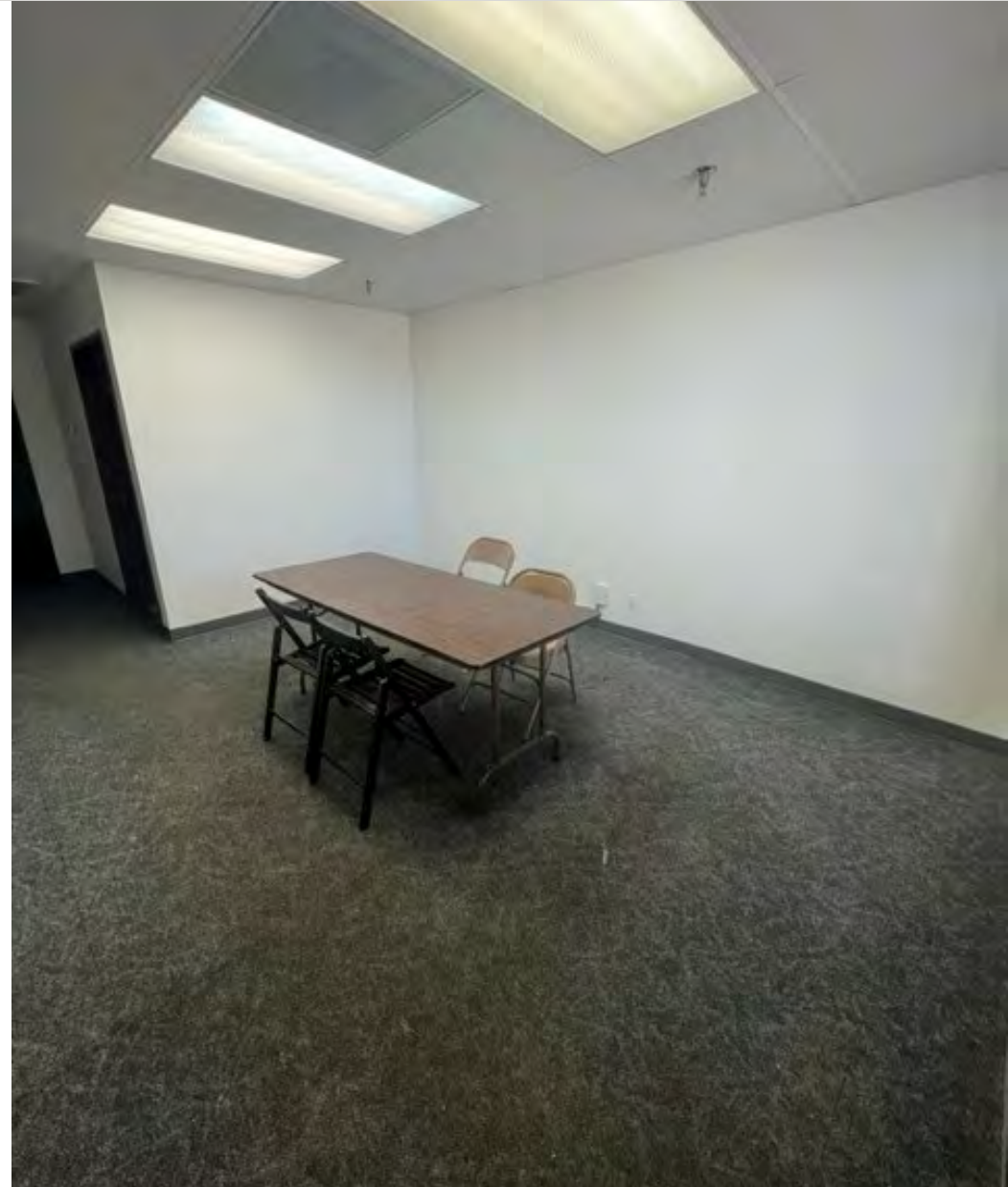
Megan McElmurry
503.972.7274
megan@macadamforbes.com
Licensed in OR

All of the information contained herein was obtained either from the owner or other parties we consider reliable. We have no reason to doubt its accuracy, however we do not guarantee it.

MACADAMFORBES.COM | 503.227.2500

FOR LEASE

2242 NE Columbia Boulevard, Portland, OR 97211



Megan McElmurry
503.972.7274
megan@macadamforbes.com
Licensed in OR

All of the information contained herein was obtained either from the owner or other parties we consider reliable. We have no reason to doubt its accuracy, however we do not guarantee it.

MACADAMFORBES.COM | 503.227.2500