



1786 Wilmington Pike

Glen Mills, Pennsylvania 19342

Property Features

- Recently completed building upgrades include new roof, new paint and carpet in common areas and hallways, LED lighting, windows and HVAC.
- Elevator Served
- Conveniently located on Rt 202 in Glen Mills, PA
- Numerous nearby amenities including retail, hotels, and restaurants
- Easily accessible from Philadelphia, Delaware and New Jersey
- Parking: Ample
- Lease Rate: Negotiable

For Lease: Medical/General Office Suites:

FIRST FLOOR

Suite 101A: +/- 1,311 RSF

THIRD FLOOR

Suite 301A: +/- 1,286 sf

Suite 301B: +/- 1,411 sf

SECOND FLOOR

Suite 202B +/- 1,934 RSF

Suite 300A: +/- 1,275 sf

Suite 300B: +/- 1,514 sf



For more information:

Neil Kilian SIOR, CCIM

302 322 9500 • C: 302 521 7291

neilkilian@emoryhill.com

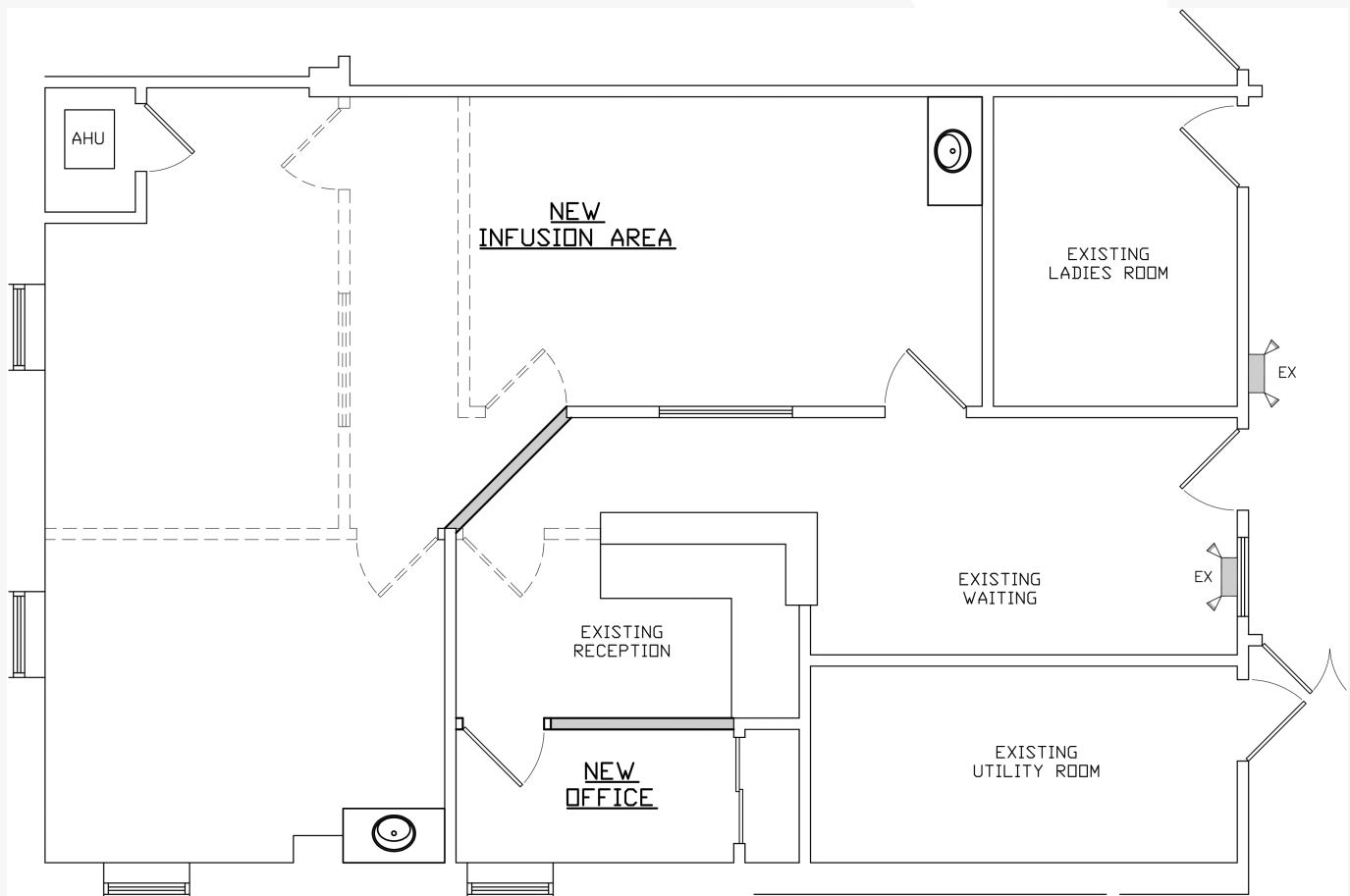
Brian Ashby, Associate

302 322 9500 • C: 302 763 2349

brianashby@emoryhill.com

For Lease
Medical/Office

Suite 101A (+/- 1,311 RSF)



For Lease
Medical/Office

The floor plan shows the following rooms and features:

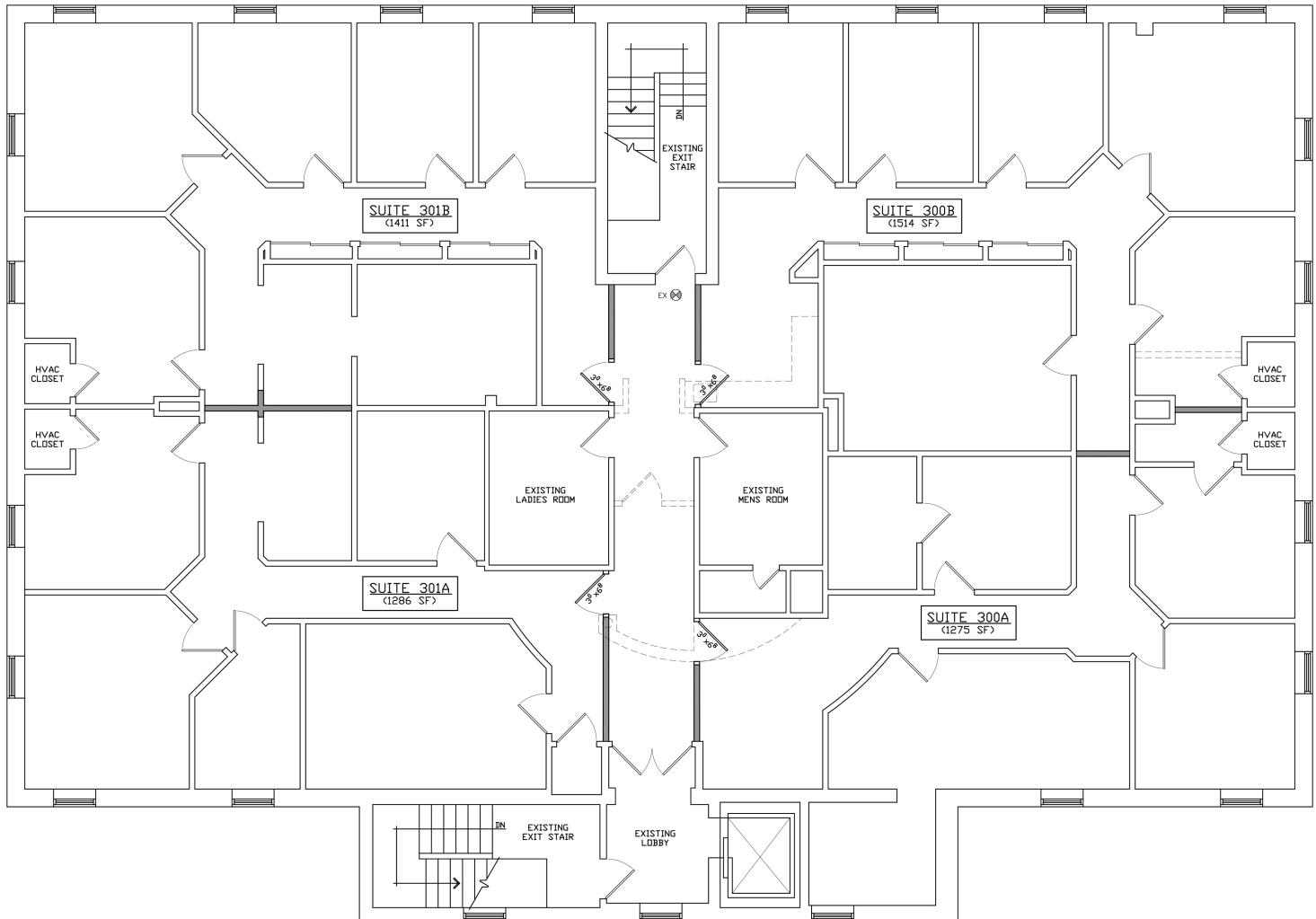
- OFFICE (2005)**: Located in the top left corner.
- HVAC UNIT**: Two units located on the left side of the plan.
- RECEPTIONIST (2005)**: Located below the HVAC units.
- PILL ROOM (2005)**: Located below the receptionist area.
- WAITING AREA (2005)**: A large central area with several chairs.
- KITCHENETTE (2005)**: Located to the right of the waiting area.
- LADIES ROOM (2005)**: Located to the right of the kitchenette.
- CONFERENCE ROOM (2005)**: Located in the bottom right corner.
- OFFICE #1 (2005)**: Located in the bottom center.
- HALL (2005)**: A central hallway connecting the rooms.
- RECEPTIONIST (2005)**: Located in the bottom left corner.
- RECEPTIONIST (2005)**: Located in the bottom right corner.

A red outline highlights a specific area on the left side of the plan, including the OFFICE (2005), the two HVAC units, the RECEPTIONIST (2005), and the PILL ROOM (2005).

For Lease
Medical/Office

Suite 301B (+/- 1,411sf)

Suite 300B (+/- 1,514 sf)



Suite 301A (+/- 1,286 sf)

Suite 300A (+/- 1,275 sf)

For Lease Medical/Office

