



9590 BUILDING

9590 NW 25TH ST, DORAL, FL 33172

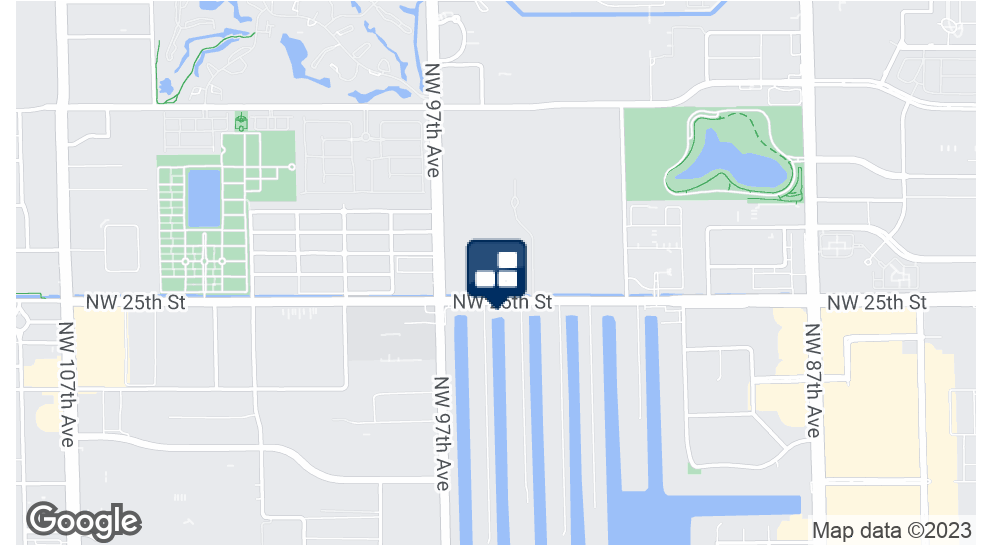
FOR LEASE



Robert Meneses, PA | Broker | 305.500.5554 | robert@kaizenre.com

EXECUTIVE SUMMARY

9590 NW 25TH ST, DORAL, FL 33172



Lease Rate

\$25.00 SF/YR

OFFERING SUMMARY

Building Size:	25,196 SF
Available SF:	4,850 SF
Year Built:	1986
Zoning:	7600

PROPERTY OVERVIEW

A unique opportunity to lease a 4,850 square foot corner office space in Doral. The unit is located on NW 25th Street and 96th Avenue, and it offers frontage on NW 25th Street. The space is fully renovated and has a grand office entrance, making it ideal for a Fortune 500 company. It is also available for immediate occupancy. The space features 12 private offices, 1 conference room, 2 bullpen areas, a lunchroom, a reception area, a waiting area, and 4 restrooms with a shower. It is also fully air-conditioned and has 24 parking spaces. The rent is full service, net of janitorial. This means that the rent includes CAM, electricity, and water. The tenant is responsible for their own internet.

LOCATION OVERVIEW

Doral 25th Street Corridor is a major commercial corridor in Doral, Florida. It is located in the heart of the city, and is home to a variety of businesses, including restaurants, shops, and office buildings. The corridor is a six-lane divided highway that connects Doral to Miami and other parts of South Florida.

ADDITIONAL PHOTOS

9590 NW 25TH ST, DORAL, FL 33172

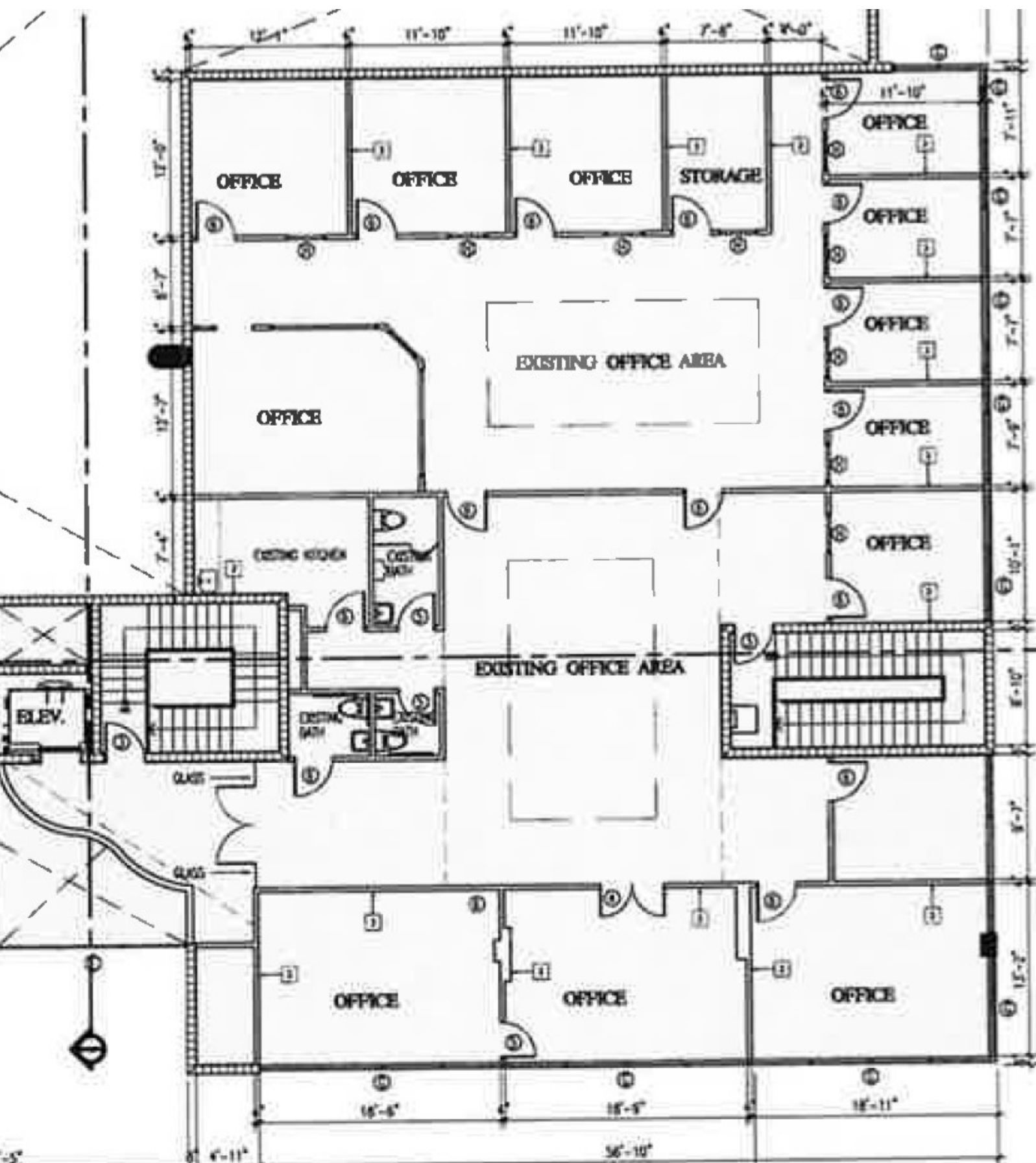


ADDITIONAL PHOTOS

9590 NW 25TH ST, DORAL, FL 33172

Kaizen
REALTY PARTNERS





LOCATION MAP

9590 NW 25TH ST, DORAL, FL 33172

