

# RESIDENTIAL PROPERTY FOR SALE UNIMPROVED LAND

Gaither Road, Sykesville, MD 21784  
Available: 3.89 Acres

**BEST DEAL IN HOWARD COUNTY!**



## LISTING DATA

**AVAILABLE ACRES:** 3.89

## ECONOMIC DATA

**SALE PRICE:** \$149,000

## PROPERTY INFORMATION

**COUNTY:** Howard  
**SUBMARKET:** Sykesville

## PROPERTY OVERVIEW

This lot has not been engineered for determination of the building envelope/ no percolation well or septic approvals have been investigated or obtained

## LOCATION OVERVIEW

Very private, rural residential building lot in the desirable town of Sykesville

## PROPERTY HIGHLIGHTS

- Large 3.89-acre lot in desirable Sykesville
- Beautiful country setting yet close to amenities
- Priced for quick sale - best deal in Howard County!

**Steve Weiss**  
Senior Vice President  
443.741.4051  
sweiss@lee-associates.com

All information furnished regarding property for sale, rental or financing is from sources deemed reliable, but no warranty or representation is made to the accuracy thereof and same is submitted to errors, omissions, change of price, rental or other conditions prior to sale, lease or financing or withdrawal without notice. No liability of any kind is to be imposed on the broker herein.

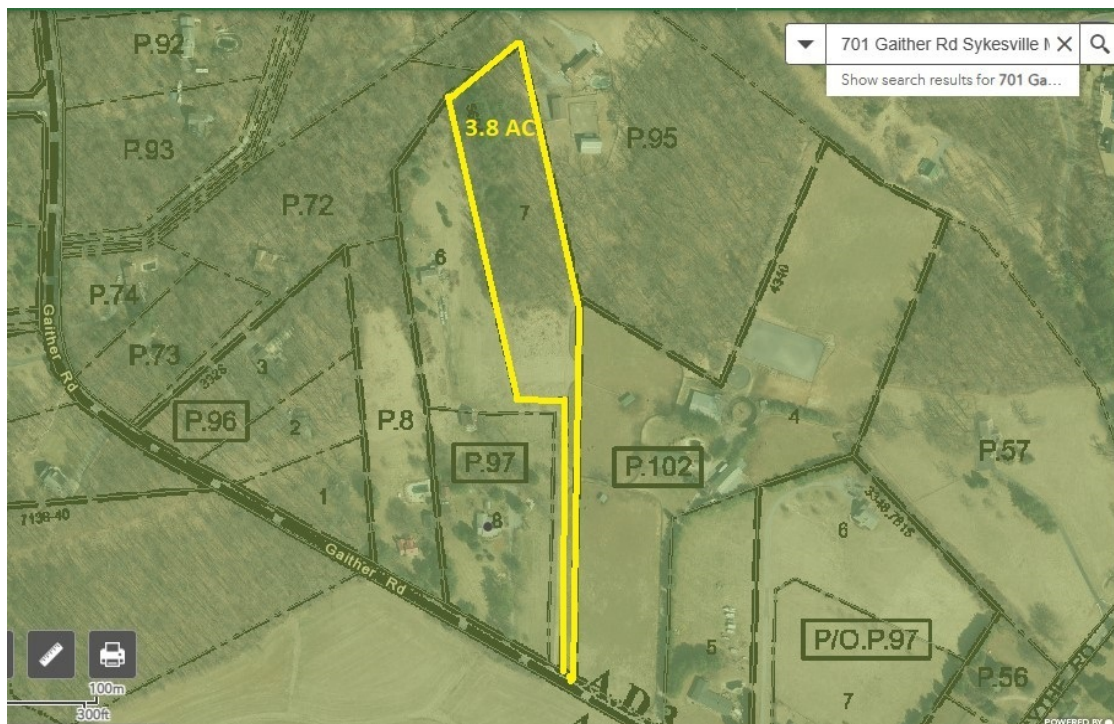


# RESIDENTIAL PROPERTY FOR SALE UNIMPROVED LAND

Gaither Road, Sykesville, MD 21784

Available: 3.89 Acres

**LEE & ASSOCIATES**  
COMMERCIAL REAL ESTATE SERVICES



**Steve Weiss**  
Senior Vice President  
443.741.4051  
sweiss@lee-associates.com

All information furnished regarding property for sale, rental or financing is from sources deemed reliable, but no warranty or representation is made to the accuracy thereof and same is submitted to errors, omissions, change of price, rental or other conditions prior to sale, lease or financing or withdrawal without notice. No liability of any kind is to be imposed on the broker herein.

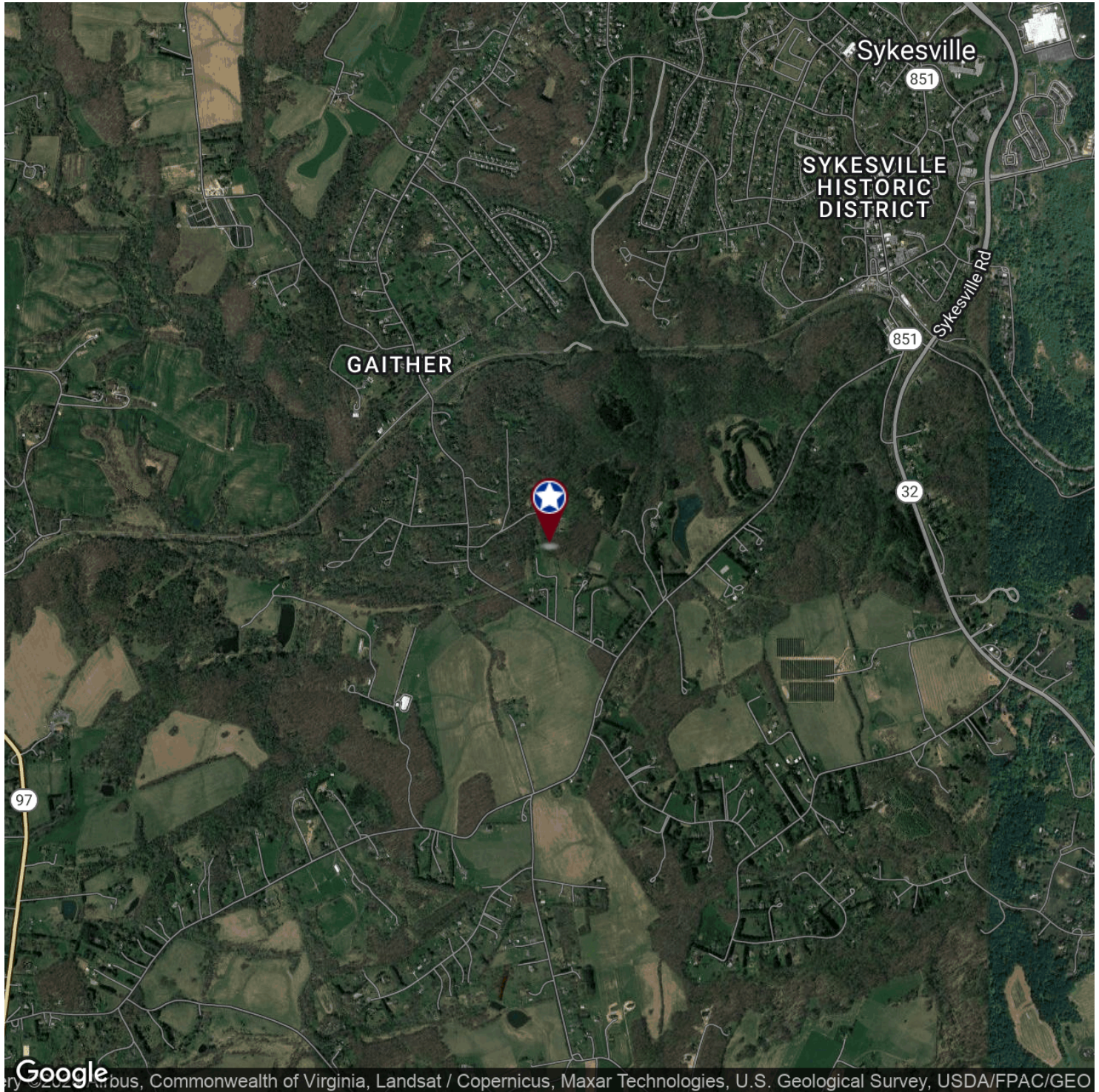


# RESIDENTIAL PROPERTY FOR SALE UNIMPROVED LAND

Gaither Road, Sykesville, MD 21784

Available: 3.89 Acres

**LEE & ASSOCIATES**  
COMMERCIAL REAL ESTATE SERVICES



**Steve Weiss**  
Senior Vice President  
443.741.4051  
[sweiss@lee-associates.com](mailto:sweiss@lee-associates.com)

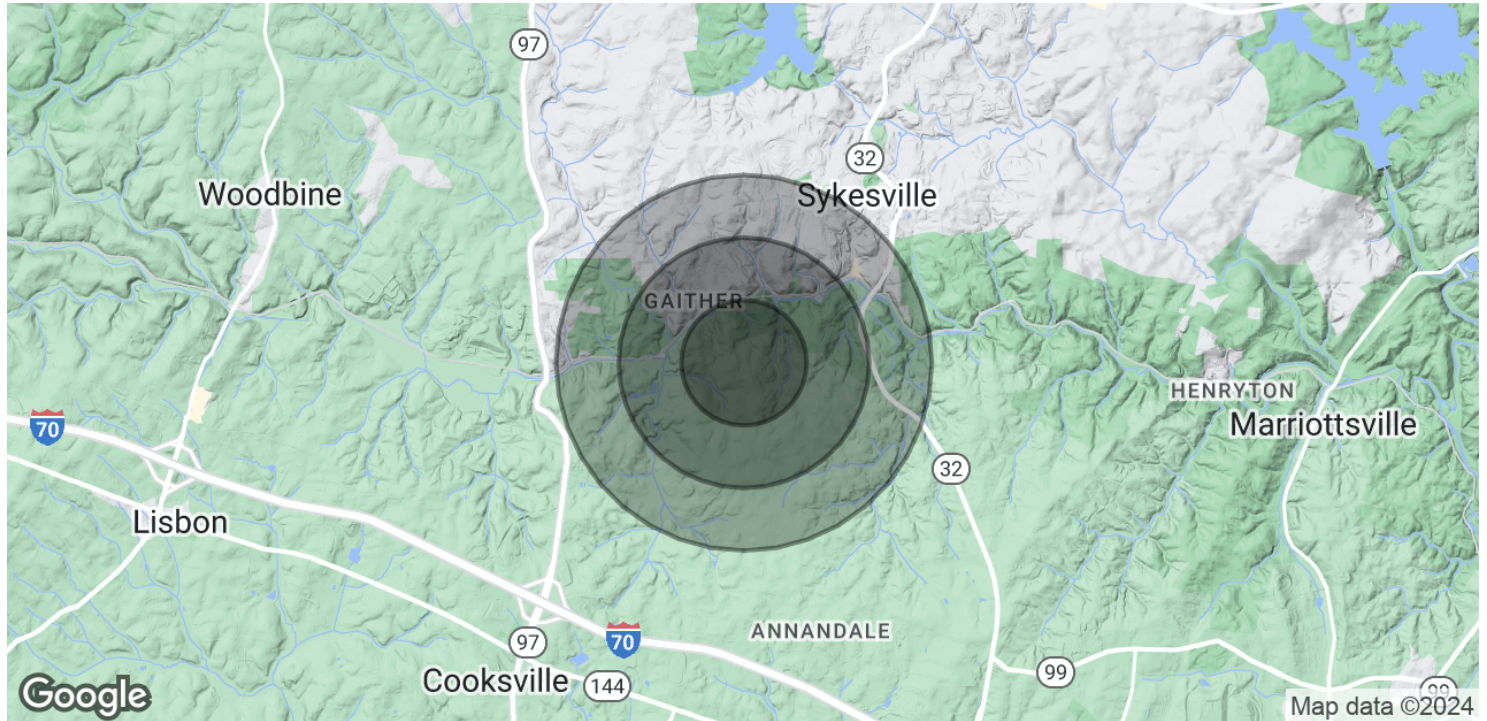
All information furnished regarding property for sale, rental or financing is from sources deemed reliable, but no warranty or representation is made to the accuracy thereof and same is submitted to errors, omissions, change of price, rental or other conditions prior to sale, lease or financing or withdrawal without notice. No liability of any kind is to be imposed on the broker herein.



# RESIDENTIAL PROPERTY FOR SALE UNIMPROVED LAND

Gaither Road, Sykesville, MD 21784

Available: 3.89 Acres



## POPULATION

	0.5 MILES	1 MILE	1.5 MILES
Total Population	914	3,860	7,407
Average Age	38.2	39.4	39.1
Average Age (Male)	29.7	31.9	34.3
Average Age (Female)	41.9	42.7	41.6

## HOUSEHOLDS & INCOME

	0.5 MILES	1 MILE	1.5 MILES
Total Households	334	1,421	2,680
# of Persons per HH	2.7	2.7	2.8
Average HH Income	\$138,171	\$130,334	\$128,446
Average House Value	\$424,019	\$402,318	\$376,146

\* Demographic data derived from 2020 ACS - US Census

**Steve Weiss**  
Senior Vice President  
443.741.4051  
sweiss@lee-associates.com

All information furnished regarding property for sale, rental or financing is from sources deemed reliable, but no warranty or representation is made to the accuracy thereof and same is submitted to errors, omissions, change of price, rental or other conditions prior to sale, lease or financing or withdrawal without notice. No liability of any kind is to be imposed on the broker herein.