

**NURSING HOME OR DAYCARE PROPERTY // FOR SALE**

## **7,500 SF BUILDING IDEAL FOR NURSING HOME OR DAYCARE**

9298 WYOMING AVE  
DETROIT, MI 48204



- Value-add redevelopment project
- Two-story building on a corner lot
- 3,995 SF on lower-level
- Located just south of I-96
- Elevator in place but needs work
- 6-8 rooms, 3-5 restrooms on all 3 levels



**P.A. COMMERCIAL**  
Corporate & Investment Real Estate

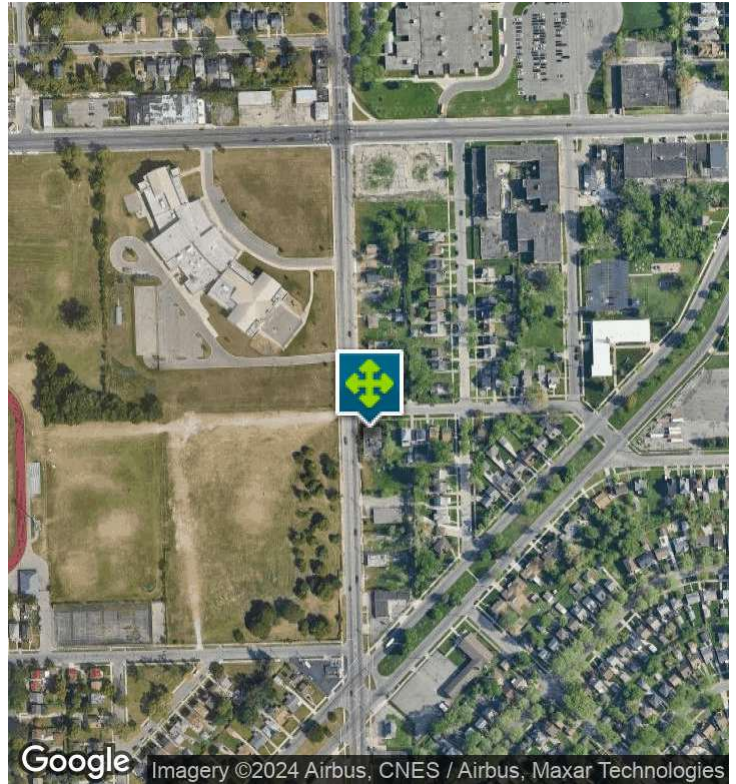
26555 Evergreen Road, Suite 1500  
Southfield, MI 48076  
248.358.0100  
[pacommercial.com](http://pacommercial.com)

We obtained the information above from sources we believe to be reliable. However, we have not verified its accuracy and make no guarantee, warranty or representation about it. It is submitted subject to the possibility of errors, omissions, change of price, rental or other conditions, prior sale, lease or financing, or withdrawal without notice. We include projections, opinions, assumptions or estimates for example only, and they may not represent current, past or future performance of the property. You and your tax and legal advisors should conduct your own investigation of the property and transaction.



9298 WYOMING AVE, DETROIT, MI 48204 // FOR SALE

## EXECUTIVE SUMMARY



Sale Price	\$169,000
------------	-----------

### OFFERING SUMMARY

Building Size:	7,500 SF
Lot Size:	0.21 Acres
Price / SF:	\$22.53
Year Built:	1968
Zoning:	R1
Market:	Detroit
Traffic Count:	7,200

### PROPERTY OVERVIEW

Two-story 7,500 brick building on a fenced lot in Detroit is ideal for a nursing home or daycare facility. This is a great redevelopment opportunity. Located directly across from Mackenzie Elementary School.

### LOCATION OVERVIEW

Located in the Barton-McFarland Neighborhood of Detroit, in between W Chicago Rd and Oakman Blvd. Just southwest of I-96.

### PROPERTY HIGHLIGHTS

- Value-add redevelopment project
- Two-story building on a corner lot
- 3,995 SF on lower-level
- Located just south of I-96
- Elevator in place but needs work
- 6-8 rooms, 3-5 restrooms on all 3 levels



**P.A. COMMERCIAL**  
Corporate & Investment Real Estate

**Kevin Bull** SENIOR ASSOCIATE  
D: 248.358.5361 | C: 248.895.9972  
kevin@pacommercial.com

We obtained the information above from sources we believe to be reliable. However, we have not verified its accuracy and make no guarantee, warranty or representation about it. It is submitted subject to the possibility of errors, omissions, change of price, rental or other conditions, prior sale, lease or financing, or withdrawal without notice. We include projections, opinions, assumptions or estimates for example only, and they may not represent current, past or future performance of the property. You and your tax and legal advisors should conduct your own investigation of the property and transaction.

9298 WYOMING AVE, DETROIT, MI 48204 // FOR SALE

## PROPERTY DETAILS

Sale Price	\$169,000
------------	-----------

### LOCATION INFORMATION

Street Address	9298 Wyoming Ave
City, State, Zip	Detroit, MI 48204
County	Wayne
Market	Detroit
Cross-Streets	Wyoming Ave & Oakman Blvd
Side of the Street	East
Signal Intersection	No
Road Type	Paved
Market Type	Large
Nearest Highway	I-96

### BUILDING INFORMATION

Building Size	7,500 SF
Occupancy %	0.0%
Tenancy	Single
Number of Floors	2
Average Floor Size	3,995 SF
Year Built	1968
Construction Status	Existing
Free Standing	Yes
Number of Buildings	1

### PROPERTY INFORMATION

Property Type	Nursing Home or Daycare
Property Subtype	Other
Zoning	R1
Lot Size	0.21 Acres
Lot Frontage	126 ft
Lot Depth	85 ft
Corner Property	Yes
Traffic Count	7200
Traffic Count Street	Wyoming Ave
Waterfront	No
Power	Yes

### PARKING & TRANSPORTATION

Parking Type	Surface
--------------	---------

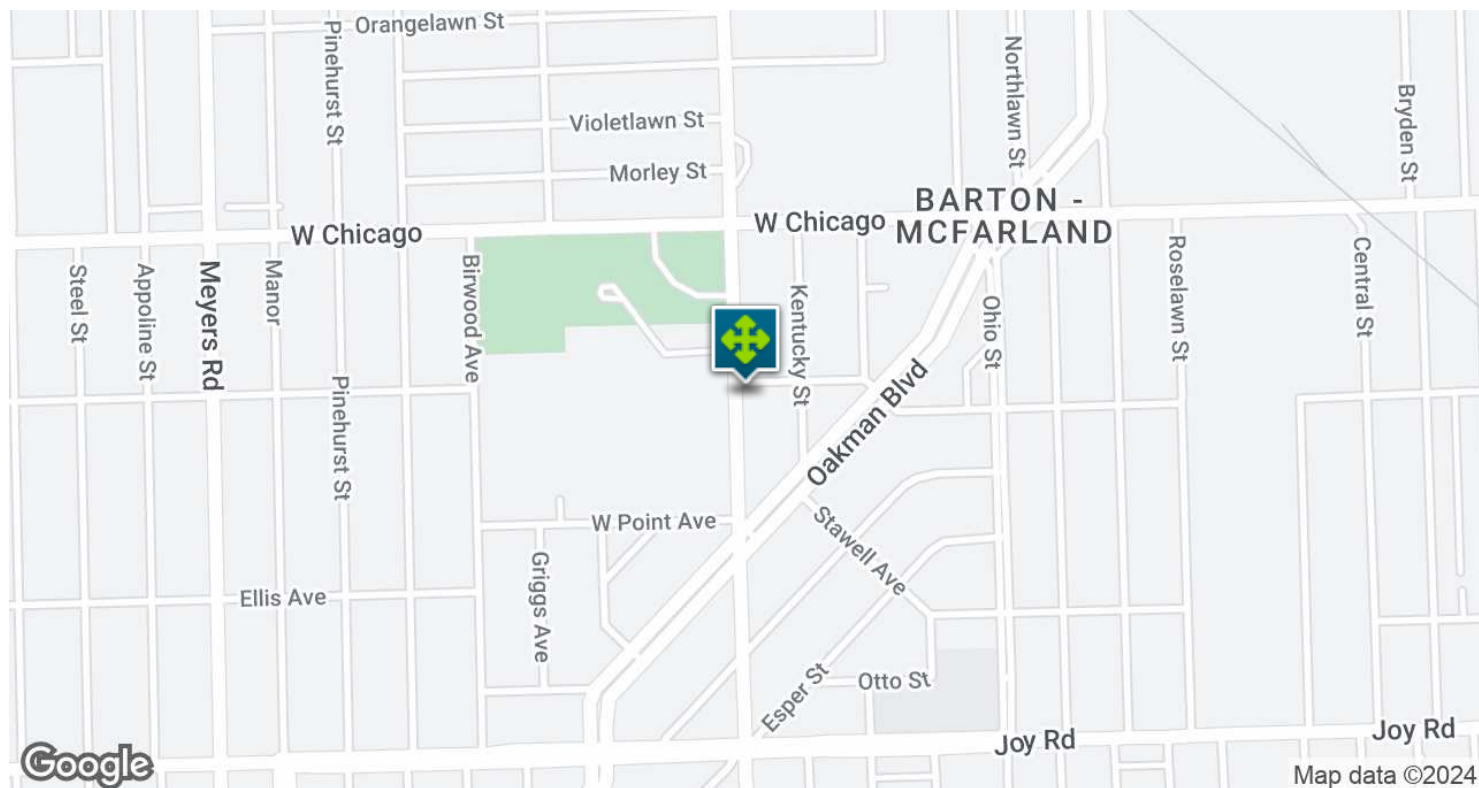
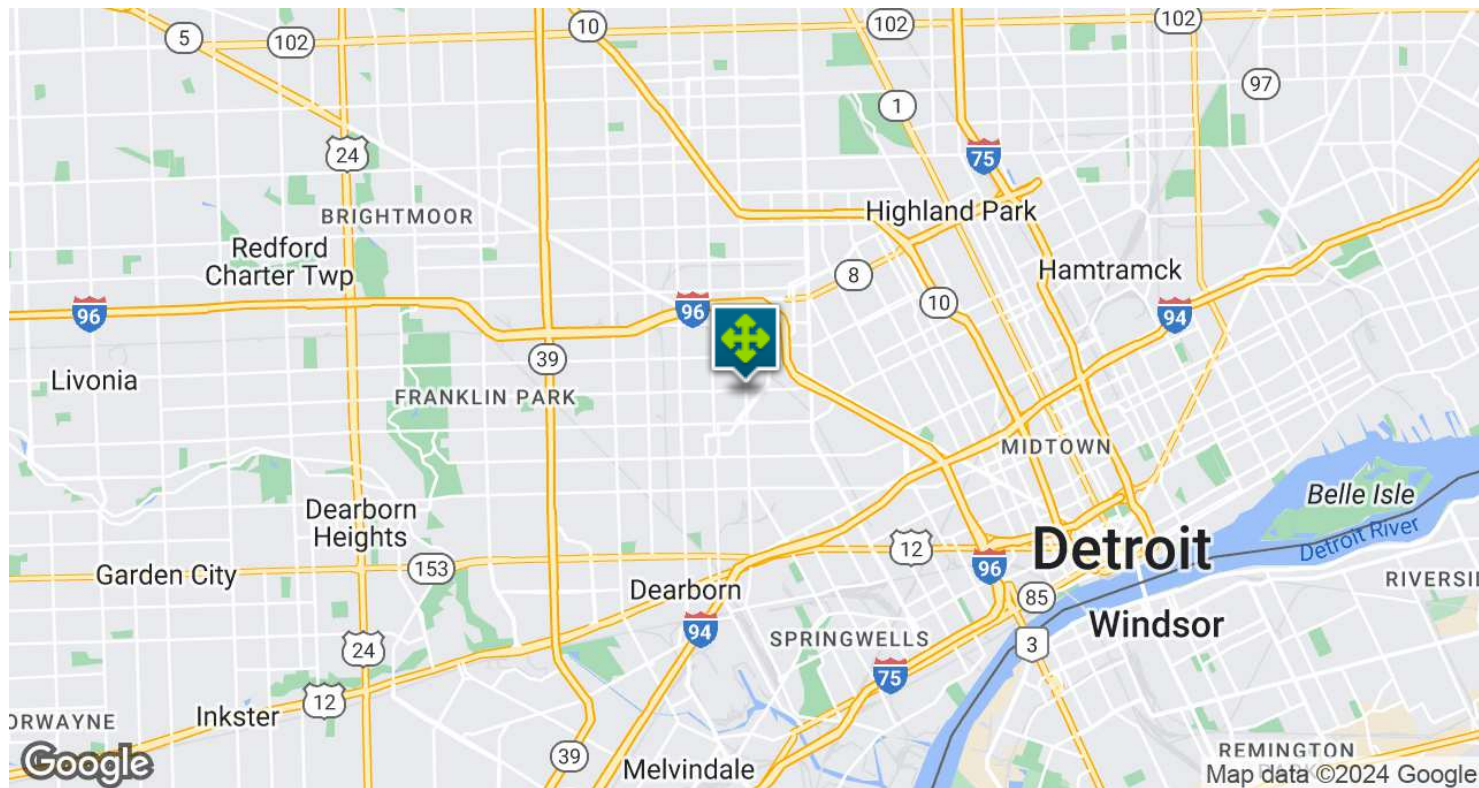
### UTILITIES & AMENITIES

Gas / Propane	Yes
---------------	-----



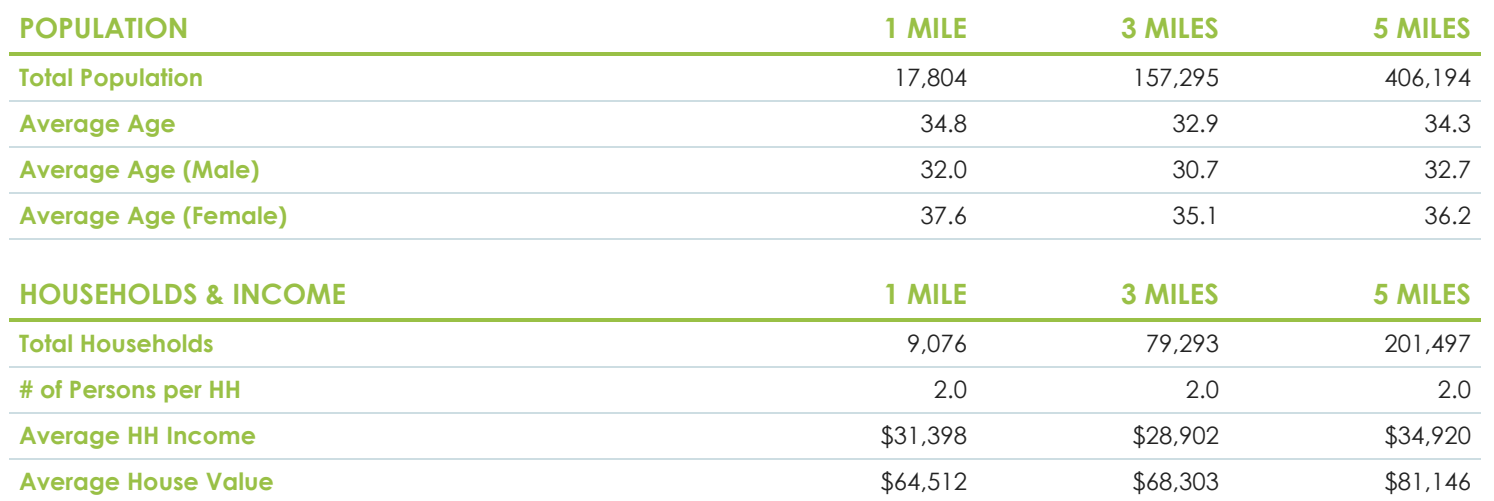
9298 WYOMING AVE, DETROIT, MI 48204 // FOR SALE

## LOCATION MAP





# DEMOGRAPHICS MAP & REPORT



**P.A. COMMERCIAL**  
Corporate & Investment Real Estate

**Kevin Bull** SENIOR ASSOCIATE  
D: 248.358.5361 | C: 248.895.9972  
kevin@pacommercial.com

We obtained the information above from sources we believe to be reliable. However, we have not verified its accuracy and make no guarantee, warranty or representation about it. It is submitted subject to the possibility of errors, omissions, change of price, rental or other conditions, prior sale, lease or financing, or withdrawal without notice. We include projections, opinions, assumptions or estimates for example only, and they may not represent current, past or future performance of the property. You and your tax and legal advisors should conduct your own investigation of the property and transaction.

9298 WYOMING AVE, DETROIT, MI 48204 // FOR SALE



FOR MORE INFORMATION, PLEASE CONTACT:



**Kevin Bull**  
SENIOR ASSOCIATE  
**D:** 248.358.5361  
**C:** 248.895.9972  
kevin@pacommercial.com

**P.A. Commercial**  
26555 Evergreen Road, Suite 1500  
Southfield, MI 48076

**P:** 248.358.0100  
**F:** 248.358.5300

[pacommercial.com](http://pacommercial.com)

Follow Us!



**P.A. COMMERCIAL**  
Corporate & Investment Real Estate

We obtained the information above from sources we believe to be reliable. However, we have not verified its accuracy and make no guarantee, warranty or representation about it. It is submitted subject to the possibility of errors, omissions, change of price, rental or other conditions, prior sale, lease or financing, or withdrawal without notice. We include projections, opinions, assumptions or estimates for example only, and they may not represent current, past or future performance of the property. You and your tax and legal advisors should conduct your own investigation of the property and transaction.