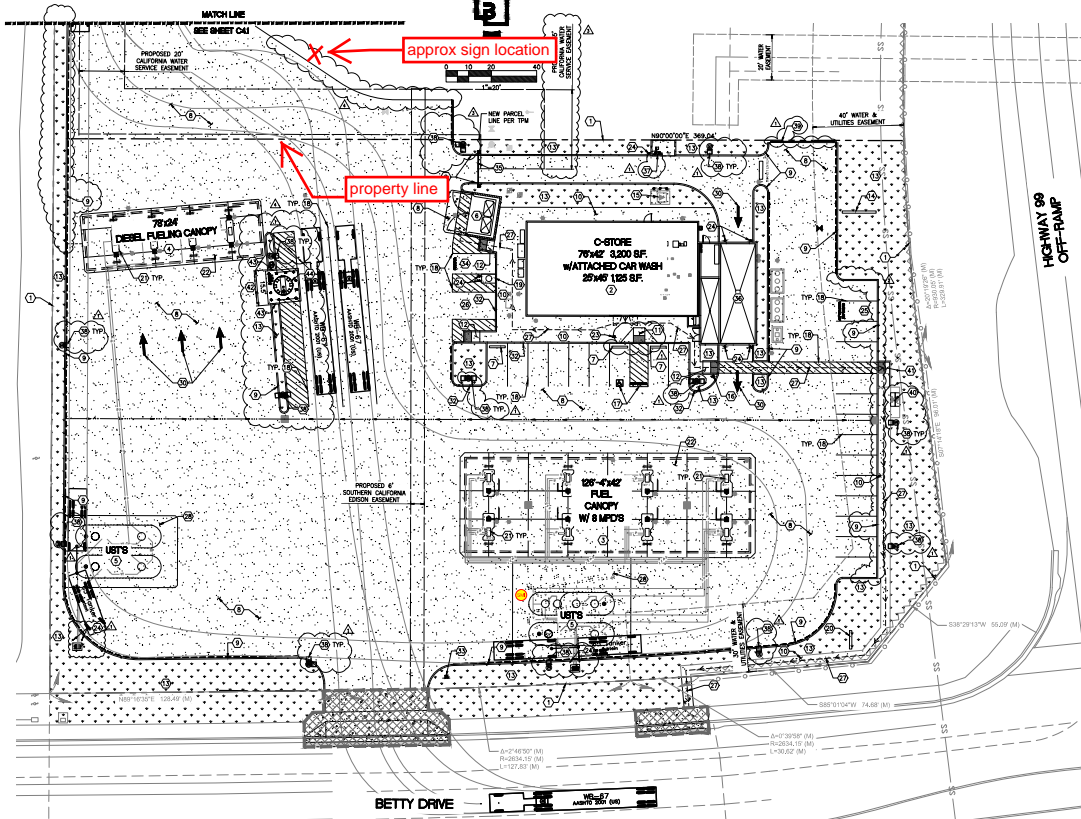


UNITED PACIFIC-GOSHEN, CALIFORNIA
SITE PLAN



ACCESSIBLE PATH OF TRAVEL NOTE:

WALKWAYS ALONG ACCESSIBLE ROUTES OF TRAVEL SHALL BE CONTINUOUSLY ACCESSIBLE, A MINIMUM 48" IN WIDTH, HAVE A MINIMUM 1.5% CROSS SLOPE, AND SHALL HAVE RAMP COMPLIING WITH ACCESSIBILITY STANDARDS (SECTION 11B-402) WHERE NECESSARY TO CHANGE ELEVATION AT A LONGITUDINAL SLOPE EXCEEDING 5% (5:1). CURB RAMP, WHERE PROVIDED, SHALL COMPLY WITH ACCESSIBILITY REQUIREMENTS (SECTION 11B-406) AND BE PROVIDED WITH A CONTINUOUS 36" WIDE DETECTABLE WARNING STRIP MEETING ACCESSIBILITY REQUIREMENTS (SECTION 11B-705) SHALL BE PLACED WHERE A WALK CROSSING OR ADJACENT A VEHICULAR WAY AND IS NOT SEPARATED BY A CURB, RAILING, OR OTHER ELEMENT MEETING ACCESSIBILITY STANDARDS.

LEGEND:

REFER TO SHEET P.L.D.-B3.0
OFF-SITE IMPROVEMENTS PLAN
(UNDER SEPARATE SUBMITTAL)

ACCESSIBLE PATH
FIRE LANE, PAINT CURB RED WITH
"NO PARKING" AT 50' INTERVALS



CONSTRUCTION NOTES

1. LOCATION OF PROPERTY LINE, REFER TO THE ALTA/ALP.S. LAND TITLE SURVEY FOR ADDITIONAL INFORMATION.
2. LOCATION OF CONVENIENCE STORE; CONFIRM ALL DIMENSIONS AND REQUIREMENTS WITH ARCHITECTURAL PLANS.
3. LOCATION OF AUTO FUEL ISLAND WITH OVERHEAD CANOPY; CONFIRM ALL DIMENSIONS AND REQUIREMENTS WITH ARCHITECTURAL AND FUEL PLANS.
4. LOCATION OF 3-LANE HIGH SPEED DIESEL FUEL ISLAND WITH OVERHEAD CANOPY; CONFIRM ALL DIMENSIONS AND REQUIREMENTS WITH ARCHITECTURAL AND FUEL PLANS.
5. LOCATION OF UNDERGROUND STORAGE TANKS; REFER TO TANK PLANS FOR ADDITIONAL INFORMATION.
6. LOCATION OF SOLID WASTE ENCLOSURE; SIGN STATING "DO NOT DUMP HAZARDOUS MATERIALS HERE" WILL BE INSTALLED WITHIN THE WASTE ENCLOSURE; CONFIRM ALL DIMENSIONS AND REQUIREMENTS WITH ARCHITECTURAL PLANS.
7. INSTALL WHEEL STOP PER DETAIL 5/C.S.1.
8. CONSTRUCT CONCRETE PAVING PER DETAIL 2/C.S.0. PROVIDE EXPANSION AND CONTRACTION JOINTS PER DETAILS 3, 4 AND 5 ON SHEET C.S.0.
9. CONSTRUCT 6" ON-SITE BARRIER CURB PER DETAIL 7/C.S.0.
10. CONSTRUCT CONCRETE SIDEWALK (WIDTH VARIES) PER DETAIL 6/C.S.0.
11. RECONSTRUCT ACCESSIBLE CURB RAMP COMPLYING WITH SECTION 11B-406 OF THE 2018 CALIFORNIA BUILDING CODE; REFER TO CALIFORNIA 2018 REVISIONS STANDARD PLAN RSP ARRA CASE A FOR CONSTRUCTION REQUIREMENTS (SEE SHEET C.S.1 FOR DETAIL).
12. RECONSTRUCT ACCESSIBLE CURB RAMP COMPLYING WITH SECTION 11B-406 OF THE 2018 CALIFORNIA BUILDING CODE; REFER TO CALIFORNIA 2018 REVISIONS STANDARD PLAN RSP ARRA CASE A FOR CONSTRUCTION REQUIREMENTS (SEE SHEET C.S.1 FOR DETAIL).
13. LANDSCAPING AREA; REFER TO LANDSCAPING PLANS FOR ADDITIONAL INFORMATION.
14. LOCATION OF PYLON SIGN; REFER TO ARCHITECTURAL PLANS FOR ADDITIONAL INFORMATION.
15. (X) MOUNTED ELECTRICAL TRANSFORMER PER C.S.1.
16. LOCATION OF CAR WASH TIMES PER ARCHITECTURAL AND CAR WASH PLANS.
17. INSTALL ACCESSIBLE COMPLIANT PARKING SPACE PER DETAIL 3, 4 AND 5 ON SHEET C.S.1.
18. PAINT 4" WIDE WHITE REFLECTIVE PAINT STRIPES, TYPICAL.
19. INSTALL AIR/VACUUM UNIT; REFER TO ARCHITECTURAL PLANS FOR ADDITIONAL INFORMATION.
20. INSTALL DOUBLE SIDED MONUMENT 6"/PRICE SIGN (REFER TO STORAGE PLANS) BY OTHERS.
21. INSTALL MULTI-PRODUCT DISPENSER (MPD) WITH GUARD POST (TYPICAL OF 8 FOR AUTO ISLAND AND 4 FOR DIESEL ISLANDS); REFER TO TANK PLANS FOR ADDITIONAL INFORMATION.
22. CONSTRUCT FUEL ISLAND CONCRETE SLAB; REFER TO CANOPY PLANS FOR ADDITIONAL INFORMATION.
23. INSTALL ACCESSIBLE PARKING SIGN PER DETAIL 5/C.S.1.
24. INSTALL GUARD POST PER DETAIL 3/C.S.1 (TYPICAL).
25. LOCATION OF CLEAN AIR/VINYL POOL/VEH PARKING SPACE COMPLYING WITH SECTION 5.106.3.3 OF THE 2018 CALIFORNIA GREEN BUILDING STANDARDS.
26. LOCATION OF FUTURE 400V ACCESSIBLE ELECTRIC VEHICLE CHARGING STATION; COMPLYING WITH ALL REQUIREMENTS OF SECTION 5.106.3.3 OF THE 2018 CALIFORNIA GREEN BUILDING STANDARDS CODE AND SECTION 11B-406 OF THE 2018 CALIFORNIA BUILDING CODE. STUDY CONDUIT FOR FUTURE CHARGING STATION.
27. ACCESSIBLE PATH; SEE ACCESSIBLE PATH OF TRAVEL NOTE THIS SHEET.
28. CONSTRUCT CONCRETE PAVING OVER UNDERGROUND STORAGE TANKS; REFER TO FUEL PLANS FOR ADDITIONAL INFORMATION.
29. LOCATION OF CAR WASH PORTAL PER ARCHITECTURAL AND CAR WASH PLANS.
30. PAINT PAVEMENT MARKING PER DETAIL 4/C.S.1, TYPICAL.
31. NOT USED.
32. CONSTRUCT 4" ON-SITE CURB BARRIER PER DETAIL 7/C.S.0.
33. INSTALL "UNAUTHORIZED VEHICLE..." SIGN PER DETAIL 1/C.S.3 AND 5/C.S.1.
34. LOCATION OF VACUUM SPACE, TYPICAL OF 1/C.S.1.
35. INSTALL CAR WASH CLEARANCE BAR PER ARCHITECTURAL AND CAR WASH PLANS.
36. LOCATION OF CAR WASH, CONFIRM ALL DIMENSIONS AND REQUIREMENTS WITH ARCHITECTURAL PLANS.
37. LOCATION OF CAR WASH PAY BOOTH; CONFIRM ALL DIMENSIONS AND REQUIREMENTS WITH ARCHITECTURAL PLANS.
38. CONSTRUCT AND INSTALL LOT LIGHT; CONFIRM ALL DIMENSIONS AND REQUIREMENTS WITH ELECTRICAL PLANS.
39. CONSTRUCT 28 LF TEMPORARY BARRICADE PER TULARE COUNTY STANDARD PLATE A-23.
40. INSTALL BIKE RACK, TYPICAL OF 1 (2 SPACES); SEE DETAIL 2/C.S.3.
41. CONSTRUCT ACCESSIBLE CURB RAMP COMPLYING WITH SECTION 11B-406 OF THE 2018 CALIFORNIA BUILDING CODE; REFER TO CALIFORNIA 2018 REVISIONS STANDARD PLAN RSP ARRA CASE A FOR CONSTRUCTION REQUIREMENTS (SEE SHEET C.S.1 FOR DETAIL).
42. APPROXIMATE LIMITS OF CURB TO BE DEMOLISHED.
43. RECONSTRUCT ON-SITE BARRIER CURB PER DETAIL 7/C.S.0. EXPOSED CURB HEIGHT SHALL VARY TO ACHIEVE DESIRED FINISH SLAB ELEVATION (MAX 9"-MIN 0").
44. PREPROPOSED LOCATION OF ABOVE GROUND DUMP TANK; SEE FUEL PLANS FOR TANK INFORMATION, BOLLARD PLACEMENT AND ADDITIONAL DETAILS. SEE STRUCTURAL PLANS FOR SLAB DETAILS.



Know what's below.
Call before you dig.
Dial 811

SITE PLAN
BETTY DRIVE • HIGHWAY 99
GOSHEN, CALIFORNIA

EMBRÉE
4747 WILLIAMS DRIVE
GEORGETOWN, TX 78633

For
KACKEY C. HELD
KACKEY C. HELD
KACKEY C. HELD

Drawn: JSD
Checked: JSD
Approved: JSD
Date: 11/2/20

Engineering Engineers, Inc.
20962
20962

20962
20962

20962
20962