

OLD HANOVER ROAD

2010 Thistle Hill Dr, Spring Grove, PA 17362 • Opportunities up to 0.96 Acres



OLD HANOVER ROAD: DETAILS

2010 Thistle Hill Dr, Spring Grove, PA 17362 • Opportunities Up To 0.96 Acres

Benefits



- Adjacent to Dollar General
- Medical uses nearby
- .96 acres
- Retail or Office uses

More Info

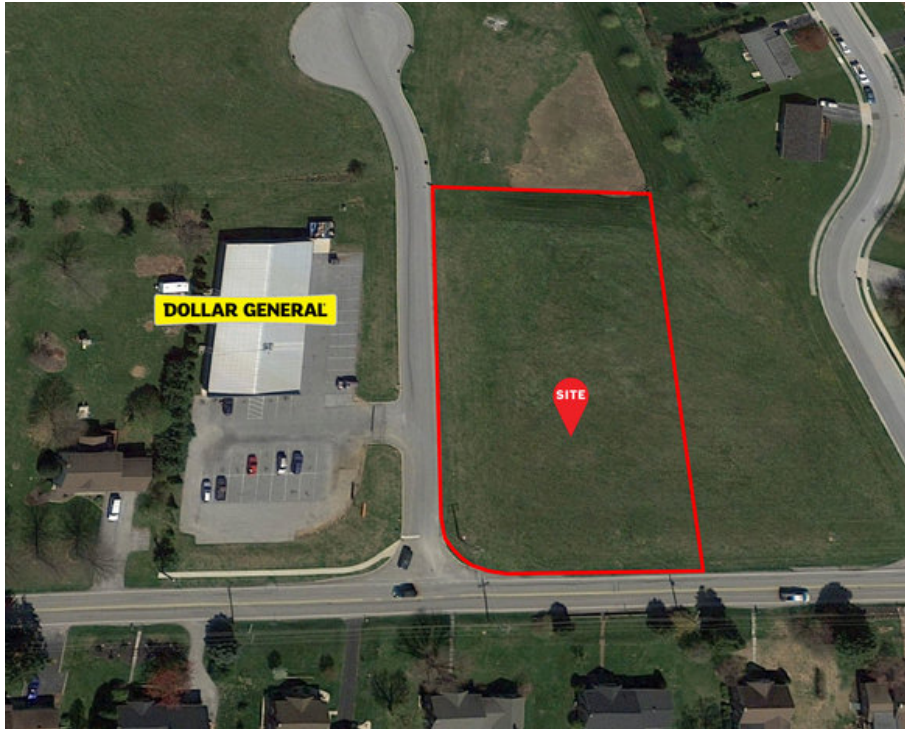


Bob Behler
bbehler@bennettwilliams.com



OLD HANOVER ROAD: EXECUTIVE SUMMARY

2010 Thistle Hill Dr, Spring Grove, PA 17362 • Opportunities Up To 0.96 Acres



PROPERTY SUMMARY

Sale Price:	\$225,000
Property Type:	Land
Lot Size:	0.96 Acres
APN #:	67-33-000-GF-0065-CO-00000
Zoning:	COMMERCIAL
Market:	York-Hanover

PROPERTY OVERVIEW

Excellent buildable lot for retail or office uses. Adjacent to Dollar General and Thistle Hill Professional Center that includes several Hanover Hospital affiliates.

PROPERTY HIGHLIGHTS

- Jackson Township
- Zoned Commercial
- Utilities available

DEMOGRAPHICS

	1 Mile	5 Miles	10 Miles
Total Households:	1,220	10,176	83,442
Total Population:	3,036	26,073	209,837
Average HH Income:	\$71,813	\$79,172	\$71,649

Information shown is purported to be from reliable sources. No representation is made to the accuracy thereof, and is submitted subject to errors, omissions, change in price, prior sale, withdrawal without notice, or other conditions.

OLD HANOVER ROAD: MARKET OVERVIEW

2010 Thistle Hill Dr, Spring Grove, PA 17362 • Opportunities Up To 0.96 Acres

