

# 931 SOUTH MEMORIAL DRIVE

PRATTVILLE, AL 36067

## Executive Summary



### OFFERING SUMMARY

Available SF: 1,748 SF

Lease Rate: \$2,000.00 per month (NN)

Lot Size: 0.19 Acres

Building Size: 1,748

### PROPERTY HIGHLIGHTS

- Fully Renovated Office building located in Prattville, AL
- Ample parking for employees & customers
- Traffic Counts of 29,150± AADT on S. Memorial Dr.
- 0.2± Miles from Main St.
- 0.6± Miles from Highway 14
- 1.4± Miles from Downtown Prattville, AL
- 2.0± Miles from Highway 82
- 4.7± Miles from I-65



JON MASTERS, CCIM

334.387.2724  
Jmasters@mcrmpm.com

MOORE COMPANY REALTY

312 Catoma St #200, Montgomery, AL 36104  
334.262.1958 | moorecompanyrealty.com



# 931 SOUTH MEMORIAL DRIVE

PRATTVILLE, AL 36067

## Additional Photos



**JON MASTERS, CCIM**

334.387.2724

Jmasters@mcrmpm.com

**MOORE COMPANY REALTY**

312 Catoma St #200, Montgomery, AL 36104

334.262.1958 | moorecompanyrealty.com



# 931 SOUTH MEMORIAL DRIVE

PRATTVILLE, AL 36067

## Demographics

### DEMOGRAPHIC SUMMARY

931 S Memorial Dr, Prattville, Alabama, 36067

Ring of 5 miles

#### KEY FACTS

47,308

Population



18,405

Households

38.1

Median Age

\$52,357

Median Disposable Income

#### EDUCATION

8%

No High School Diploma



31%

High School Graduate



26%

Some College



35%

Bachelor's/Grad/Prof Degree

#### INCOME



\$63,421

Median Household Income



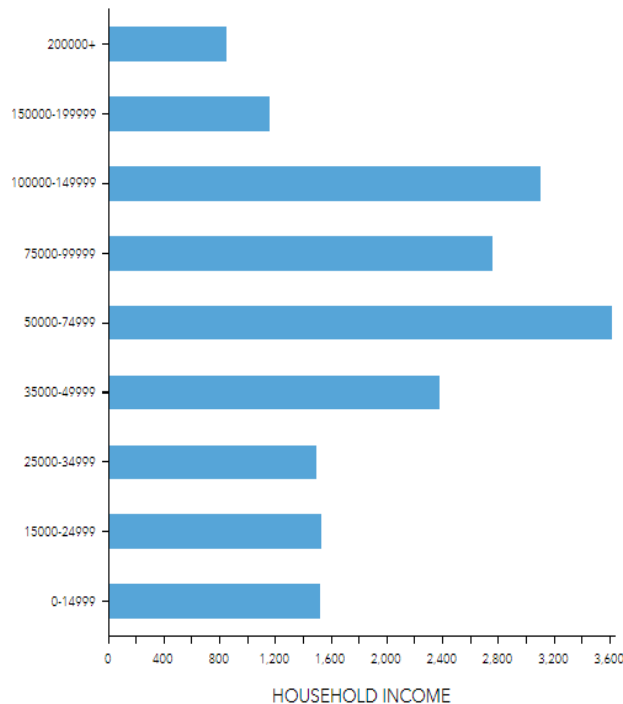
\$33,045

Per Capita Income



\$125,281

Median Net Worth



#### EMPLOYMENT

65%

White Collar

22%

Blue Collar

16%

Services

2.4%

Unemployment Rate

JON MASTERS, CCIM

334.387.2724

Jmasters@mcrmpm.com

MOORE COMPANY REALTY

312 Catoma St #200, Montgomery, AL 36104

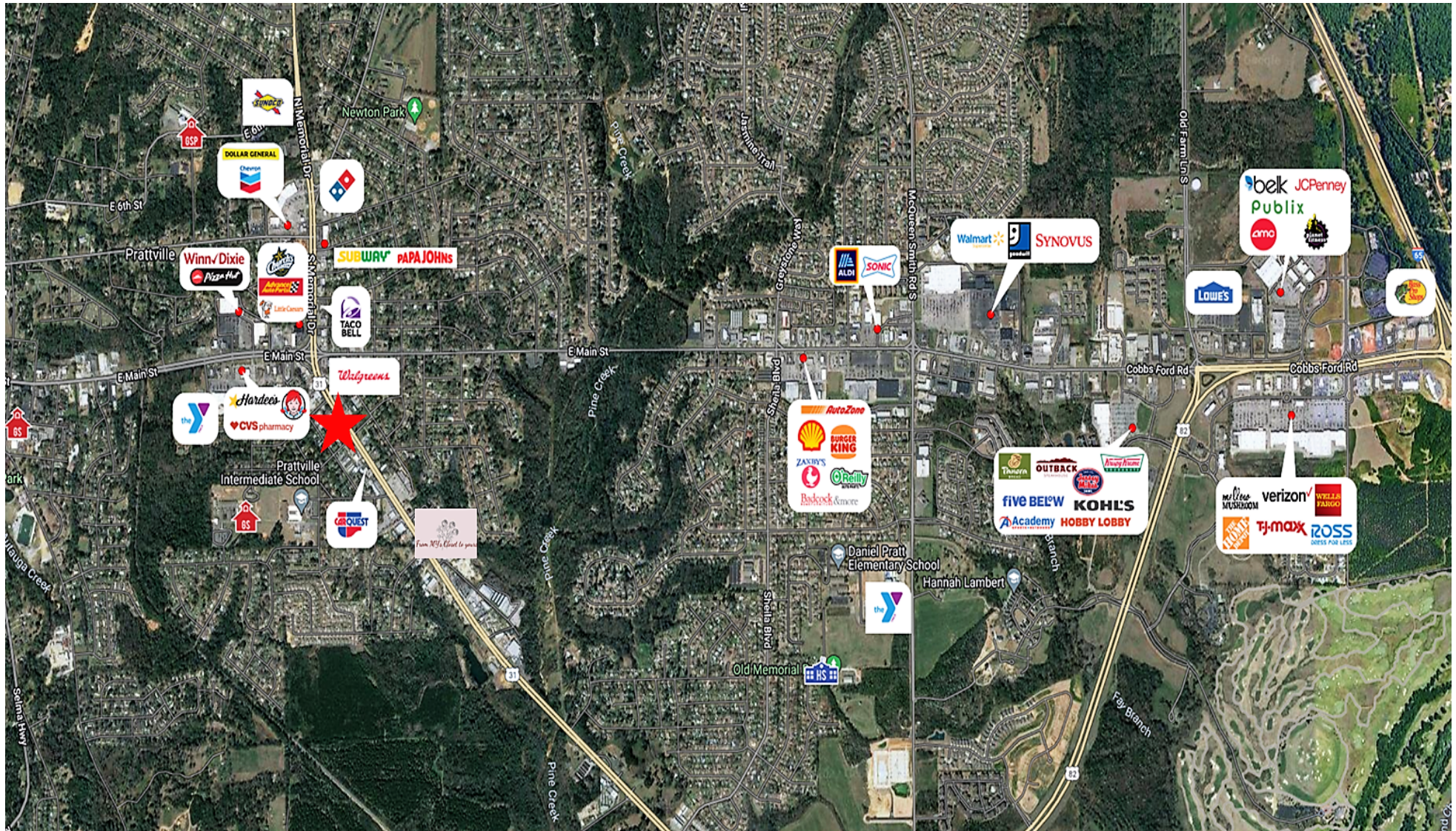
334.262.1958 | moorecompanyrealty.com



# 931 SOUTH MEMORIAL DRIVE

PRATTVILLE, AL 36067

## Retail Map



JON MASTERS, CCIM

334.387.2724

Jmasters@mcrmpm.com

MOORE COMPANY REALTY

312 Catoma St #200, Montgomery, AL 36104

334.262.1958 | moorecompanyrealty.com

