

# 52 Fontanelle Boulevard

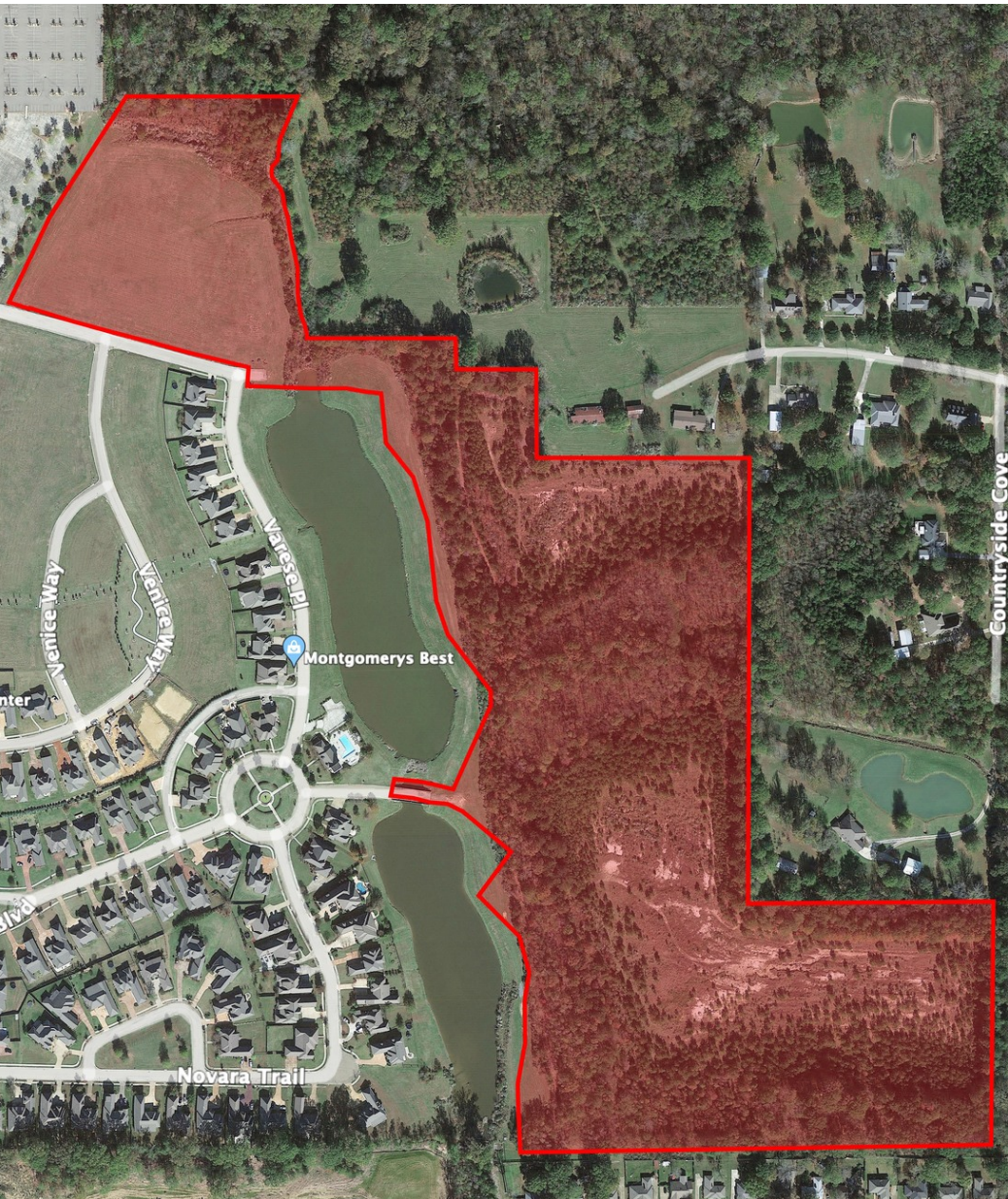
MADISON, MS 39110

## FOR SALE

\$30,700 / acre  
Land

### PROPERTY FEATURES

+/- 52.92 acres in Madison County ready to be developed. Located in an established neighborhood. Proposed conceptual design with lots from 1/4 to 1/3 ac. Approximately 2 miles from proposed 110 interchange (Reunion Pkwy) Co-Brokered with E. David Cox, Broker 601-898-0181



**Jon-David Johnson, CCIM**  
COMMERCIAL/INVESTMENT REAL ESTATE ADVISOR  
601.707.5555  
jondavid.johnson@sperrycga.com  
MS #B-17543

**Kim Bobbitt**  
ASSOCIATE  
601.209.6593  
kim.bobbitt@sperrycga.com  
MS #24085

Each office independently owned and operated.

We obtained the information above from sources we believe to be reliable. However, we have not verified its accuracy and make no guarantee, warranty or representation about it. It is submitted subject to the possibility of errors, omissions, change of price, rental or other conditions, prior sale, lease or financing, or withdrawal without notice. We include projections, opinions, assumptions or estimates for example only, and they may not represent current or future performance of the property. You and your tax and legal advisors should conduct your own investigation of the property and transaction.

[www.SperryCGA.com](http://www.SperryCGA.com)



# 52 Fontanelle Boulevard

MADISON, MS 39110

## FOR SALE

Land



**Jon-David Johnson, CCIM**  
COMMERCIAL/INVESTMENT REAL ESTATE ADVISOR  
601.707.5555  
jondavid.johnson@sperrycga.com  
MS #B-17543

**Kim Bobbitt**  
ASSOCIATE  
601.209.6593  
kim.bobbitt@sperrycga.com  
MS #24085

Each office independently owned and operated.

We obtained the information above from sources we believe to be reliable. However, we have not verified its accuracy and make no guarantee, warranty or representation about it. It is submitted subject to the possibility of errors, omissions, change of price, rental or other conditions, prior sale, lease or financing, or withdrawal without notice. We include projections, opinions, assumptions or estimates for example only, and they may not represent current or future performance of the property. You and your tax and legal advisors should conduct your own investigation of the property and transaction.

[www.SperryCGA.com](http://www.SperryCGA.com)