

# ROCKWELL CREEK INDUSTRIAL PARK

20 N. Rockwell Avenue, Oklahoma City, OK 73127



## OFFERING SUMMARY

Lease Rate:	\$9.20 - 10.00 SF/yr (NNN)
Total Buildings SF:	48,000 SF
Available Contiguous SF:	3,000 - 12,000 SF
Zoning:	I-2
Clear Height:	13'-1" Front to 17'-10" Back Clear Span
Overhead Doors:	14' x 12'
Electrical:	3-Phase 208/120V

## PROPERTY OVERVIEW

Brand new industrial complex with frontage along North Rockwell Avenue just north of West Reno. The site has excellent interstate access being 1/2 mile away from eastbound and westbound I-40 on/off ramps. Flexible floor plans allow for 3,000-12,000 square feet of contiguous space. Each 3,000 square foot space includes 213 square feet of office/restroom space with the remainder being heated warehouse. The complex was designed with wide drive lanes and a truck turnaround which allows for easy, out of the way loading/unloading. The elevated site creates excellent signage visibility and the upscale building design creates a professional environment for your business and clients.

**\*\*Additional office buildout negotiable on preferred and premium suites\*\***

## PROPERTY HIGHLIGHTS

- Excellent access to I-40
- Wide drive lanes allowing for easy loading/unloading
- Truck turnaround on site
- 44,000 daily traffic count at the intersection of W. Reno & Rockwell Ave.
- Yard space available
- Short drive to Will Rogers World Airport
- Heavy duty 6" concrete slab



Adept Commercial Real Estate, LLC  
1 NE 2nd Street, Suite 101  
Oklahoma City, OK 73104

Ryan Gilliland  
405.249.7407  
ryan@adeptcre.com



## ADDITIONAL PHOTOS

# ROCKWELL CREEK INDUSTRIAL PARK

20 N. Rockwell Avenue, Oklahoma City, OK 73127



**Adept Commercial Real Estate, LLC**  
1 NE 2nd Street, Suite 101  
Oklahoma City, OK 73104

**Ryan Gilliland**  
405.249.7407  
ryan@adeptcre.com



ADDITIONAL PHOTOS

# ROCKWELL CREEK INDUSTRIAL PARK

20 N. Rockwell Avenue, Oklahoma City, OK 73127

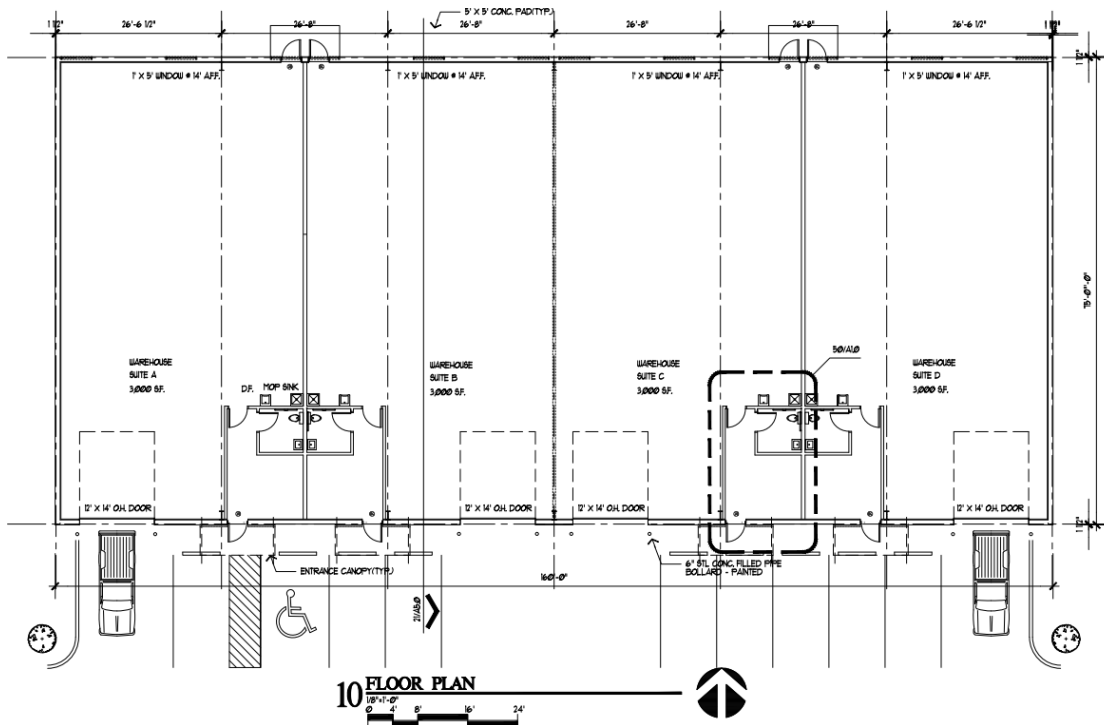
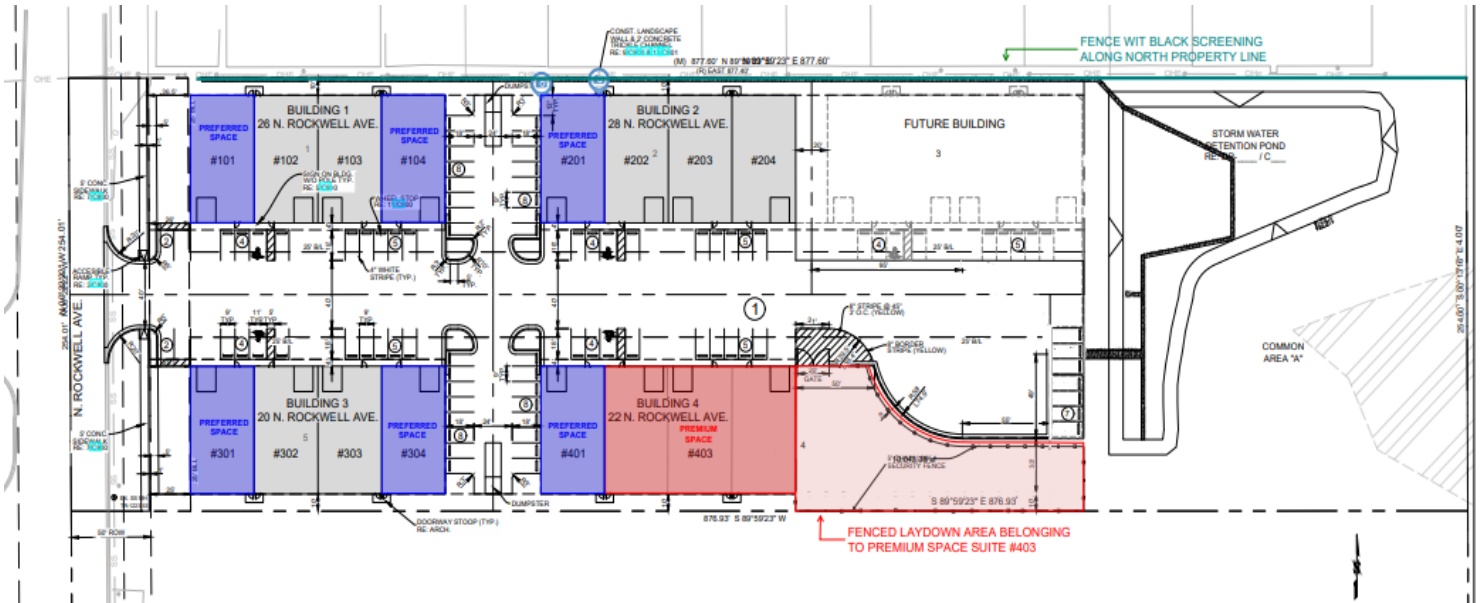


Adept Commercial Real Estate, LLC  
1 NE 2nd Street, Suite 101  
Oklahoma City, OK 73104

Ryan Gilliland  
405.249.7407  
ryan@adeptcre.com

# ROCKWELL CREEK INDUSTRIAL PARK

20 N. Rockwell Avenue, Oklahoma City, OK 73127





# ROCKWELL CREEK INDUSTRIAL PARK

20 N. Rockwell Avenue, Oklahoma City, OK 73127



## AVAILABLE SPACES

SUITE	TENANT	SIZE (SF)	LEASE TYPE	LEASE RATE	DESCRIPTION
Building 1	Available	3,000 - 12,000 SF	NNN	\$9.20 - 9.50 SF/yr	All suites can be combined to create 3,000sf, 6,000sf, 9,000sf, or 12,000sf of contiguous space.
Building 2	Available	3,000 SF	NNN	\$9.20 SF/yr	-
Building 3	Available	3,000 - 9,000 SF	NNN	\$9.20 - 9.50 SF/yr	All suites can be combined to create 3,000sf, 6,000sf or 9,000sf of contiguous space.
Building 4	Available	3,000 - 12,000 SF	NNN	\$9.50 - 10.00 SF/yr	Suite 403 includes approx. 1/4 acre fenced and graveled yard space for outside storage. Suites 401 & 403 can be combined to create 12,000sf of contiguous space.

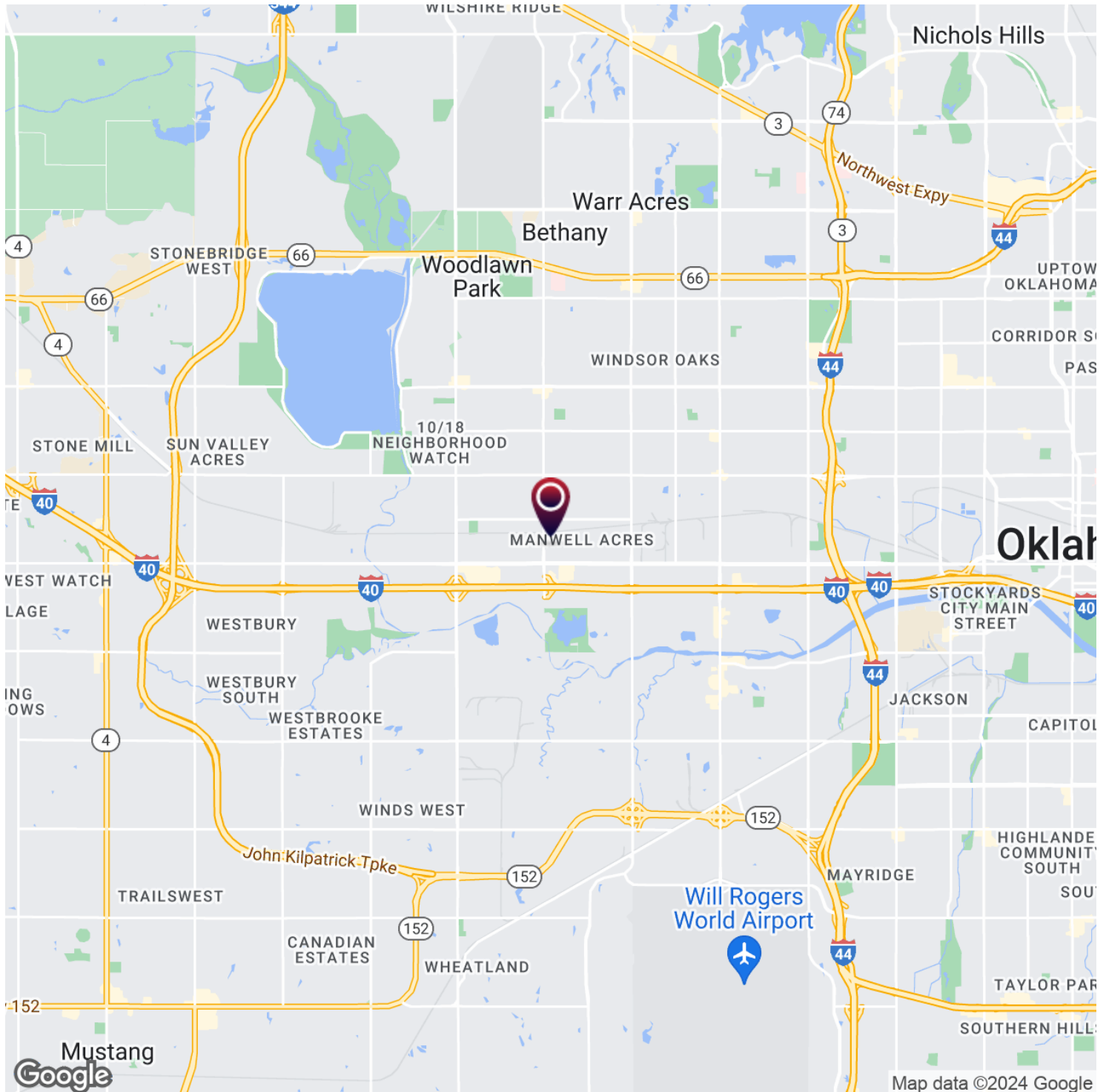


Adept Commercial Real Estate, LLC  
1 NE 2nd Street, Suite 101  
Oklahoma City, OK 73104

Ryan Gilliland  
405.249.7407  
ryan@adeptcre.com

# ROCKWELL CREEK INDUSTRIAL PARK

20 N. Rockwell Avenue, Oklahoma City, OK 73127



Adept Commercial Real Estate, LLC  
1 NE 2nd Street, Suite 101  
Oklahoma City, OK 73104

Ryan Gilliland  
405.249.7407  
ryan@adeptcre.com

# ROCKWELL CREEK INDUSTRIAL PARK

20 N. Rockwell Avenue, Oklahoma City, OK 73127

