

6,700+/- OFFICE WITH 24 COVERED PARKING SPACES | MIXED-USE BUILDING FOR SALE

560 S. MCDONOUGH ST.
MONTGOMERY, AL 36104



Hodges

Commercial Real Estate



OFFERING SUMMARY

Sale Price:	\$399,000
Building Size:	6700 +/- SF
Available SF:	6,700 +/- SF
Lot Size:	0.31 Acres
Price / SF:	\$50.42
Year Built:	1976
Zoning:	T4-R

PROPERTY OVERVIEW

560 S. McDonough ST. is a 6,700 +/- SF mixed-use building, zoned TR4 situated on a 0.31 acre lot. This property features 4 separate office suites. This building also features a covered parking area with a total of 24 parking spaces. High Traffic Counts within the area, I-85 (101,414) and (9,112) on East South St. This property is located in a Qualified Opportunity Zone and has 103' of road frontage on S. McDonough St. For more information or to schedule your tour contact Ed Fleming at 334-652-2121.

PROPERTY HIGHLIGHTS

- High Traffic Data
- 4 Separate Office Suites
- 103' of Road Frontage
- 24 Covered Parking Spaces
- Qualified Opportunity Zone

DEMOGRAPHICS

	1 MILE	5 MILES	10 MILES
Total Households	3,586	51,044	101,091
Total Population	7,242	106,177	216,740
Average HH Income	\$35,497	\$48,749	\$58,546

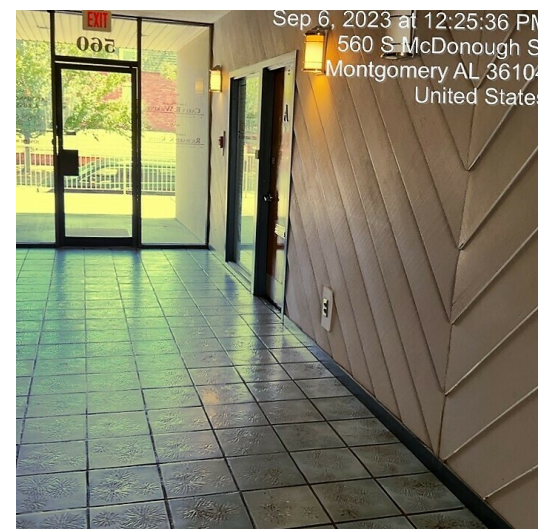
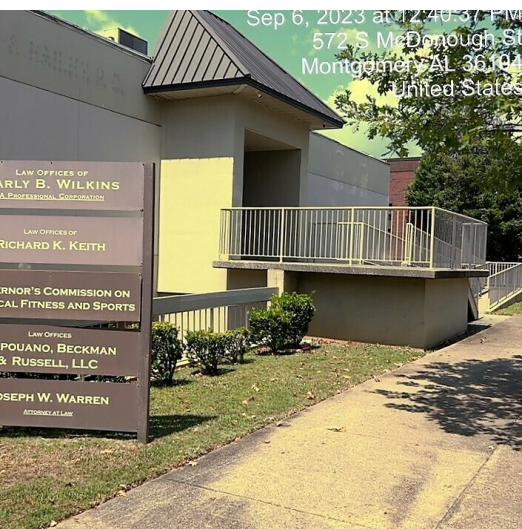
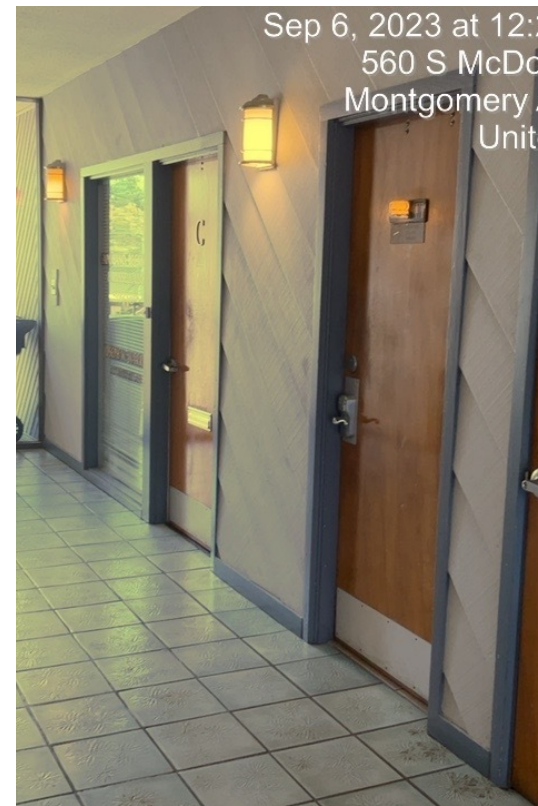
ED FLEMING
defleming7@gmail.com
334.652.2121

**THE RIGHT PLACE.
THE RIGHT SPACE.**

*All information is from sources deemed reliable, but no warranty is made as to the accuracy thereof and same is submitted subject to errors, omissions, change of price, or other conditions, such as prior sales or withdrawal without notice by Hodges Commercial Real Estate, Inc. or the Owner.

6,700+/- OFFICE WITH 24 COVERED PARKING SPACES | MIXED-USE BUILDING FOR SALE

PHOTOS



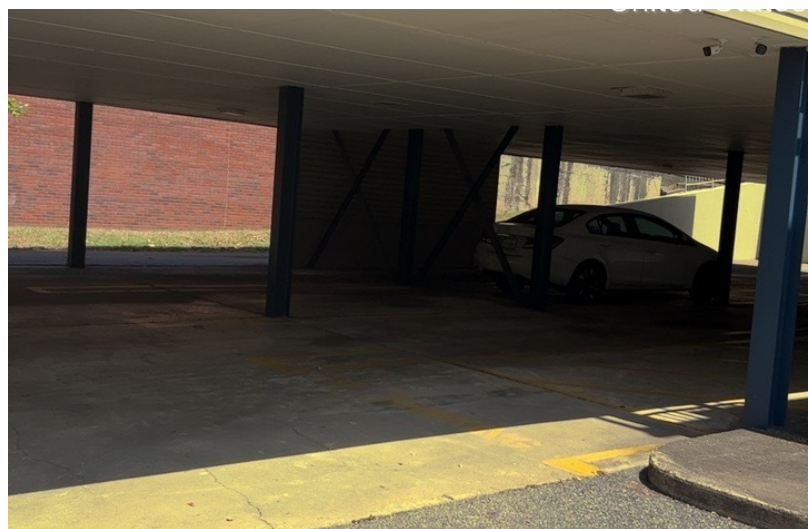
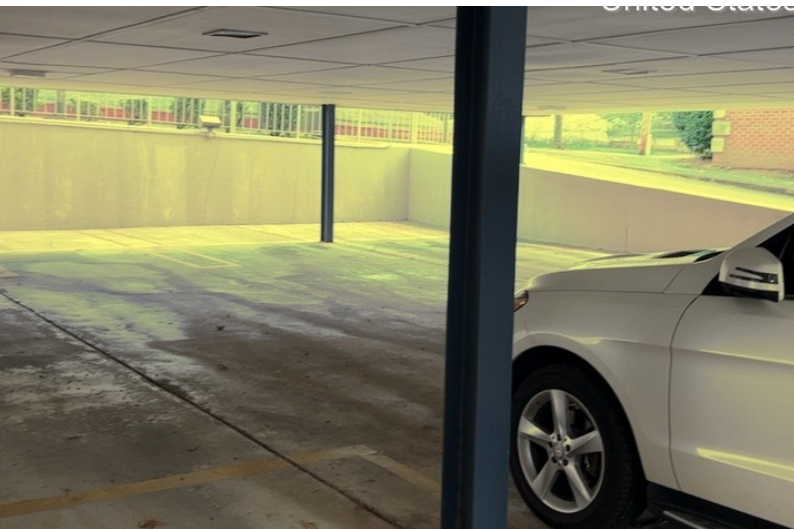
ED FLEMING
defleming7@gmail.com
334.652.2121

**THE RIGHT PLACE.
THE RIGHT SPACE.**

*All information is from sources deemed reliable, but no warranty is made as to the accuracy thereof and same is submitted subject to errors, omissions, change of price, or other conditions, such as prior sales or withdrawal without notice by Hodges Commercial Real Estate, Inc. or the Owner.

6,700+/- OFFICE WITH 24 COVERED PARKING SPACES | MIXED-USE BUILDING FOR SALE

24 COVERED PARKING SPACES



ED FLEMING
defleming7@gmail.com
334.652.2121

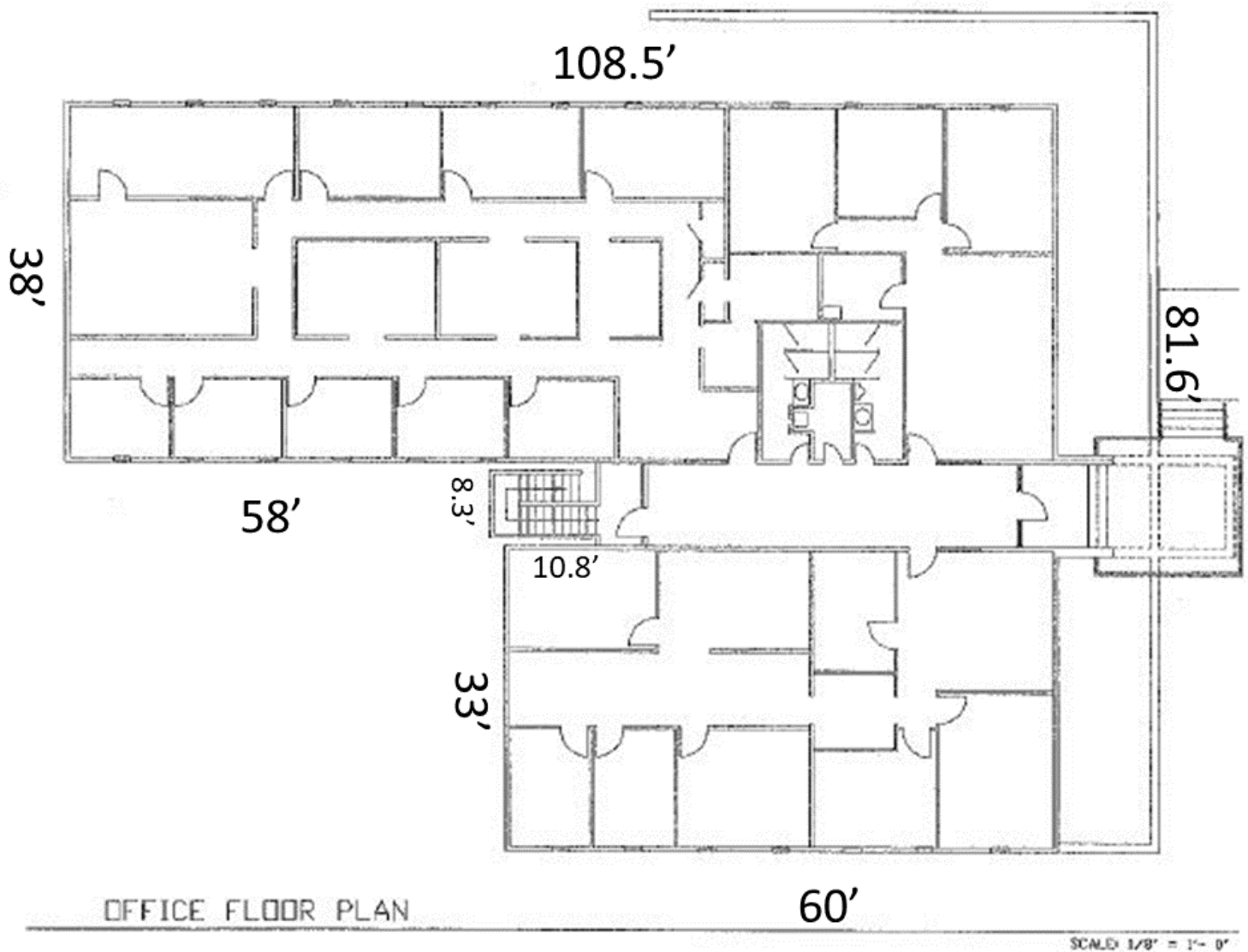
**THE RIGHT PLACE.
THE RIGHT SPACE.**

*All information is from sources deemed reliable, but no warranty is made as to the accuracy thereof and same is submitted subject to errors, omissions, change of price, or other conditions, such as prior sales or withdrawal without notice by Hodges Commercial Real Estate, Inc. or the Owner.

FLOORPLANS



Hodges
Commercial Real Estate



6,700 +/- SF

ED FLEMING
defleming7@gmail.com
334.652.2121

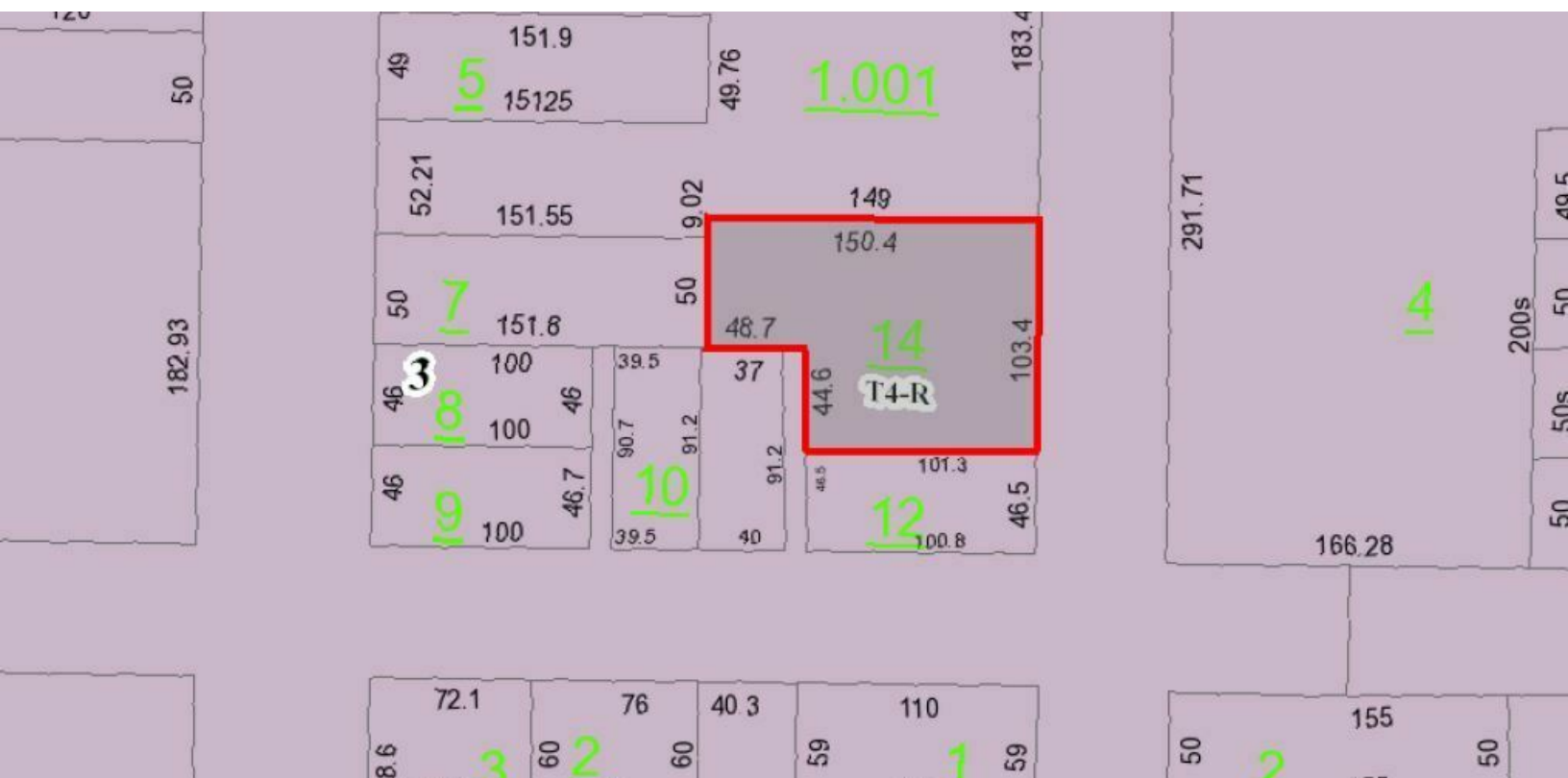
**THE RIGHT PLACE.
THE RIGHT SPACE.**

ZONING



Hodges

Commercial Real Estate



**THE RIGHT PLACE.
THE RIGHT SPACE.**

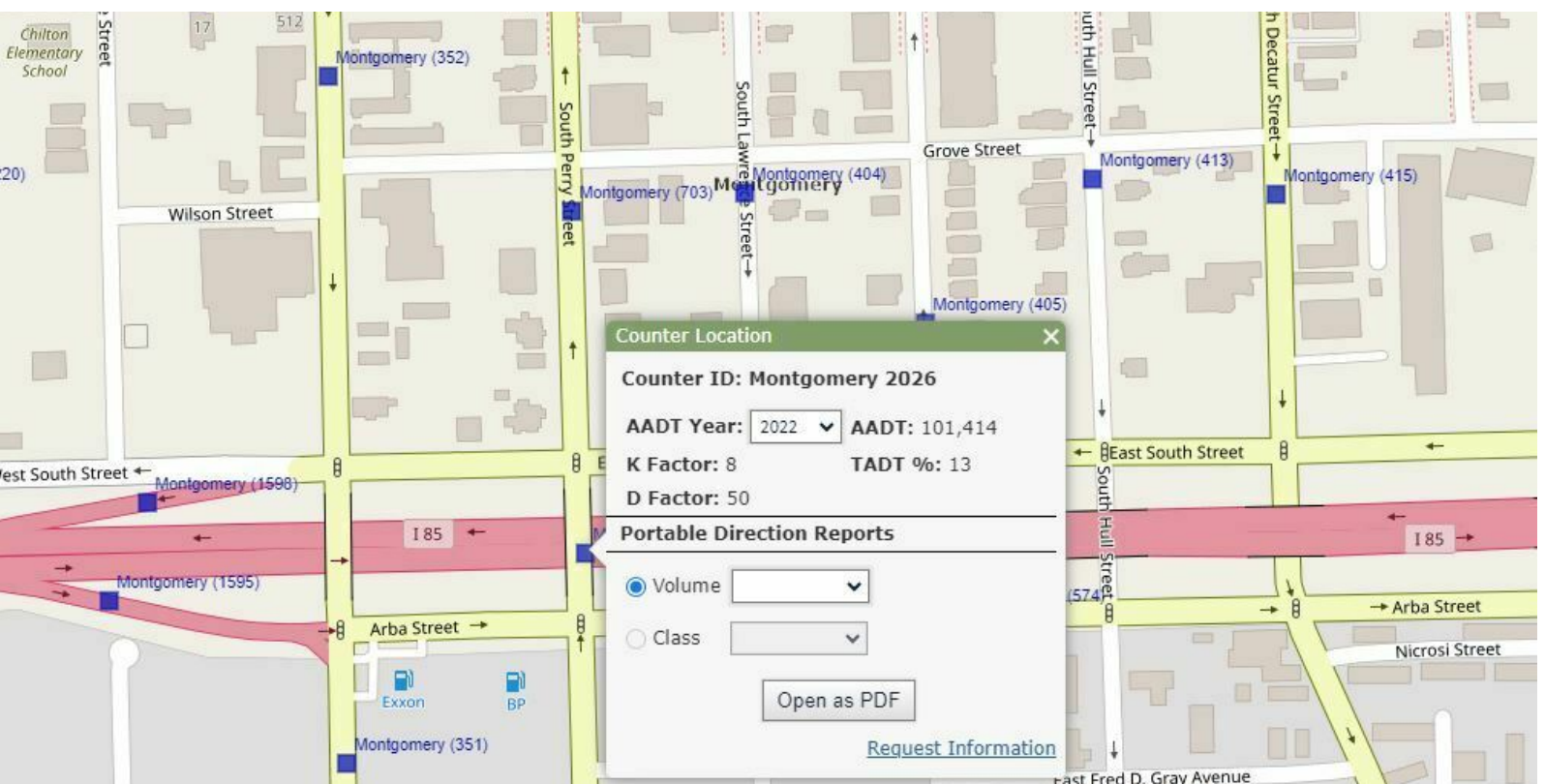
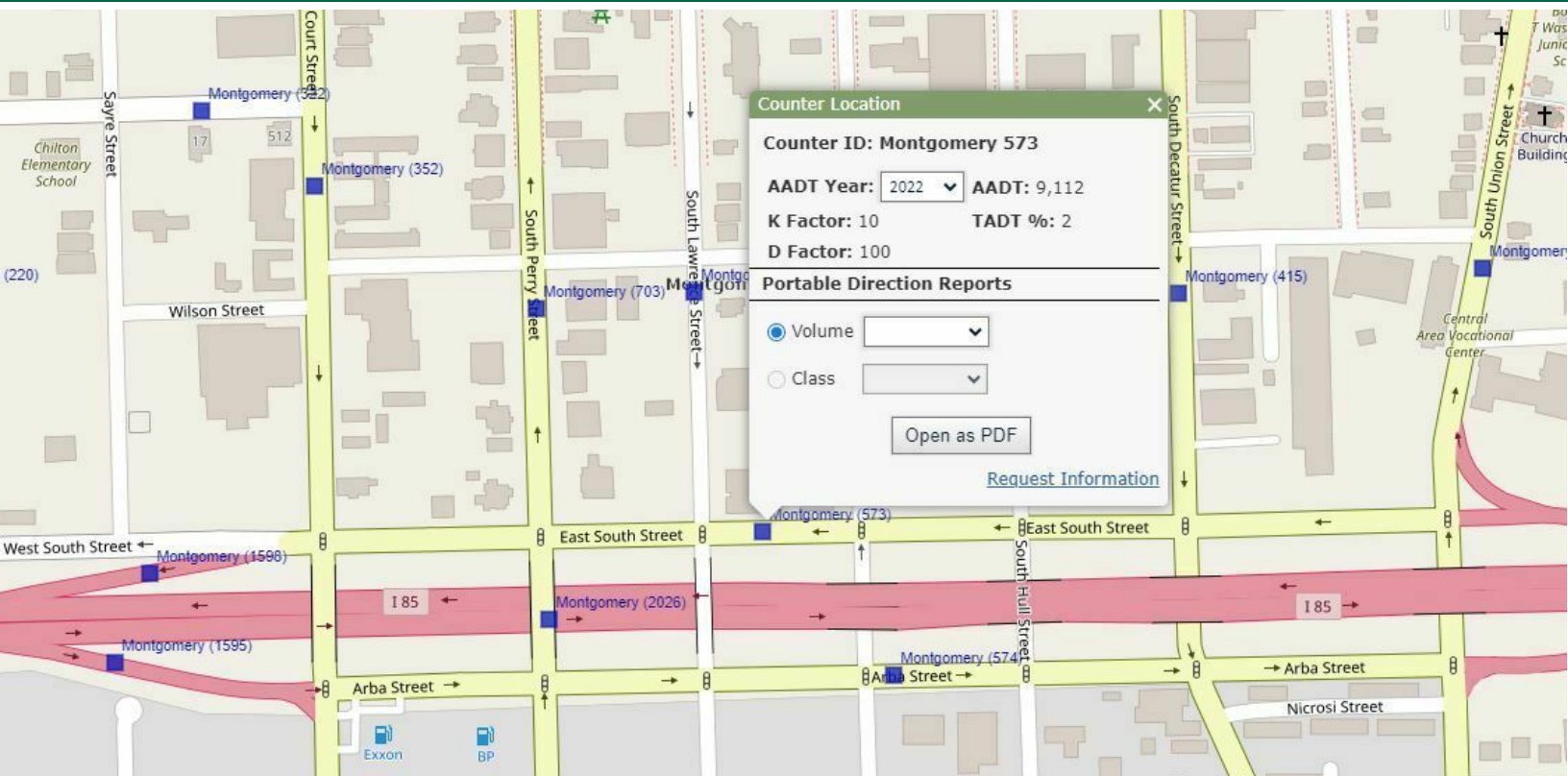
*All information is from sources deemed reliable, but no warranty is made as to the accuracy thereof and same is submitted subject to errors, omissions, change of price, or other conditions, such as prior sales or withdrawal without notice by Hodges Commercial Real Estate, Inc. or the Owner.

6,700+/- OFFICE WITH 24 COVERED PARKING SPACES | MIXED-USE BUILDING FOR SALE

TRAFFIC DATA



Hodges
Commercial Real Estate



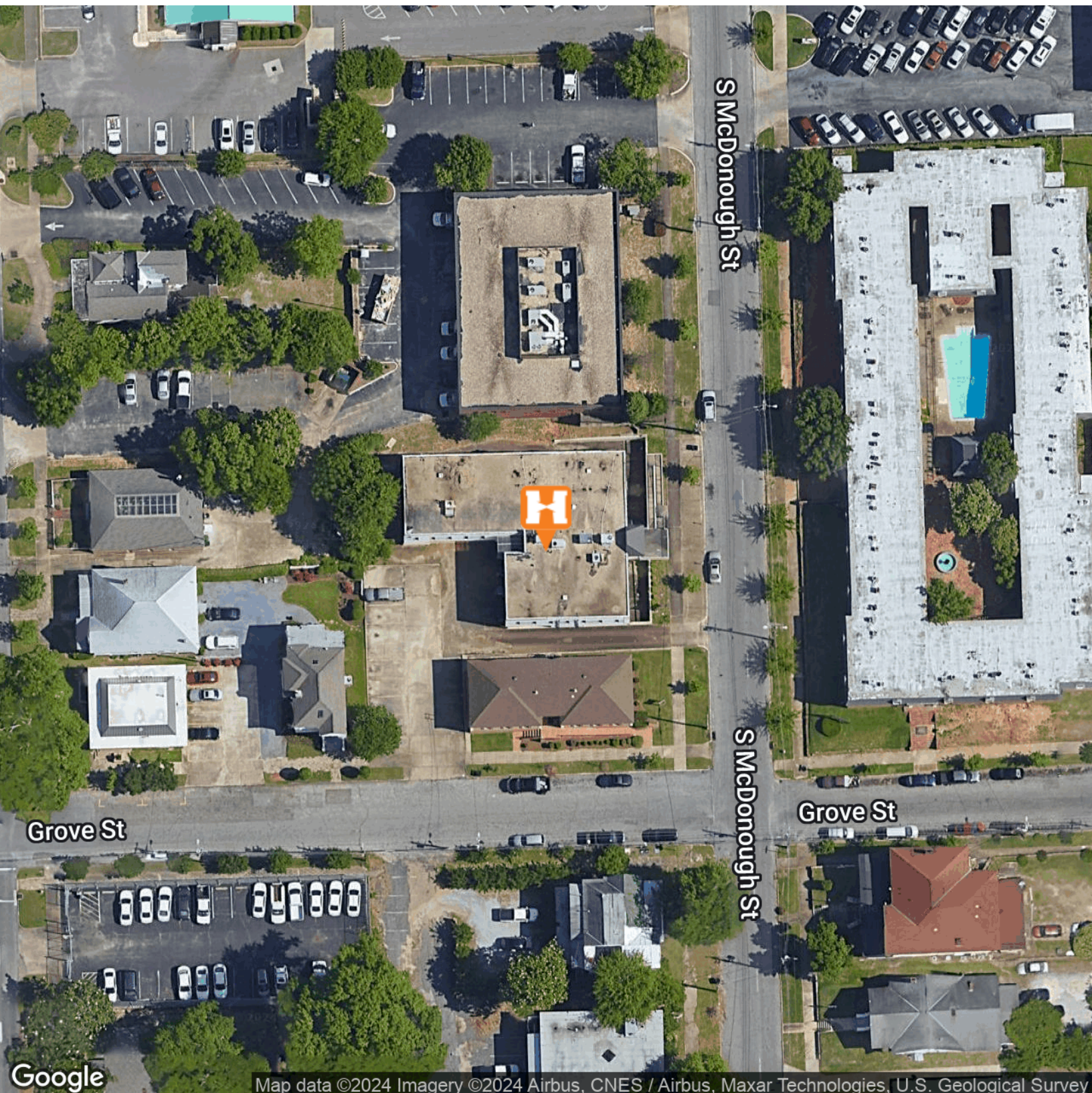
ED FLEMING
defleming7@gmail.com
334.652.2121

**THE RIGHT PLACE.
THE RIGHT SPACE.**

*All information is from sources deemed reliable, but no warranty is made as to the accuracy thereof and same is submitted subject to errors, omissions, change of price, or other conditions, such as prior sales or withdrawal without notice by Hodges Commercial Real Estate, Inc. or the Owner.

6,700+/- OFFICE WITH 24 COVERED PARKING SPACES | MIXED-USE BUILDING FOR SALE

AERIAL MAP



Map data ©2024 Imagery ©2024 Airbus, CNES / Airbus, Maxar Technologies, U.S. Geological Survey

ED FLEMING
defleming7@gmail.com
334.652.2121

**THE RIGHT PLACE.
THE RIGHT SPACE.**

*All information is from sources deemed reliable, but no warranty is made as to the accuracy thereof and same is submitted subject to errors, omissions, change of price, or other conditions, such as prior sales or withdrawal without notice by Hodges Commercial Real Estate, Inc. or the Owner.

6,700+/- OFFICE WITH 24 COVERED PARKING SPACES | MIXED-USE BUILDING FOR SALE

LOCATION MAP



ED FLEMING
defleming7@gmail.com
334.652.2121

**THE RIGHT PLACE.
THE RIGHT SPACE.**

*All information is from sources deemed reliable, but no warranty is made as to the accuracy thereof and same is submitted subject to errors, omissions, change of price, or other conditions, such as prior sales or withdrawal without notice by Hodges Commercial Real Estate, Inc. or the Owner.