

5815 CARMICHAEL ROAD

5815 CARMICHAEL ROAD, MONTGOMERY, AL 36117

Executive Summary



OFFERING SUMMARY

Available SF: Fully Leased

Lease Rate: Negotiable

Lot Size: 1.34 Acres

Building Size: 7,632

Zoning: B-3 (Highway Commercial)

PROPERTY HIGHLIGHTS

- Highly visible location on Carmichael Road
- Quick access to Eastern Boulevard and I-85
- Large open space in the center with flanking offices
- Ample parking
- ±7.0 miles from Downtown Montgomery
- ±9.2 miles from Maxwell Air Force Base: Serving 25,000 Active Duty, Guard, Reserves, Contractors, and Retirees. The Air For University is attended by 20,000 annually



GENE CODY, CCIM

334.386.2441
gcody@mcrmpm.com

MOORE COMPANY REALTY

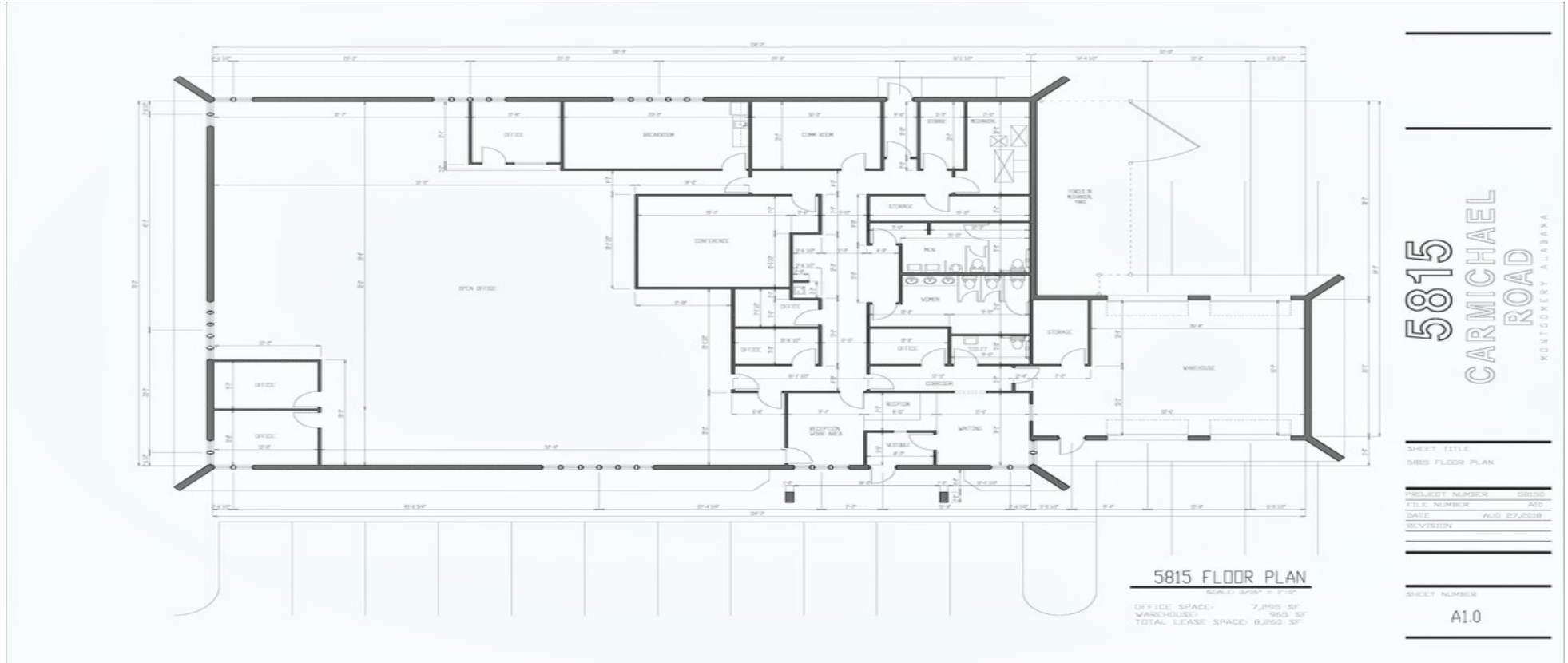
312 Catoma St #200, Montgomery, AL 36104
334.262.1958 | moorecompanyrealty.com



5815 CARMICHAEL ROAD

5815 CARMICHAEL ROAD, MONTGOMERY, AL 36117

Lease Spaces



AVAILABLE SPACES

SUITE	TENANT	SIZE (SF)	LEASE TYPE	LEASE RATE
5815 Carmichael Road	-	7,632 SF	NNN	\$12.00 SF/yr

GENE CODY, CCIM

334.386.2441
gcody@mcrmpm.com

MOORE COMPANY REALTY

312 Catoma St #200, Montgomery, AL 36104
334.262.1958 | moorecompanyrealty.com



5815 CARMICHAEL ROAD

5815 CARMICHAEL ROAD, MONTGOMERY, AL 36117

Demographics

DEMOGRAPHIC SUMMARY

5815 Carmichael Rd, Montgomery, Alabama, 36117

Ring of 5 miles

KEY FACTS

144,456

Population



61,209

Households

36.9

Median Age

\$46,179

Median Disposable Income

EDUCATION

7%

No High School Diploma



25%

High School Graduate



27%

Some College



40%

Bachelor's/Grad/Prof Degree

INCOME



\$55,736

Median Household Income



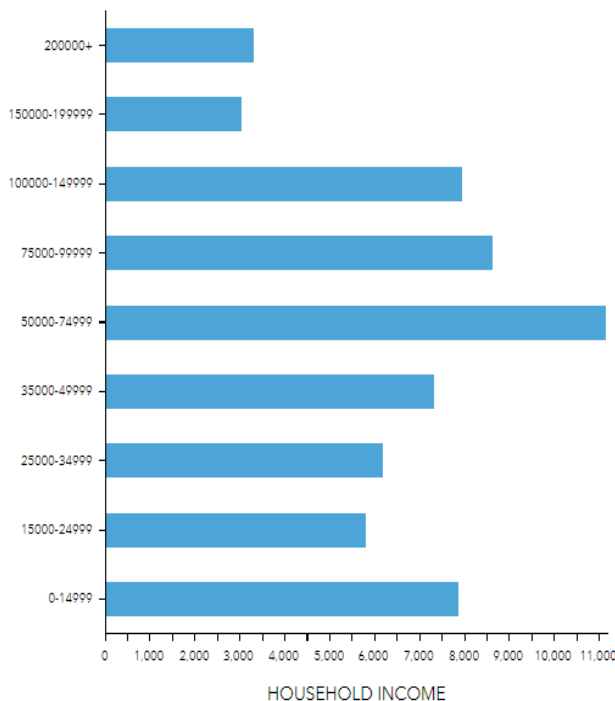
\$34,608

Per Capita Income



\$82,232

Median Net Worth



EMPLOYMENT



White Collar

66%



Blue Collar

21%



Services

16%

4.8%

Unemployment Rate

GENE CODY, CCIM

334.386.2441
gcody@mcrmpm.com

MOORE COMPANY REALTY

312 Catoma St #200, Montgomery, AL 36104
334.262.1958 | moorecompanyrealty.com



5815 CARMICHAEL ROAD, MONTGOMERY, AL 36117