

# FOR LEASE OFFICE BUILDING

**CALIBER HOME LOANS**

**Acuity Eye Group®**

**1403 NORTH TUSTIN AVENUE | SANTA ANA, CALIFORNIA**

## PROPERTY HIGHLIGHTS

- Professional Office Suites
- Lush Courtyard
- Free Surface Parking
- Centrally Located Near the 55, 5 and 22 Freeways
- Proximity to Orange County Global Medical Center
- Food and Retail Amenities Nearby

## PROPERTY OVERVIEW

3-Story Class B Office Building Located in Santa Ana with On-Site Property Management.

### SPACES

### SPACE SIZE

### LEASE RATE

140	3,748 SF	\$1.50 SF/month
160	1,813 SF	\$1.50 SF/month
165	1,041 SF	\$1.50 SF/month
170	3,971 SF	\$1.50 SF/month
300	4,000 SF	\$1.50 SF/month

### EXCLUSIVELY LISTED BY:

#### John Bosko

Executive Vice President  
949.468.2323 Direct  
johnbosko@naicapital.com  
CA DRE #00969975

#### Brian Childs

Executive Managing Director  
949.643.8100 Direct  
bchilds@naicapital.com  
CA DRE #00904960



[www.naicapital.com](http://www.naicapital.com)



**John Bosko**

Executive Vice President  
949.468.2323 Direct  
johnbosko@naicapital.com  
CA DRE #00969975

**Brian Childs**

Executive Managing Director  
949.643.8100 Direct  
bchilds@naicapital.com  
CA DRE #00904960

No warranty, express or implied, is made as to the accuracy of the information contained herein. This information is submitted subject to errors, omissions, change of price, rental or other conditions withdrawal without notice, and is subject to any special listing conditions imposed by our principals. Cooperating brokers, buyers, tenants and other parties who receive this document should not rely on it, but should use it as a starting point of analysis, and should independently confirm the accuracy of the information contained herein through a due diligence review of the books, records, files and documents that constitute reliable sources of the information described herein. Logos are for identification purposes only and may be trademarks of their respective companies. NAI Capital Commercial, Inc. CAL DRE Lic. #02130474

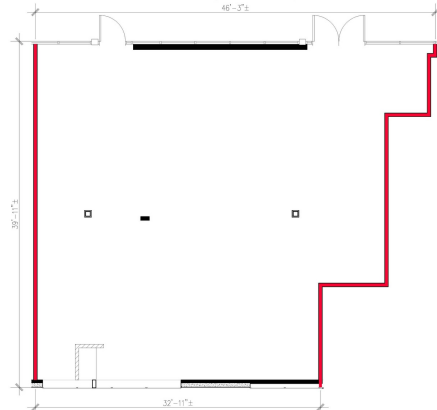
**TUSTIN CORPORATE PLAZA**  
1403 N. TUSTIN AVE, SANTA ANA, CA 92705



**SUITE 140**  
**3,748 RSF**  
SCALE 0 1 2 3 4 5 6 7 8 9 10 11 12



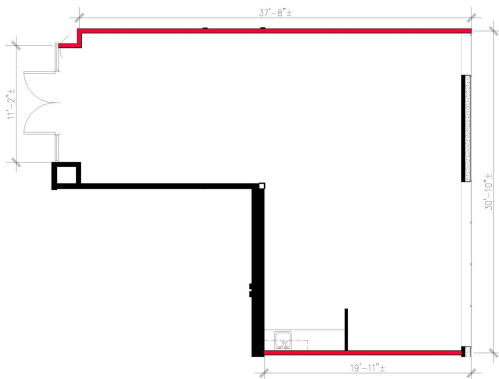
**TUSTIN CORPORATE PLAZA**  
1403 N. TUSTIN AVE, SANTA ANA, CA 92705



**SUITE 160**  
**1,813 RSF**  
SCALE 0 1 2 3 4 5 6 7 8 9 10 11 12



**TUSTIN CORPORATE PLAZA**  
1403 N. TUSTIN AVE, SANTA ANA, CA 92705



**SUITE 165 APPROX.**  
**1,041 RSF**  
SCALE 0 1 2 3 4 5 6 7 8 9 10 11 12



**TUSTIN CORPORATE PLAZA**  
1403 N. TUSTIN AVE, SANTA ANA, CA 92705



**SUITE 170**  
**3,971 RSF**  
SCALE 0 1 2 3 4 5 6 7 8 9 10 11 12



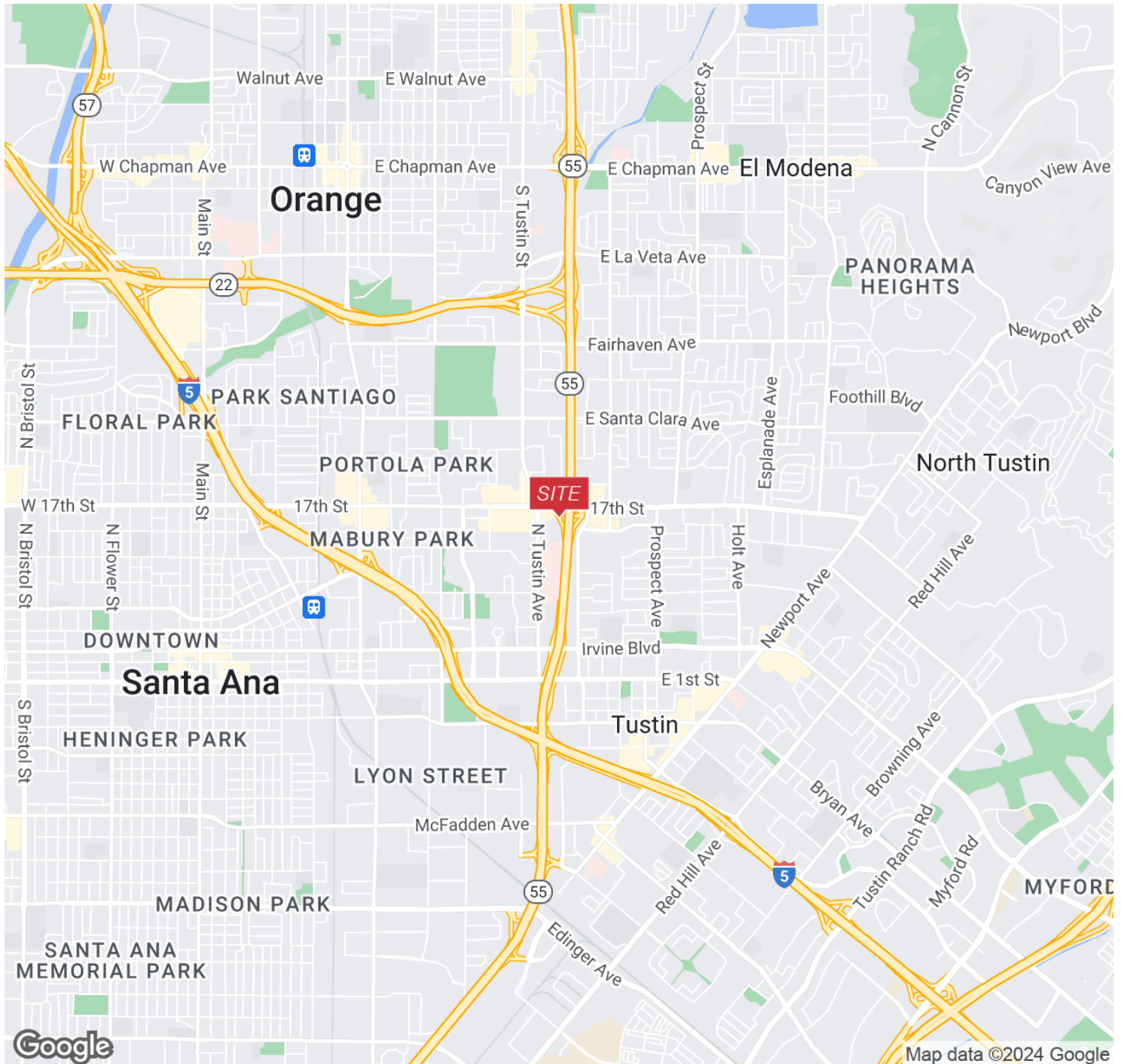
**John Bosko**

Executive Vice President  
949.468.2323 Direct  
johnbosko@naicapital.com  
CA DRE #00969975

**Brian Childs**

Executive Managing Director  
949.643.8100 Direct  
bchilds@naicapital.com  
CA DRE #00904960

No warranty, express or implied, is made as to the accuracy of the information contained herein. This information is submitted subject to errors, omissions, change of price, rental or other conditions withdrawal without notice, and is subject to any special listing conditions imposed by our principals. Cooperating brokers, buyers, tenants and other parties who receive this document should not rely on it, but should use it as a starting point of analysis, and should independently confirm the accuracy of the information contained herein through a due diligence review of the books, records, files and documents that constitute reliable sources of the information described herein. Logos are for identification purposes only and may be trademarks of their respective companies. NAI Capital Commercial, Inc. CAL DRE Lic. #02130474



## John Bosko

Executive Vice President  
949.468.2323 Direct  
johnbosko@naicapital.com  
CA DRE #00969975

## Brian Childs

Executive Managing Director  
949.643.8100 Direct  
bchilds@naicapital.com  
CA DRE #00904960

No warranty, express or implied, is made as to the accuracy of the information contained herein. This information is submitted subject to errors, omissions, change of price, rental or other conditions without withdrawal without notice and is subject to any special listing conditions imposed by our principals. Cooperating brokers, buyers, tenants and other parties who receive this document should not rely on it, but should use it as a starting point of analysis, and should independently confirm the accuracy of the information contained herein through a due diligence review of the books, records, files and documents that constitute reliable sources of the information described herein. Logos are for identification purposes only and may be trademarks of their respective companies. NAI Capital Commercial, Inc. CAL DRE Lic. #02130474