



FOR SALE

■ 28 +/- Acres - Fernlea Nurseries

1705 SE Darling St

Stuart, FL 34997

PROPERTY OVERVIEW

Active nursery property. 28 acres with land use and zoning that allows 2 units per acre. Possible future uses include ALF or multi-family. Close to Martin Health System South Hospital. Across the street from Pine Wood Elementary School.

LOCATION OVERVIEW

Property is located on the NE corner of Willoughby Blvd and Darling Street just 1/4 mile north of Martin Memorial Hospital.

OFFERING SUMMARY

Land Size:	28.0 Acres (25+3)
Land Use (25 Acres):	Residential - 2 Units Per Acre - Martin County
Land Use (3 Acres)	Rural Density
Zoning (25 Acres):	RE - 1/2A Martin County
Zoning (3 Acres):	A-1-A
Utilities:	Water/Sewer - Martin County Utilities

SALE PRICE

\$12,900,000.00



DREW POSTON

VICE PRESIDENT/BROKER

Mobile 772.528.6057

dposton@slccommercial.com

772.220.4096 | slccommercial.com



SLC Commercial
Realty & Development



The information contained herein has been obtained from sources believed to be reliable, but no warranty or representation, expressed or implied, is made. All sizes and dimensions are approximate. Any prospective buyer should exercise prudence and verify independently all significant data and property information. This is NOT an offer of sub-agency or co-brokerage.

Additional Photos

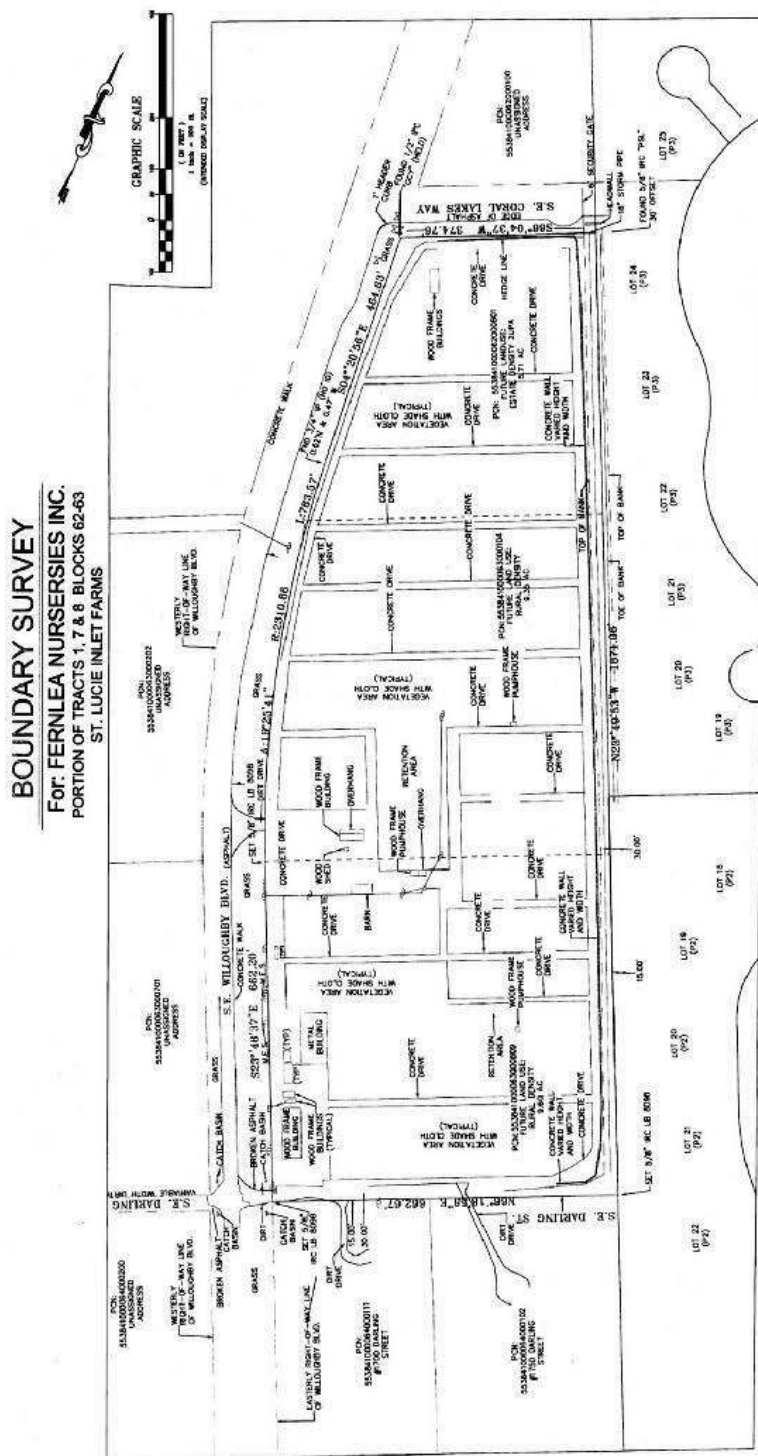
28 +/- ACRES - FERNLEA NURSERIES

FOR SALE



28 +/- ACRES - FERNLEA NURSERIES

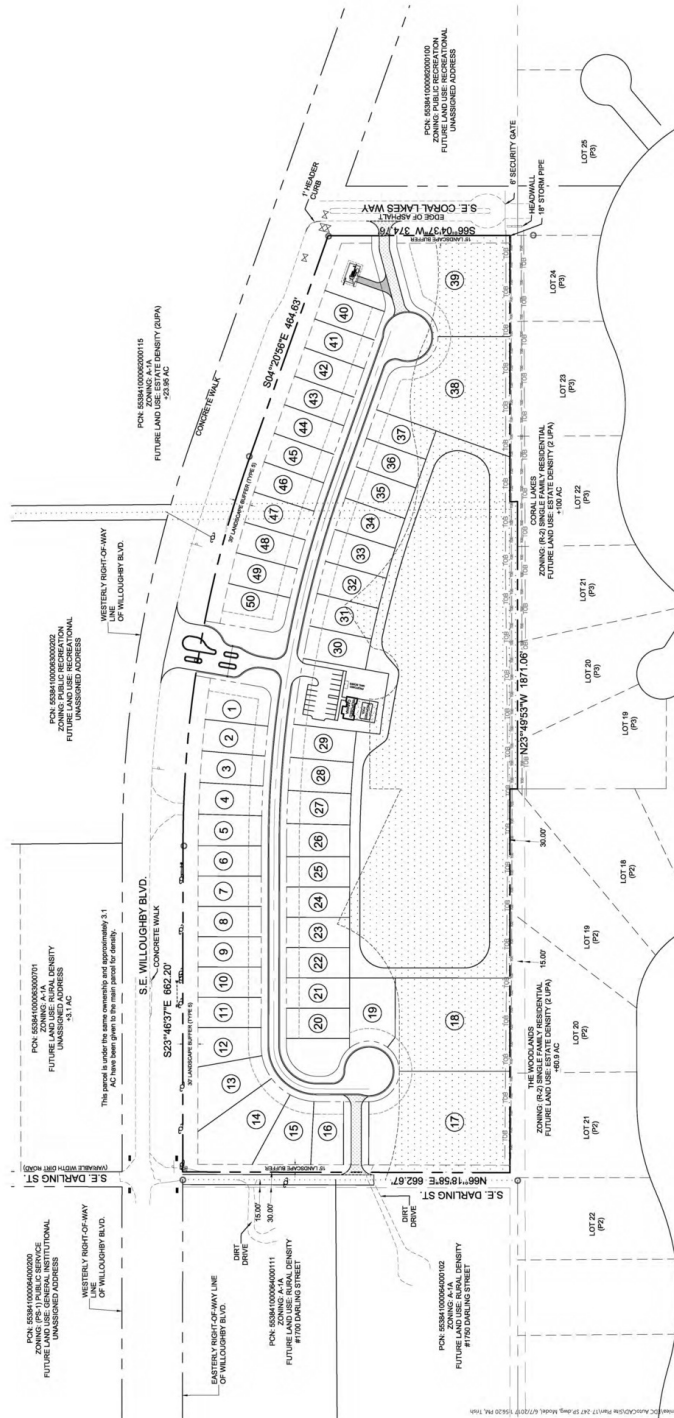
The information contained herein has been obtained from sources believed to be reliable, but no warranty or representation, expressed or implied, is made. All sizes and dimensions are approximate. Any prospective buyer should exercise prudence and verify independently all significant data and property information. This is NOT an offer of sub-agency or co-brokerage.



50 Lot Concepts

28 +/- ACRES - FERNLEA NURSERIES

FOR SALE



Property Details

28 +/- ACRES - FERNLEA NURSERIES

FOR SALE

SALE PRICE

\$12,900,000

Location Information

Building Name 28 +/- Acres - Fernlea Nurseries
Street Address 1705 SE Darling St
City, State, Zip Stuart, FL 34997
County/Township Martin County

Land

Irrigation Yes
Water Yes
Telephone Yes
Cable Yes
Sewer Yes

Zoning / Land Use Details:

Zoning / Land Use Details: RE - 1/2A Martin County
Land Use (25 Acres): Residential - 2 Units Per Acre
- Martin County
Zoning (3 Acres): A-1-A
Land Use (3 Acres): Rural Density
Permitted Use See Below

[CLICK HERE FOR PERMITTED USES](#)

Property Details

Property Type Land
Property Subtype Residential
Lot Size 28 +/- Acres
APN# (25 Acres): 55-38-41-000-063-00080-9;
55-38-41-000-063-00010-4;
55-38-41-000-062-00080-1
APN# (3 Acres): 55-38-41-000-063-00070-1
Corner Property Yes
Waterfront Yes
Utilities & Amenities Water/Sewer - Martin County
Utilities

Parking & Transportation

Street Parking No

Utilities & Amenities

Sewer Yes
Water Yes
Cable Yes
Natural Gas Yes

Location Overview

Property is located on the NE corner of Willoughby Blvd and Darling Street just 1/4mile north of Martin Memorial Hospital.



Retailer Map

28 +/- ACRES - FERNLEA NURSERIES

FOR SALE

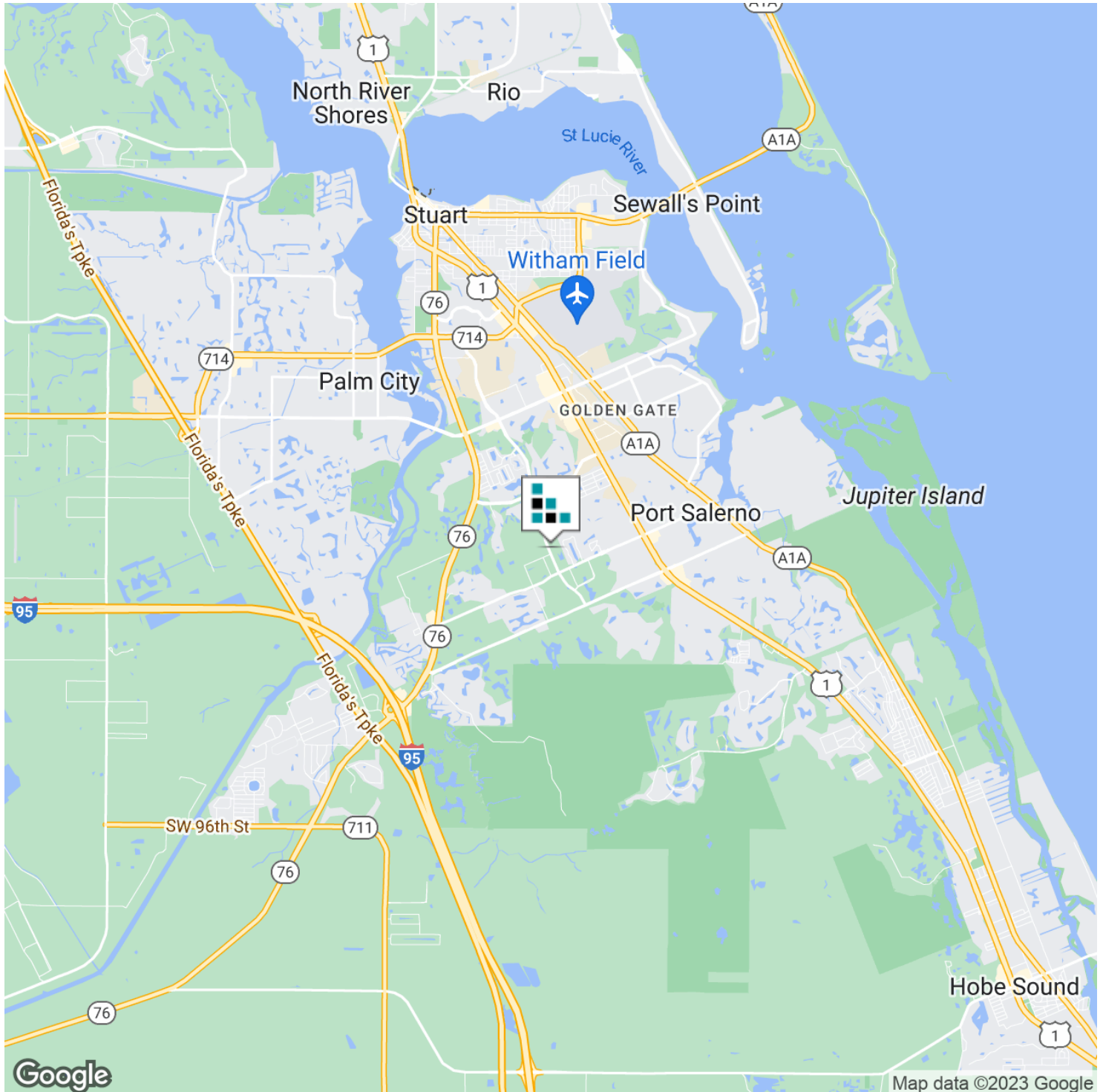


The information contained herein has been obtained from sources believed to be reliable, but no warranty or representation, expressed or implied, is made. All sizes and dimensions are approximate. Any prospective buyer should exercise prudence and verify independently all significant data and property information. This is NOT an offer of sub-agency or co-brokerage.

Location Map

28 +/- ACRES - FERNLEA NURSERIES

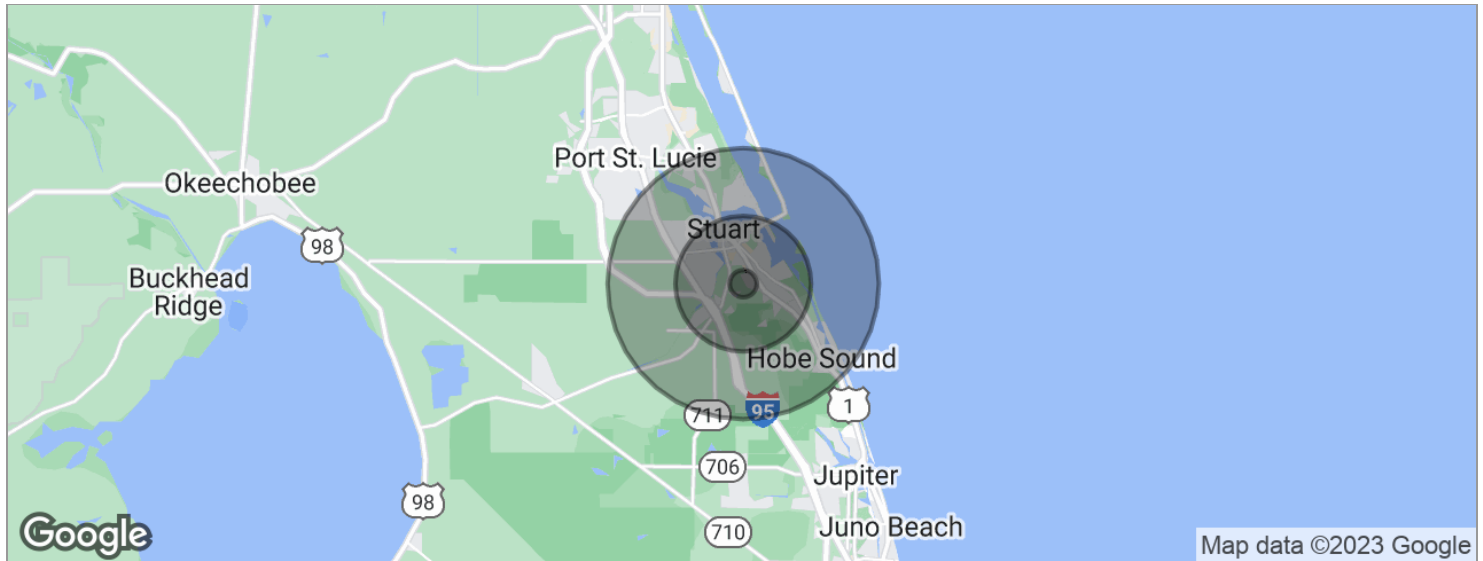
FOR SALE



Demographics Map

28 +/- ACRES - FERNLEA NURSERIES

FOR SALE



POPULATION	1 MILE	5 MILES	10 MILES
Total population	6,514	85,796	165,720
Median age	41.6	52.1	51.4
Median age (Male)	41.3	50.0	49.6
Median age (Female)	42.2	53.2	52.6
HOUSEHOLDS & INCOME	1 MILE	5 MILES	10 MILES
Total households	2,566	44,795	85,474
# of persons per HH	2.5	1.9	1.9
Average HH income	\$67,491	\$78,066	\$79,079
Average house value	\$213,852	\$289,608	\$315,403

* Demographic data derived from 2020 ACS - US Census

Disclaimer

28 +/- ACRES - FERNLEA NURSERIES

FOR SALE

This presentation package has been prepared by the company representing the property for informational purposes only and does not purport to contain all information necessary to reach a purchase decision.

The information herein has been given by the Owner or other sources believed to be reliable, but it has not necessarily been independently verified by the Company representing the property and neither its accuracy nor its completeness is guaranteed.

This information is subject to errors, omissions, changes, prior sale or withdrawal without notice by the Company representing the property and does not constitute a recommendation, endorsement or advice as to the value for the purchase of any property. Each prospective lessee or purchaser is to rely upon his/her own investigation, evaluation and judgment as to the advisability of leasing or purchasing the property.

Furthermore, any financial information and calculations presented in this analysis are believed to be accurate, but are not guaranteed and are intended for the purposes of projection and analysis only. The user of this financial information contained herein should consult a tax specialist concerning his/her particular circumstances before making any investment.

