

Purple Sage St

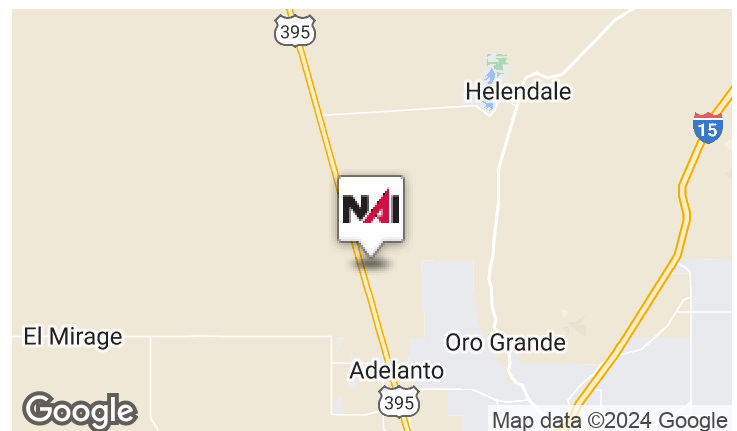
Adelanto, California 92301

Property Highlights

- ASKING: \$55,000
- SIZE: ± 5 Acres
- APN: 0460-313-12
- ZONING: Rural Living (RL-5)

Property Description

- Large Estate Parcel
- Growing Desert Community
- Proximity to Major Development Projects
- Qualified Opportunity Zone



For More Information

Mehdi Mostaedi, ALC

O: 760 780 4210

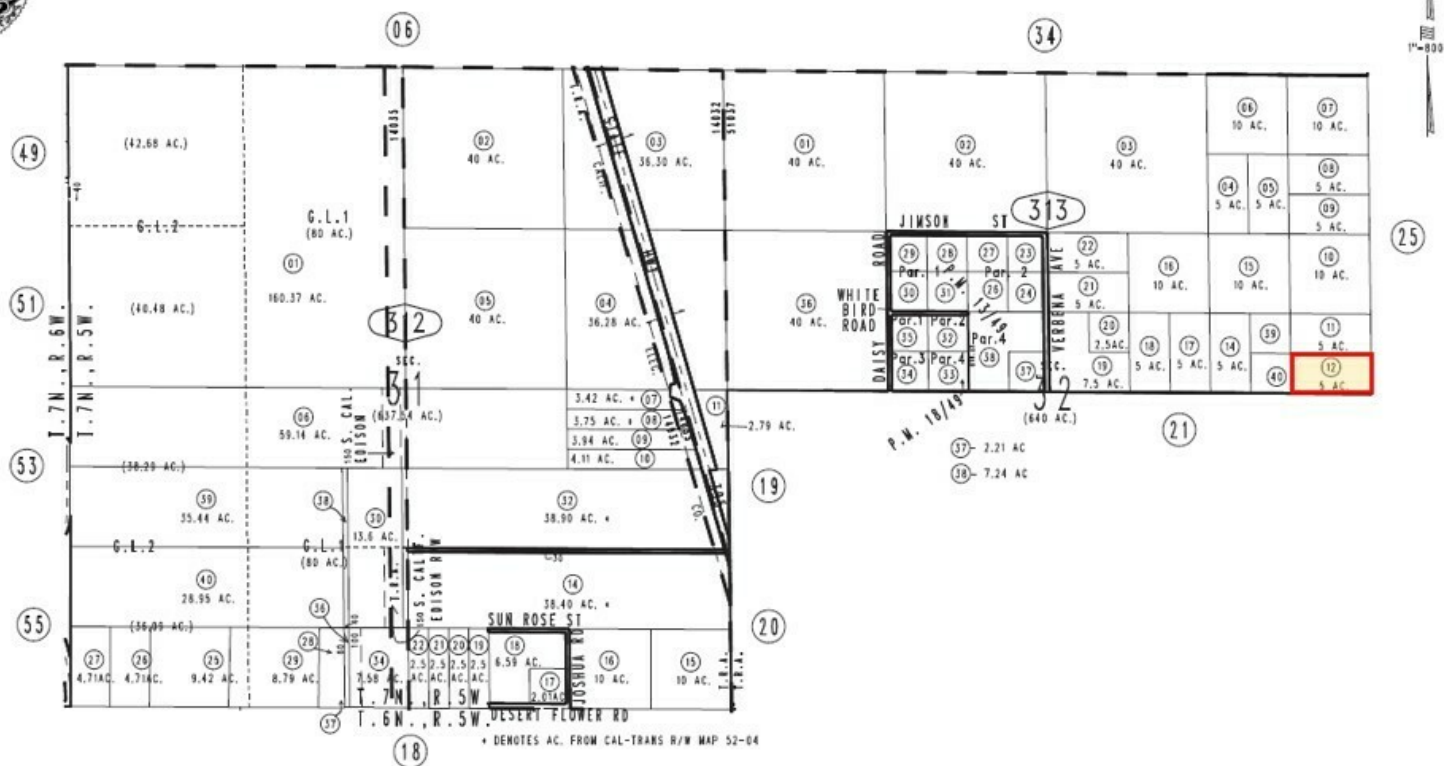
mmostaedi@naicapital.com | CalDRE #01392527

Jonathan Pollak

O: 760 780 4217

jpollak@naicapital.com | CalDRE #02106603

0460-31



Assessor's Map
Book 0460 Page 31
San Bernardino County

REVISED
04/15/17 KC