

For Sale

Retail

16,180 SF



Merchant Village II Center

5210 Schubert Rd
Knoxville, Tennessee 37912

Property Highlights

- Fully Sprinkled
- Tenants are Peyton's Place (10,400 SF), former insurance office (1,900 SF) and WaveMAX (3,880 SF)
- Investment or Owner/User possibilities (up to 12,300 SF can be assembled for an owner/user).
- Excellent parking ratio 6:1000 plus gravel lot leased to neighbor
- 1,200' to I-75

Property Description

3 tenant neighborhood strip center.

OFFERING SUMMARY

Sale Price:	\$2,300,000
Number of Units:	3
Lot Size:	2.19 Acres
Building Size:	16,180 SF
Traffic Count:	21740

DEMOGRAPHICS

	1 MILE	5 MILES	10 MILES
Total Households	3,240	70,729	164,117
Total Population	6,530	152,009	360,017
Average HH Income	\$39,326	\$53,327	\$66,729

Sam Tate, CCIM

Senior Advisor | 865.777.3035

state@koellamoore.com | TN #207699



www.koellamoore.com

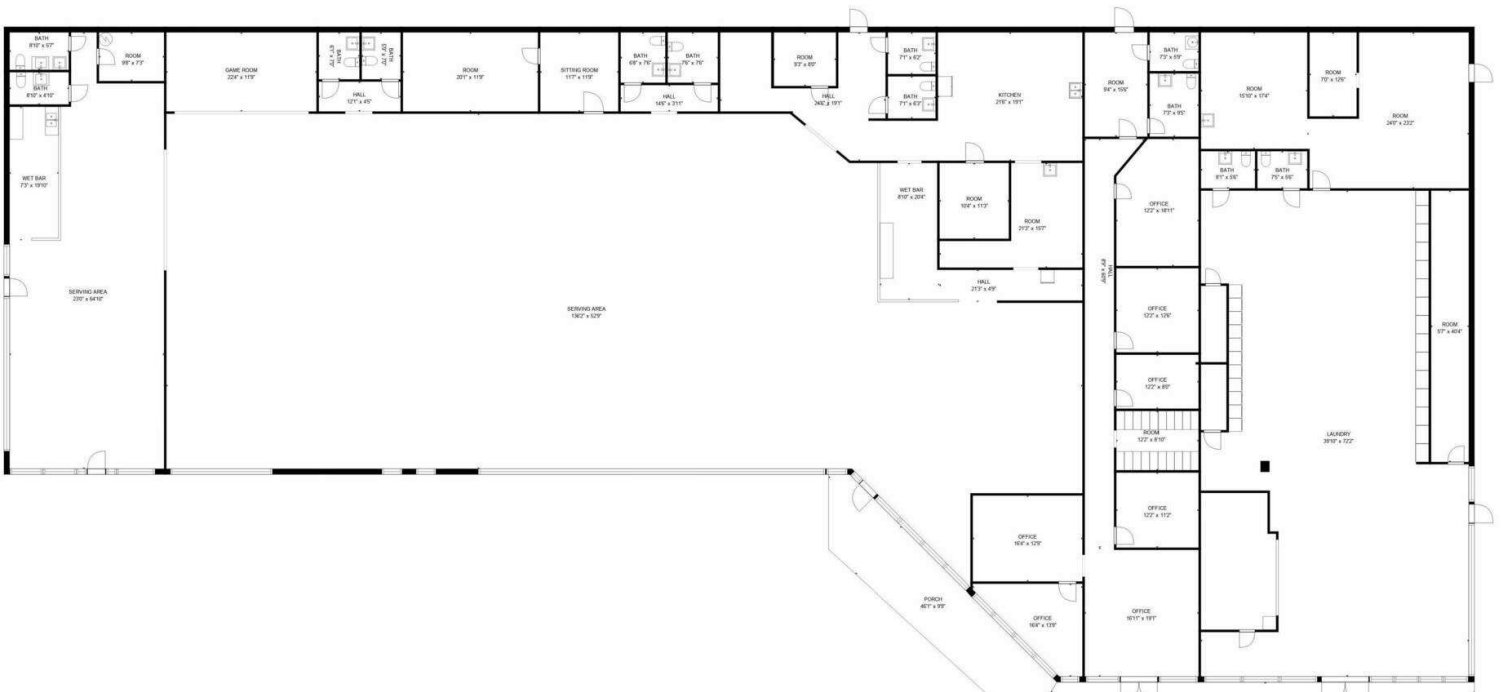
NO WARRANTY OR REPRESENTATION, EXPRESS OR IMPLIED, IS MADE AS TO THE ACCURACY OF THE INFORMATION CONTAINED HEREIN, AND THE SAME IS SUBMITTED SUBJECT TO ERRORS, OMISSIONS, CHANGE OF PRICE, RENTAL OR OTHER CONDITIONS, PRIOR SALE, LEASE OR FINANCING, WITHDRAWAL WITHOUT NOTICE, OR ANY SPECIAL LISTING CONDITIONS IMPOSED BY OUR PRINCIPALS. NO WARRANTIES OR REPRESENTATIONS ARE MADE AS TO THE CONDITION OF THE PROPERTY OR ANY HAZARDS CONTAINED THEREIN. UNLESS THERE IS AN AGREEMENT STIPULATING OTHERWISE, THE AFFILIATE BROKERS OR BROKERS NAMED WITHIN REPRESENT THE OWNER OR LANDLORD.



FOR SALE



RETAIL

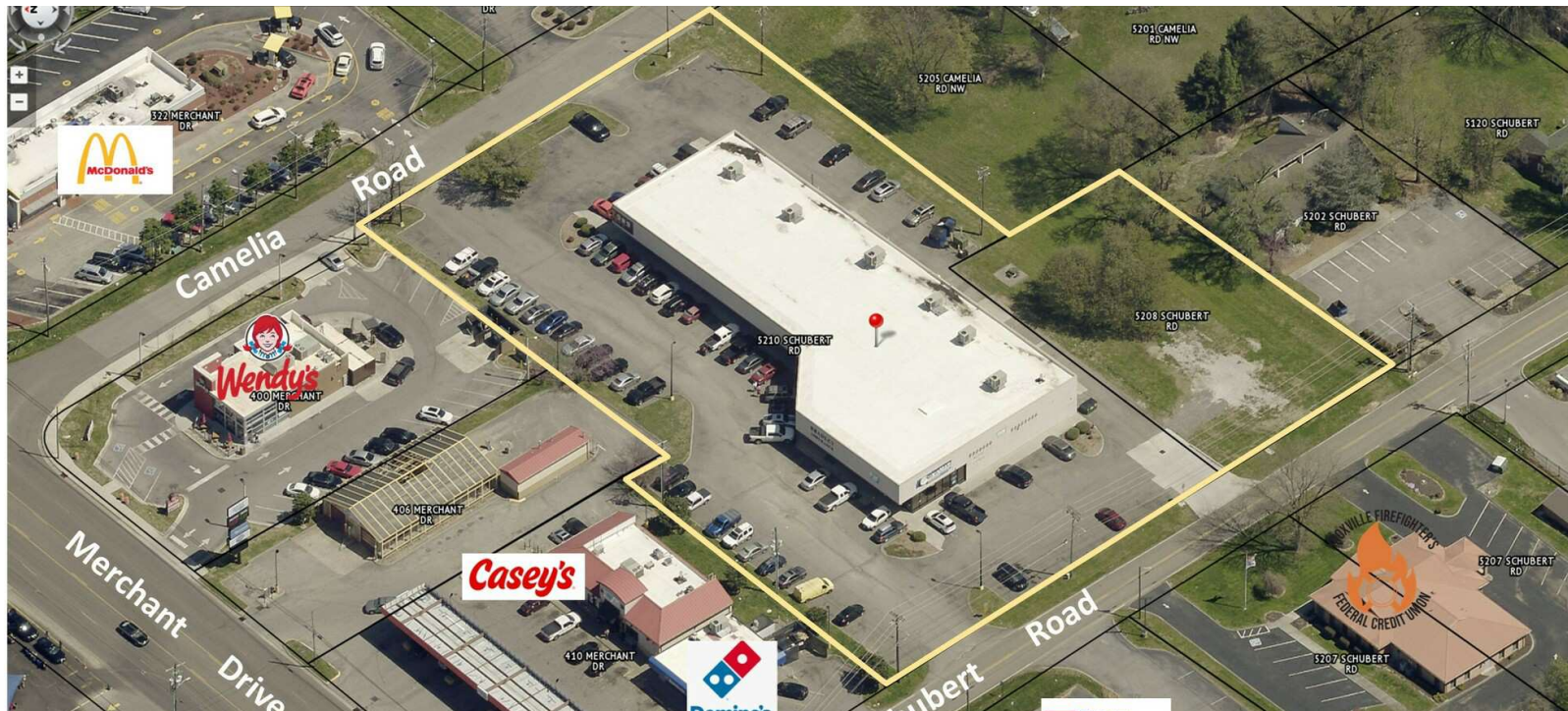


Sam Tate, CCIM
Senior Advisor | 865.777.3035
state@koellamoore.com | TN #207699



www.koellamoore.com

NO WARRANTY OR REPRESENTATION, EXPRESS OR IMPLIED, IS MADE AS TO THE ACCURACY OF THE INFORMATION CONTAINED HEREIN, AND THE SAME IS SUBMITTED SUBJECT TO ERRORS, OMISSIONS, CHANGE OF PRICE, RENTAL OR OTHER CONDITIONS, PRIOR SALE, LEASE OR FINANCING, WITHDRAWAL WITHOUT NOTICE, OR ANY SPECIAL LISTING CONDITIONS IMPOSED BY OUR PRINCIPALS. NO WARRANTIES OR REPRESENTATIONS ARE MADE AS TO THE CONDITION OF THE PROPERTY OR ANY HAZARDS CONTAINED THEREIN. UNLESS THERE IS AN AGREEMENT STIPULATING OTHERWISE, THE AFFILIATE BROKERS OR BROKERS NAMED WITHIN REPRESENT THE OWNER OR LANDLORD.



Sam Tate, CCIM
Senior Advisor | 865.777.3035
state@koellamoore.com | TN #207699

NO WARRANTY OR REPRESENTATION, EXPRESS OR IMPLIED, IS MADE AS TO THE ACCURACY OF THE INFORMATION CONTAINED HEREIN, AND THE SAME IS SUBMITTED SUBJECT TO ERRORS, OMISSIONS, CHANGE OF PRICE, RENTAL OR OTHER CONDITIONS, PRIOR SALE, LEASE OR FINANCING, WITHDRAWAL WITHOUT NOTICE, OR ANY SPECIAL LISTING CONDITIONS IMPOSED BY OUR PRINCIPALS. NO WARRANTIES OR REPRESENTATIONS ARE MADE AS TO THE CONDITION OF THE PROPERTY OR ANY HAZARDS CONTAINED THEREIN. UNLESS THERE IS AN AGREEMENT STIPULATING OTHERWISE, THE AFFILIATE BROKERS OR BROKERS NAMED WITHIN REPRESENT THE OWNER OR LANDLORD.

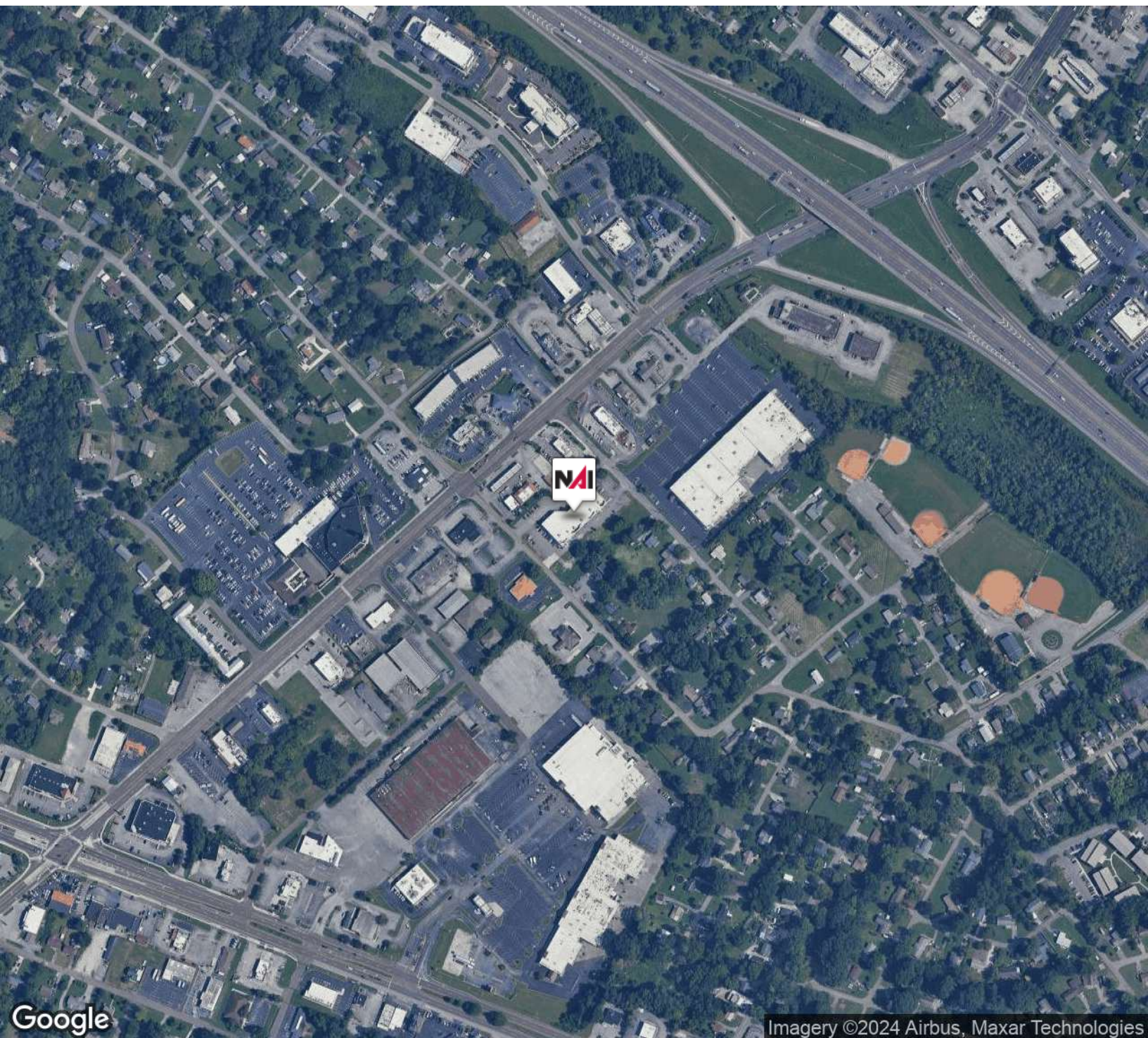




FOR SALE



RETAIL



Sam Tate, CCIM

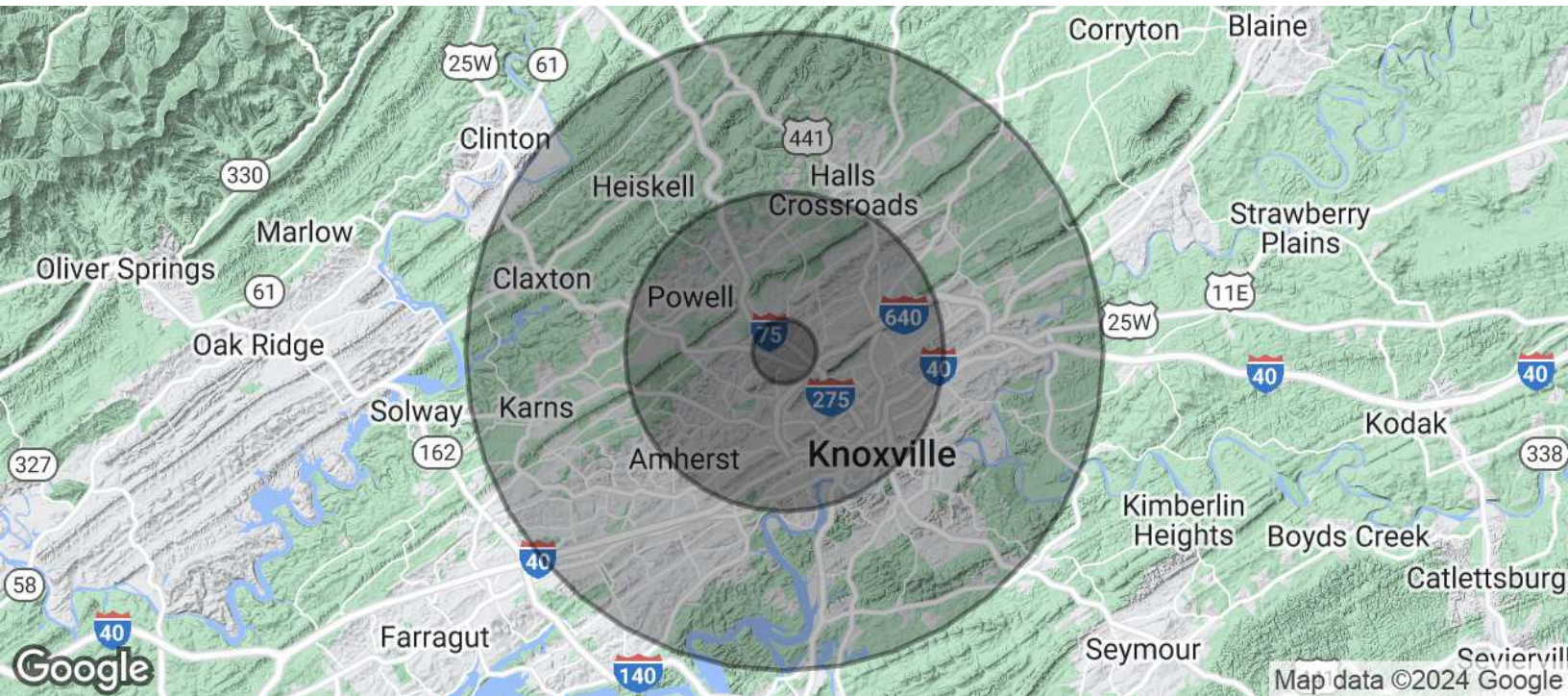
Senior Advisor | 865.777.3035

state@koellamoore.com | TN #207699



www.koellamoore.com

NO WARRANTY OR REPRESENTATION, EXPRESS OR IMPLIED, IS MADE AS TO THE ACCURACY OF THE INFORMATION CONTAINED HEREIN, AND THE SAME IS SUBMITTED SUBJECT TO ERRORS, OMISSIONS, CHANGE OF PRICE, RENTAL OR OTHER CONDITIONS, PRIOR SALE, LEASE OR FINANCING, WITHDRAWAL WITHOUT NOTICE, OR ANY SPECIAL LISTING CONDITIONS IMPOSED BY OUR PRINCIPALS. NO WARRANTIES OR REPRESENTATIONS ARE MADE AS TO THE CONDITION OF THE PROPERTY OR ANY HAZARDS CONTAINED THEREIN. UNLESS THERE IS AN AGREEMENT STIPULATING OTHERWISE, THE AFFILIATE BROKERS OR BROKERS NAMED WITHIN REPRESENT THE OWNER OR LANDLORD.



POPULATION

	1 MILE	5 MILES	10 MILES
Total Population	6,530	152,009	360,017
Average Age	34.4	35.7	37.9
Average Age (Male)	35.6	34.4	36.5
Average Age (Female)	34.9	37.0	39.3

HOUSEHOLDS & INCOME

	1 MILE	5 MILES	10 MILES
Total Households	3,240	70,729	164,117
# of Persons per HH	2.0	2.1	2.2
Average HH Income	\$39,326	\$53,327	\$66,729
Average House Value	\$106,089	\$140,823	\$178,779

2020 American Community Survey (ACS)

Sam Tate, CCIM

Senior Advisor | 865.777.3035

state@koellamoore.com | TN #207699

