

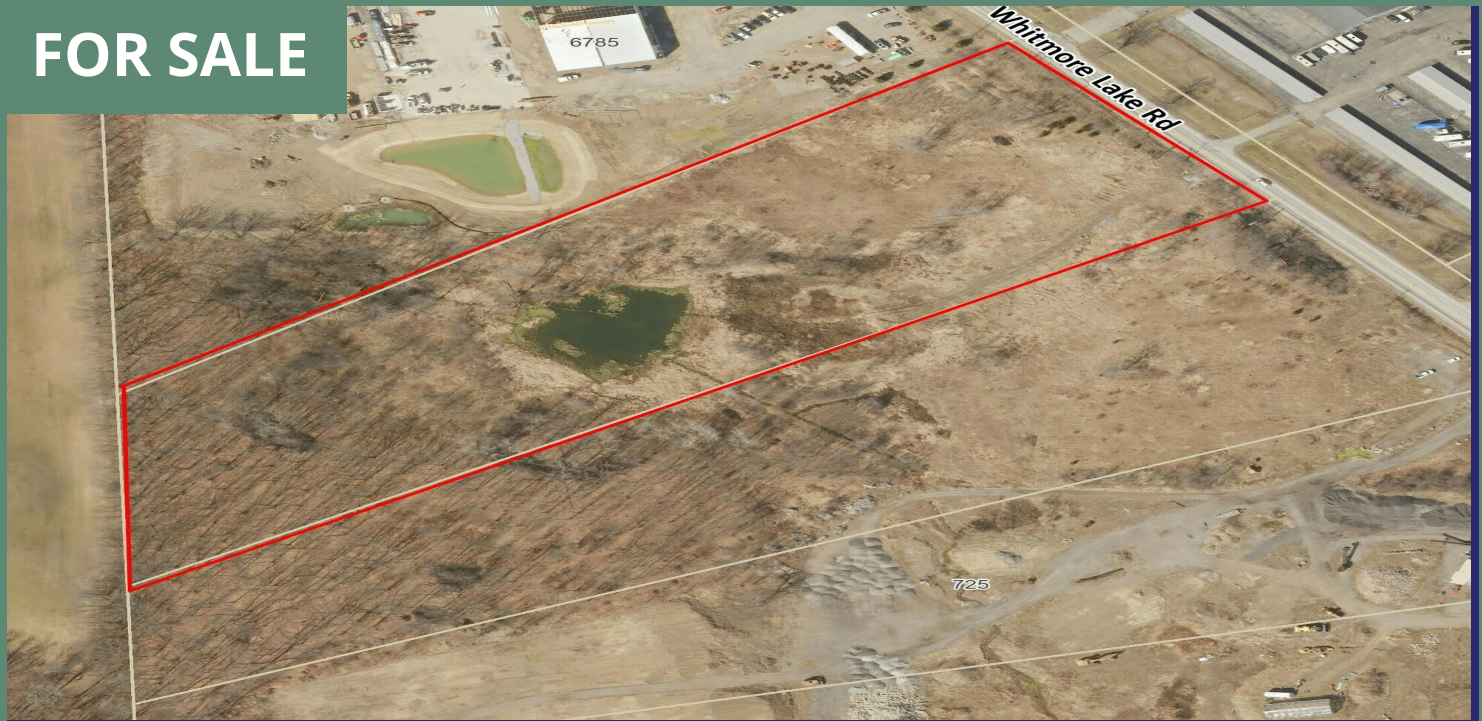
Industrial Vacant Land for Sale in Northfield Twp.

WHITMORE LAKE ROAD, WHITMORE LAKE, MI 48189



Swisher
COMMERCIAL

FOR SALE



SUMMARY

Sale Price:	\$750,000
Price / Acre:	\$74,925
Lot Size:	10.01 Acres
Zoning:	LI in WLNT overlay district
2023 Taxes	\$7,622

PROPERTY HIGHLIGHTS

- Industrial vacant land in Northfield Twp.
- Zoned LI (Limited Industrial)
- Located in WLNT overlay district
- Possible uses include industrial, office, retail, animal clinic and indoor recreation
- Gas, electricity and sewer available
- Additional 10 +/- acres available to the south

***Building
relationships.***

208 East Washington Street Ann Arbor, MI 48104

734.663.0501

Charlie Koenn

734.926.0230

CKOENN@SWISHERCOMMERCIAL.COM

Bart Wise

734.358.0354

BARTW@SWISHERCOMMERCIAL.COM

SWISHERCOMMERCIAL.COM

Industrial Vacant Land for Sale in Northfield Twp.

WHITMORE LAKE ROAD, WHITMORE LAKE, MI 48189



***Building
relationships.***

208 East Washington Street Ann Arbor, MI 48104

734.663.0501

Charlie Koenn
Bart Wise

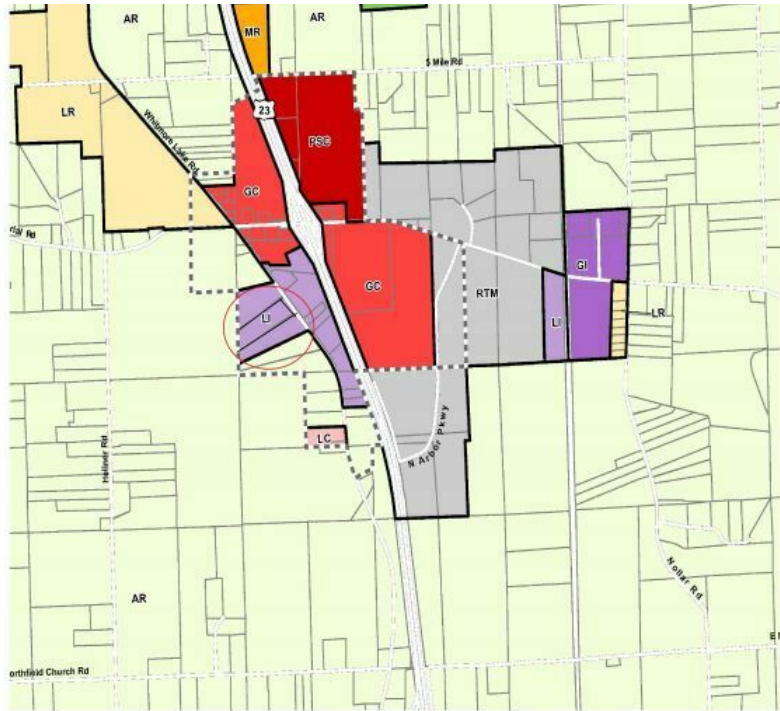
734.926.0230
734.358.0354

CKOENN@SWISHERCOMMERCIAL.COM
BARTW@SWISHERCOMMERCIAL.COM

SWISHERCOMMERCIAL.COM

Industrial Vacant Land for Sale in Northfield Twp.

WHITMORE LAKE ROAD, WHITMORE LAKE, MI 48189



Zoning Map

Northfield Township
Washtenaw County, Michigan

January 13, 2021

LEGEND

- AR - Agriculture
- LR - Low-Density Residential
- MR - Multiple-Family Residential
- MHP - Mobile Home Park
- SR1 - Single-Family Residential
- SR2 - Single-Family Residential
- RO - Residential/Office
- LC - Local Commercial
- GC - General Commercial
- LI - Limited Industrial
- GI - General Industrial
- RTM - Research/ Technology/ Manufacturing
- PUD - Planned Unit Development
- PSC - Planned Shopping Center
- RC - Recreation Conservation
- WLD-DD - Whitmore Lake Downtown
- WLD-NV - Whitmore Lake North Village
- WLD-W - Whitmore Lake Waterfront
- WLNT - Whitmore Lake/North Territorial Overlay District
- WLHL - Whitmore Lake/Horseshoe Lake Overlay District



**Building
relationships.**

208 East Washington Street Ann Arbor, MI 48104

734.663.0501

Charlie Koenn

734.926.0230

CKOENN@SWISHERCOMMERCIAL.COM

Bart Wise

734.358.0354

BARTW@SWISHERCOMMERCIAL.COM

SWISHERCOMMERCIAL.COM

Industrial Vacant Land for Sale in Northfield Twp.

WHITMORE LAKE ROAD, WHITMORE LAKE, MI 48189



**Building
relationships.**

208 East Washington Street Ann Arbor, MI 48104

734.663.0501

Charlie Koenn

734.926.0230

CKOENN@SWISHERCOMMERCIAL.COM

Bart Wise

734.358.0354

BARTW@SWISHERCOMMERCIAL.COM

SWISHERCOMMERCIAL.COM