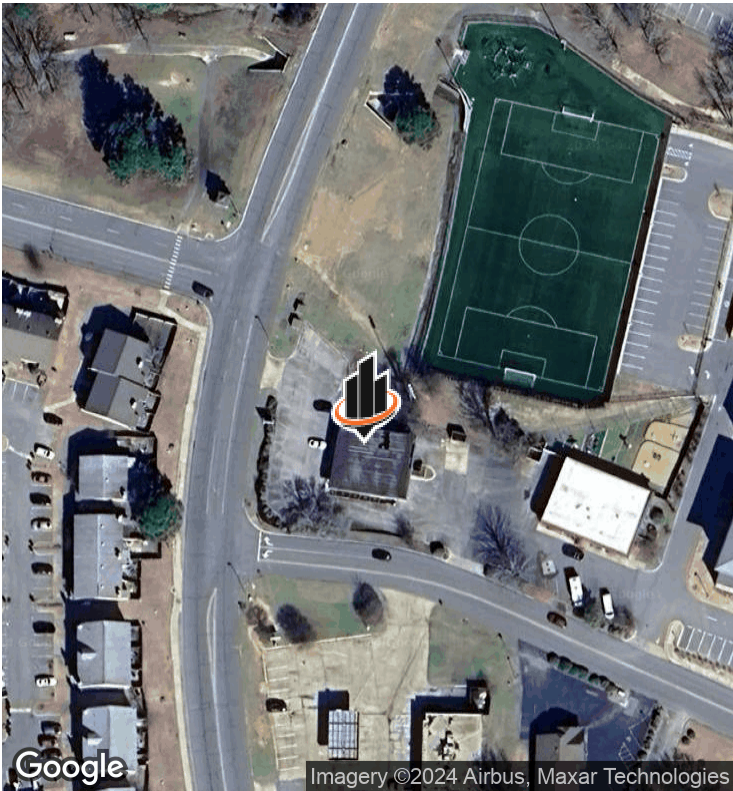


PROPERTY SUMMARY



OFFERING SUMMARY

LEASE RATE:	\$10.00 SF/yr (MG)
AVAILABLE SF:	1,250 SF
LOT SIZE:	948,736,800 SF
BUILDING SIZE:	5,000 SF
MONTHLY COST	\$1,041.67

PROPERTY DESCRIPTION

Bottom story suite, 1250 SF Office

Discover the exceptional leasing opportunity of this prime property located at 800 Edgewood Dr, Maumelle, AR, 72113. Featuring 4 well-equipped and functional offices, a large conference room which can be optionally used as an extra office, a spacious reception area, and a convenient break room for staff comfort and relaxation. The property also includes a well-maintained restroom and ample storage closets for organizational needs. Move-in ready for immediate occupancy, this currently vacant space is ideal for a range of professional purposes.

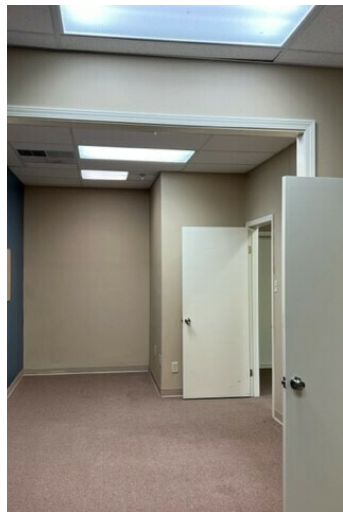
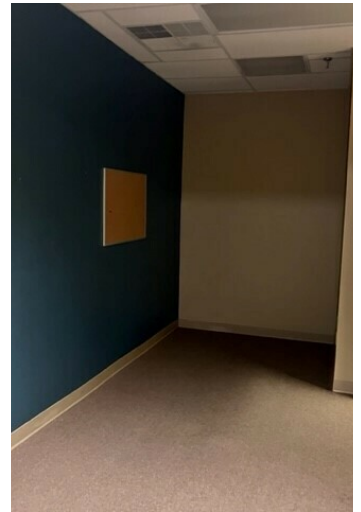
PROPERTY HIGHLIGHTS

- Prime location near Maumelle Community Center and Schools
- 4 functional offices, Large conference room, optionally used for an extra office
- Spacious reception area for welcoming clients and guests
- Convenient break room for staff comfort and relaxation

NATHAN HUTCHINS

O: 501.912.3660  
nathan.hutchins@svn.com  
AR #PB00063530

## ADDITIONAL PHOTOS



**NATHAN HUTCHINS**  
O: 501.912.3660  
nathan.hutchins@svn.com  
AR #PB00063530