



3440 LEHIGH STREET

3440 LEHIGH STREET
ALLENTOWN, PA 18103

Tom Skeans, CCIM
Managing Director
484.245.1003
tom.skeans@svn.com

Michael Ciccone, Jr.
Associate Advisor
484.245.1034
michael.ciccone@svn.com

Property Summary



OFFERING SUMMARY

Available SF: Up to 16,156 SF

Sub-Lease Rate: Negotiable (NNN)

Lot Size: 3.33 Acres

Year Built: 1987

Building Size: 38,486 SF

Renovated: 2019

Zoning: C2 - Neighborhood commercial

Market: Lehigh Valley

PROPERTY OVERVIEW

2nd floor office space available for sub-lease. Initial term of the sublease shall not go beyond August 31, 2026. Options

PROPERTY HIGHLIGHTS

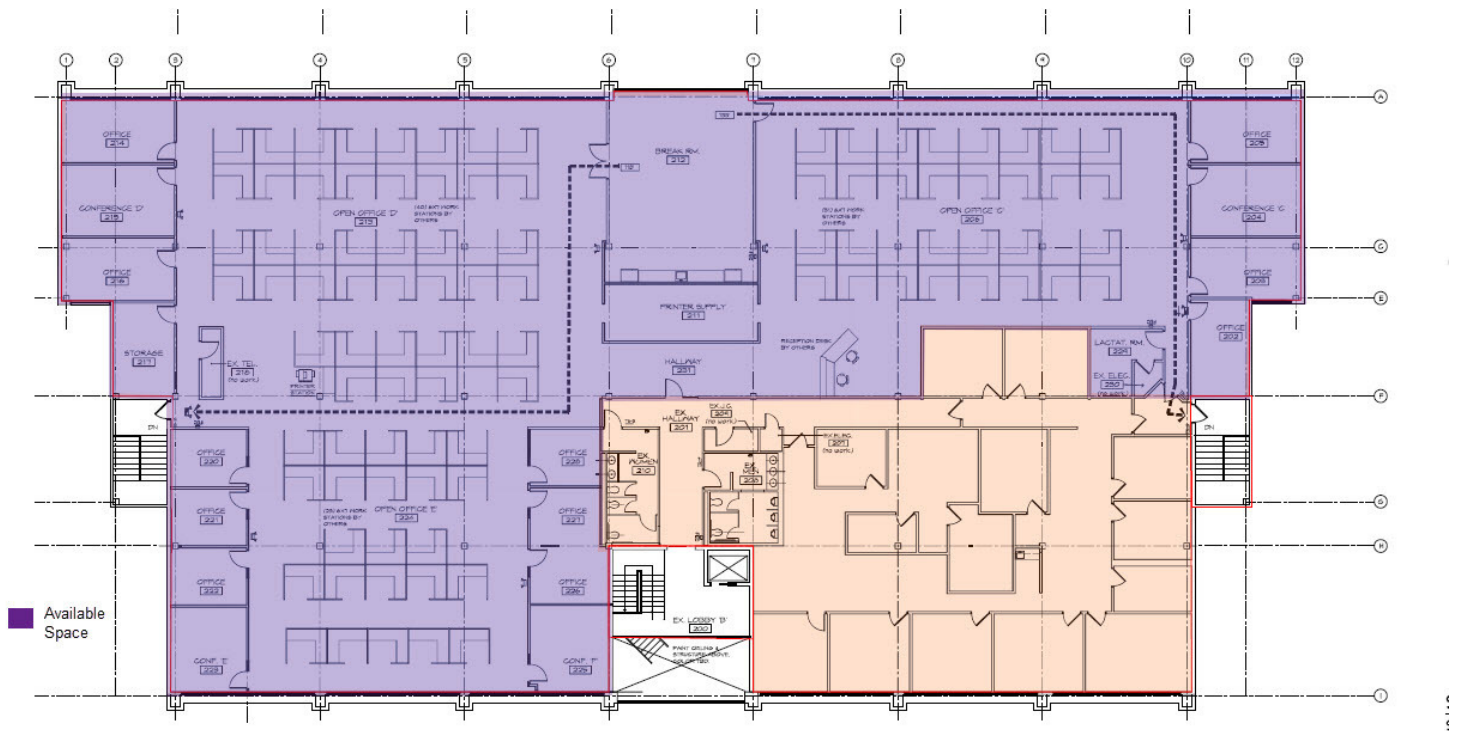
- Great Visibility on Lehigh St.
- Fully Renovated Building
- Ample Parking-200+ spaces!
- Easy Access to I-78
- Strong Demographics

Additional Photos

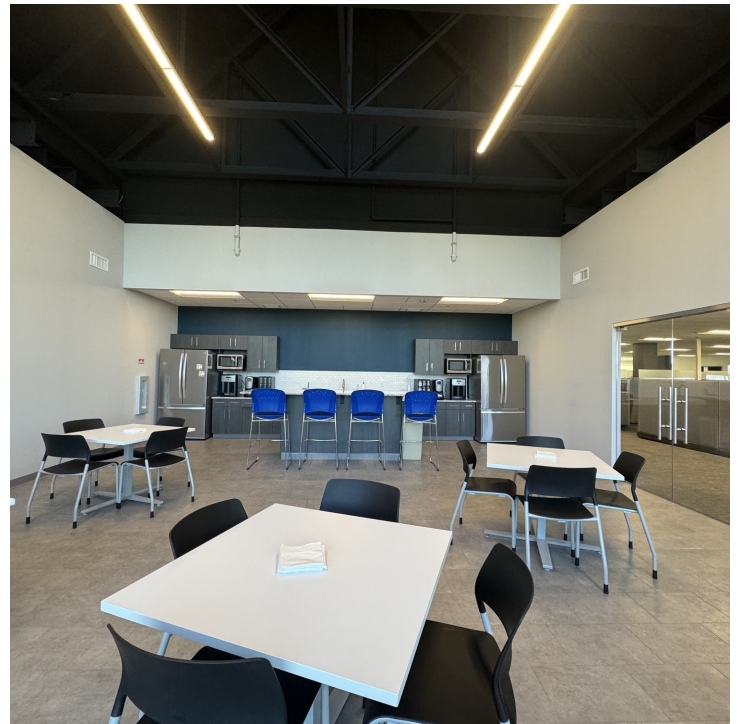


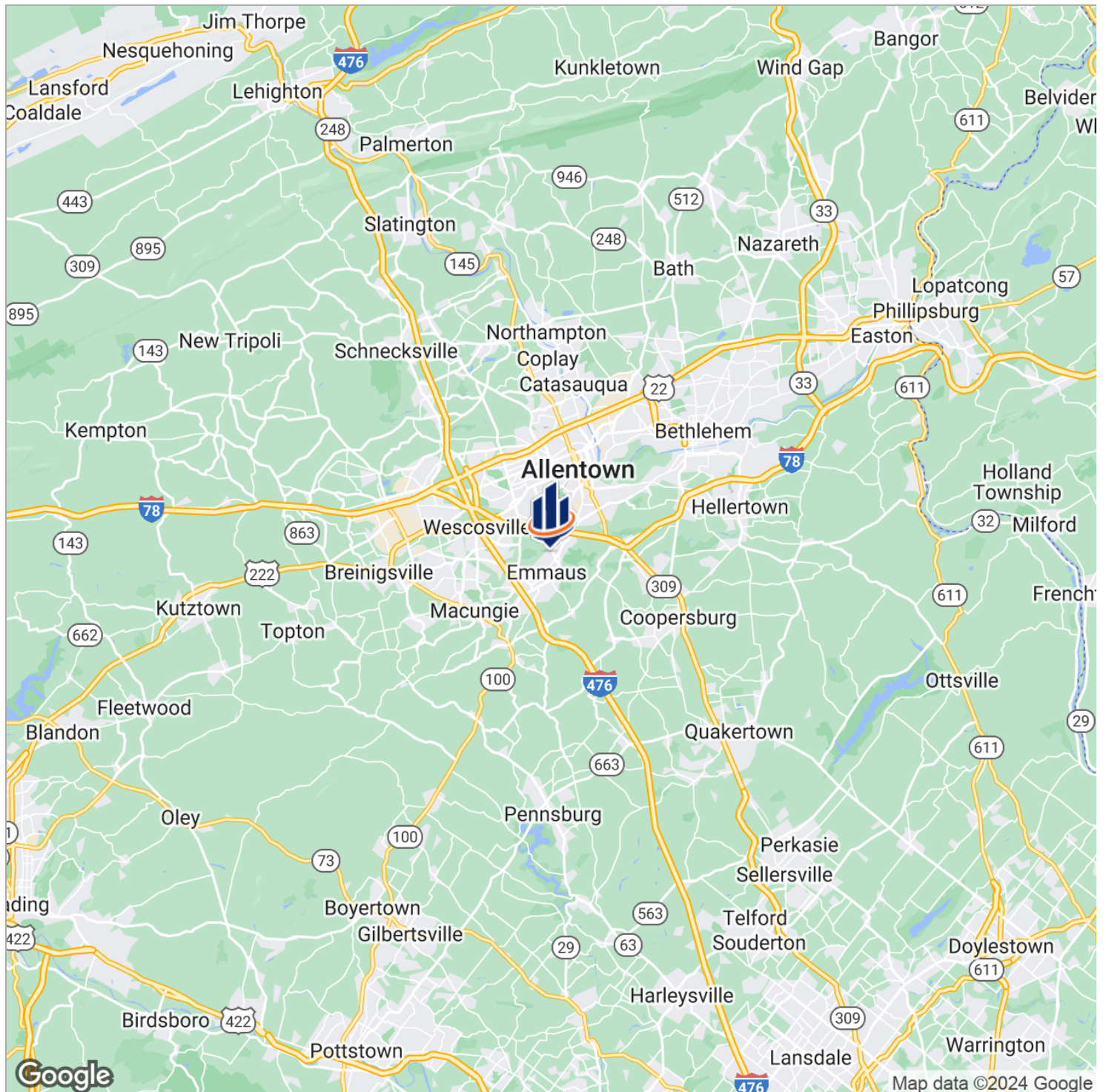
Floor Plans

[Not to Scale]



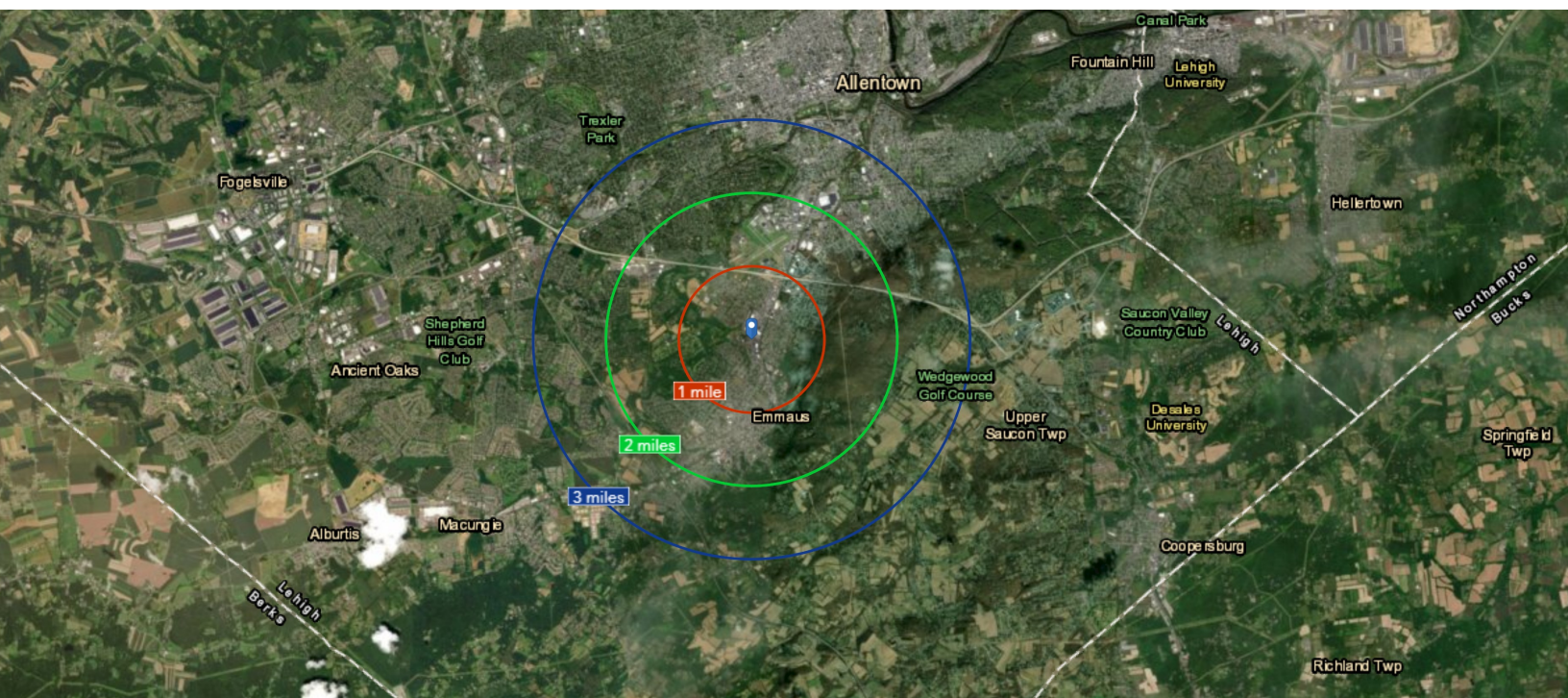
Additional Photos





Retailer Map





POPULATION	1 MILE	2 MILES	3 MILES
Total population	8,255	23,661	64,509
Median age	42.7	43.7	40.3
Median age (Male)	39.9	42.2	38.3
Median age (Female)	44.1	45.2	41.4

HOUSEHOLDS & INCOME	1 MILE	2 MILES	3 MILES
Total households	3,396	10,133	26,342
# of persons per HH	2.4	2.32	2.4
Average HH income	\$78,648	\$84,492	\$68,757
Average house value	\$266,093	\$255,897	\$254,301