



Faropoint



BINSWANGER

Est. 1982



INDUSTRIAL BUILDING AVAILABLE FOR SALE OR LEASE

1803 Underwood Blvd, Delran, NJ

PROPERTY HIGHLIGHTS

- **AVAILABLE SPACE:**
17,801 SF
- **LAND:**
1.02 AC
- **CLEAR HEIGHT:**
17' – 4"
- **TRUCK COURT DEPTH:**
84'
- **LOADING DOCKS:**
Two (2) 8'x8' tailgate loading docks
- **DRIVE INS:**
One (1) 8'x8' ramped drive-in door
- **PARKING:**
Thirty (30) marked surface spaces
- **ELECTRICAL SERVICES:**
400 AMP, 3-Phase 480/277v
- **COLUMN SPACING:**
30' x 50'
- **FIRE PROTECTION:**
100% wet sprinkler system
- **ROOF:**
EPDM
- **LIGHTING:**
LED
- **SEWAGE:**
Public Water and Sewer
- **PARCEL:**
Block 9, Lot 41.02
- **2023 CAM ESTIMATE:**
\$1.70 / SF
- **ZONING:**
M-1 – Limited Industrial / Office

ABOUT FAROPOINT:

Faropoint is a well-capitalized and fully integrated real estate investment firm that specializes in industrial asset acquisitions, redevelopment and management. Local asset management and construction infrastructure with proven track record of local development experience.

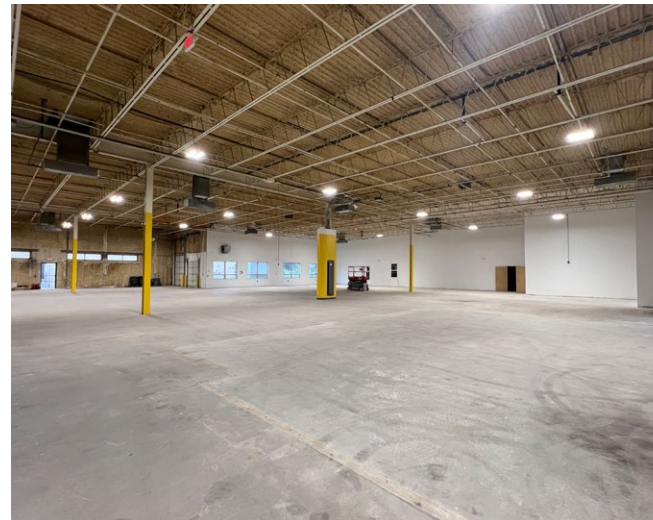
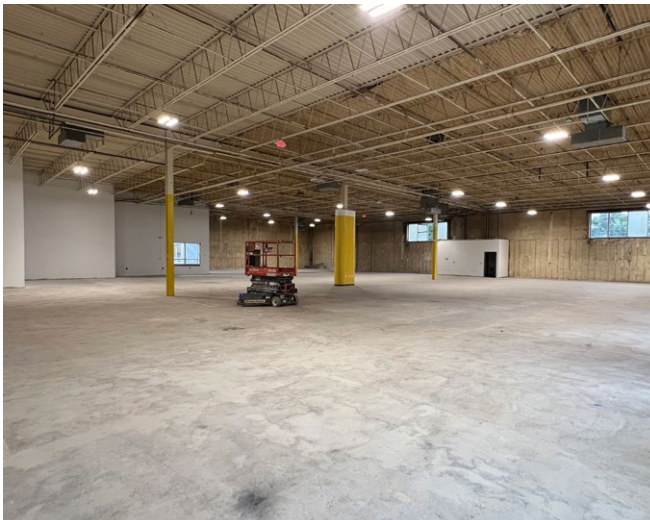
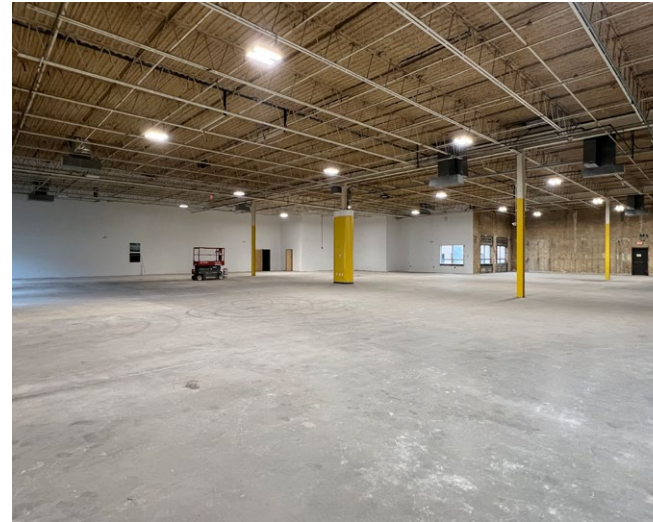
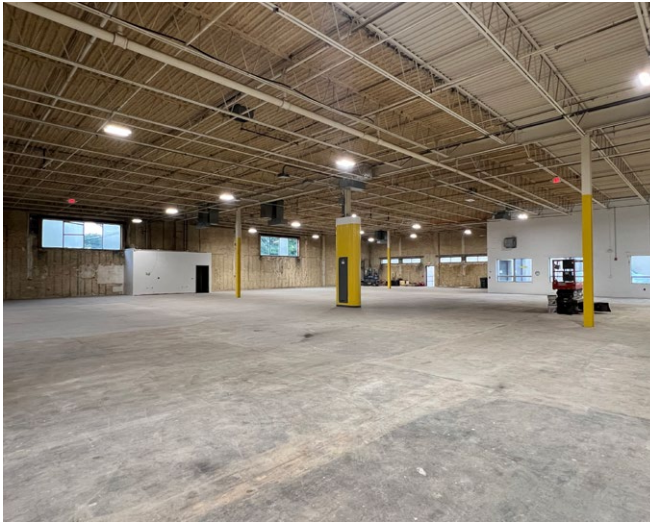
FLOOR PLAN

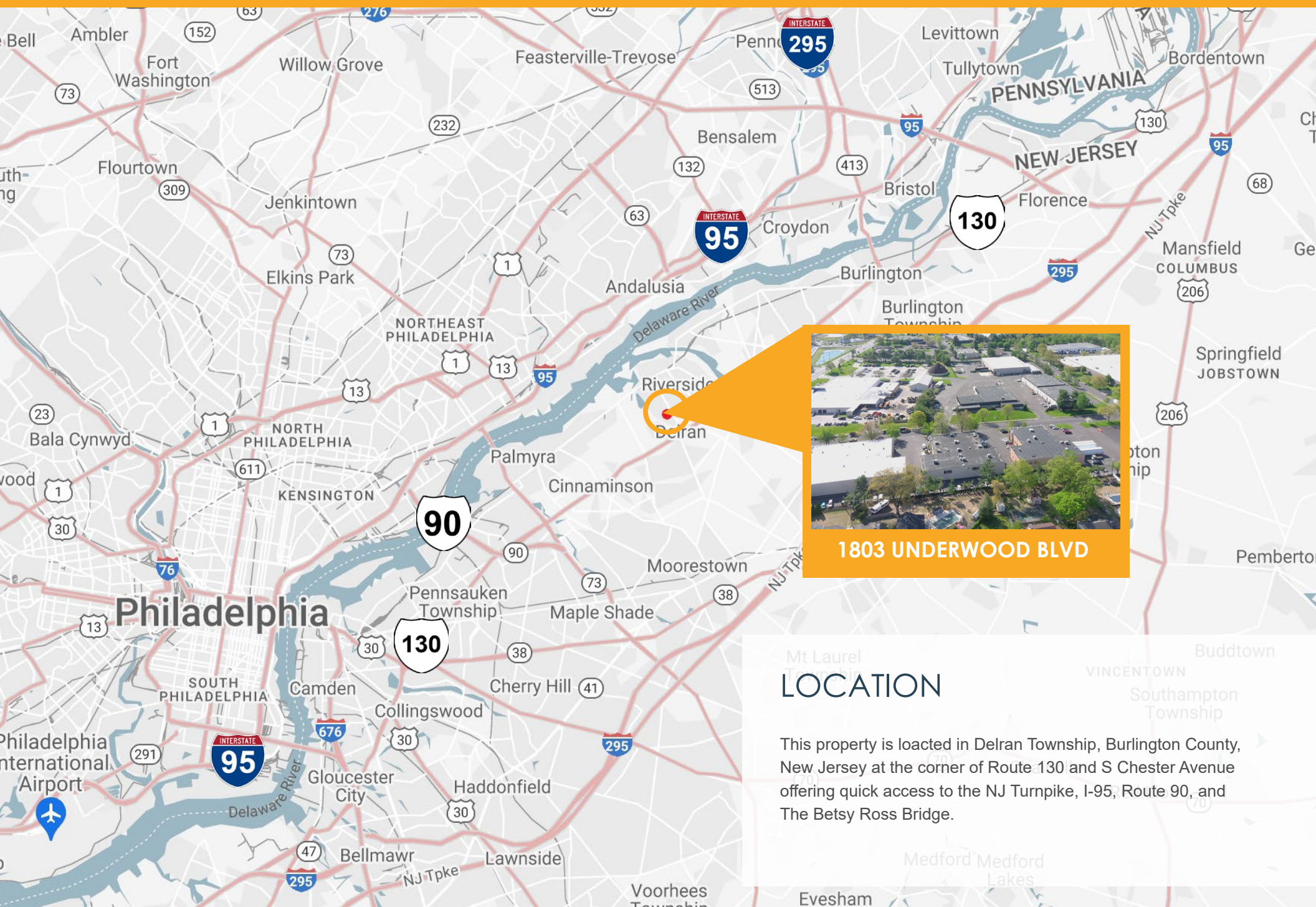


EXTERIOR PHOTOS



INTERIOR PHOTOS





1803 UNDERWOOD BLVD

LOCATION

This property is located in Delran Township, Burlington County, New Jersey at the corner of Route 130 and S Chester Avenue offering quick access to the NJ Turnpike, I-95, Route 90, and The Betsy Ross Bridge.

CONTACT



Mike Torsiello

Senior Vice President

215.448.6210

mtorsiello@binswanger.com



Three Logan Square
1717 Arch Street, Suite 5100
Philadelphia, PA, 19103
Phone: 215.448.6000
binswanger.com

The information contained herein is from sources deemed reliable, but no warranty or representation is made as to the accuracy thereof and no liability may be imposed.

