

**FOR LEASE**

# **GREEN VALLEY CIVIC CENTER**

2625 N. Green Valley Parkway  
Henderson, NV 89014



**Pete Janemark, CCIM**

Senior Vice President

D: 702.527.7923 | C: 702.885.7383

[pete.janemark@svn.com](mailto:pete.janemark@svn.com)

NV #S.76731





# PROPERTY SUMMARY



## OFFERING SUMMARY

<b>BUILDING SIZE:</b>	106,920 SF
<b>AVAILABLE SF:</b>	1,229 - 1,686 SF
<b>LOT SIZE:</b>	5.96 Acres
<b>ZONING:</b>	CC
<b>APN:</b>	178-06-512-001, 002, 003, 004 and 178-06- 510-003

## PROPERTY OVERVIEW

Green Valley Professional Center is conveniently located single story office complex located at the intersection of Green Valley Parkway and Sunset Road in Henderson. The grounds are open and spacious with upgraded landscaping and break areas. The area offers substantial shopping, services and eateries in all direction, many within walking distance. The property is flanked by the Green Valley Library, and the intersection is served by two major bus routes.

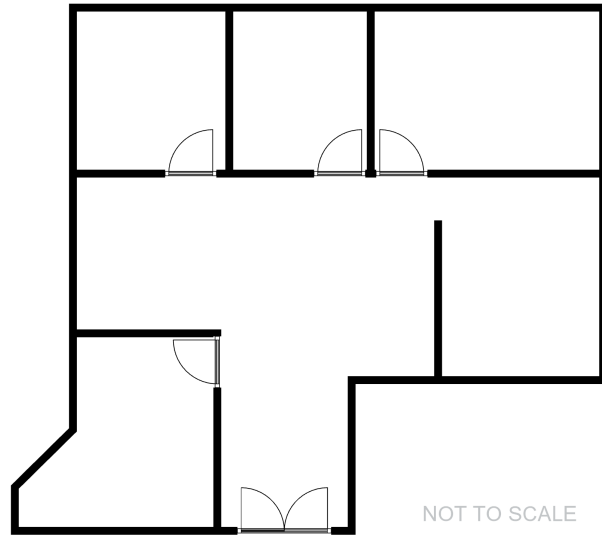
## PROPERTY HIGHLIGHTS

- Signalized entrance
- Ample dedicated parking
- Ample shopping and services
- Central Location

**PETE JANEMARK, CCIM**  
O: 702.527.7923 | C: 702.885.7383  
pete.janemark@svn.com  
NV #S.76731



## 2625 GREEN VALLEY PKWY - SUITE 215 - ±1,229 SF



### SUITE DESCRIPTION

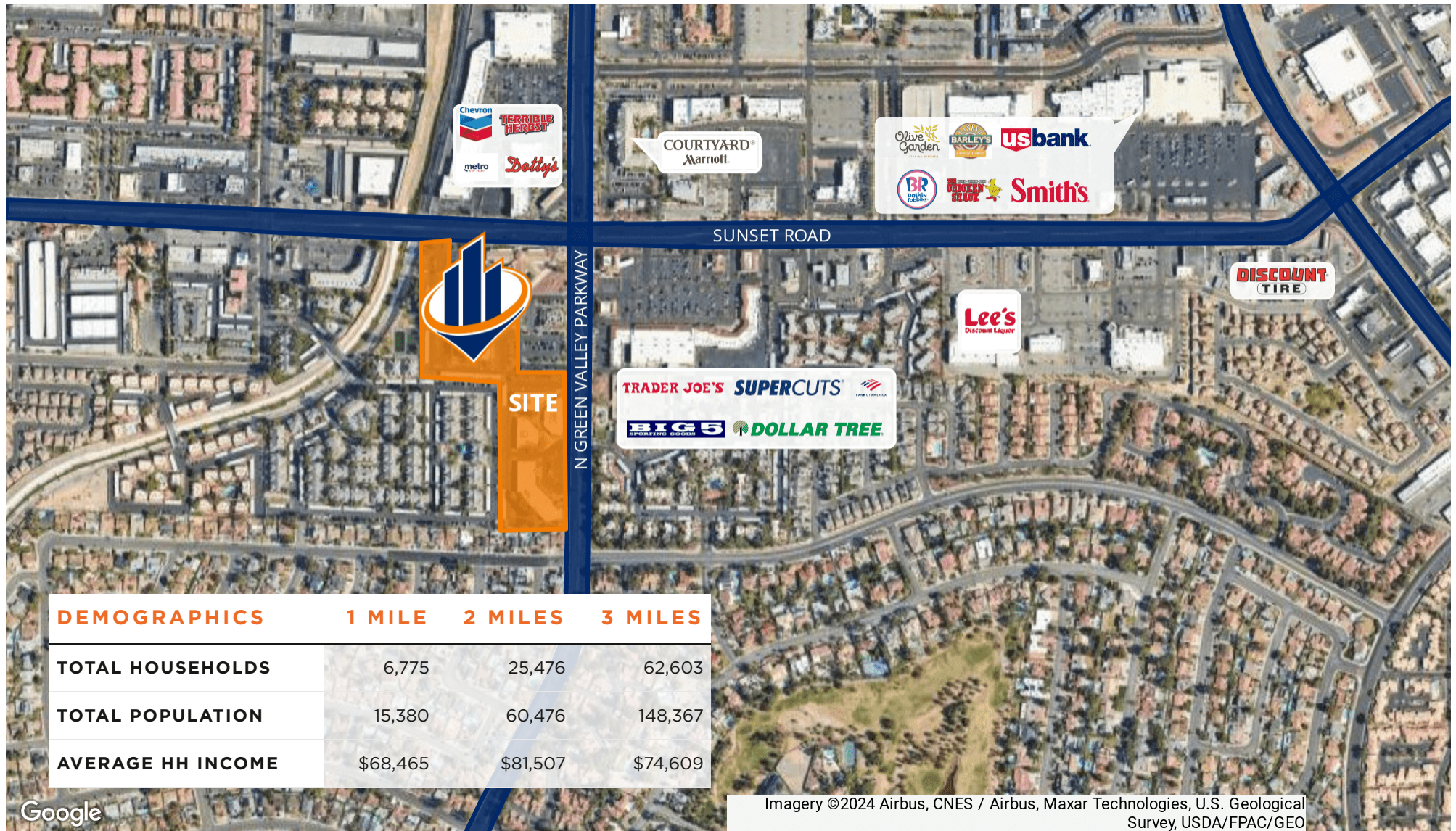
This very efficient and functional space features an open reception/work area, five windowed offices, and a conference room.



**PETE JANEMARK, CCIM**  
O: 702.527.7923 | C: 702.885.7383  
pete.janemark@svn.com  
NV #S.76731



## RETAILER MAP



**PETE JANEMARK, CCIM**  
O: 702.527.7923 | C: 702.885.7383  
pete.janemark@svn.com  
NV #S.76731