

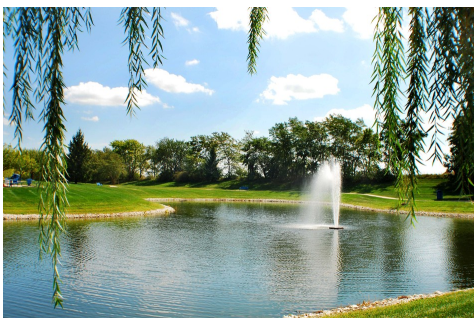


Brickstone

1055 Jordan Creek Parkway | West Des Moines, IA 50266

Country Club Office Plaza

3,151 - 10,991 SF Available For Lease
Call **515.223.4500** to set up a showing



Building Features

- Plentiful, free parking
- Private fiber network
- Beautiful pond views
- Beautiful atrium lobby
- Card access security available
- Highly visible from Jordan Creek Parkway & Ashworth Road
- Outdoor collaboration space
- Served by food trucks and Foodsby

Park Amenities

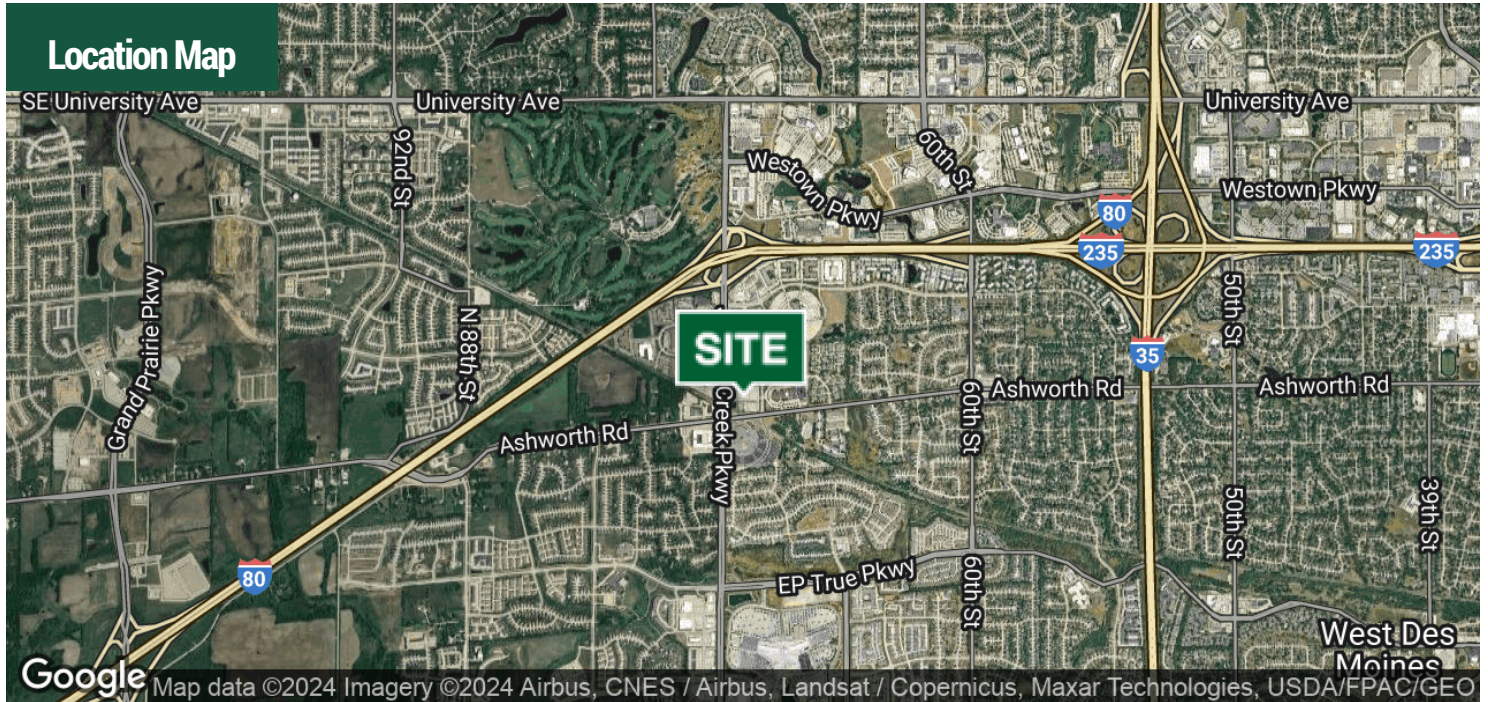
- On-site professional property management
- Executive conference center & child care center
- Wellness center with shower & locker rooms
- Beautiful green space with pond, picnic areas & trails
- Convenient access to I-80 & Jordan Creek Parkway
- Nearby Jordan Creek Mall, restaurants & banking
- Flexibility to accommodate expansion needs
- Space planning/design, technology, construction & move coordination services available

FOR LEASE

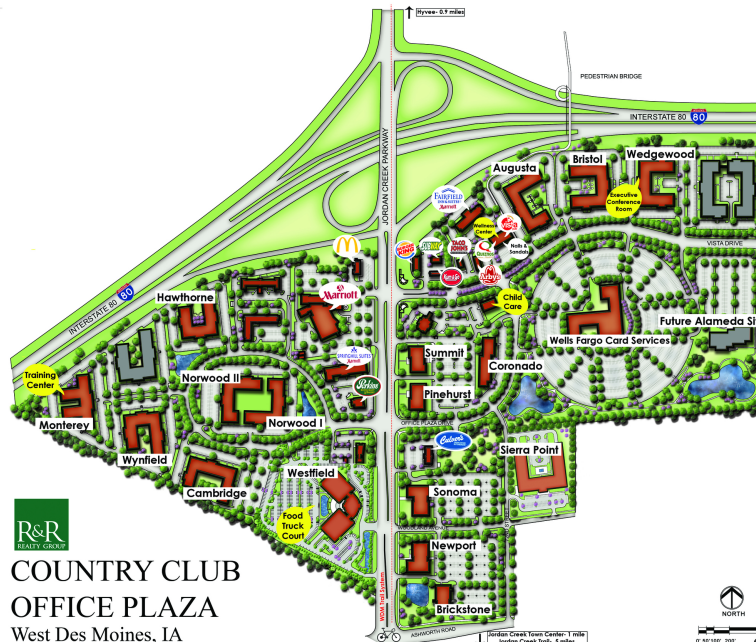


Brickstone

1055 Jordan Creek Parkway | Country Club Office Plaza



Site Plan



**COUNTRY CLUB
OFFICE PLAZA**
West Des Moines, IA



R&R REAL ESTATE ADVISORS
1080 Jordan Creek Pkwy, Suite 200 N.
West Des Moines, IA 50266
P: 515.223.4500 | F: 515.223.7235
rrealty.com

The information contained herein, we believe, has been obtained from reasonably reliable sources, and we have no reason to doubt the accuracy of such information; however, no warranty or guarantee either expressed or implied, is made with respect to the accuracy thereof. All such information submitted is subject to error, omissions, or changes in conditions, prior to sale, lease, or withdrawal without notice. All information contained herein should be verified to the satisfaction of the persons relying thereon.