

welltower

MEDICAL OFFICE SPACE
FOR LEASE

Click or Scan Below



For Information:

RYAN LEWIS

AVP, Leasing

561.354.4822

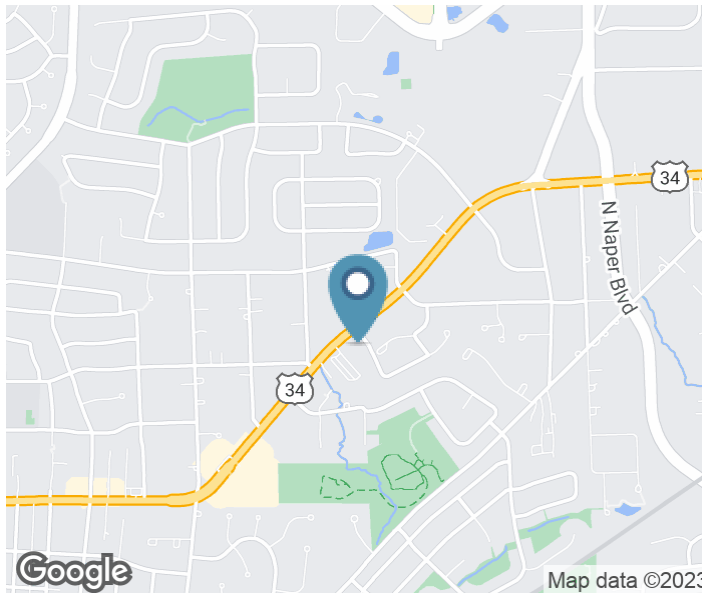
rlewis@welltower.com

1020 E Ogden Ave

NAPERVILLE, IL

medicaloffice.welltower.com

EXECUTIVE SUMMARY



Location Description

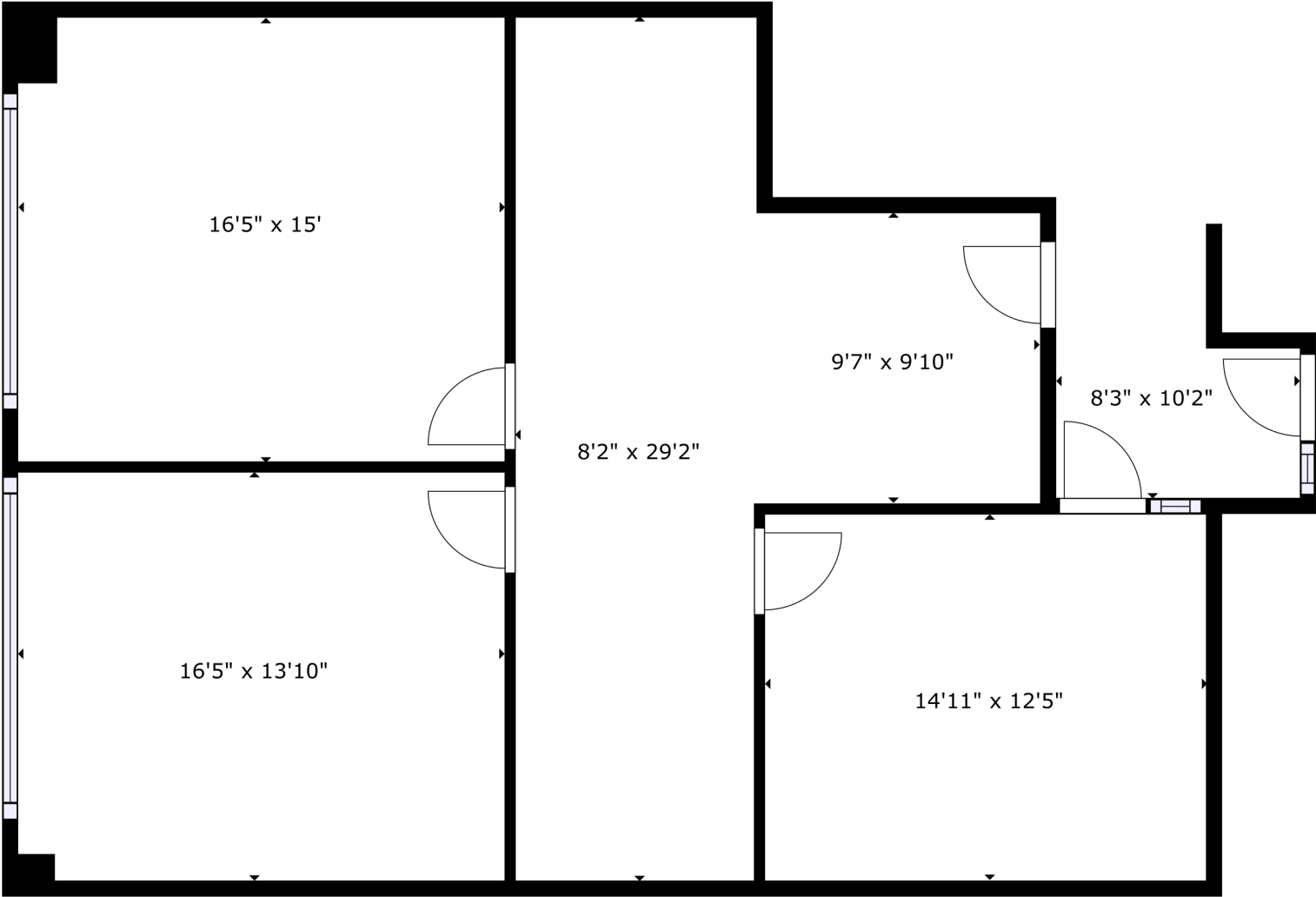
Easily accessible for patients in all west/southwest suburbs via I-88, I-355, and Ogden Avenue

Property Highlights

- 50,000 SF medical office building
- Ample Parking: 5 spaces per 1,000 SF in a lighted lot
- Prime Location
- 2.8 miles from Edwards Hospital and 7 miles from Advocate Good Samaritan Hospital

FLOOR PLANS

welltower



203

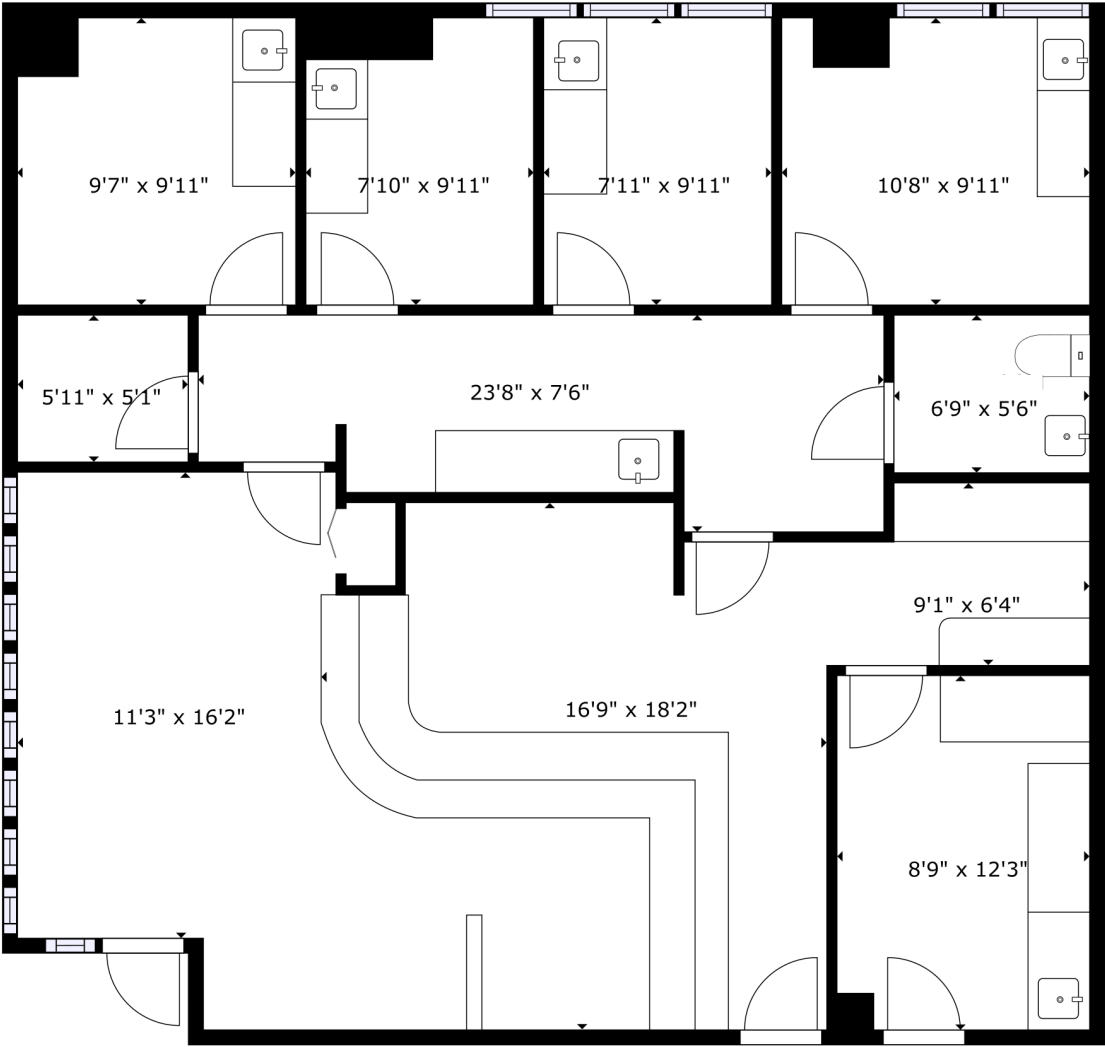
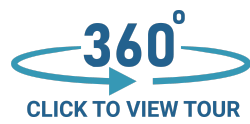
1,285 RSF

RYAN LEWIS
AVP, Leasing
561.354.4822
rlewis@welltower.com



FLOOR PLANS

welltower



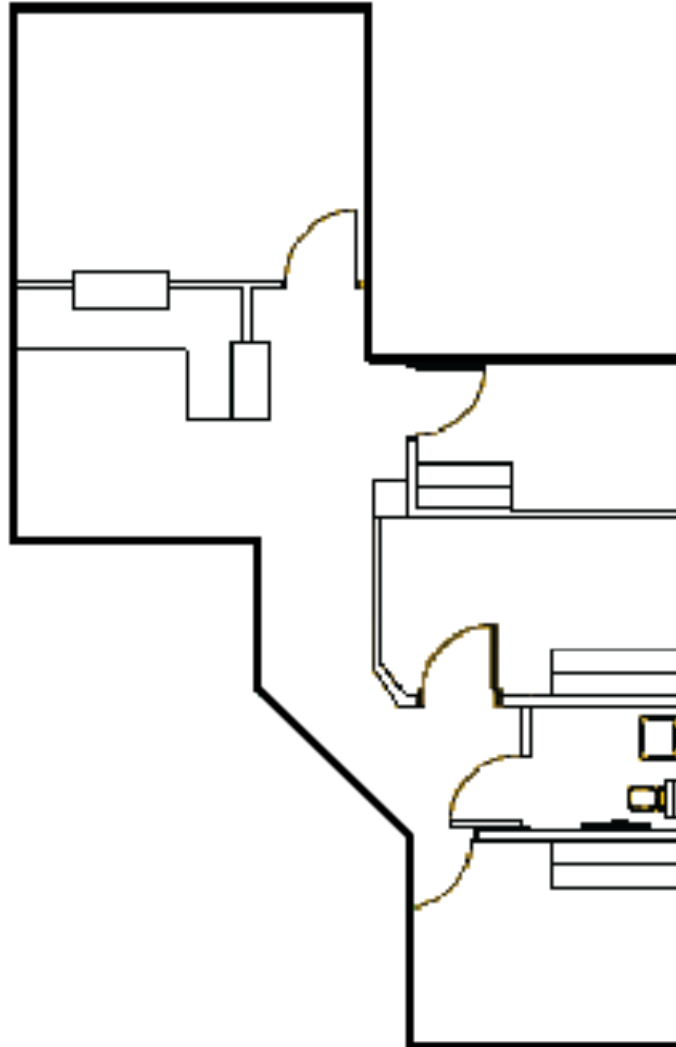
306

1,425 RSF

RYAN LEWIS
AVP, Leasing
561.354.4822
rlewis@welltower.com

FLOOR PLANS

welltower



309

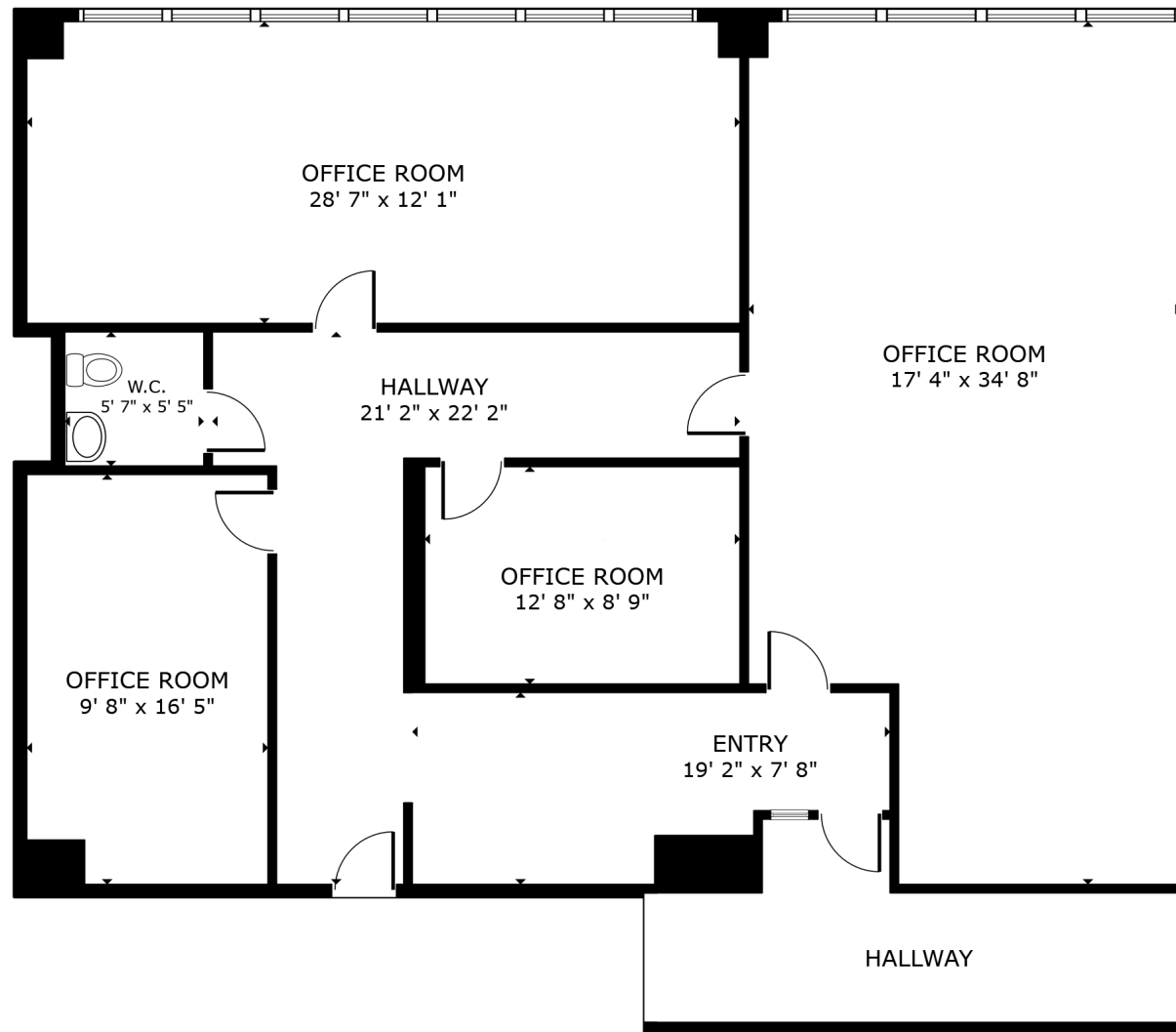
1,099 RSF

RYAN LEWIS

AVP, Leasing
561.354.4822
rlewis@welltower.com

FLOOR PLANS

welltower



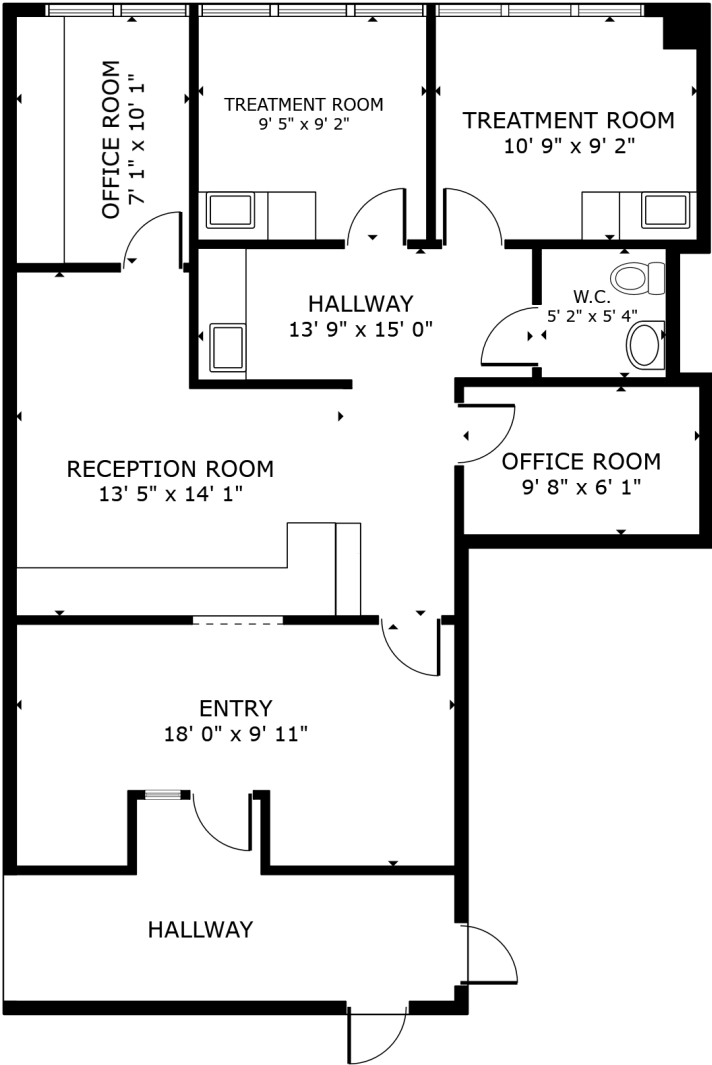
312

1,918 RSF

RYAN LEWIS

AVP, Leasing
561.354.4822
rlewis@welltower.com

FLOOR PLANS



314

1,049 RSF

RYAN LEWIS
AVP, Leasing
561.354.4822
rlewis@welltower.com



welltower