



3068-3082 Connahbrook Dr

Memphis, Tennessee 38118



Property Features

- 22,650 SF
- Southwest Submarket
- Clear Height: 18'
- Column Spacing: 50' x 50'
- Warehouse Floor: 5"
- Drive-In Bays: 28
- Dock Doors: 6
- Grade Level: 6
- Sprinkler System: Wet
- Office: Minimal
- Within less 3 minutes of HWY 55
- 10 minutes away from Memphis International Airport



Contact

Brian Califf, CCIM

Executive Vice President
(901) 526-3100
bcaliff@saigcompany.com

Reynolds Willis

Associate
(901) 526-3100
rwillis@saigcompany.com



Contact

Brian Califf, CCIM

Executive Vice President

(901) 526-3100

bcaliff@saigcompany.com

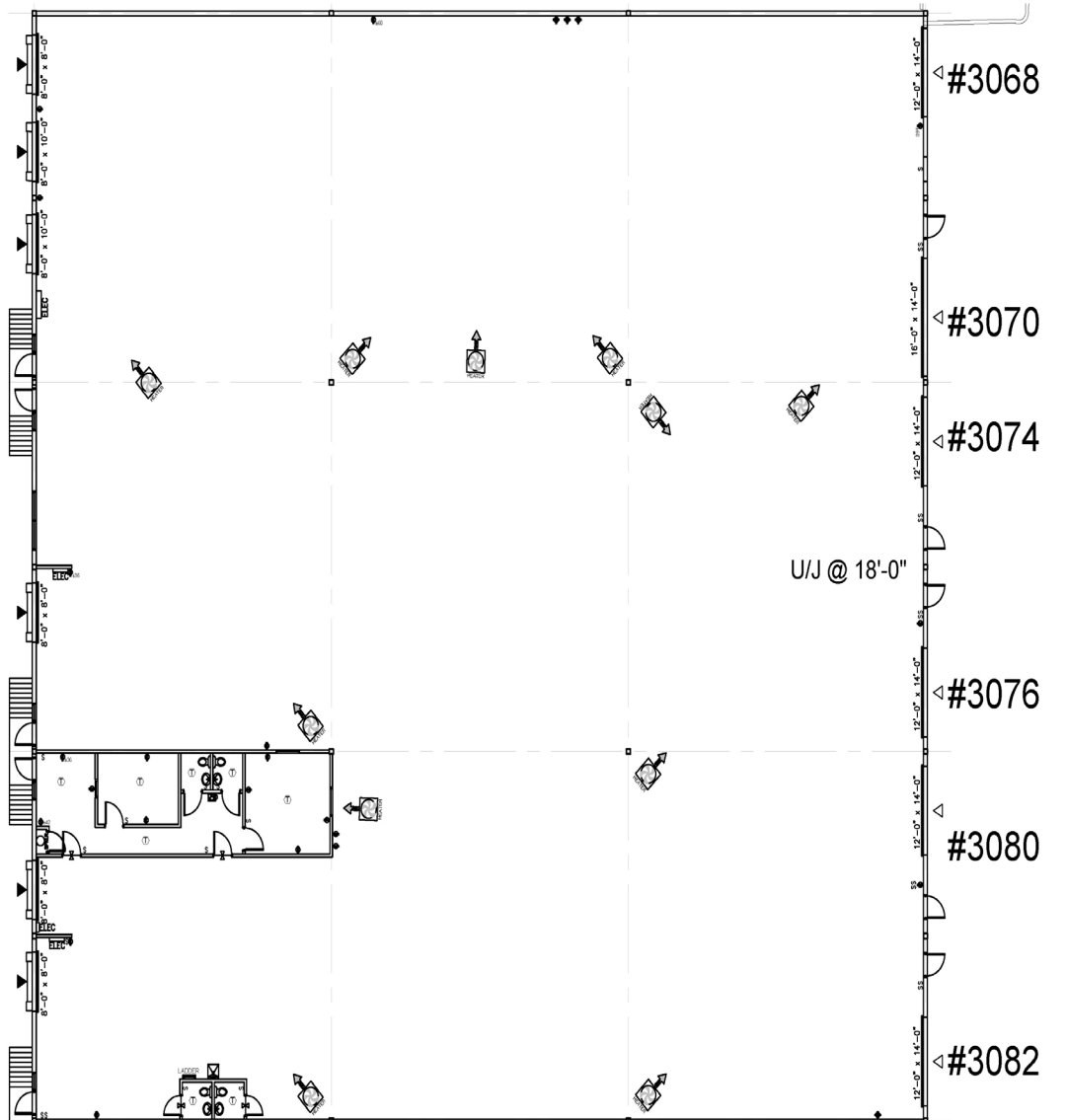
Reynolds Willis

Associate

(901) 526-3100

rwillis@saigcompany.com

Space Plan



3068-3082 Connahbrook Drive 22,650 RSF
SCALE: 1/16" = 1'-0"
(11x17)

Legend:		
Key Plan		
no. issue date		
Title:		
Floor Plan		
Scale: 1/16" = 1'-0"		
Drawn By: JJC		
Date:		
Project Name and Location:		
3068-82 Connahbrook Dr Memphis, TN 38116		
Suite/Room #		

Contact

Brian Califf, CCIM

Executive Vice President
(901) 526-3100

bcaliff@saigcompany.com

Reynolds Willis

Associate

(901) 526-3100

rwillis@saigcompany.com

OLYMBEC USA

SAIG Company

COMMERCIAL REAL ESTATE SERVICES, WORLDWIDE
MEMPHIS, TENNESSEE (901) 526-3100

NO WARRANTY OR REPRESENTATION, EXPRESS OR IMPLIED, IS MADE AS TO THE ACCURACY OF THE INFORMATION CONTAINED HEREIN, AND THE SAME IS SUBMITTED SUBJECT TO ERRORS, OMISSIONS, CHANGE OF PRICE, RENTAL OR OTHER CONDITIONS, PRIOR SALE, LEASE OR FINANCING, OR WITHDRAWAL WITHOUT NOTICE, AND OF ANY SPECIAL LISTING CONDITIONS IMPOSED BY OUR PRINCIPALS NO WARRANTIES OR REPRESENTATIONS ARE MADE AS TO THE CONDITION OF THE PROPERTY OR ANY HAZARDS CONTAINED THEREIN ARE ANY TO BE IMPLIED.