

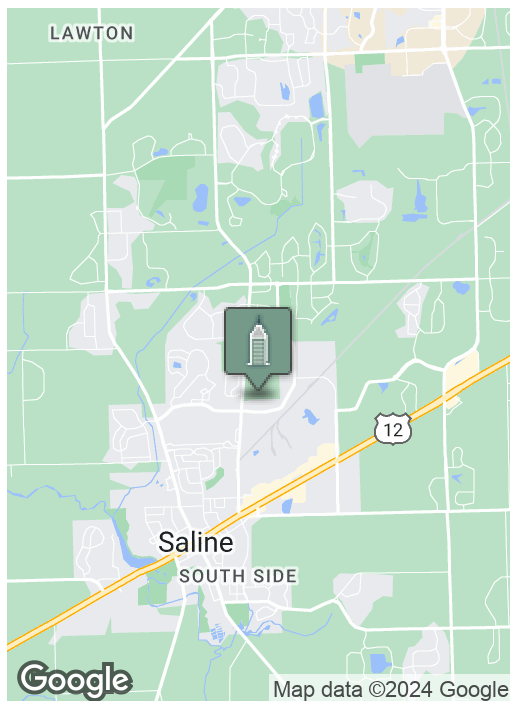
# Redies Business Park - Office

905 WOODLAND DRIVE E, SALINE, MI 48176



**Swisher**  
COMMERCIAL

## FOR LEASE



### SUMMARY

Lease Rate:

\$12.00 SF/yr  
Gross - Includes Utilities

Office SF:

6,008 SF

Zoning:

I-2 (General Industrial)

### PROPERTY HIGHLIGHTS

- City of Saline - REDIES Business Park
- Fully renovated multi-tenant office & industrial building
- 6,008 SF office available
- Ample parking
- Located west of Michigan Avenue (US-12)

***Building  
relationships.***

208 East Washington Street Ann Arbor, MI 48104

734.663.0501

**Tony Caprarese**

734.904.3521

TONYC@SWISHERCOMMERCIAL.COM

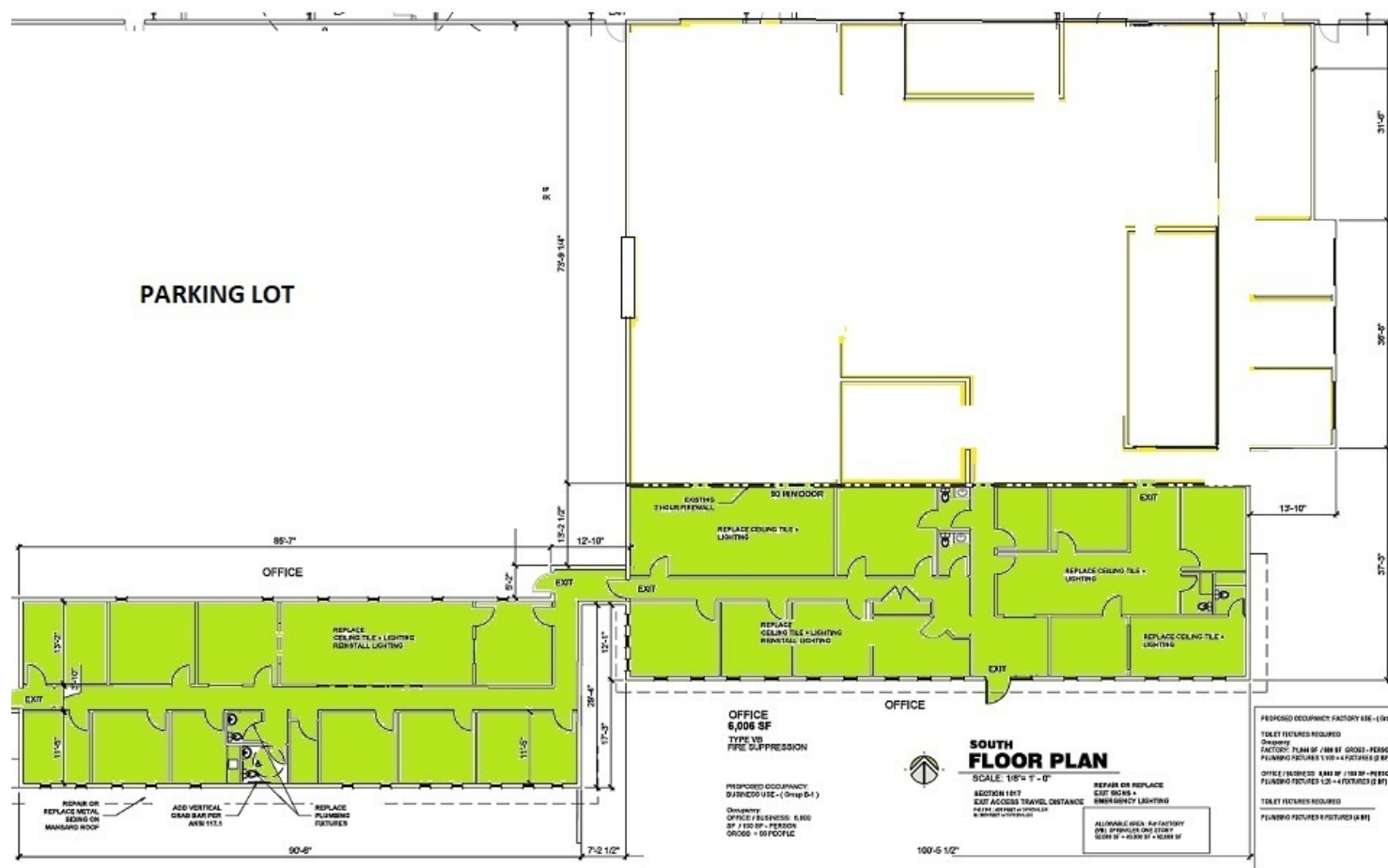
SWISHERCOMMERCIAL.COM

# Office for Lease

905 WOODLAND DRIVE E, SALINE, MI 48176



**Swisher**  
COMMERCIAL



AVAILABLE for LEASE

OFFICE 6,008 SF

**Building  
relationships.**

208 East Washington Street Ann Arbor, MI 48104

734.663.0501

Tony Caprarese

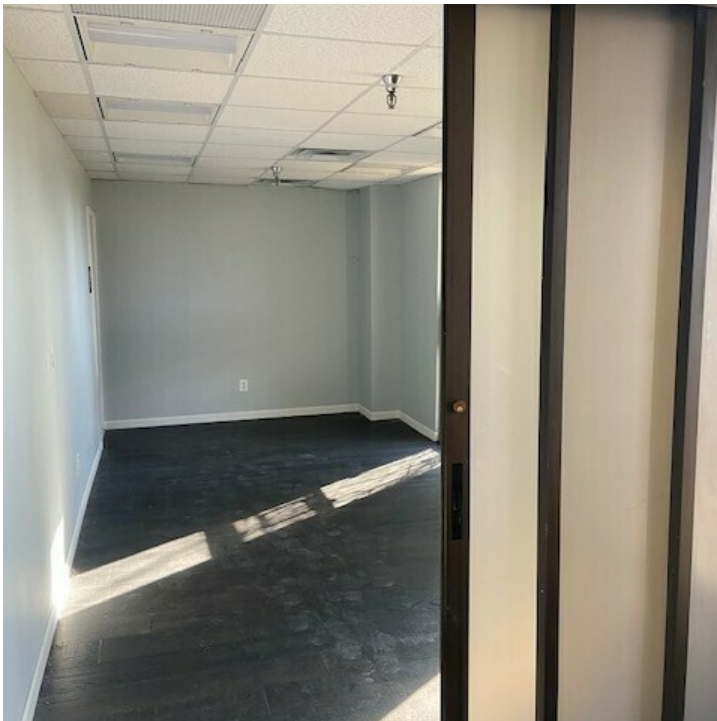
734.904.3521

TONYCAP@SWISHERCOMMERCIAL.COM

SWISHERCOMMERCIAL.COM

# Office for Lease

905 WOODLAND DRIVE E, SALINE, MI 48176



***Building  
relationships.***

208 East Washington Street Ann Arbor, MI 48104

734.663.0501

Tony Caprarese

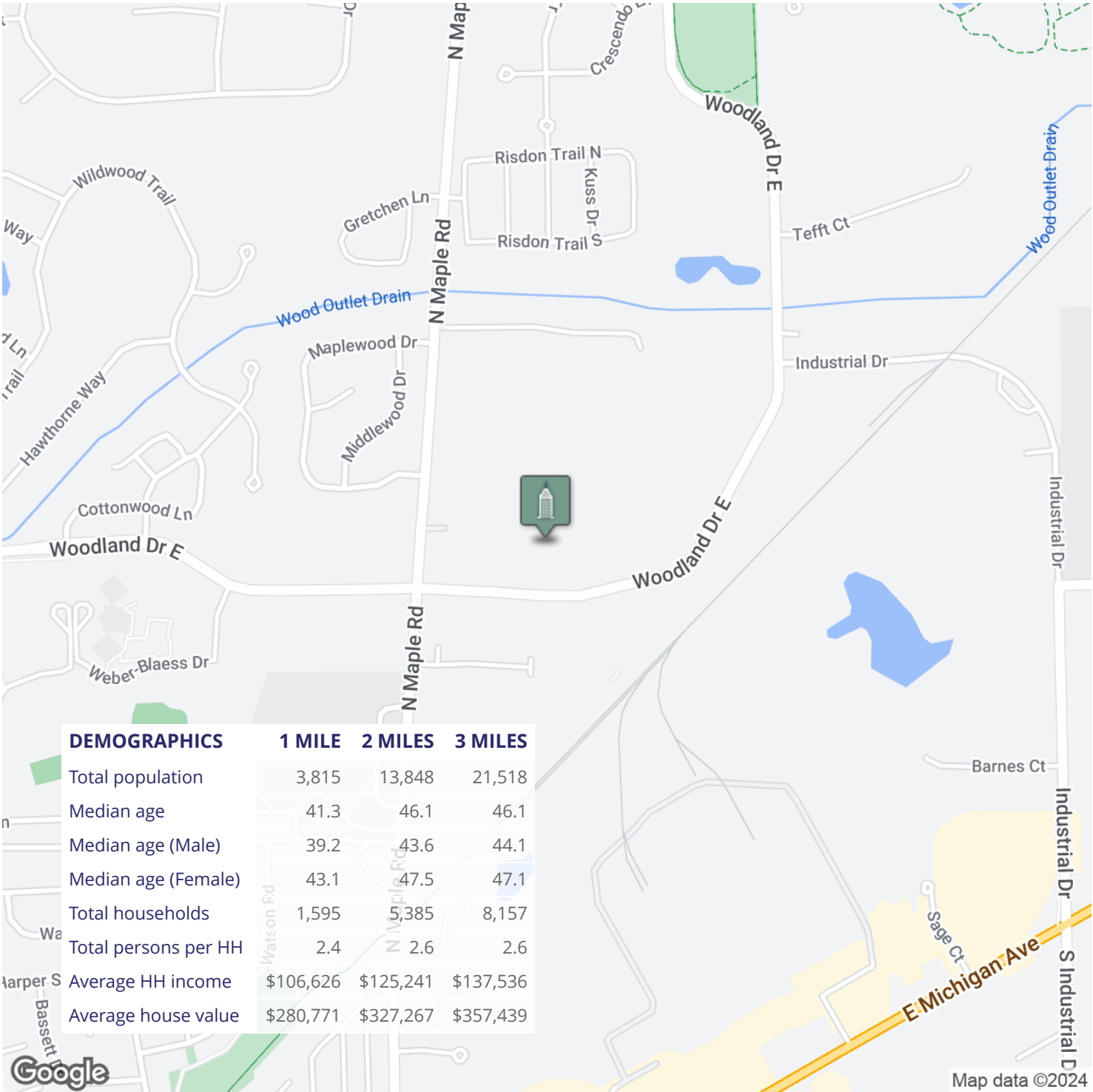
734.904.3521

TONYC@SWISHERCOMMERCIAL.COM

SWISHERCOMMERCIAL.COM

# Office for Lease

905 WOODLAND DRIVE E, SALINE, MI 48176



**Building  
relationships.**