

INDUSTRIAL PROPERTY // FOR LEASE

3,650 SF INDUSTRIAL SPACE FOR LEASE

3150 MARTIN RD

COMMERCE TOWNSHIP, MI 48390



- 3,650 SF Industrial Space
- 770 SF Office
- 16' Clear
- (1) 12' X 12' Door
- 200 AMP / 220 Volt



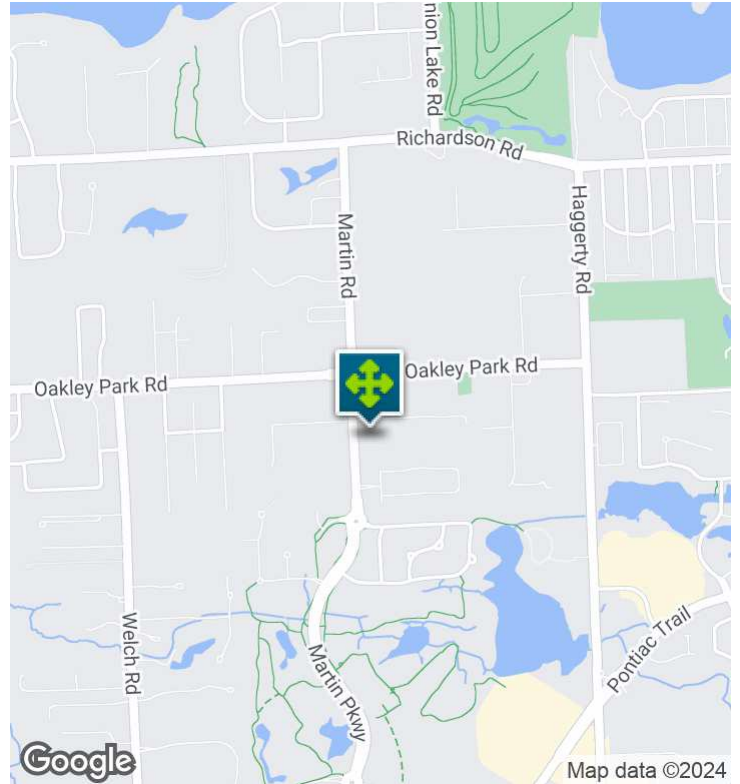
P.A. COMMERCIAL
Corporate & Investment Real Estate

26555 Evergreen Road, Suite 1500
Southfield, MI 48076
248.358.0100
paccommercial.com

We obtained the information above from sources we believe to be reliable. However, we have not verified its accuracy and make no guarantee, warranty or representation about it. It is submitted subject to the possibility of errors, omissions, change of price, rental or other conditions, prior sale, lease or financing, or withdrawal without notice. We include projections, opinions, assumptions or estimates for example only, and they may not represent current, past or future performance of the property. You and your tax and legal advisors should conduct your own investigation of the property and transaction.

3150 MARTIN RD , COMMERCE TOWNSHIP, MI 48390 // FOR LEASE

EXECUTIVE SUMMARY



| | |
|------------|-------------------------|
| Lease Rate | \$9.95 SF/YR (GROSS) |
|------------|-------------------------|

OFFERING SUMMARY

| | |
|----------------|-----------|
| Building Size: | 44,172 SF |
| Available SF: | 3,650 SF |
| Lot Size: | 4.5 Acres |
| Year Built: | 1980 |
| Renovated: | 2021 |
| Zoning: | LT IND |
| Market: | Detroit |

PROPERTY OVERVIEW

3,650 SF with a 770 SF office area with (3) private offices, and (2) bathrooms for lease. 16' clear, (1) 12' x 12' door, 200 AMP/ 220 Volt. Mezzanine above the office; fantastic location at Martin Rd and M-5, Oakley Park. The gross rate includes taxes, insurance, and exterior maintenance.

LOCATION OVERVIEW

Located on the east side of Martin Road, south of Ridgeway Court in Commerce Township. Excellent location just off M-5, I-275, and I-696. Close to the Lakes Communities.

PROPERTY HIGHLIGHTS

- 3,650 SF Industrial Space
- 770 SF Office
- 16' Clear
- (1) 12' X 12' Door
- 200 AMP / 220 Volt

3150 MARTIN RD , COMMERCE TOWNSHIP, MI 48390 // FOR LEASE

INDUSTRIAL DETAILS

| | |
|-------------------------|--------------------|
| Property Type: | Industrial |
| Building Size: | 44,172 SF |
| Space Available: | 3,650 SF |
| Shop SF: | 2,880 SF |
| Office SF: | 770 SF |
| Mezzanine: | Yes |
| Occupancy: | Immediate |
| Zoning: | LT IND |
| Lot Size: | 4.5 Acres |
| Parking Spaces: | 3 |
| Year Built / Renovated: | 1980 |
| Construction Type: | Block/Brick |
| Clear Height: | 16' |
| Overhead Doors: | (1) 12' X 12' |
| Power: | 200 AMP / 220 Volt |
| Air Conditioning: | No |
| Heat Type: | Tube Radiant |
| Lighting: | Fluorescent |
| Taxes: | Paid by Landlord |



P.A. COMMERCIAL
Corporate & Investment Real Estate

We obtained the information above from sources we believe to be reliable. However, we have not verified its accuracy and make no guarantee, warranty or representation about it. It is submitted subject to the possibility of errors, omissions, change of price, rental or other conditions, prior sale, lease or financing, or withdrawal without notice. We include projections, opinions, assumptions or estimates for example only, and they may not represent current, past or future performance of the property. You and your tax and legal advisors should conduct your own investigation of the property and transaction.

John T. Arthurs PRINCIPAL
D: 248.663.0506 | C: 248.563.3225
johna@pacommercial.com

3150 MARTIN RD , COMMERCE TOWNSHIP, MI 48390 // FOR LEASE

ADDITIONAL PHOTOS



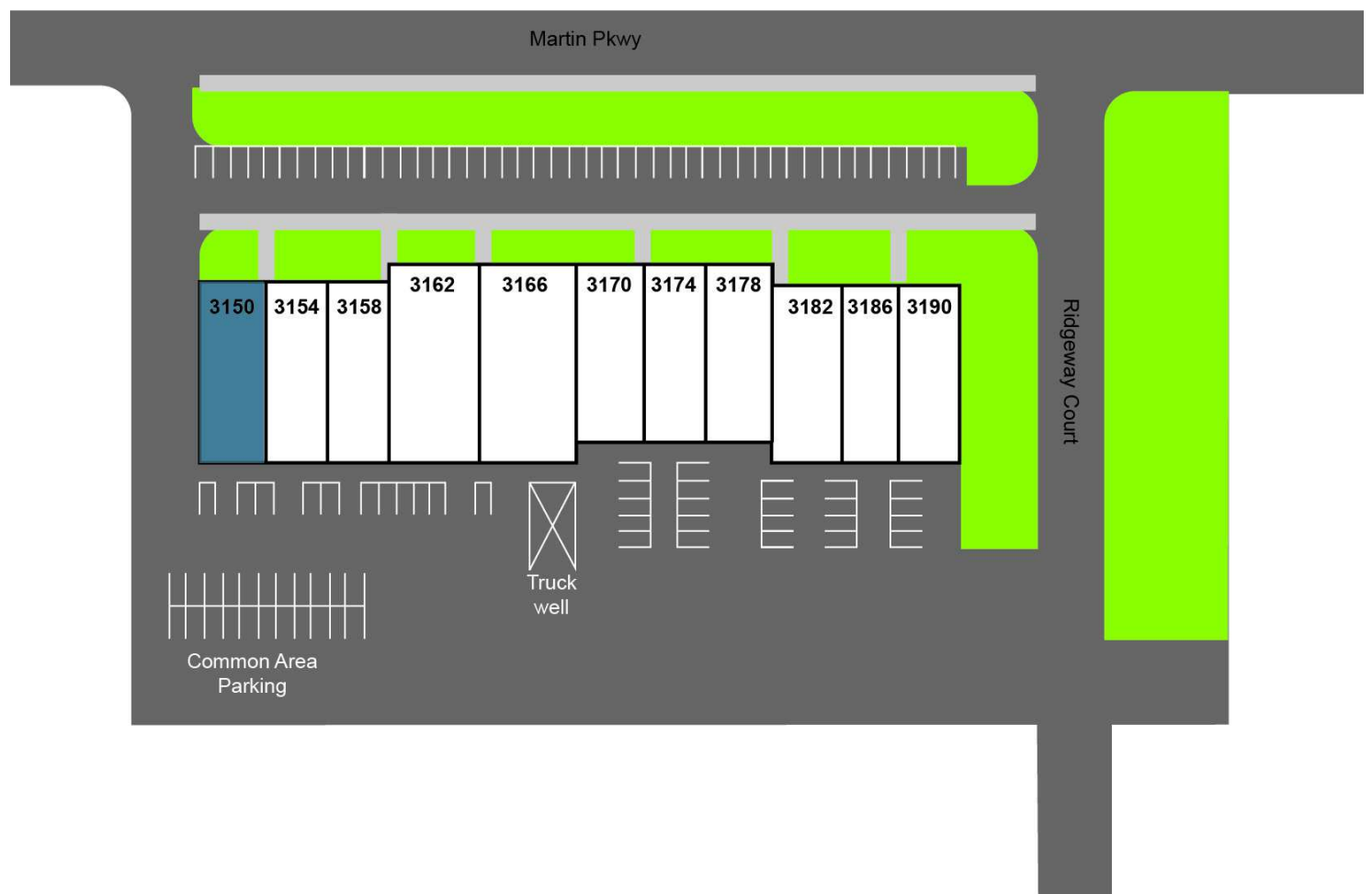
P.A. COMMERCIAL
Corporate & Investment Real Estate

We obtained the information above from sources we believe to be reliable. However, we have not verified its accuracy and make no guarantee, warranty or representation about it. It is submitted subject to the possibility of errors, omissions, change of price, rental or other conditions, prior sale, lease or financing, or withdrawal without notice. We include projections, opinions, assumptions or estimates for example only, and they may not represent current, past or future performance of the property. You and your tax and legal advisors should conduct your own investigation of the property and transaction.

John T. Arthurs PRINCIPAL
D: 248.663.0506 | C: 248.563.3225
johna@pacommercial.com

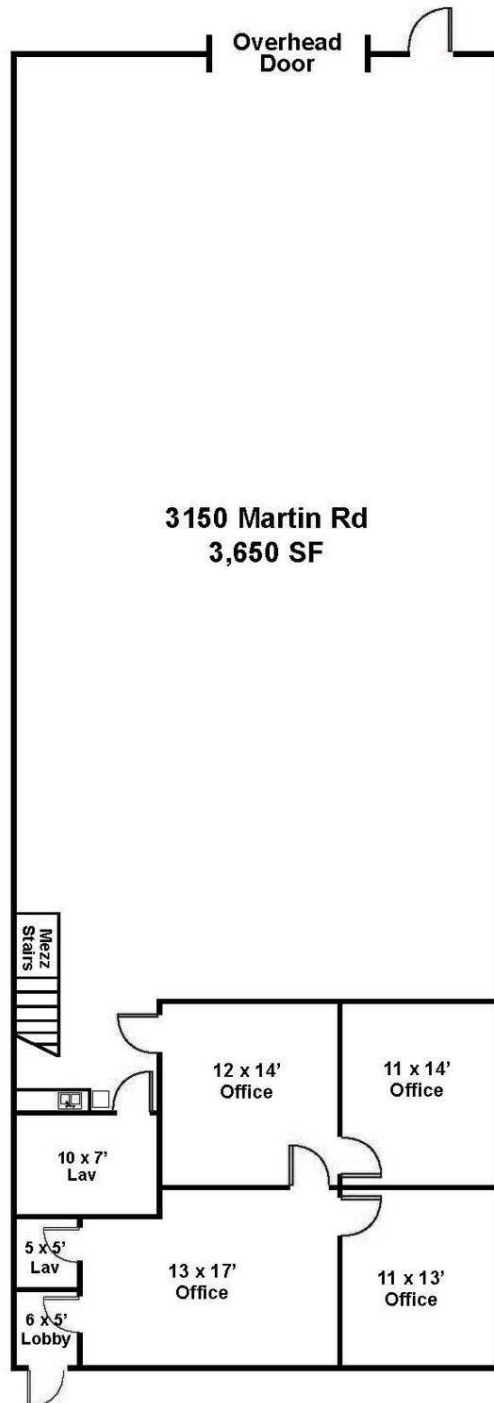
3150 MARTIN RD , COMMERCE TOWNSHIP, MI 48390 // FOR LEASE

SITE PLANS



3150 MARTIN RD , COMMERCE TOWNSHIP, MI 48390 // FOR LEASE

FLOOR PLANS



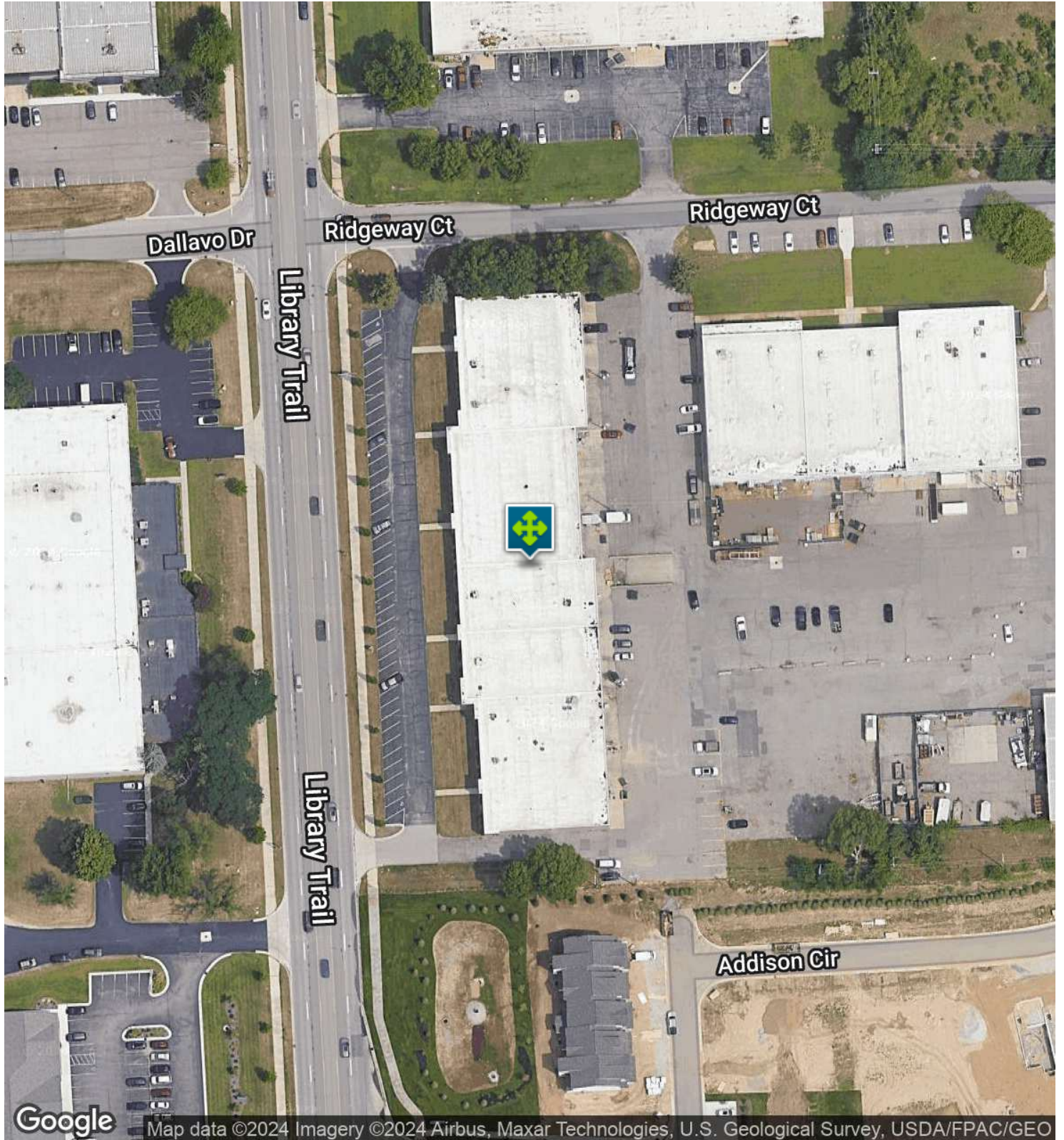
P.A. COMMERCIAL
Corporate & Investment Real Estate

We obtained the information above from sources we believe to be reliable. However, we have not verified its accuracy and make no guarantee, warranty or representation about it. It is submitted subject to the possibility of errors, omissions, change of price, rental or other conditions, prior sale, lease or financing, or withdrawal without notice. We include projections, opinions, assumptions or estimates for example only, and they may not represent current, past or future performance of the property. You and your tax and legal advisors should conduct your own investigation of the property and transaction.

John T. Arthurs PRINCIPAL
D: 248.663.0506 | C: 248.563.3225
johna@pacommercial.com

3150 MARTIN RD , COMMERCE TOWNSHIP, MI 48390 // FOR LEASE

AERIAL MAP



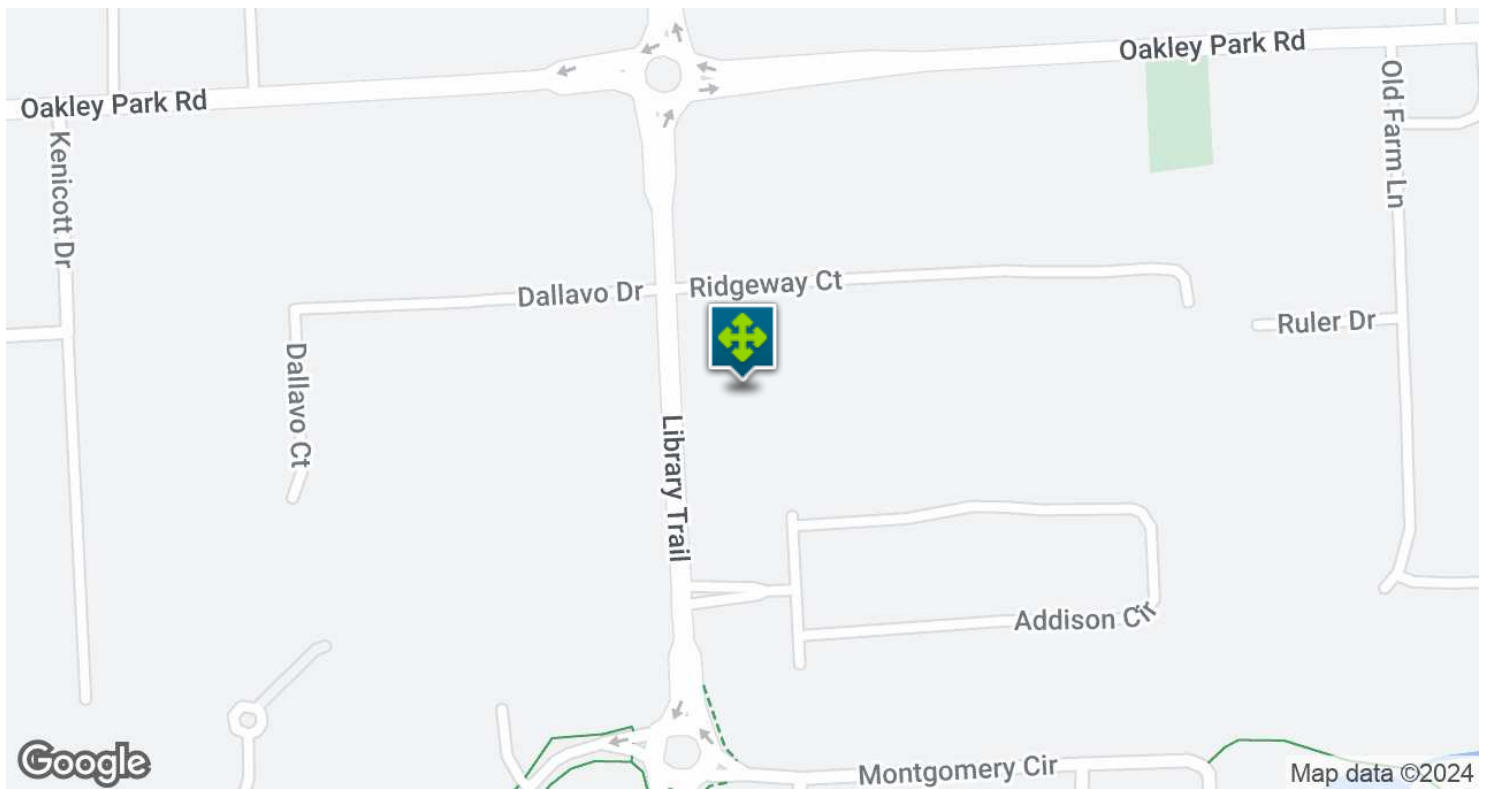
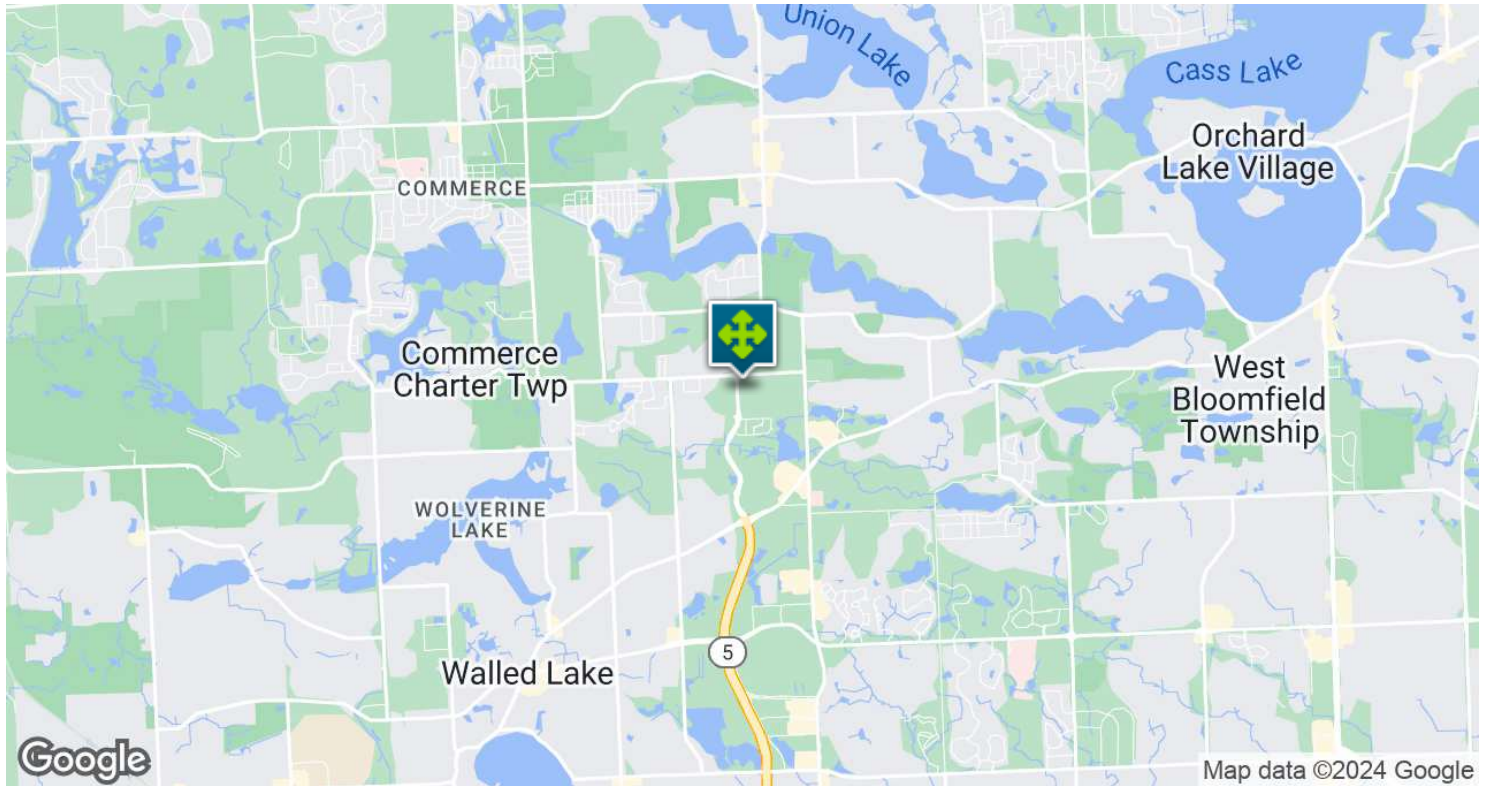
P.A. COMMERCIAL
Corporate & Investment Real Estate

We obtained the information above from sources we believe to be reliable. However, we have not verified its accuracy and make no guarantee, warranty or representation about it. It is submitted subject to the possibility of errors, omissions, change of price, rental or other conditions, prior sale, lease or financing, or withdrawal without notice. We include projections, opinions, assumptions or estimates for example only, and they may not represent current, past or future performance of the property. You and your tax and legal advisors should conduct your own investigation of the property and transaction.

John T. Arthurs PRINCIPAL
D: 248.663.0506 | C: 248.563.3225
johna@pacommercial.com

3150 MARTIN RD , COMMERCE TOWNSHIP, MI 48390 // FOR LEASE

LOCATION MAP

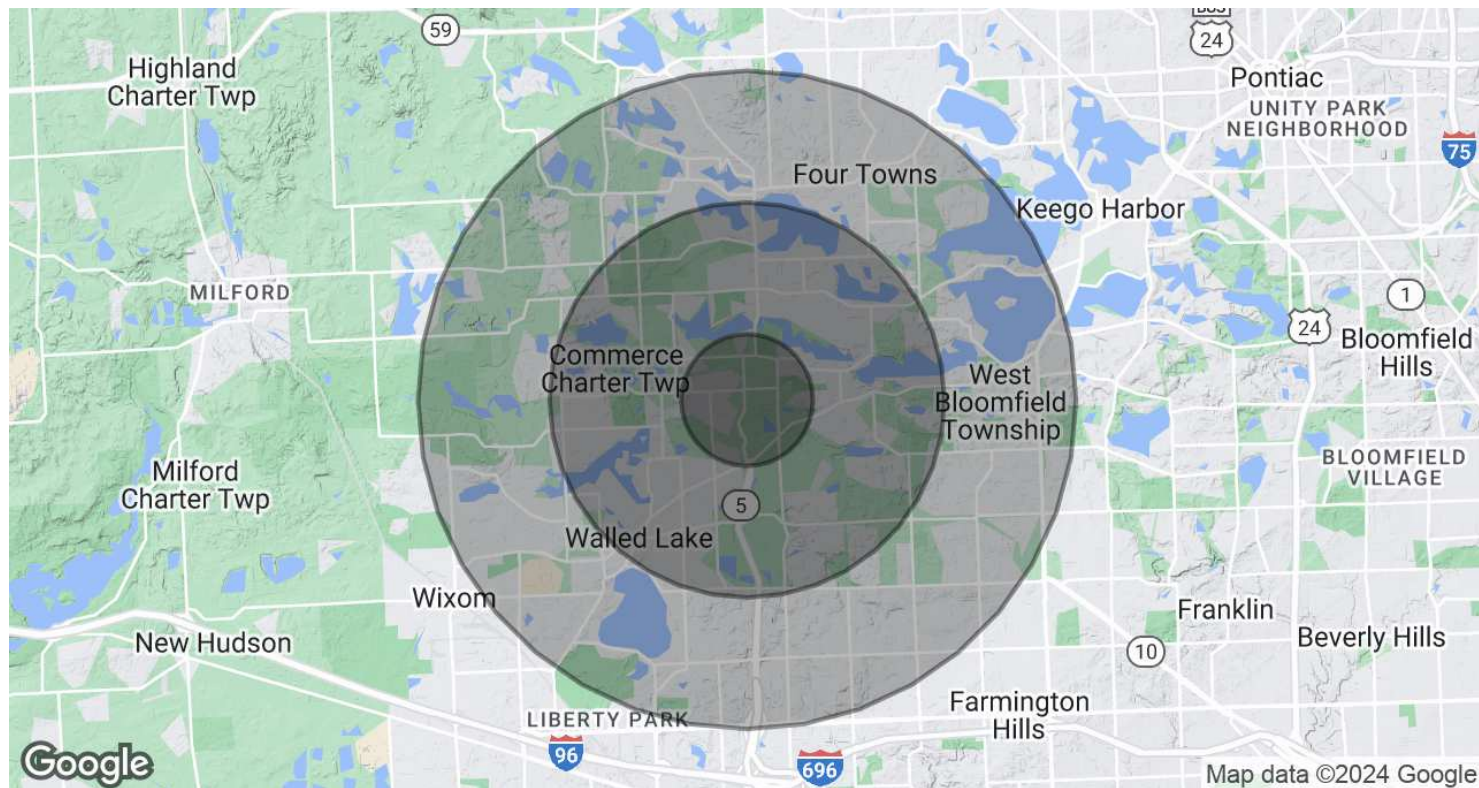


We obtained the information above from sources we believe to be reliable. However, we have not verified its accuracy and make no guarantee, warranty or representation about it. It is submitted subject to the possibility of errors, omissions, change of price, rental or other conditions, prior sale, lease or financing, or withdrawal without notice. We include projections, opinions, assumptions or estimates for example only, and they may not represent current, past or future performance of the property. You and your tax and legal advisors should conduct your own investigation of the property and transaction.

John T. Arthurs PRINCIPAL
D: 248.663.0506 | C: 248.563.3225
johna@pacommercial.com

3150 MARTIN RD , COMMERCE TOWNSHIP, MI 48390 // FOR LEASE

DEMOGRAPHICS MAP & REPORT



| POPULATION | 1 MILE | 3 MILES | 5 MILES |
|----------------------|--------|---------|---------|
| Total Population | 4,281 | 48,705 | 143,354 |
| Average Age | 40.4 | 41.6 | 41.1 |
| Average Age (Male) | 37.3 | 39.7 | 39.9 |
| Average Age (Female) | 42.1 | 42.7 | 42.0 |

| HOUSEHOLDS & INCOME | 1 MILE | 3 MILES | 5 MILES |
|---------------------|-----------|-----------|-----------|
| Total Households | 1,540 | 18,613 | 55,969 |
| # of Persons per HH | 2.8 | 2.6 | 2.6 |
| Average HH Income | \$101,261 | \$101,207 | \$99,501 |
| Average House Value | \$283,882 | \$282,378 | \$265,779 |

* Demographic data derived from 2020 ACS - US Census

3150 MARTIN RD , COMMERCE TOWNSHIP, MI 48390 // FOR LEASE

CONTACT US



FOR MORE INFORMATION, PLEASE CONTACT:



John T. Arthurs
PRINCIPAL

D: 248.663.0506

C: 248.563.3225

johna@pacommercial.com

P.A. Commercial

26555 Evergreen Road, Suite 1500
Southfield, MI 48076

P: 248.358.0100

F: 248.358.5300

pacommercial.com

Follow Us!



P.A. COMMERCIAL
Corporate & Investment Real Estate

We obtained the information above from sources we believe to be reliable. However, we have not verified its accuracy and make no guarantee, warranty or representation about it. It is submitted subject to the possibility of errors, omissions, change of price, rental or other conditions, prior sale, lease or financing, or withdrawal without notice. We include projections, opinions, assumptions or estimates for example only, and they may not represent current, past or future performance of the property. You and your tax and legal advisors should conduct your own investigation of the property and transaction.