

7.86 ACRES  
LAND



FOR SALE



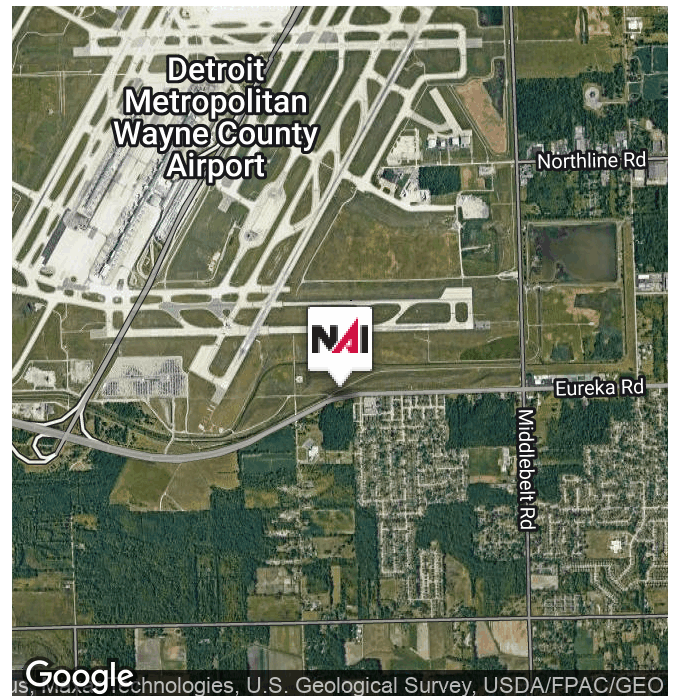
PRIME DEVELOPMENT LAND NEXT TO DETROIT METROPOLITAN AIRPORT!

30925 Eureka Rd

Romulus, Michigan 48174

### Property Highlights

- 7.86 Acres Available For Sale
- Well located on Eureka Road east of I-275, Exit 15, southern boundary of Detroit Metro Airport
- Prime development opportunity for residential, future airport expansion. And possible rezoning for commercial or industrial
- Zoning: R1A-S.F. (Residential)
- Electric, sanitary sewer, and water at the street
- 650' Frontage on Eureka Rd
- Parcel IDs: 80-138-99-0003-004, 80-138-99-0003-005, 80-138-99-0003-006



**NAI Farbman**

Commercial Real Estate Services, Worldwide.

[www.naifarbman.com](http://www.naifarbman.com)

**Brad Margolis**

Vice President | 248.351.4367

[bmargolis@farbman.com](mailto:bmargolis@farbman.com)

NO WARRANTY, EXPRESS OR IMPLIED, IS MADE AS TO THE ACCURACY OF THE INFORMATION CONTAINED HEREIN. THIS INFORMATION IS SUBMITTED SUBJECT TO ERRORS, OMISSIONS, CHANGE OF PRICE, RENTAL OR OTHER CONDITIONS, WITHDRAWAL WITHOUT NOTICE, AND IS SUBJECT TO ANY SPECIAL LISTING CONDITIONS IMPOSED BY OUR PRINCIPALS. COOPERATING BROKERS, BUYERS, TENANTS AND OTHER PARTIES WHO RECEIVE THIS DOCUMENT SHOULD NOT RELY ON IT, BUT SHOULD USE IT AS A STARTING POINT OF ANALYSIS, AND SHOULD INDEPENDENTLY CONFIRM THE ACCURACY OF THE INFORMATION CONTAINED HEREIN THROUGH A DUE DILIGENCE REVIEW OF THE BOOKS, RECORDS, FILES AND DOCUMENTS THAT CONSTITUTE RELIABLE SOURCES OF THE INFORMATION DESCRIBED HEREIN. LOGOS ARE FOR IDENTIFICATION PURPOSES ONLY AND MAY BE TRADEMARKS OF THEIR RESPECTIVE COMPANIES. NAI Farbman, INC. CA BRE LIC. #01990696.

7.86 ACRES  
LAND



FOR SALE



**NAI Farberman**

Commercial Real Estate Services, Worldwide.  
www.naifarberman.com

**Brad Margolis**  
Vice President | 248.351.4367  
bmargolis@farberman.com

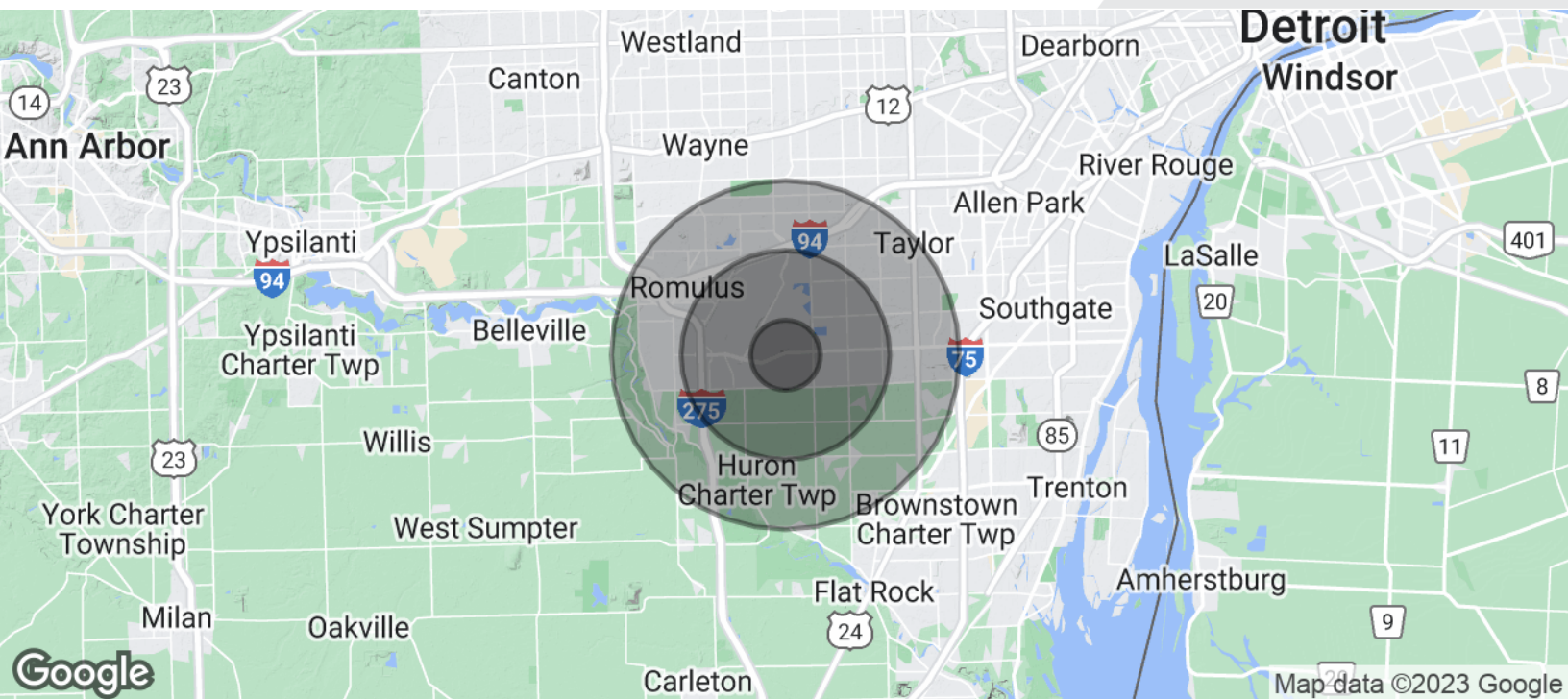
NO WARRANTY, EXPRESS OR IMPLIED, IS MADE AS TO THE ACCURACY OF THE INFORMATION CONTAINED HEREIN. THIS INFORMATION IS SUBMITTED SUBJECT TO ERRORS, OMISSIONS, CHANGE OF PRICE, RENTAL OR OTHER CONDITIONS, WITHDRAWAL WITHOUT NOTICE, AND IS SUBJECT TO ANY SPECIAL LISTING CONDITIONS IMPOSED BY OUR PRINCIPALS. COOPERATING BROKERS, BUYERS, TENANTS AND OTHER PARTIES WHO RECEIVE THIS DOCUMENT SHOULD NOT RELY ON IT, BUT SHOULD USE IT AS A STARTING POINT OF ANALYSIS, AND SHOULD INDEPENDENTLY CONFIRM THE ACCURACY OF THE INFORMATION CONTAINED HEREIN THROUGH A DUE DILIGENCE REVIEW OF THE BOOKS, RECORDS, FILES AND DOCUMENTS THAT CONSTITUTE RELIABLE SOURCES OF THE INFORMATION DESCRIBED HEREIN. LOGOS ARE FOR IDENTIFICATION PURPOSES ONLY AND MAY BE TRADEMARKS OF THEIR RESPECTIVE COMPANIES. NAI Farberman, INC. CA BRE LIC. #01990696.



# 7.86 ACRES LAND



## FOR SALE



POPULATION	1 MILE	3 MILES	5 MILES
Total Population	2,409	17,858	68,164
Average Age	42.1	34.4	40.2
Average Age (Male)	41.0	31.2	37.2
Average Age (Female)	41.3	34.6	41.6
HOUSEHOLDS & INCOME	1 MILE	3 MILES	5 MILES
Total Households	981	6,890	28,596
# of Persons per HH	2.5	2.6	2.4
Average HH Income	\$63,764	\$57,754	\$64,005
Average House Value	\$96,407	\$107,836	\$127,928

\* Demographic data derived from 2020 ACS - US Census

**NAI Farbman**

Commercial Real Estate Services, Worldwide.  
www.naifarbman.com

**Brad Margolis**  
Vice President | 248.351.4367  
bmargolis@farbman.com

NO WARRANTY, EXPRESS OR IMPLIED, IS MADE AS TO THE ACCURACY OF THE INFORMATION CONTAINED HEREIN. THIS INFORMATION IS SUBMITTED SUBJECT TO ERRORS, OMISSIONS, CHANGE OF PRICE, RENTAL OR OTHER CONDITIONS, WITHDRAWAL WITHOUT NOTICE, AND IS SUBJECT TO ANY SPECIAL LISTING CONDITIONS IMPOSED BY OUR PRINCIPALS. COOPERATING BROKERS, BUYERS, TENANTS AND OTHER PARTIES WHO RECEIVE THIS DOCUMENT SHOULD NOT RELY ON IT, BUT SHOULD USE IT AS A STARTING POINT OF ANALYSIS, AND SHOULD INDEPENDENTLY CONFIRM THE ACCURACY OF THE INFORMATION CONTAINED HEREIN THROUGH A DUE DILIGENCE REVIEW OF THE BOOKS, RECORDS, FILES AND DOCUMENTS THAT CONSTITUTE RELIABLE SOURCES OF THE INFORMATION DESCRIBED HEREIN. LOGOS ARE FOR IDENTIFICATION PURPOSES ONLY AND MAY BE TRADEMARKS OF THEIR RESPECTIVE COMPANIES. NAI Farbman, INC. CA BRE LIC. #01990696.