

Medical/Pediatric For Lease
Office Building
 4,162 SF | \$18.75 SF/yr

Medical/Pediatric Office Building

147 Oakland Ln
Maynardville, TN 37807

Property Highlights

- Medical/Pediatric build-out
- Also available for sale at \$595,000
- Situated on beautiful 4.05-acre tract
- Convenient to Maynardville Hwy arterial
- Great opportunity for additional expansion
- Current occupant lease expires Nov. 30 2024
- Developable land for more Office or other use

For more information

Sam Tate, CCIM

O: 865 777 3035 | C: 865 806 6517
 state@koellamoore.com

Ryan McElveen, MBA

O: 865 531 6400 | C: 865 567 0232
 rmcelveen@koellamoore.com

OFFERING SUMMARY

Available SF	4,162 SF
Lease Rate	\$18.75 SF/yr (NNN)
Lot Size	4.05 Acres
Zoning	B-2
Year Built	2008

DEMOGRAPHICS

Stats	Population	Avg. HH Income
5 Miles	11,294	\$64,109
10 Miles	38,832	\$66,387
Knox Metro	1,172,792	\$77,766

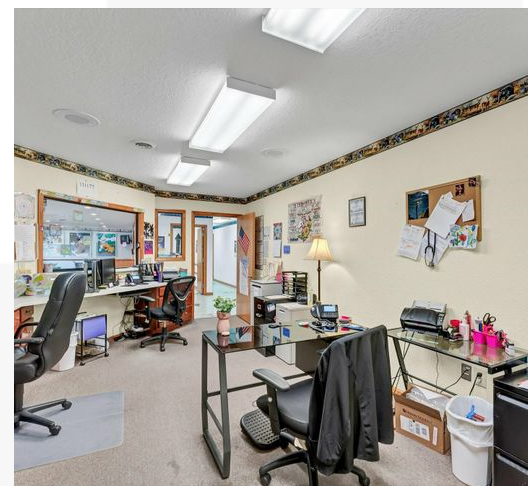
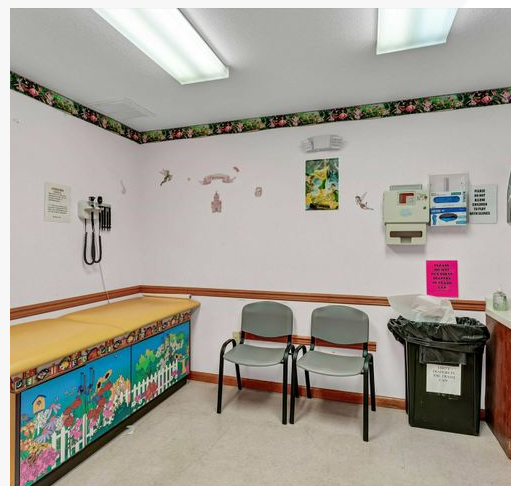
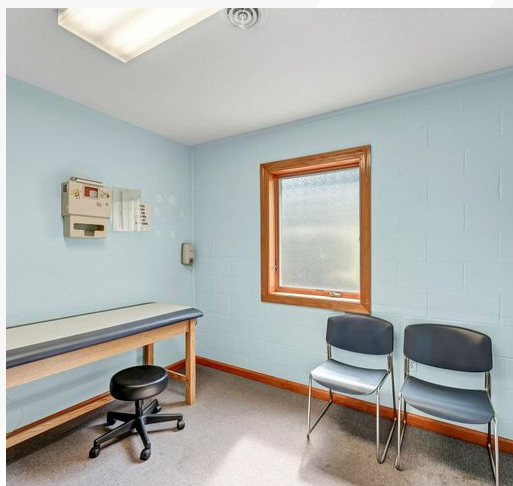
Medical/Pediatric For Lease

Office Building

4,162 SF | \$18.75 SF/yr



Additional Photos



Floorplan



Measurements Are Calculated By Cubicasa Technology. Deemed Highly Reliable But Not Guaranteed.

Medical/Pediatric For Lease

Office Building

4,162 SF | \$18.75 SF/yr

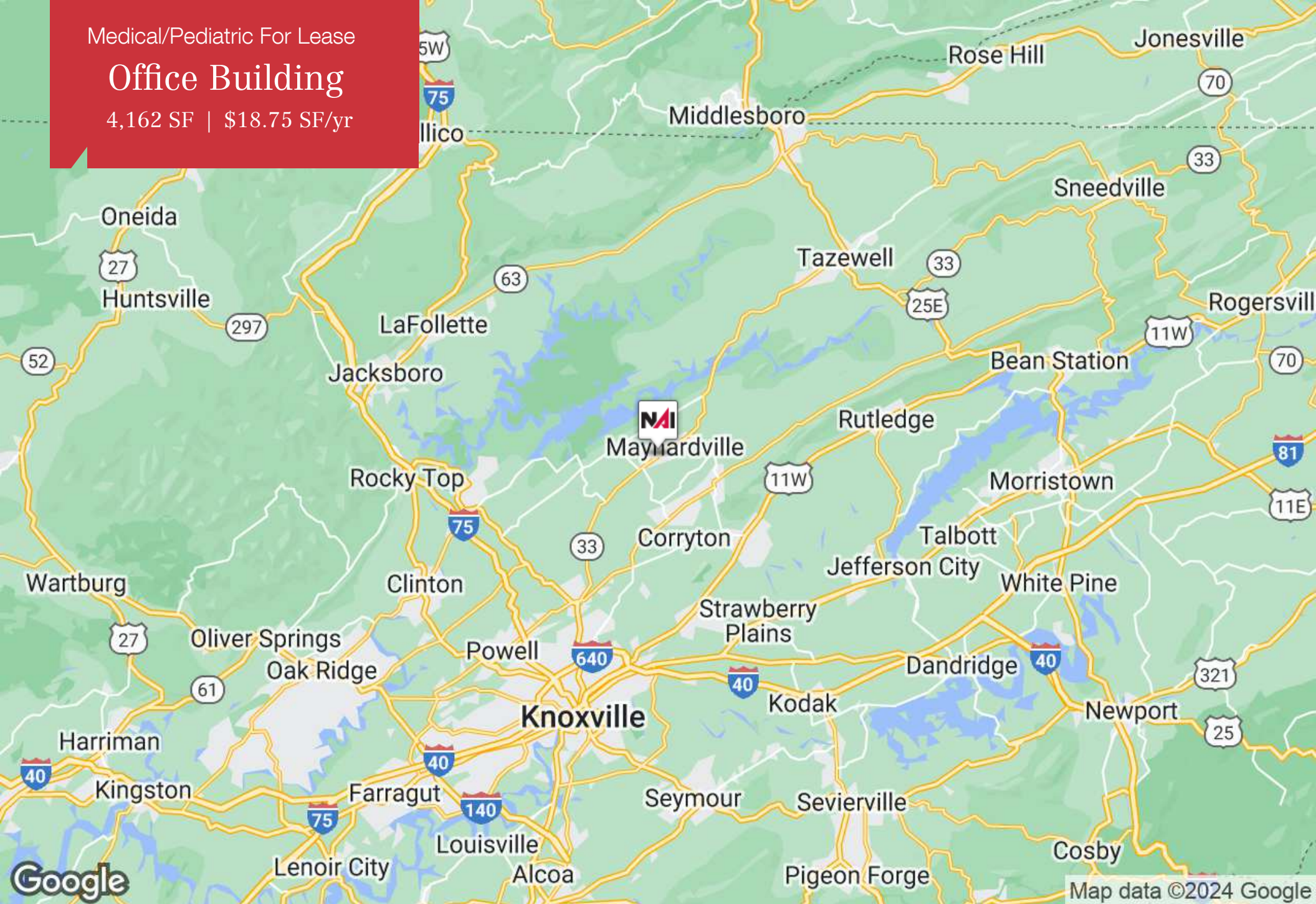
Maynardville Hwy

4.05 Acres

Medical/Pediatric For Lease

Office Building

4,162 SF | \$18.75 SF/yr



Medical/Pediatric For Lease

Office Building

4,162 SF | \$18.75 SF/yr



SAM TATE, CCIM

Senior Advisor

state@koellamoore.com

Direct: 865.777.3035 | Cell: 865.806.6517

TN #207699

PROFESSIONAL BACKGROUND

Sam Tate serves as a Senior Advisor at NAI Koella | RM Moore having started his real estate career in 1980 and specializes in the sale and leasing of commercial properties. Sam is also a member of East TN CCIM.

Selected clientele includes: U.S. Department of Energy, Boeing Realty Corporation, First Tennessee Bank, Tennova, Charter Communications, Clayton Homes, The Bosch Group, Sanford, Hiwassee College, Friehtliner Corporation, Oak Ridge Associated Universities, Walgreen Company, Pitney Bowes, U.S. Postal Service, BASF, Georgia-Pacific, Nova Information Systems, SunTrust Bank, Key Safety Systems, Kindred Healthcare, Lucent Technologies, Interstate Brands Corporation, Jones Brothers, Cumberland Materials, International Paper, Mastec North America, Advance Auto, Food Lion, Robertshaw Industries, Universal Tire, The Venator Group, Air Products, Eckerd, Girl Scouts of the Southern Appalachians, Aisin World Corporation of America, Cumberland Materials, Aaron Rents, Michigan Bulb Company, and Magneco/Metrel.

EDUCATION

B.S.B.A., Real Estate & Urban Development, University of Tennessee, Knoxville, 1981

CCIM Institute, Certified Commercial Investment Member

NAI Koella | RM Moore
255 N Peters Road, Suite 101
Knoxville, TN 37923
865.531.6400

Medical/Pediatric For Lease

Office Building

4,162 SF | \$18.75 SF/yr



RYAN MCELVEEN, MBA

Advisor

rmcelveen@koellamoore.com

Direct: 865.531.6400 | Cell: 865.567.0232

CalDRE #01850467

PROFESSIONAL BACKGROUND

Ryan McElveen serves as an Advisor at NAI Koella | RM Moore. With 14 years as a real estate broker, McElveen has an extensive background in sales, leasing, and creative financing of commercial properties, while predominantly focused on larger scale marketing of property.

Ryan began his career in 2008 as a licensed sole proprietor broker in California after finishing his baccalaureate at California State University, Northridge, with degrees in Real Estate and Finance. In 2010, after incorporating his brokerage and obtaining a Master's in Business Administration from Pepperdine University, Ryan had a team of 15 to 20 salespersons actively engaging clients and was focused primarily on acting as principal in seller-financed real estate transactions in California, Arizona, and Washington.

By 2015, Ryan had expanded his brokerage into Nevada and Washington and was actively pursuing transactions in each state until he joined MGR Real Estate in 2018 as a Broker Associate to better focus his talents and partner with regional commercial real estate brokers in California. In 2020, Ryan moved to Tennessee to focus on becoming a part of Celebrate Recovery at Faith Promise and to be closer to his father and family in Kingston. He later became affiliated with NAI Koella | RM Moore the following year. Previously Licensed Real Estate Broker in Nevada, Washington, and actively licensed in California (DRE #01850467)

EDUCATION

M.B.A., Pepperdine University, 2010

B.S.B.A, Real Estate & Finance, California State University, Northridge, 2008

NAI Koella | RM Moore
255 N Peters Road, Suite 101
Knoxville, TN 37923
865.531.6400