



4573 Everhard Rd NW
Canton, Ohio 44720

SF AVAILABLE	2,500/SF
LEASE RATE	\$14.50/SF
LEASE TYPE	NNN (\$2.25/SF)
YEAR BUILT	1977
PARCEL	1610913
ACRES	1.47
ZONING	B3
TRAFFIC COUNT	17,939 AADT

SF	SF/Rate	SF/NNN	Monthly
2,500	\$14.50	\$2.25	\$3,489.58



- Recently renovated 2,500/SF suite for lease.
- Current use is medical but could be used as general office as well.
- Great Belden Village location close to I-77, restaurants, and retail.
- Fantastic signage on Everhard Rd.

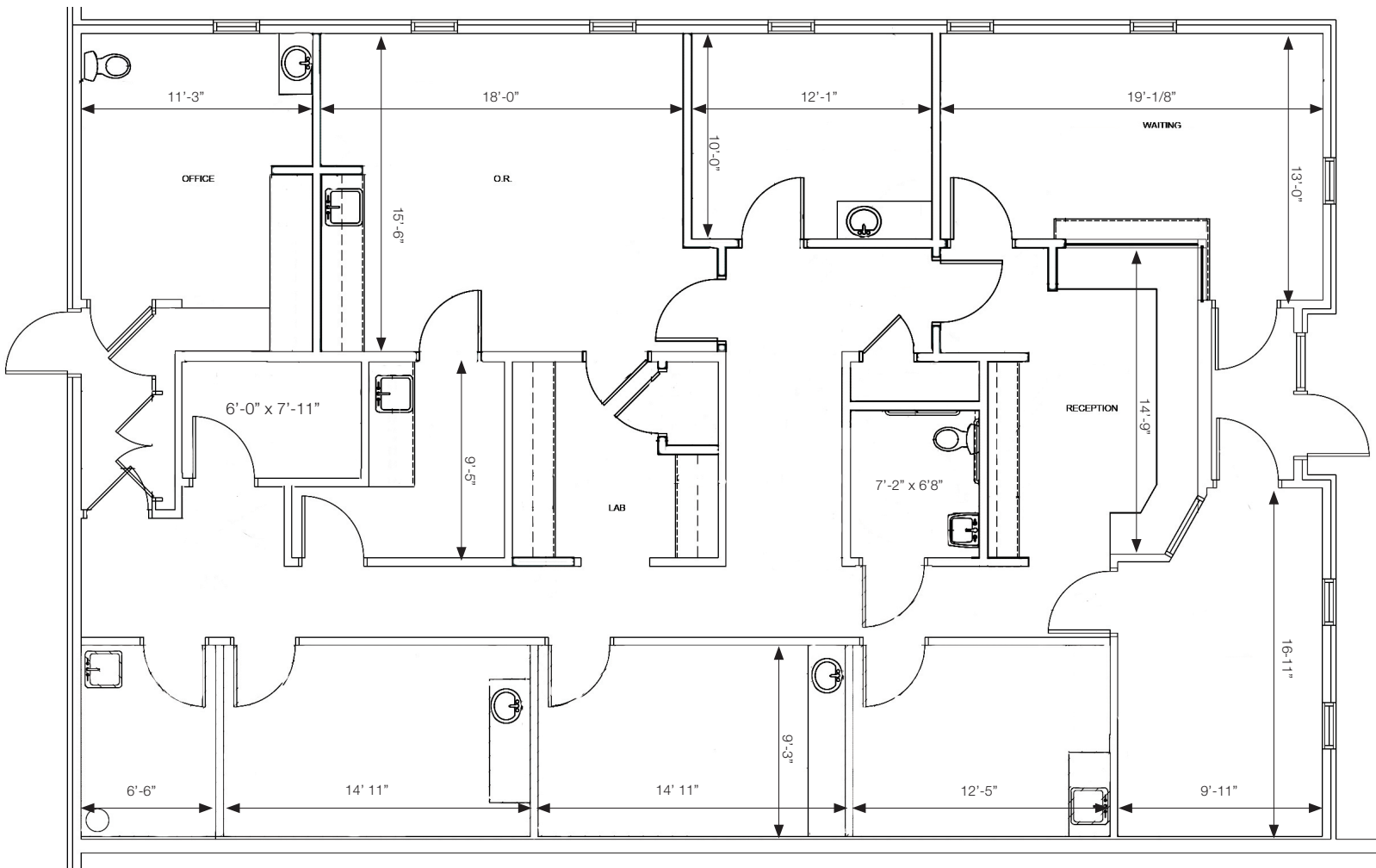
Dan Spring, SIOR

P 330 497 6249
dan@naispring.com

Kelly Sober, CCIM

P 330 497 9837
kelly@naispring.com

FLOOR PLAN

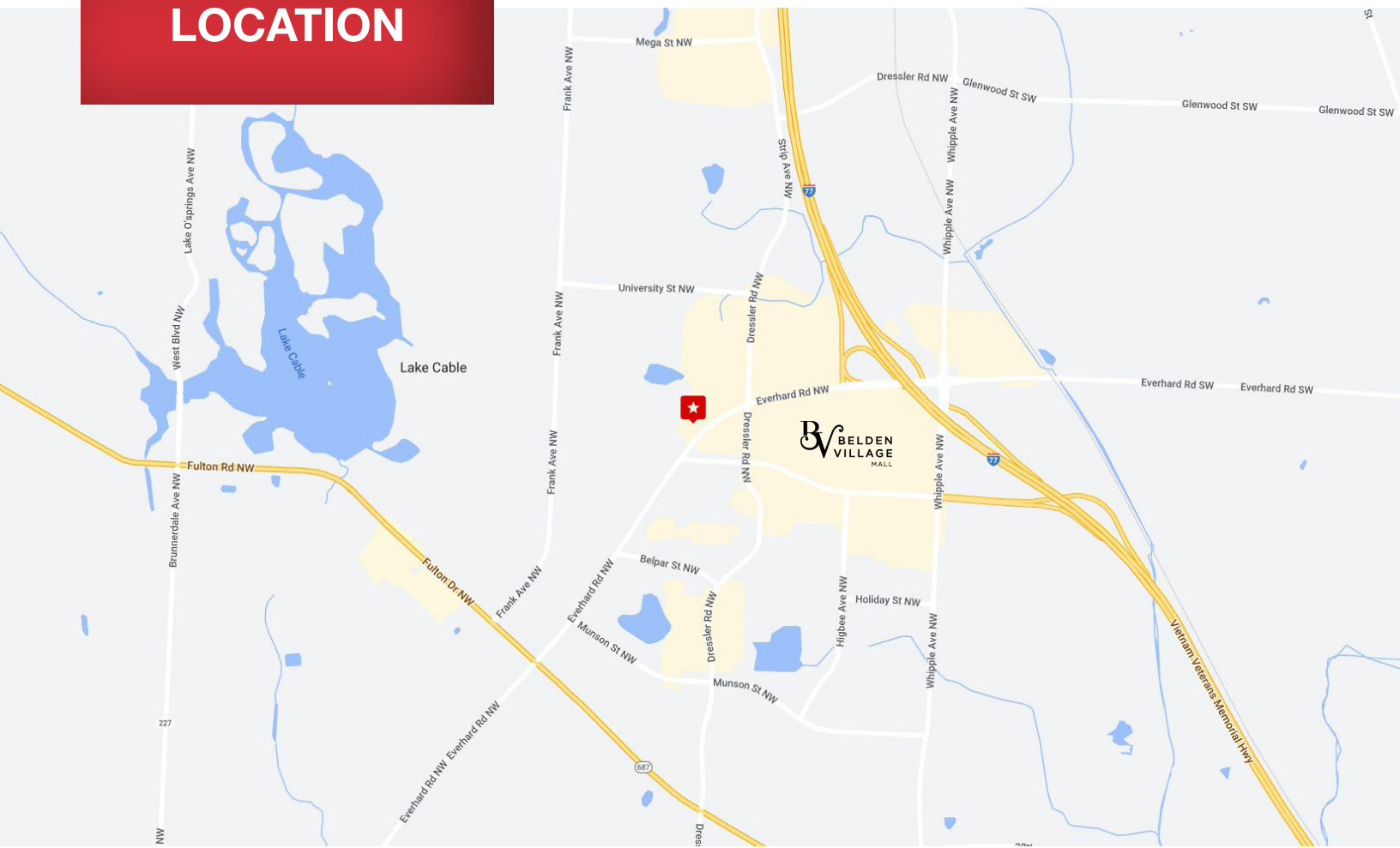


*DIMENSIONS ARE APPROXIMATE. THIS INFORMATION IS FROM RELIABLE SOURCES BUT IS NOT GUARANTEED AND IS SUBJECT TO CHANGE

NO WARRANTY OR REPRESENTATION, EXPRESS OR IMPLIED, IS MADE AS TO THE ACCURACY OF THE INFORMATION CONTAINED HEREIN, AND THE SAME IS SUBMITTED SUBJECT TO ERRORS, OMISSIONS, CHANGE OF PRICE, RENTAL OR OTHER CONDITIONS, PRIOR SALE, LEASE OR FINANCING, OR WITHDRAWAL WITHOUT NOTICE, AND OF ANY SPECIAL LISTING CONDITIONS IMPOSED BY OUR PRINCIPALS NO WARRANTIES OR REPRESENTATIONS ARE MADE AS TO THE CONDITION OF THE PROPERTY OR ANY HAZARDS CONTAINED THEREIN ARE ANY TO BE IMPLIED.

8234 Pittsburg Ave NW
North Canton, OH 44720
+1 330 966 8800
naispring.com

LOCATION



NO WARRANTY OR REPRESENTATION, EXPRESS OR IMPLIED, IS MADE AS TO THE ACCURACY OF THE INFORMATION CONTAINED HEREIN, AND THE SAME IS SUBMITTED SUBJECT TO ERRORS, OMISSIONS, CHANGE OF PRICE, RENTAL OR OTHER CONDITIONS, PRIOR SALE, LEASE OR FINANCING, OR WITHDRAWAL WITHOUT NOTICE, AND OF ANY SPECIAL LISTING CONDITIONS IMPOSED BY OUR PRINCIPALS NO WARRANTIES OR REPRESENTATIONS ARE MADE AS TO THE CONDITION OF THE PROPERTY OR ANY HAZARDS CONTAINED THEREIN ARE ANY TO BE IMPLIED.

8234 Pittsburg Ave NW
North Canton, OH 44720
+1 330 966 8800
naispring.com