

606 White Sulphur Road Land For Sale

Gainesville, GA 30501



Property Description

Prime interstate pad available on .60 acres with space for 1600-2000 SF building & drive-thru, located at heavy traffic intersection of Jesse Jewell Parkway and 985. Build ready with surface parking and underground detention. Zoned G-B, City of Gainesville, Hall County.

Property Highlights

- Newly Opened Retailers Nearby - Chipotle, Chick-fil-A, Arby's, Shane's Rib Shack, Express Oil Change, Sherwin-Williams
- Located just minutes from Northeast Georgia Medical Center, a 557-bed hospital
- High-Traffic Intersection

OFFERING SUMMARY

Sale Price:	\$850,000
Lot Size:	0.6 Acres

DEMOGRAPHICS	1 MILE	3 MILES	5 MILES
Total Households	883	11,172	22,540
Total Population	2,258	30,230	60,752
Average HH Income	\$58,767	\$60,807	\$60,876

DANNY GLUSMAN

BROKER

404.465.3941

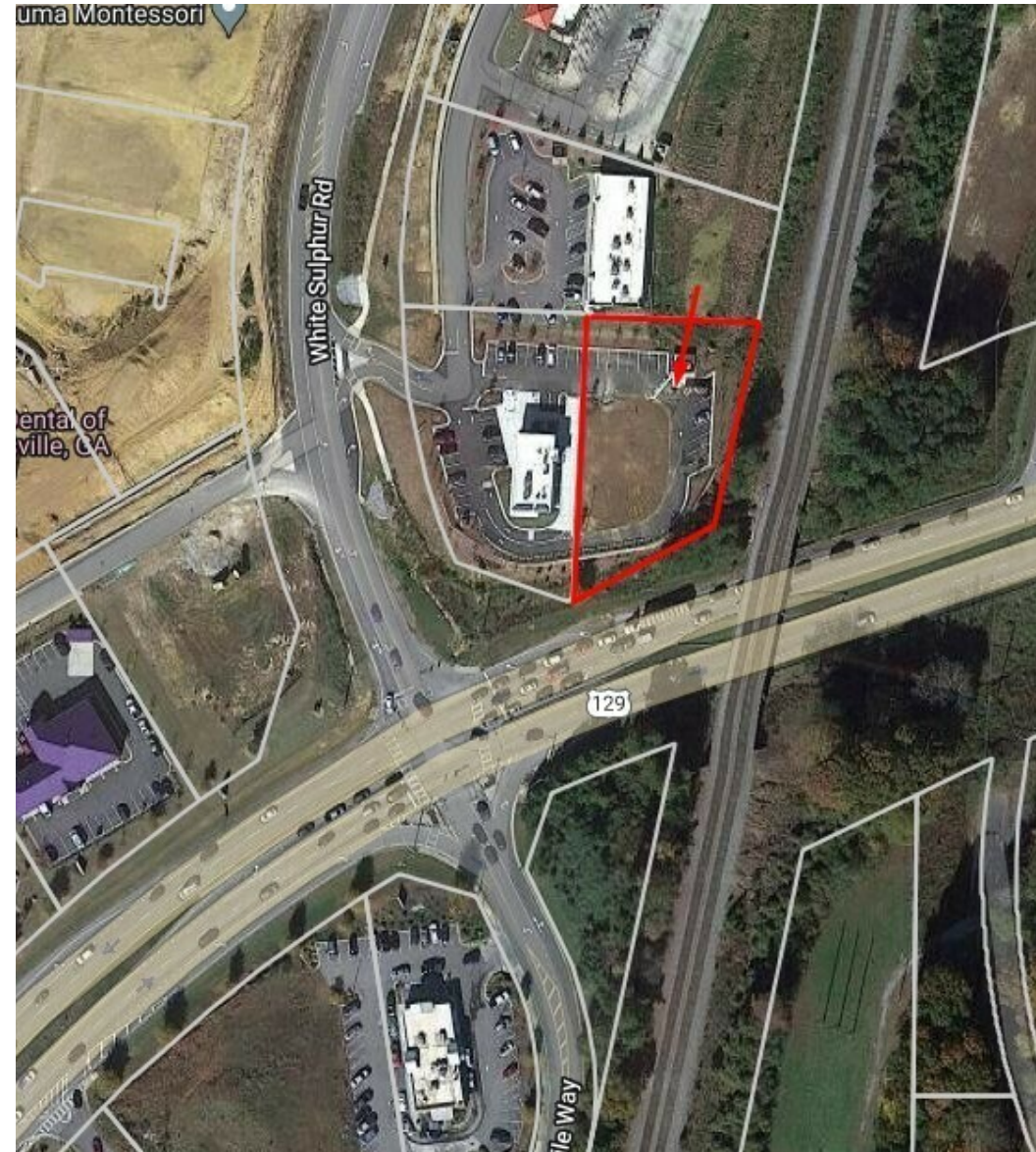
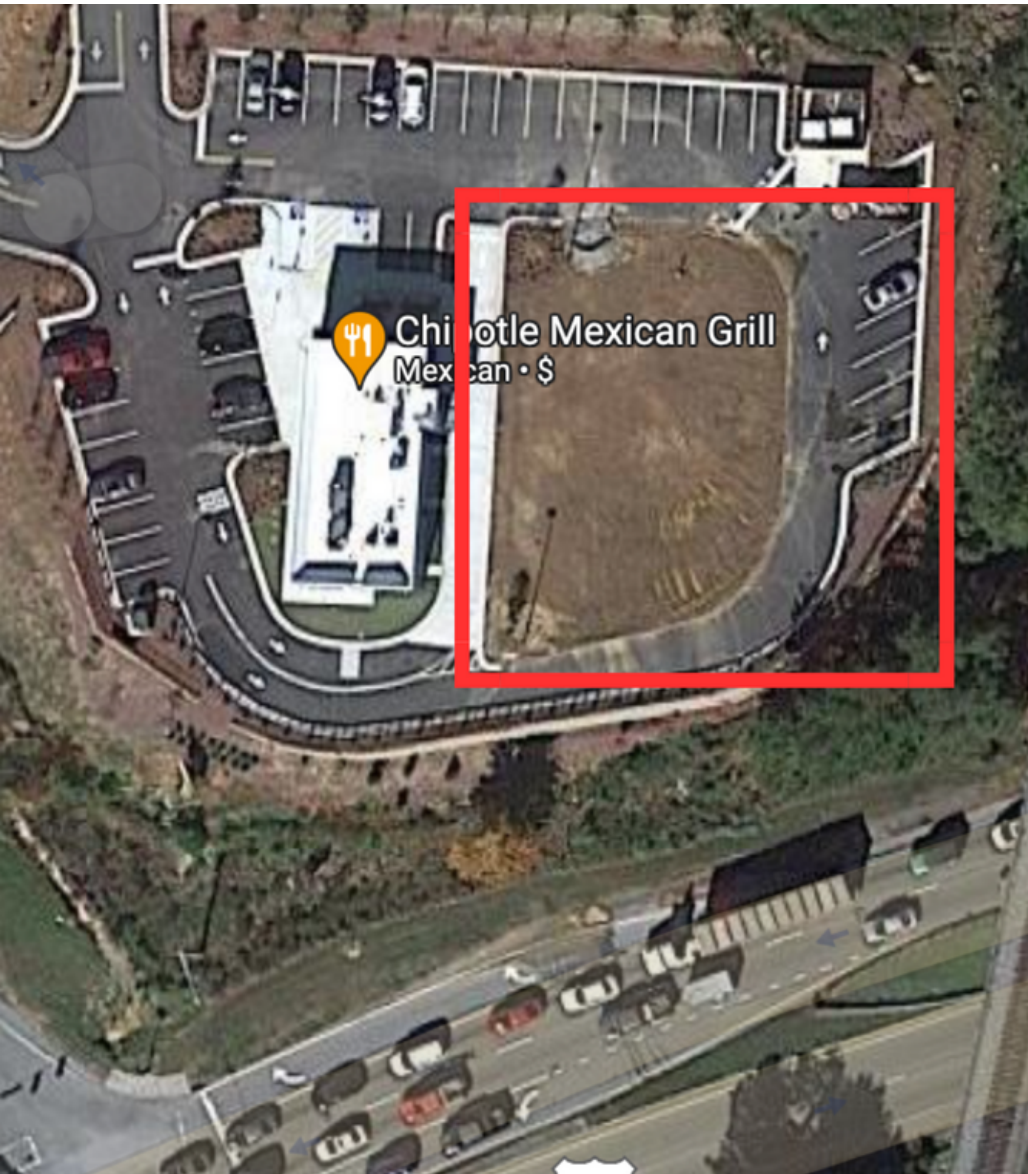
dglusman@widespreadgroup.com

WIDESPREAD
COMMERCIAL GROUP

widespreadgroup.com

606 White Sulphur Road Land For Sale

Gainesville, GA 30501



DANNY GLUSMAN

BROKER

404.465.3941

dglusman@widespreadgroup.com

WIDESPREAD
COMMERCIAL GROUP

widespreadgroup.com

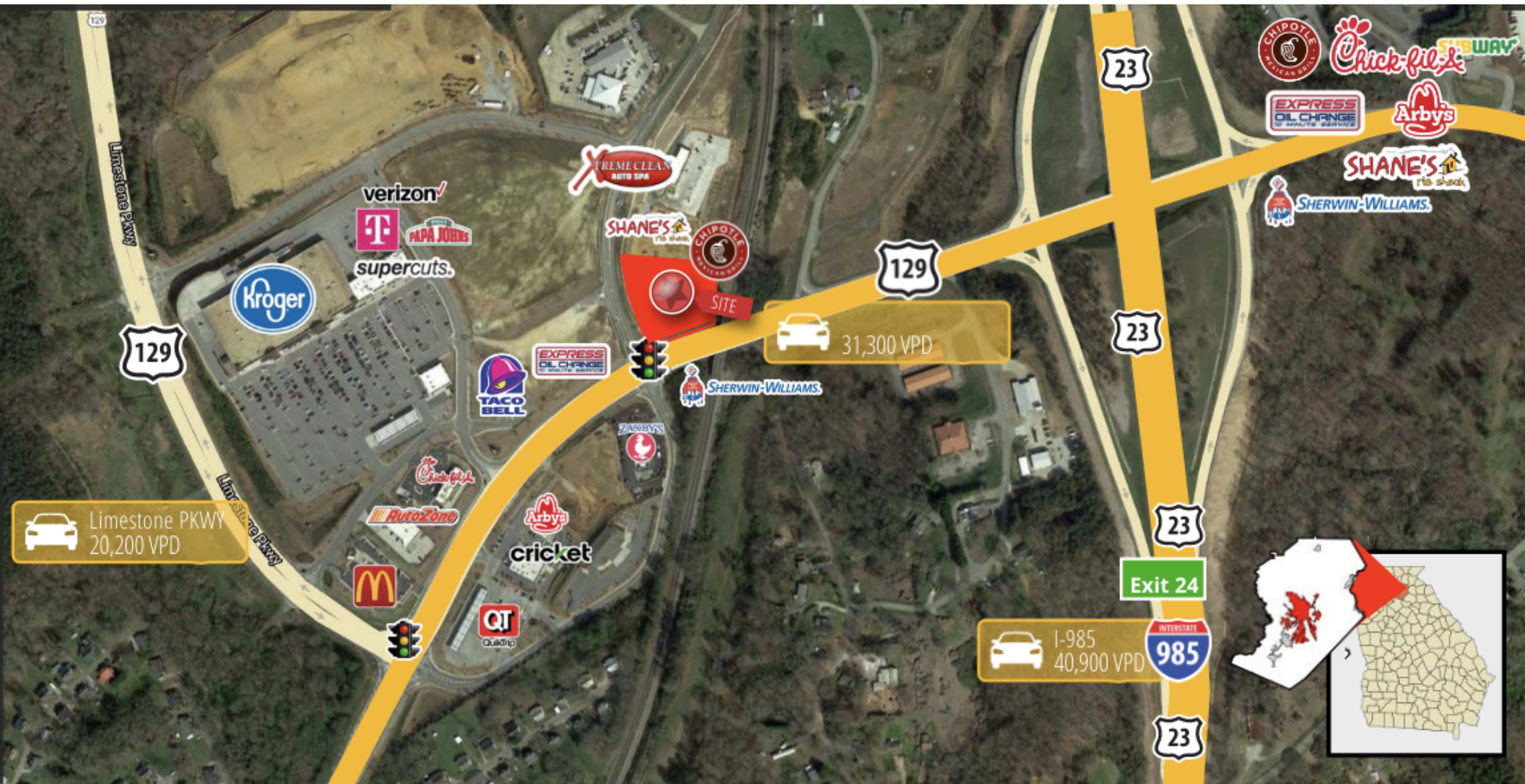
Gainesville, GA 30501



widespreadgroup.com

606 White Sulphur Road Land For Sale

Gainesville, GA 30501



DANNY GLUSMAN

BROKER

404.465.3941

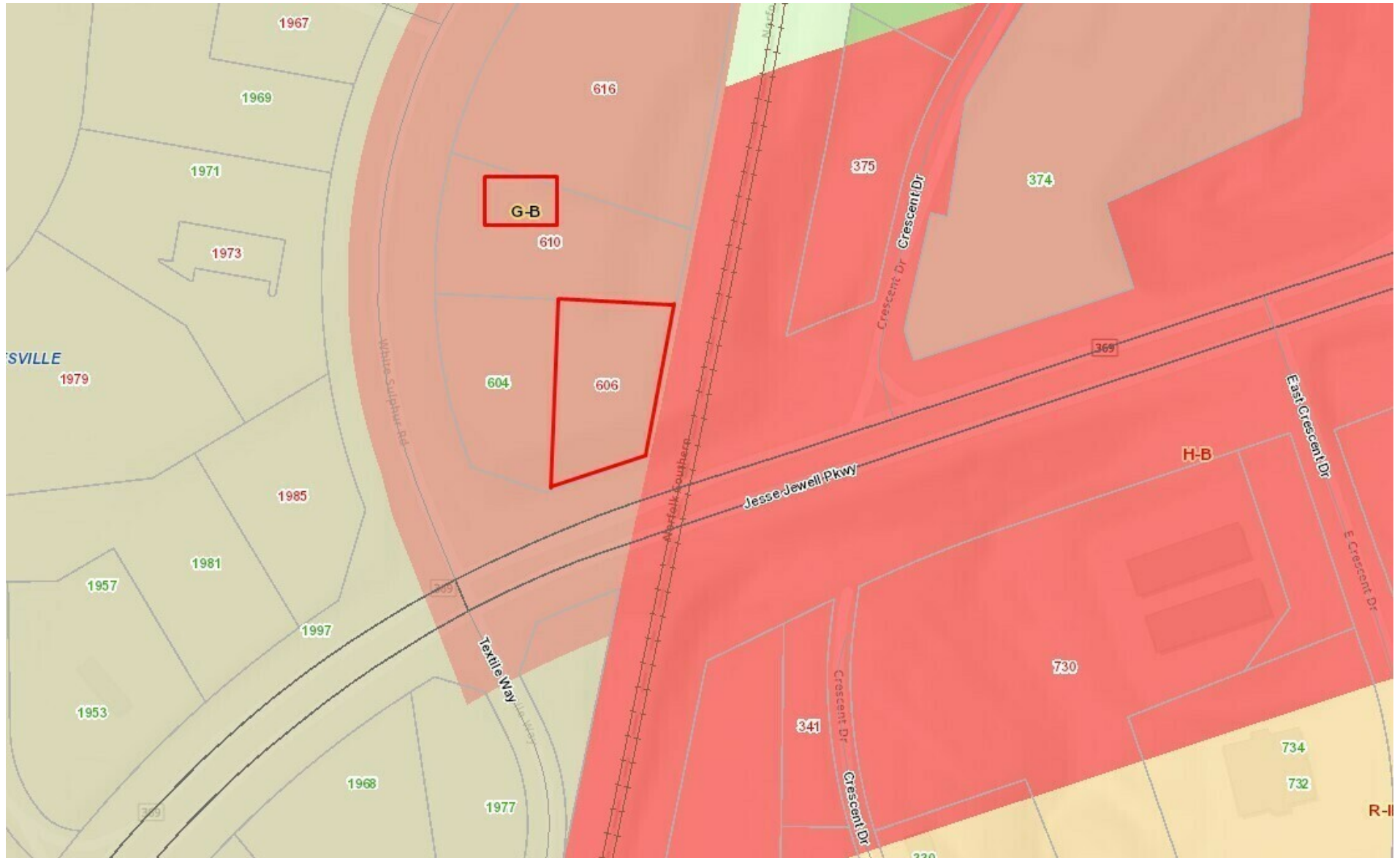
dglusman@widespreadgroup.com

WIDESPREAD
COMMERCIAL GROUP

widespreadgroup.com

606 White Sulphur Road Land For Sale

Gainesville, GA 30501



DANNY GLUSMAN

BROKER

404.465.3941

dglusman@widespreadgroup.com

WIDESPREAD
COMMERCIAL GROUP

widespreadgroup.com

606 White Sulphur Road Land For Sale

Gainesville, GA 30501



DANNY GLUSMAN

BROKER

404.465.3941

dglusman@widespreadgroup.com

WIDESPREAD
COMMERCIAL GROUP

widespreadgroup.com

606 White Sulphur Road Land For Sale

Gainesville, GA 30501



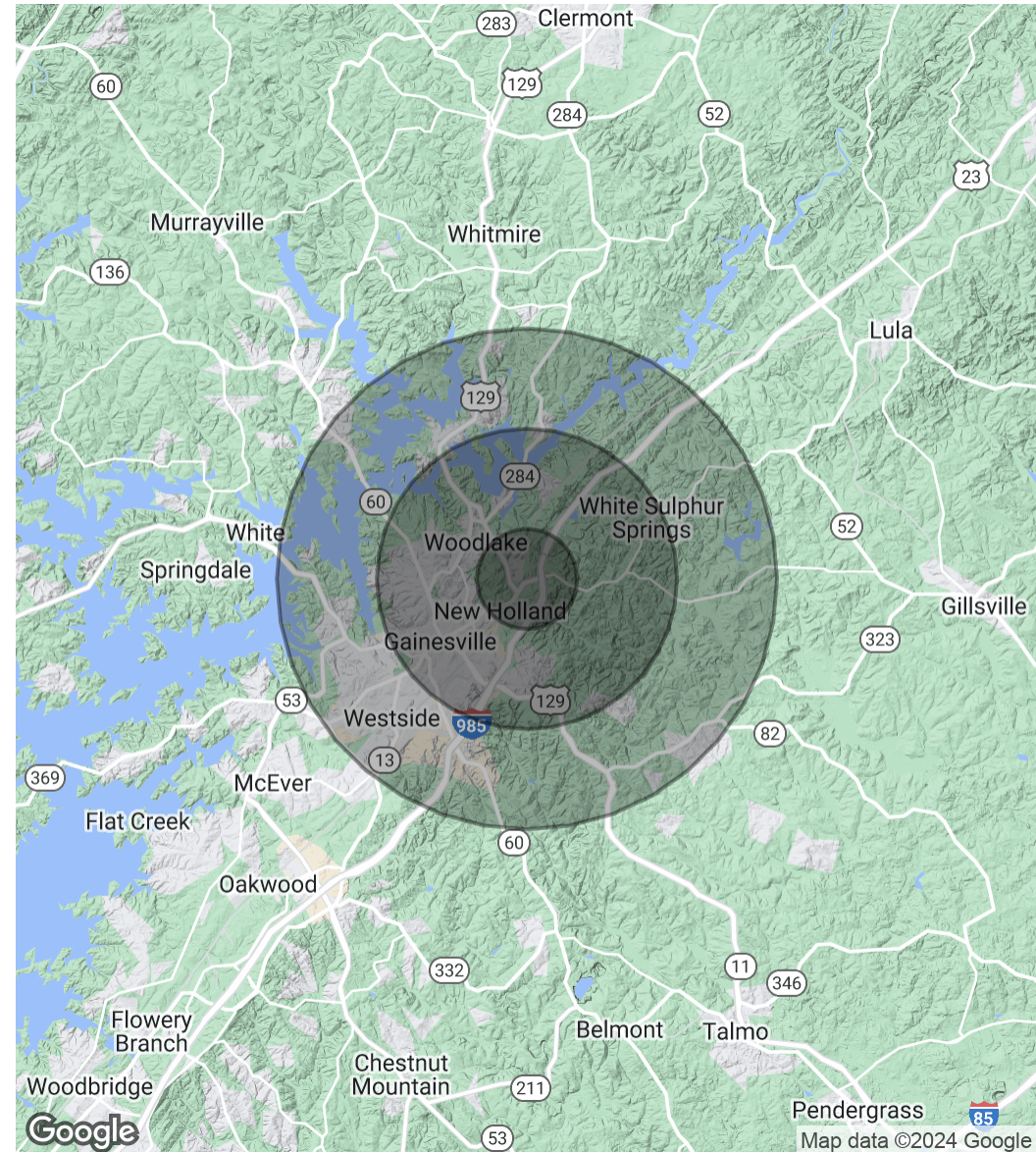
POPULATION

	1 MILE	3 MILES	5 MILES
Total Population	2,258	30,230	60,752
Average Age	36.2	35.4	34.9
Average Age (Male)	33.3	35.1	34.4
Average Age (Female)	40.2	36.1	35.1

HOUSEHOLDS & INCOME

	1 MILE	3 MILES	5 MILES
Total Households	883	11,172	22,540
# of Persons per HH	2.6	2.7	2.7
Average HH Income	\$58,767	\$60,807	\$60,876
Average House Value	\$170,536	\$174,240	\$187,184

2020 American Community Survey (ACS)



DANNY GLUSMAN

BROKER

404.465.3941

dglusman@widespreadgroup.com

WIDESPREAD
COMMERCIAL GROUP

widespreadgroup.com