

OFFICE PROPERTY // FOR LEASE

1,900 SF OFFICE SPACE AVAILABLE IN DETROIT'S GRANDMONT-ROSEDALE COMMUNITY

18940 SCHOOLCRAFT RD

DETROIT, MI 48223



- Ideal facility for complementary & supplemental medical practitioners
- 5 offices/exam rooms & reception area
- Central heat/air conditioning, security system
- Located in "The Home of The Good Neighbors" Community



P.A. COMMERCIAL
Corporate & Investment Real Estate

26555 Evergreen Road, Suite 1500
Southfield, MI 48076

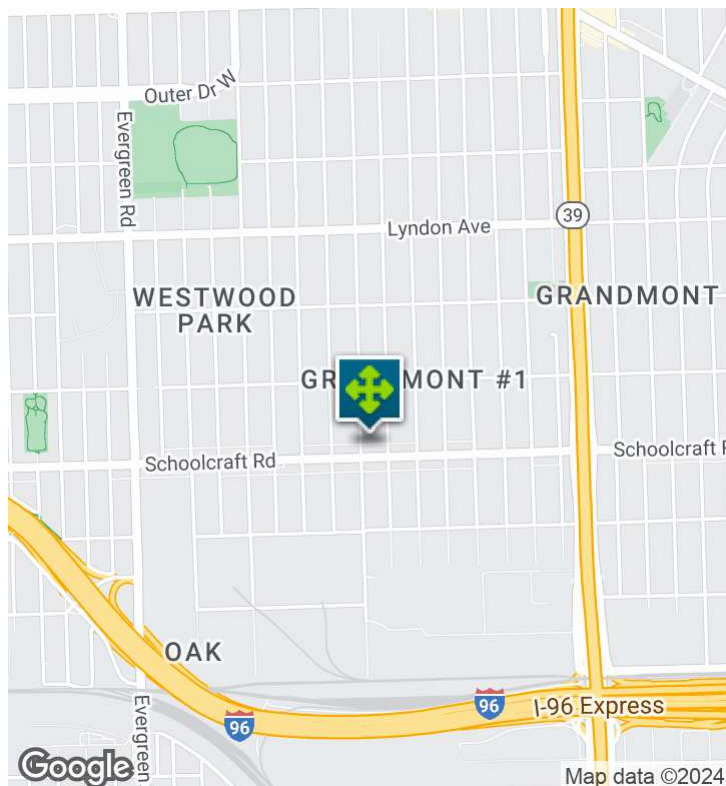
248.358.0100

pacommercial.com

We obtained the information above from sources we believe to be reliable. However, we have not verified its accuracy and make no guarantee, warranty or representation about it. It is submitted subject to the possibility of errors, omissions, change of price, rental or other conditions, prior sale, lease or financing, or withdrawal without notice. We include projections, opinions, assumptions or estimates for example only, and they may not represent current, past or future performance of the property. You and your tax and legal advisors should conduct your own investigation of the property and transaction.

18940 SCHOOLCRAFT RD, DETROIT, MI 48223 // FOR LEASE

EXECUTIVE SUMMARY



Lease Rate	\$10.50 SF/YR (MG)
------------	--------------------

OFFERING SUMMARY

Building Size:	2,800 SF
Available SF:	1,900 SF
Lot Size:	0.14 Acres
Year Built:	1966
Zoning:	B4
Market:	Detroit / W of Woodward
Submarket:	Detroit / The Pointes

PROPERTY OVERVIEW

Office space with plenty of potential available for lease in the close-knit Grandmont/Rosedale community - called the 'Home of the Good Neighbors' community.

Built out as medical, the 1,900 SF of available space accompanies Artesian Dental Group PLC in this two-tenant building. The lease is below market rate with flexible terms and includes access to 360 SF shared reception area. Located just minutes from Southfield Freeway, I-96 Express, and West Grand River Ave.

LOCATION OVERVIEW

Located just minutes from Southfield Freeway, I-96 Express, and West Grand River Ave. The Grandmont/Rosedale community is made up of 5 neighborhoods. North Rosedale Park, Rosedale Park, Grandmont, Grandmont #1 and Minock Park. These neighborhoods are among some of the most desired residential communities in Detroit.

PROPERTY HIGHLIGHTS

- Ideal facility for complementary & supplemental medical practitioners
- 5 offices/exam rooms & reception area
- Central heat/air conditioning, security system
- Located in "The Home of The Good Neighbors" Community



P.A. COMMERCIAL
Corporate & Investment Real Estate

DeVon Jackson SENIOR ASSOCIATE
D: 248.663.0508 | C: 248.568.1488
DeVon@pacommercial.com

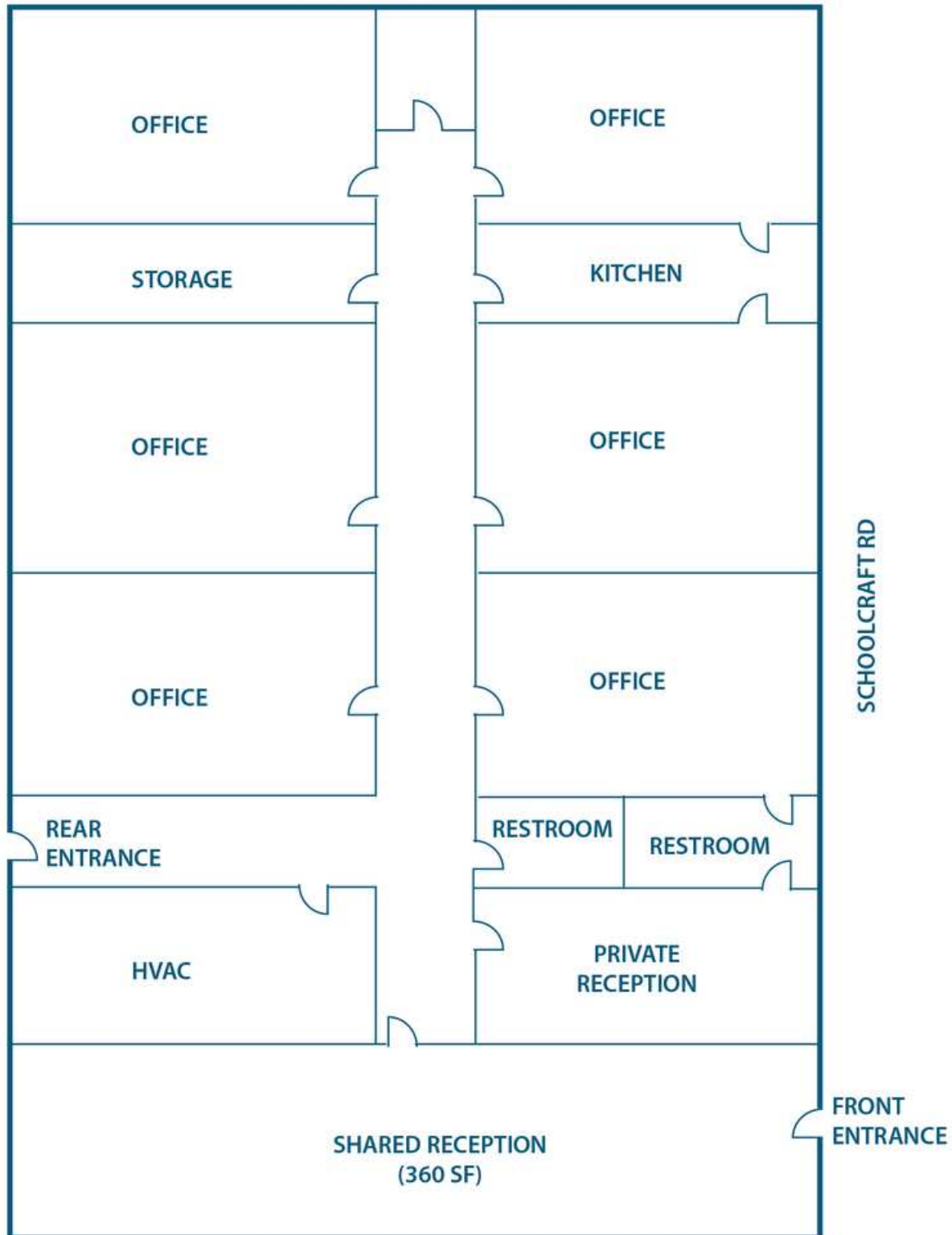
Kevin Bull SENIOR ASSOCIATE
D: 248.358.5361 | C: 248.895.9972
kevin@pacommercial.com

We obtained the information above from sources we believe to be reliable. However, we have not verified its accuracy and make no guarantee, warranty or representation about it. It is submitted subject to the possibility of errors, omissions, change of price, rental or other conditions, prior sale, lease or financing, or withdrawal without notice. We include projections, opinions, assumptions or estimates for example only, and they may not represent current, past or future performance of the property. You and your tax and legal advisors should conduct your own investigation of the property and transaction.

18940 SCHOOLCRAFT RD, DETROIT, MI 48223 // FOR LEASE

FLOOR PLANS

APPROXIMATELY 1,900 SF



P.A. COMMERCIAL
Corporate & Investment Real Estate

DeVon Jackson SENIOR ASSOCIATE
D: 248.663.0508 | C: 248.568.1488
DeVon@pacommercial.com

Kevin Bull SENIOR ASSOCIATE
D: 248.358.5361 | C: 248.895.9972
kevin@pacommercial.com

We obtained the information above from sources we believe to be reliable. However, we have not verified its accuracy and make no guarantee, warranty or representation about it. It is submitted subject to the possibility of errors, omissions, change of price, rental or other conditions, prior sale, lease or financing, or withdrawal without notice. We include projections, opinions, assumptions or estimates for example only, and they may not represent current, past or future performance of the property. You and your tax and legal advisors should conduct your own investigation of the property and transaction.

18940 SCHOOLCRAFT RD, DETROIT, MI 48223 // FOR LEASE

ADDITIONAL PHOTOS



P.A. COMMERCIAL
Corporate & Investment Real Estate

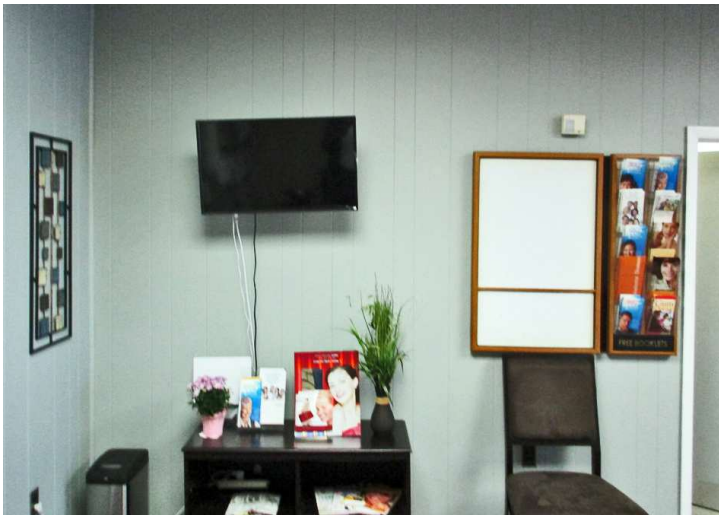
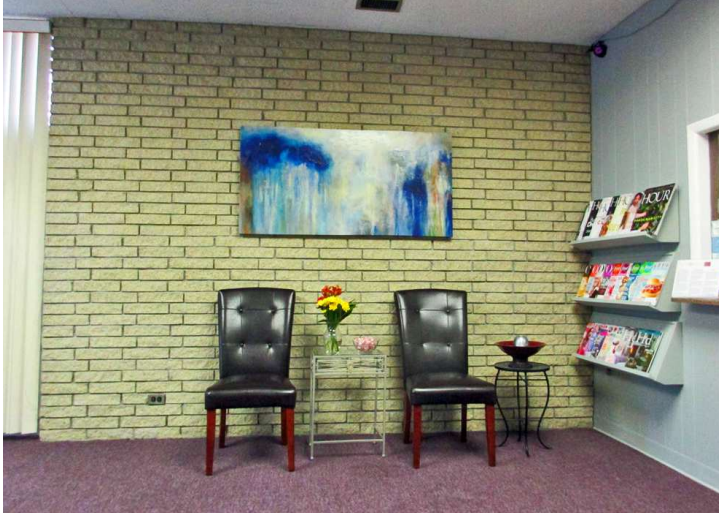
DeVon Jackson SENIOR ASSOCIATE
D: 248.663.0508 | C: 248.568.1488
DeVon@pacommercial.com

Kevin Bull SENIOR ASSOCIATE
D: 248.358.5361 | C: 248.895.9972
kevin@pacommercial.com

We obtained the information above from sources we believe to be reliable. However, we have not verified its accuracy and make no guarantee, warranty or representation about it. It is submitted subject to the possibility of errors, omissions, change of price, rental or other conditions, prior sale, lease or financing, or withdrawal without notice. We include projections, opinions, assumptions or estimates for example only, and they may not represent current, past or future performance of the property. You and your tax and legal advisors should conduct your own investigation of the property and transaction.

18940 SCHOOLCRAFT RD, DETROIT, MI 48223 // FOR LEASE

ADDITIONAL PHOTOS



P.A. COMMERCIAL
Corporate & Investment Real Estate

DeVon Jackson SENIOR ASSOCIATE
D: 248.663.0508 | C: 248.568.1488
DeVon@pacommercial.com

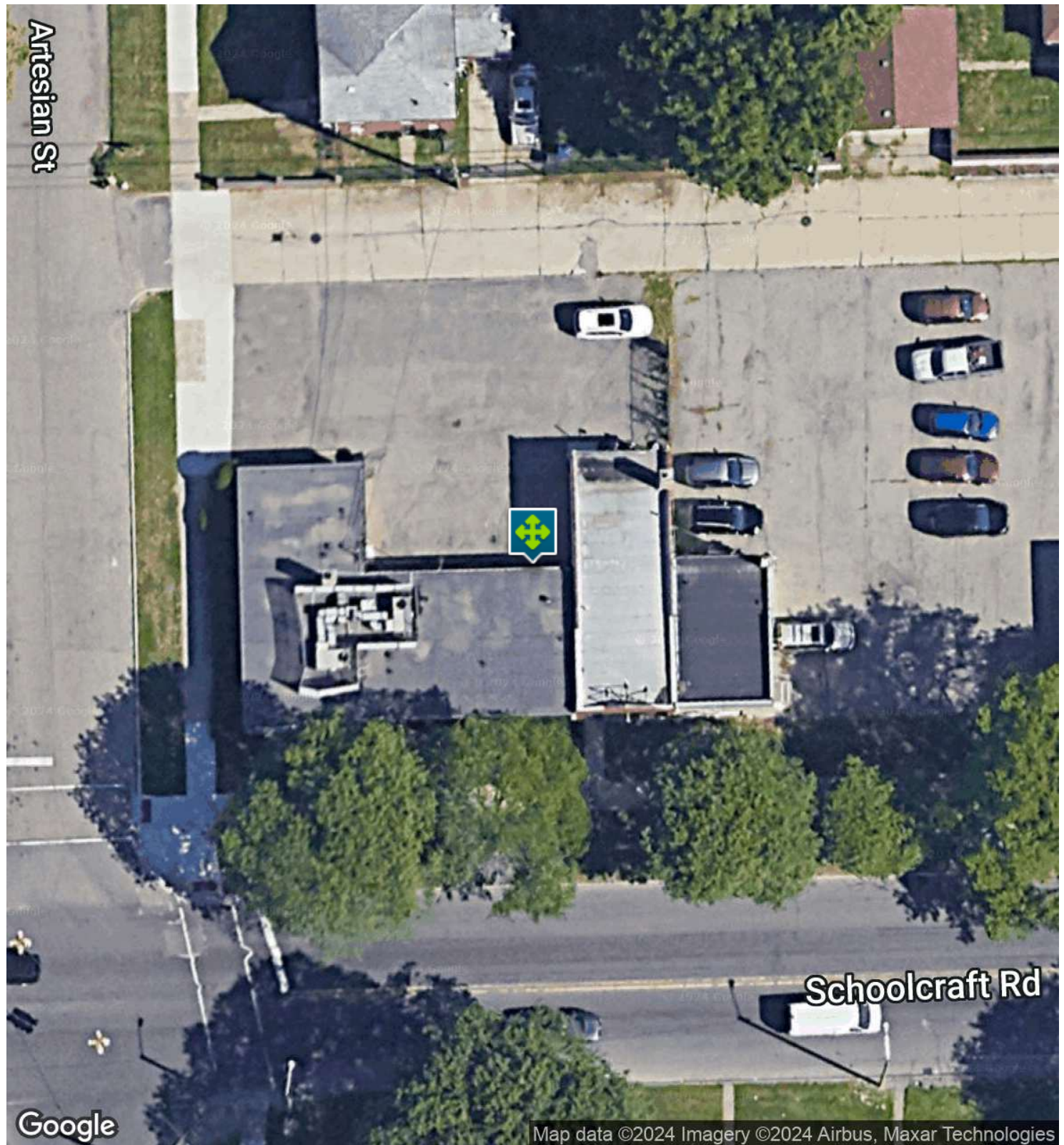
Kevin Bull SENIOR ASSOCIATE
D: 248.358.5361 | C: 248.895.9972
kevin@pacommercial.com

We obtained the information above from sources we believe to be reliable. However, we have not verified its accuracy and make no guarantee, warranty or representation about it. It is submitted subject to the possibility of errors, omissions, change of price, rental or other conditions, prior sale, lease or financing, or withdrawal without notice. We include projections, opinions, assumptions or estimates for example only, and they may not represent current, past or future performance of the property. You and your tax and legal advisors should conduct your own investigation of the property and transaction.

Schoolcraft

18940 SCHOOLCRAFT RD, DETROIT, MI 48223 // FOR LEASE

AERIAL MAP



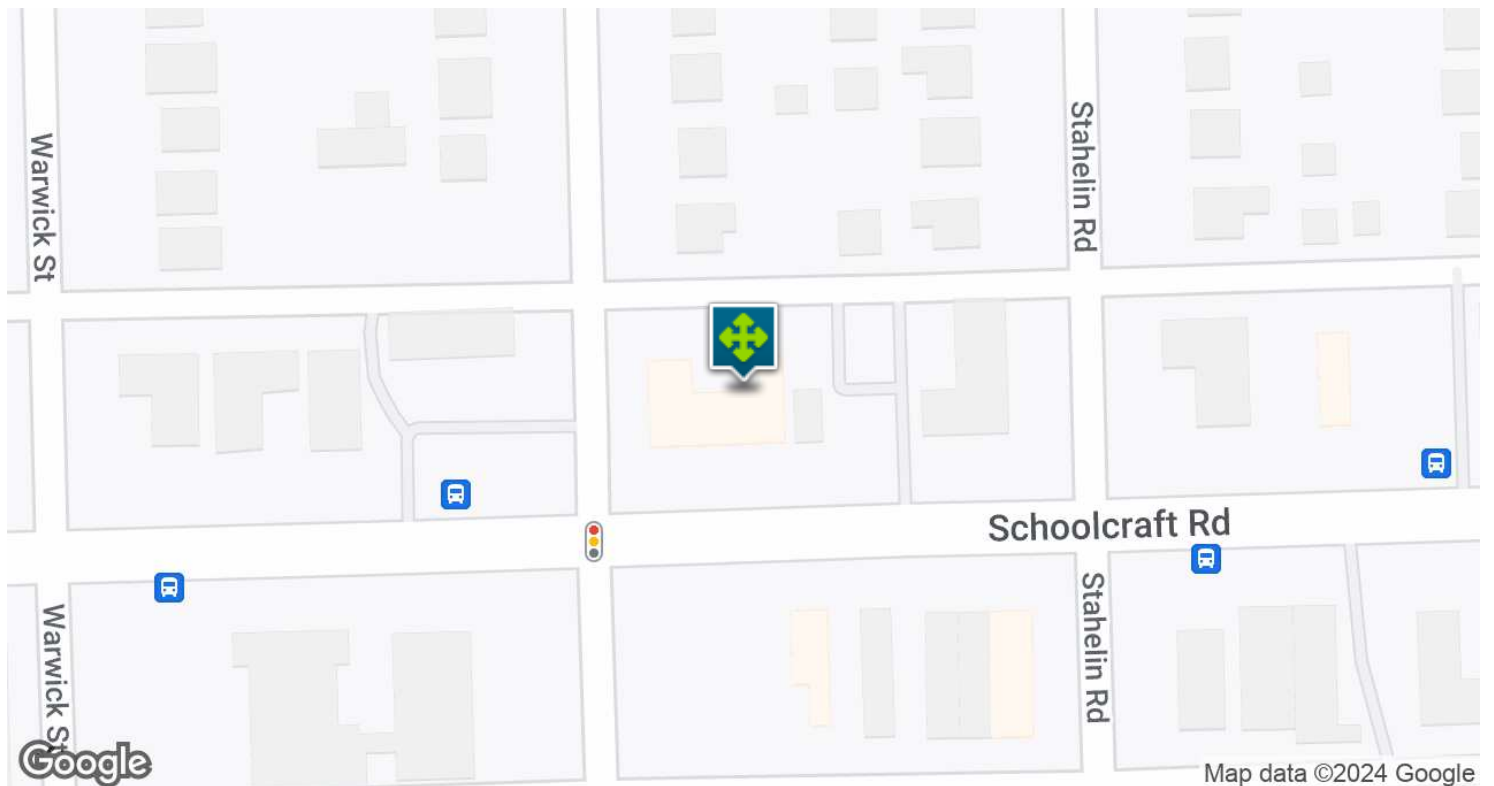
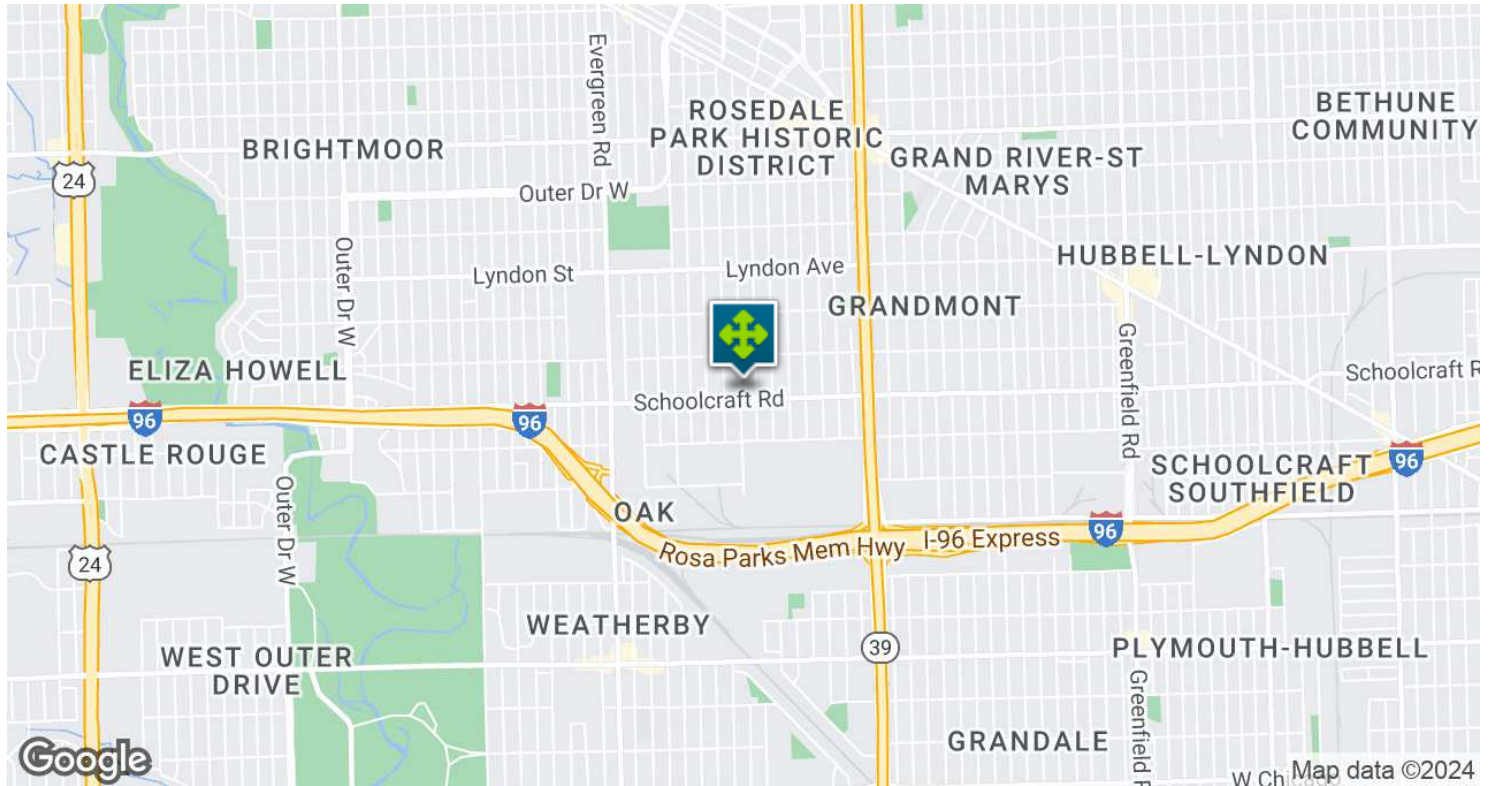
DeVon Jackson SENIOR ASSOCIATE
D: 248.663.0508 | C: 248.568.1488
DeVon@pacommercial.com

Kevin Bull SENIOR ASSOCIATE
D: 248.358.5361 | C: 248.895.9972
kevin@pacommercial.com

We obtained the information above from sources we believe to be reliable. However, we have not verified its accuracy and make no guarantee, warranty or representation about it. It is submitted subject to the possibility of errors, omissions, change of price, rental or other conditions, prior sale, lease or financing, or withdrawal without notice. We include projections, opinions, assumptions or estimates for example only, and they may not represent current, past or future performance of the property. You and your tax and legal advisors should conduct your own investigation of the property and transaction.

18940 SCHOOLCRAFT RD, DETROIT, MI 48223 // FOR LEASE

LOCATION MAP

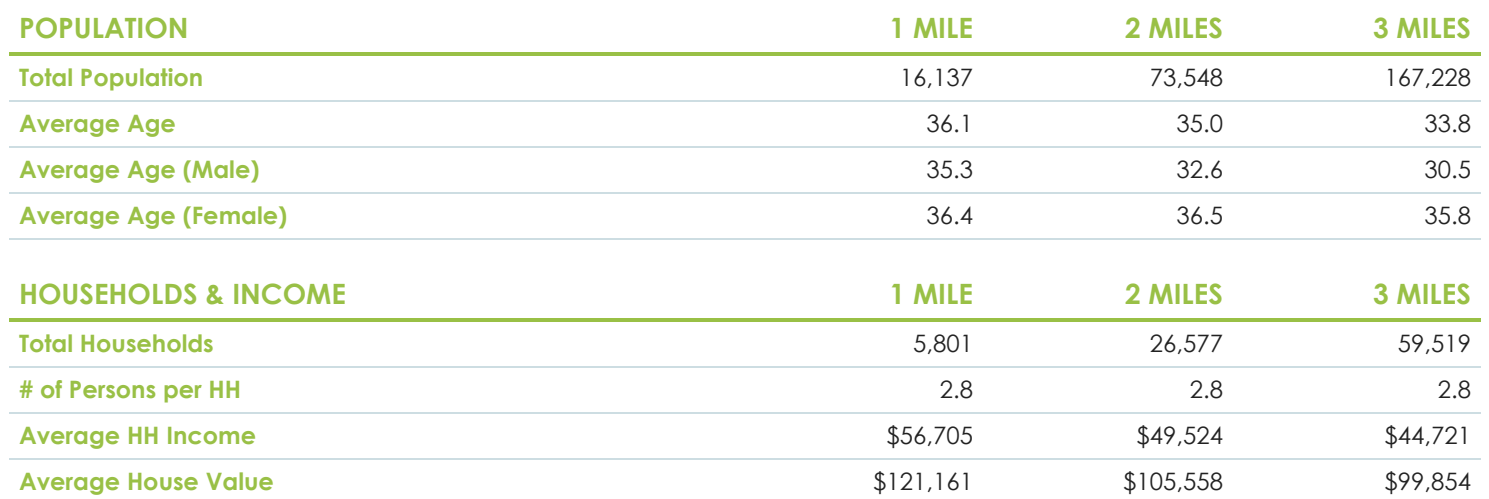


DeVon Jackson SENIOR ASSOCIATE
D: 248.663.0508 | C: 248.568.1488
DeVon@pacommercial.com

Kevin Bull SENIOR ASSOCIATE
D: 248.358.5361 | C: 248.895.9972
kevin@pacommercial.com

We obtained the information above from sources we believe to be reliable. However, we have not verified its accuracy and make no guarantee, warranty or representation about it. It is submitted subject to the possibility of errors, omissions, change of price, rental or other conditions, prior sale, lease or financing, or withdrawal without notice. We include projections, opinions, assumptions or estimates for example only, and they may not represent current, past or future performance of the property. You and your tax and legal advisors should conduct your own investigation of the property and transaction.

DEMOGRAPHICS MAP & REPORT



P.A. COMMERCIAL
Corporate & Investment Real Estate

Kevin Bull SENIOR ASSOCIATE
D: 248.358.5361 | C: 248.895.9972
kevin@paccommercial.com

We obtained the information above from sources we believe to be reliable. However, we have not verified its accuracy and make no guarantee, warranty or representation about it. It is submitted subject to the possibility of errors, omissions, change of price, rental or other conditions, prior sale, lease or financing, or withdrawal without notice. We include projections, opinions, assumptions or estimates for example only, and they may not represent current, past or future performance of the property. You and your tax and legal advisors should conduct your own investigation of the property and transaction.

18940 SCHOOLCRAFT RD, DETROIT, MI 48223 // FOR LEASE

CONTACT US



FOR MORE INFORMATION, PLEASE CONTACT:



DeVon Jackson
SENIOR ASSOCIATE

D: 248.663.0508

C: 248.568.1488

DeVon@pacommercial.com



Kevin Bull
SENIOR ASSOCIATE

D: 248.358.5361

C: 248.895.9972

kevin@pacommercial.com

P.A. Commercial

26555 Evergreen Road, Suite 1500
Southfield, MI 48076

P: 248.358.0100

F: 248.358.5300

pacommercial.com

Follow Us!



P.A. COMMERCIAL
Corporate & Investment Real Estate

We obtained the information above from sources we believe to be reliable. However, we have not verified its accuracy and make no guarantee, warranty or representation about it. It is submitted subject to the possibility of errors, omissions, change of price, rental or other conditions, prior sale, lease or financing, or withdrawal without notice. We include projections, opinions, assumptions or estimates for example only, and they may not represent current, past or future performance of the property. You and your tax and legal advisors should conduct your own investigation of the property and transaction.