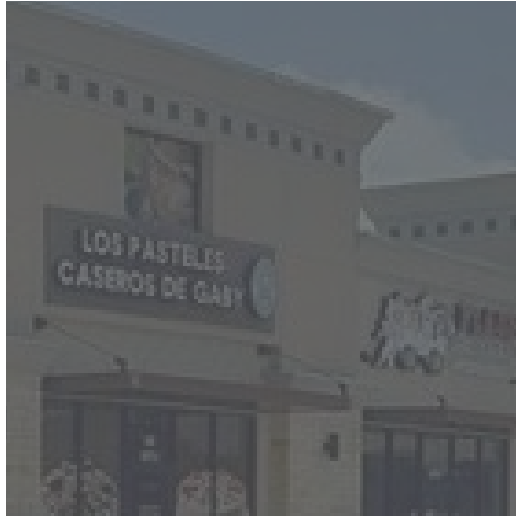
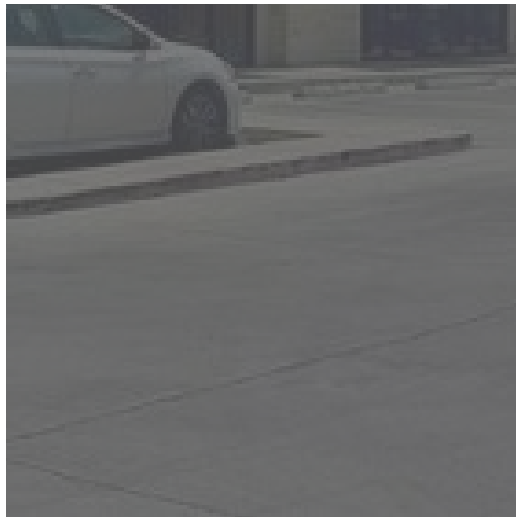


RETAIL PROPERTY FOR LEASE

RENATA PARK PLAZA



600
N SHARY RD
MISSION, TX

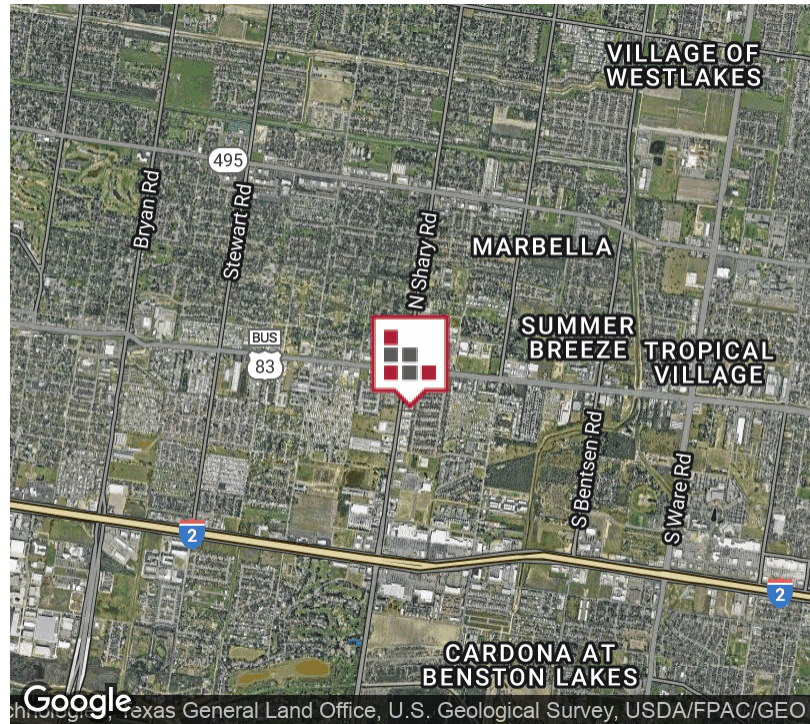


READY TO MOVE IN - This 1,300 sf luxurious unit was formerly utilized as a Day Spa and Real Estate Office. There is a large waiting area and reception window that opens to Five (5) private offices/treatment rooms, work area and restroom. Ceramic Tile floors throughout and custom paint. This suite offers privacy with a staircase leading to this upstairs unit and less than 1 mile to Interstate.



FOR LEASE RENATA PARK PLAZA

EXECUTIVE SUMMARY



OFFERING SUMMARY

Lease Rate:	\$1.80 SF/month (Gross)
Monthly Rent:	\$2,340.00
Building Size:	13,369 SF
Available SF:	1,300 SF
Number of Units:	8
Year Built:	2014
Zoning:	Commercial
Market:	Rio Grande Valley
Submarket:	Mission

PROPERTY OVERVIEW

READY TO MOVE IN - This 1,300 sf luxurious unit was formerly utilized as a Day Spa and Real Estate Offices. There is a large waiting area and reception window that opens to Five (5) private offices/treatment rooms, work area and restroom. Ceramic Tile floors throughout and custom paint. This suite offers privacy with a staircase leading to this upstairs unit and less than 1 mile to Interstate 2 and the Central Mission Area. This unit would be ideal for another body treatment/botox/day spa tenant and just as easily as an upscale office for your business!

PROPERTY HIGHLIGHTS

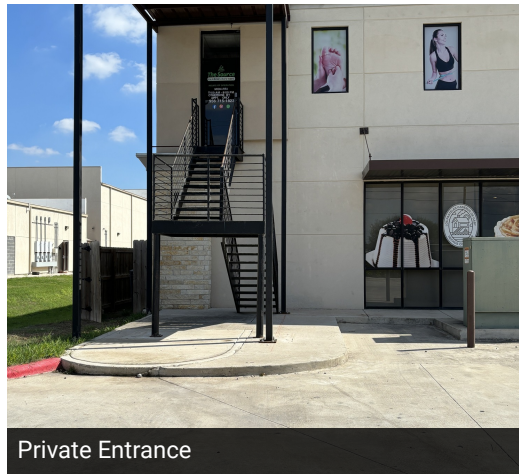
- **Move In Ready**
- **1 Mile from Interstate 2**
- **Private Entrance for your business**
- **Centrally located in the Mission Area**

FOR LEASE RENATA PARK PLAZA

ADDITIONAL PHOTOS



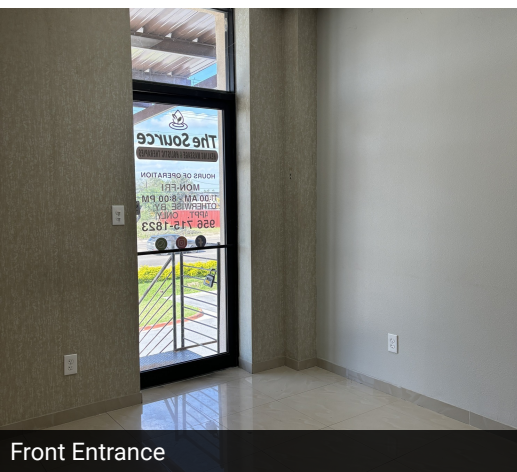
Signage Availability



Private Entrance



Reception Window



Front Entrance



Wall Simgage - Interior



Work Area



Private Office with cabinetry



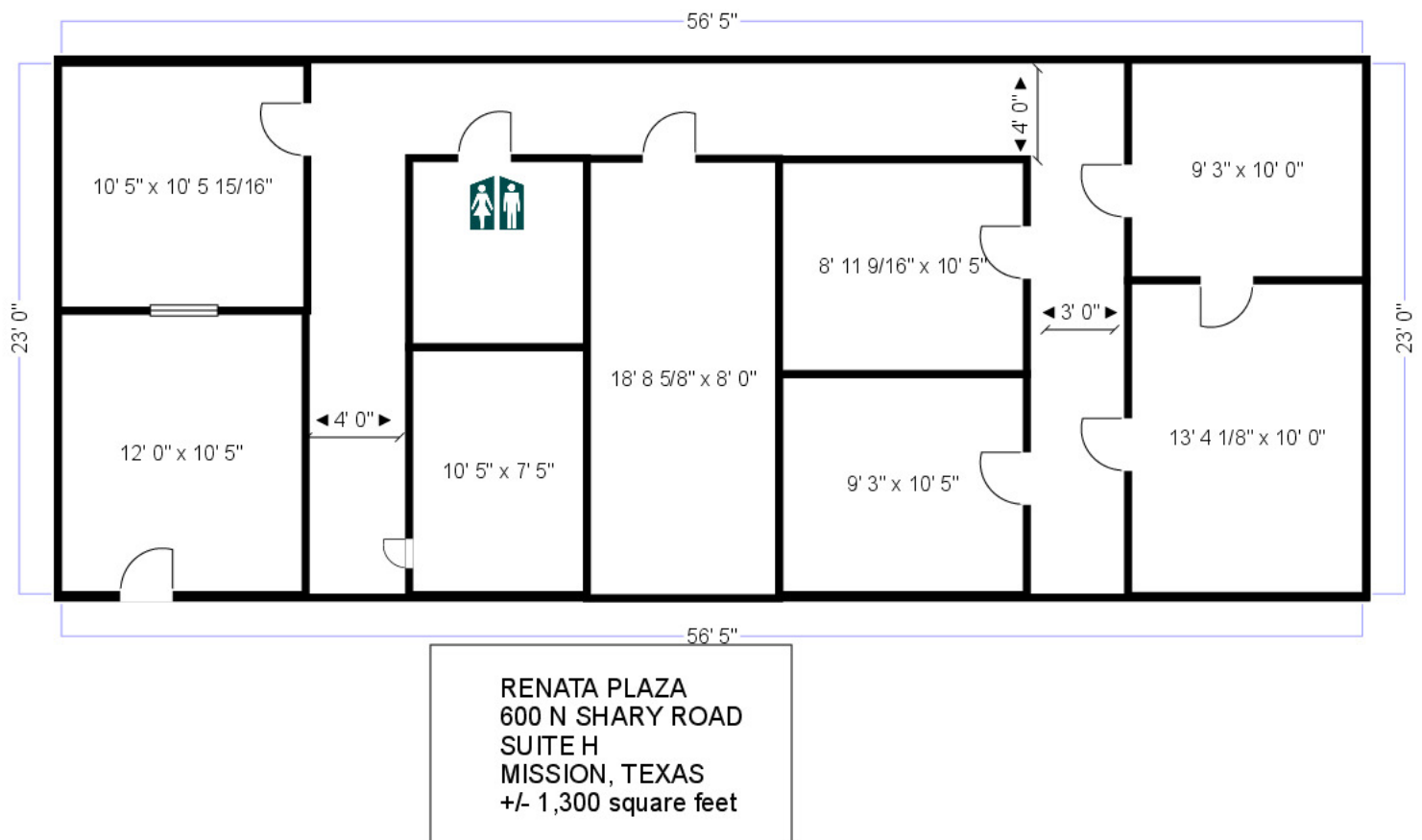
Hallway to Offices



Typical Office

FOR LEASE
RENATA PARK PLAZA

FLOOR PLAN



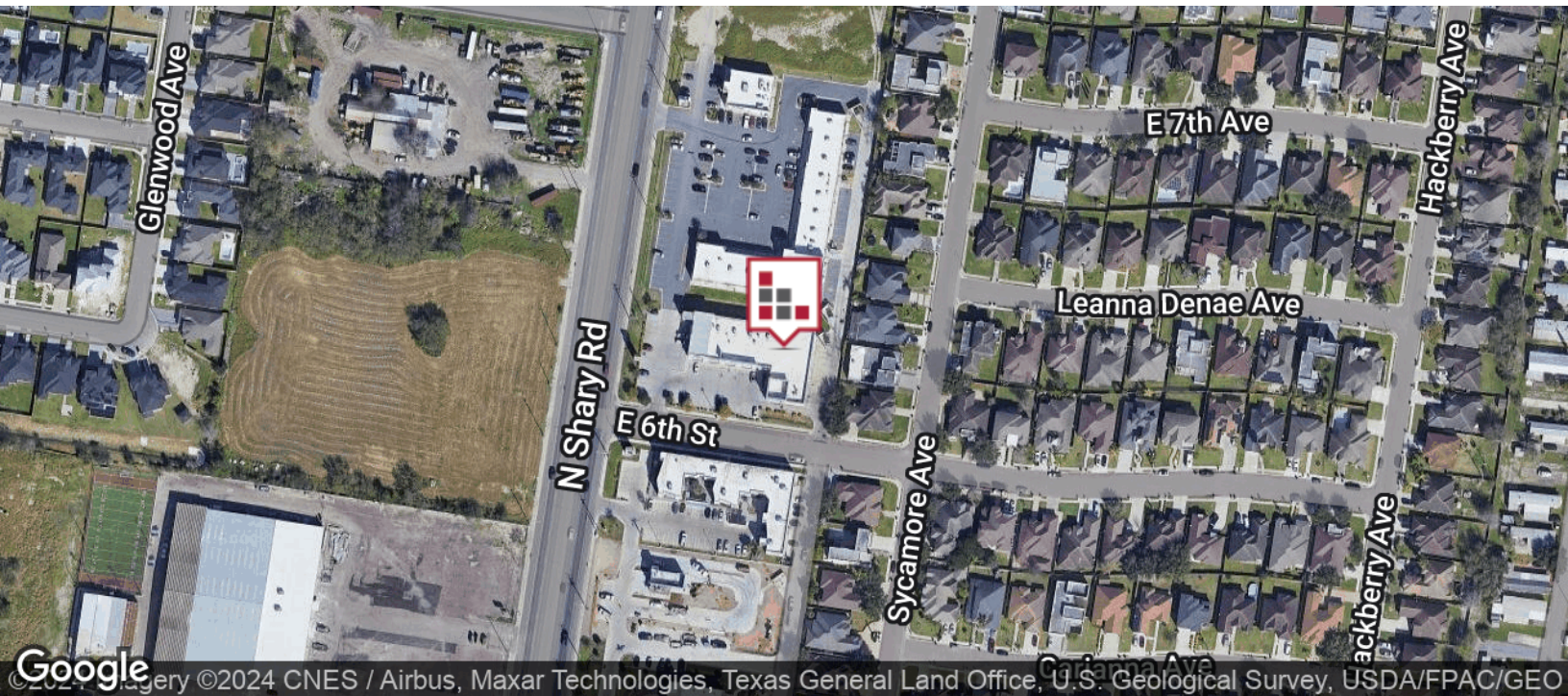
FOR LEASE RENATA PARK PLAZA

RETAILER MAP



FOR LEASE
RENATA PARK PLAZA

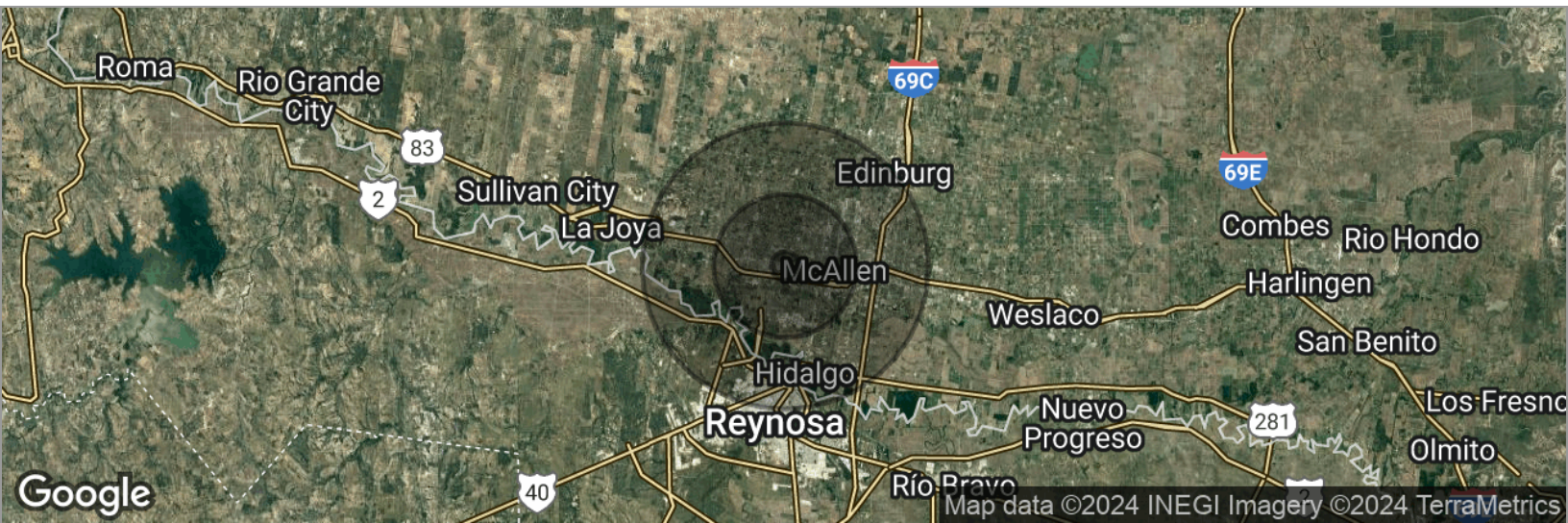
LOCATION MAP



FOR LEASE

RENATA PARK PLAZA

DEMOGRAPHICS MAP



POPULATION

	1 MILE	5 MILES	10 MILES
Total population	8,946	194,711	510,630
Median age	35.0	33.7	31.8
Median age (Male)	33.7	31.3	30.1
Median age (Female)	38.0	36.7	34.1

HOUSEHOLDS & INCOME

	1 MILE	5 MILES	10 MILES
Total households	3,595	69,368	172,934
# of persons per HH	2.5	2.8	3.0
Average HH income	\$66,860	\$57,125	\$56,193
Average house value	\$125,843	\$130,268	\$118,833

ETHNICITY (%)

	1 MILE	5 MILES	10 MILES
Hispanic	82.3%	89.1%	90.7%

RACE (%)

	1 MILE	5 MILES	10 MILES
White	67.1%	68.2%	74.2%
Black	1.3%	0.5%	0.7%
Asian	3.3%	1.9%	1.4%
Hawaiian	0.2%	0.1%	0.0%
American Indian	0.1%	0.2%	0.2%
Other	16.5%	17.3%	12.1%

* Demographic data derived from 2020 ACS - US Census