



201 NW 10th St, Oklahoma City, OK 73103



PROPERTY DESCRIPTION

This modern office gem features a single-story layout, offering a spacious 7,370 SF unit within a 40,736 SF building. The contemporary design seamlessly blends style and practicality, providing businesses with a versatile and comfortable workspace in a state-of-the-art setting.

PROPERTY HIGHLIGHTS

- Prime Midtown location with proximity to many restaurants
- Ideal for professional office use
- Modern and high-end finishes
- 3 covered parking spots available
- Signage available on the door and in the lobby
- Easy access to I-35, convenient for commuting
- Walkability and surrounded by local transport stops

LOCATION DESCRIPTION

Located in the same building as Packard's New American Kitchen in Midtown, this office sublease opportunity provides you with an amazing professional space and walkability to other retail, office, and eateries in the Midtown area. With a traffic count of 12,049 in 2017 on 10th St and 1,443 in 2022 on Robinson Ave, the location offers you access to the heart of Midtown.

OFFERING SUMMARY

Lease Rate:	\$22.00 SF/yr (NNN)
NNN Fee:	\$5.10
Available SF:	7,370 SF
Building Size:	40,736 SF
Traffic Count:	10th St - 12,049 (2017)
Escalations:	4.5%/year

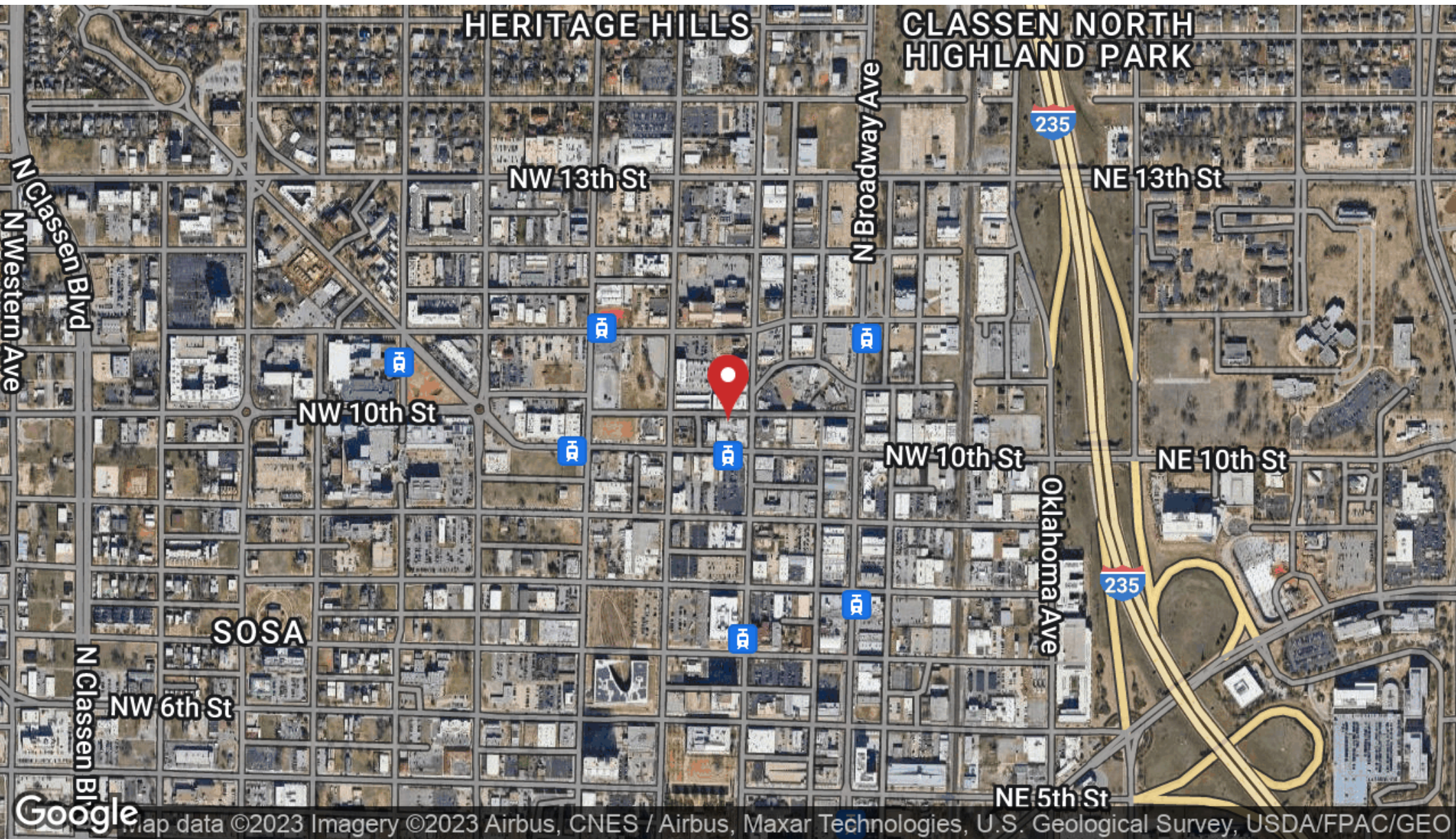
Nick Tyler
Sales Associate
405.397.3228
nick@fleskeholding.com

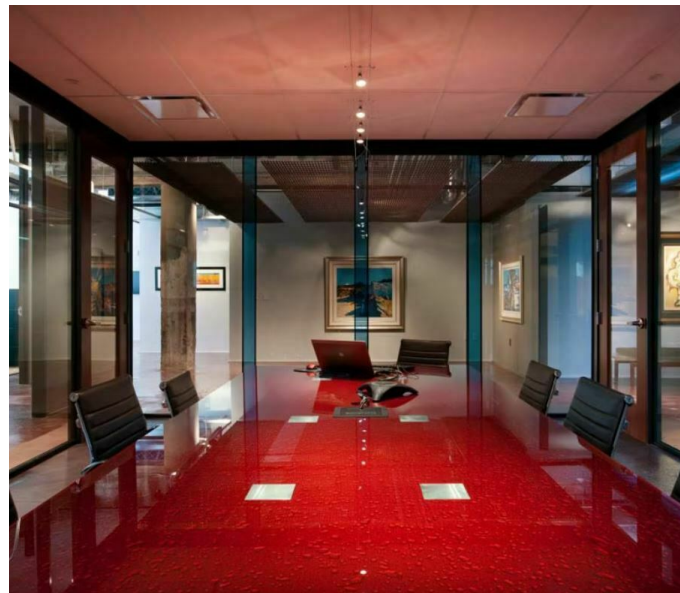
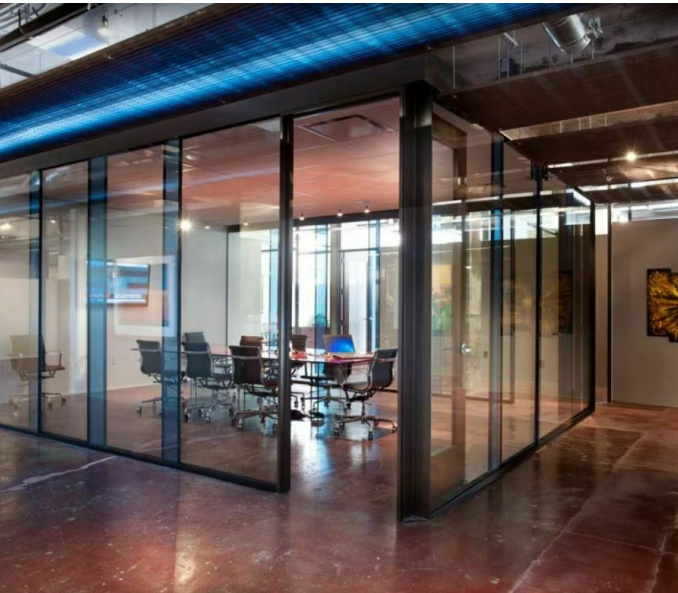


Kendra Streeter
Broker Associate
405.590.7202
kendra@fleskeholding.com



201 NW 10th St, Oklahoma City, OK 73103





201 NW 10th St - MVP Sublease



FOR LEASE

201 NW 10th St, Oklahoma City, OK 73103

