

±5.7 AC DEVELOPMENT LAND **GATE 5, FORT EISENHOWER**

- LOCATED ON CORNER W/ FULL MOTION ACCESS
- ACROSS THE STREET FROM GATE 5 ENTRANCE
- TOBACCO RD 18.2K VPD / HWY 1 18.4K VPD



FOR SALE

104 Williamsburg Dr, Hepzibah, GA,



TABLE OF CONTENTS



DEVELOPMENT SITE

- Executive Summary
- Site Maps
- Area Overview
- The Finem Group



Jonathan Aceves, CCIM, MBA
Finem Group
V.P./Senior Broker
Jaceves@meybohm.com
706-294-1757



John Eckley, MBA, Civil Eng.
Finem Group
V.P./Senior Broker
Jeckley@meybohm.com
706-305-0054



Dustin Wright
Finem Group
Commercial Advisor
Dwright@meybohm.com
706-830-8266



Stephen Long
Finem Group
Investment Analyst
Slong@meybohm.com
706-513-3840

OFFER SUBMISSION

Please submit all offers as a non-binding letter of intent (LOI).
Including:

- Price
- DD Time Frame
- Earnest Money
- Special Stipulations



EXECUTIVE SUMMARY



104 WILLIAMSBURG DRIVE, AUGUSTA, GA

±5.7 ACRE DEVELOPMENT SITE



\$499,000
Price



Water and Sewer
Utilities Available



128-0-016-01-0
Tax Parcel ID



±5.7
Total Acres



Growing Area
Attractive Site



Fort Eisenhower
Gate 5



18.4 K VPD
Traffic Count HWY 1



18.2 K VPD
Traffic Count Tobacco Rd



Full Motion
Access



SALES DESCRIPTION / LOCATION DESCRIPTION

Sales Description

The Finem Group at Meybohm Commercial is proud to exclusively present this 5.7-acre development tract for sale in Augusta, Georgia. Located off of Tobacco Road just across U.S. Hwy. 1 (Deans Bridge Road) from Gate 5 for Fort Gordon, the home of the U.S Army's Cyber Command Headquarters. This property is ideal for multifamily or retail development. The property has a rolling topography with thinned pine trees covering the property and is zoned for Multifamily (R3-B, Richmond County, see Zoning Case). Utilities are located on-site.

Location Description

U.S. Army Cyber Command (ARCYBER) is the Army headquarters beneath the United States Cyber Command. The Army Cyber Command Headquarters located at Fort Eisenhower, operates and defends Army networks and delivers cyberspace effects against adversaries to defend the nation. ARCYBER, led by Fort Eisenhower, conducts global operations 24/7 with approximately 16,500 Soldiers, civilian employees, and contractors worldwide. The Pentagon's 2013 announcement led to the relocation of the U.S. Army Cyber Command from Fort Meade in Maryland to Fort Eisenhower in Augusta. Fort Eisenhower is fast becoming a center for joint forces activities, training, and operations and is a huge employer in east Georgia. With a workforce of 31,155, much of the installation's annual economic impact of nearly \$2.4 billion goes directly into area shops, real estate, banks, and other businesses.

FORT GORDON

**FORT GORDON
GATE 5**



104 WILLIAMSBURG DR.

TOBACCO RD.





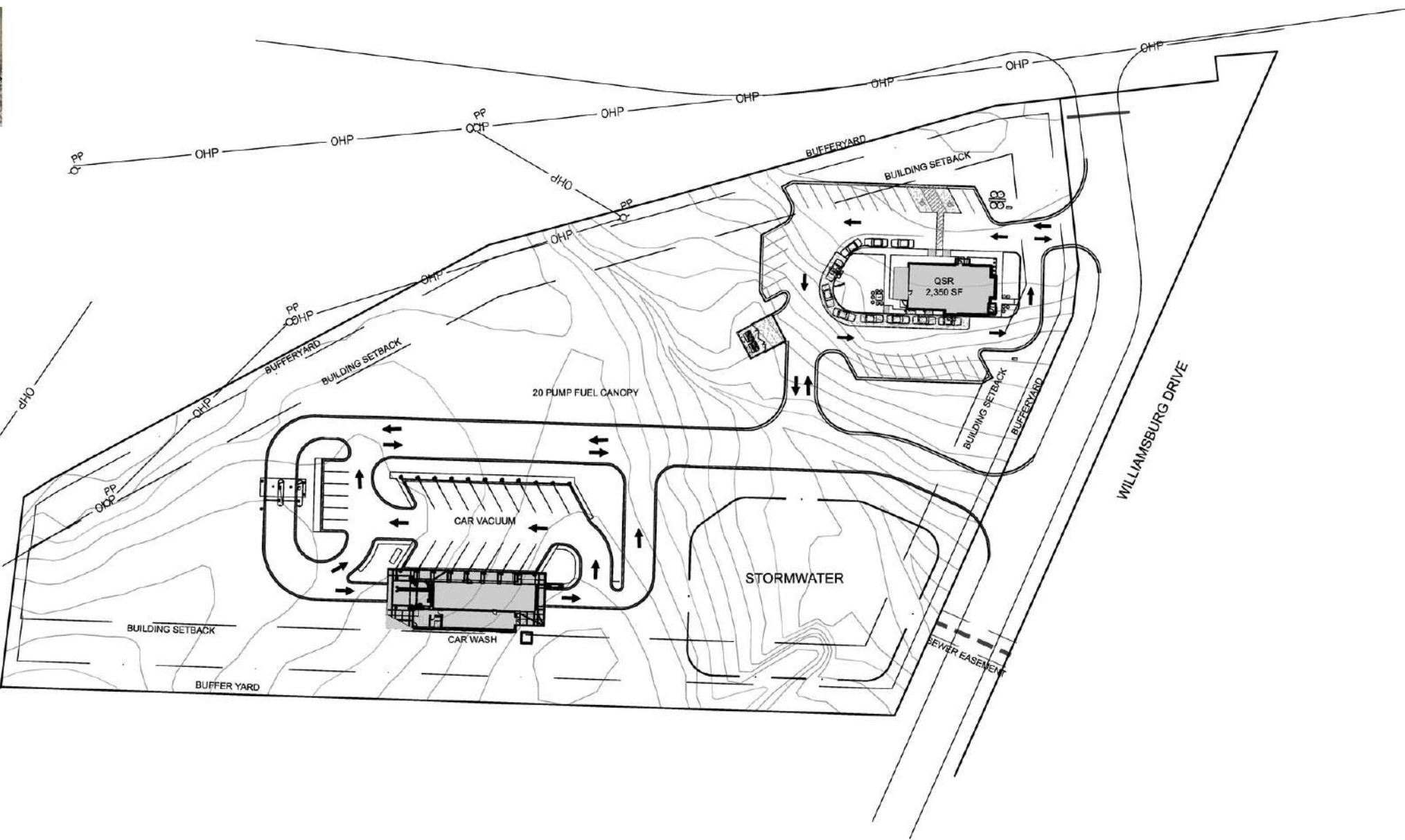
ACCESS MAP

The subject property is located on the corner of Williamsburg Drive and Tobacco Road. The property will be able to have full motion access on Williamsburg Drive.

Williamsburg will be able to act as an access road, and there is full motion access to Williamsburg Drive from Tobacco Road.

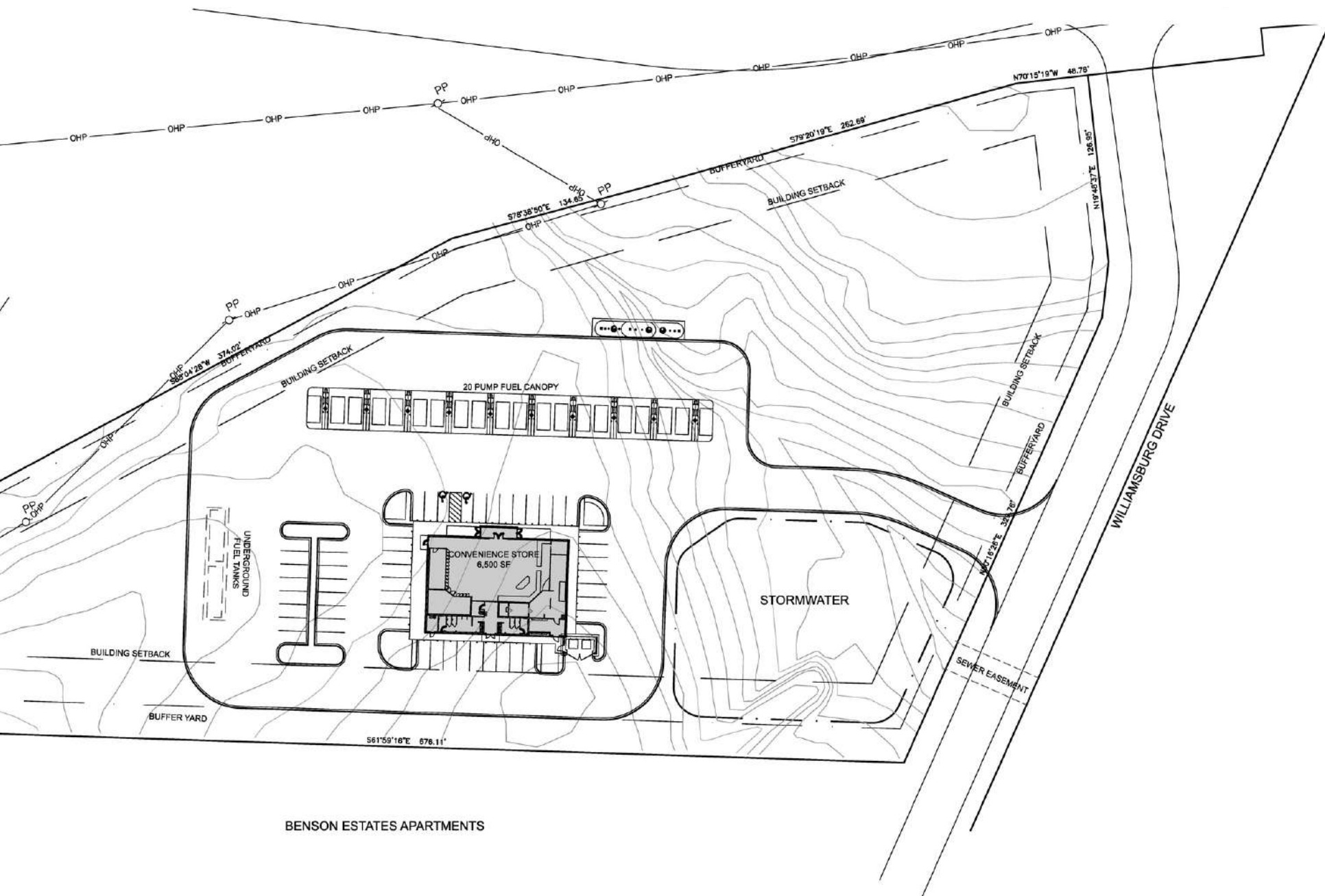


POTENTIAL SITE PLAN / CAR WASH & QSR

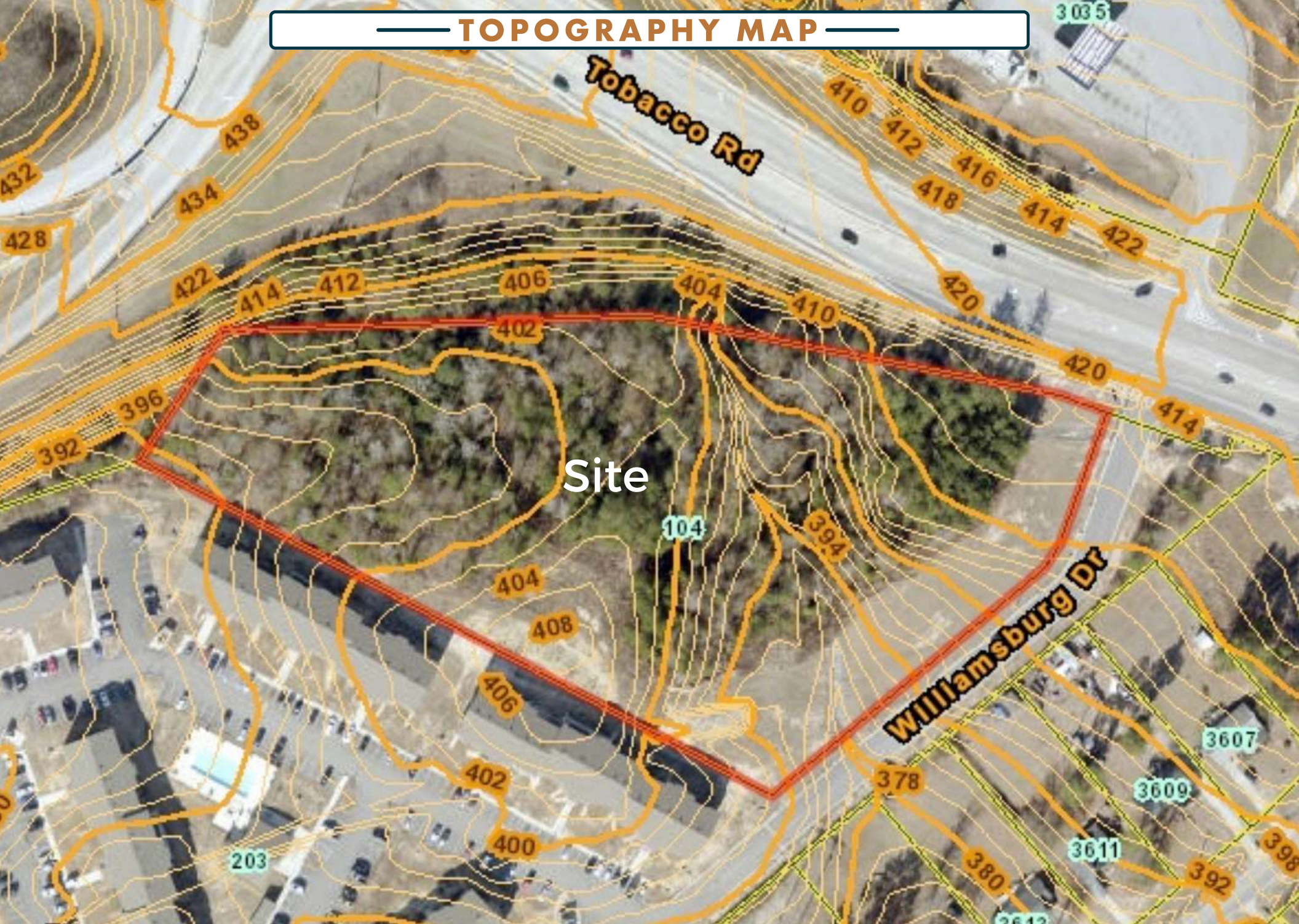


BENSON ESTATES APARTMENTS

POTENTIAL SITE PLAN / C-STORE



— TOPOGRAPHY MAP —



UTILITY MAP

Closest sewer for 104 Williamsburg Dr

Created: Michele Bryce on 14 March, 2022

Augusta, GA Disclaimer

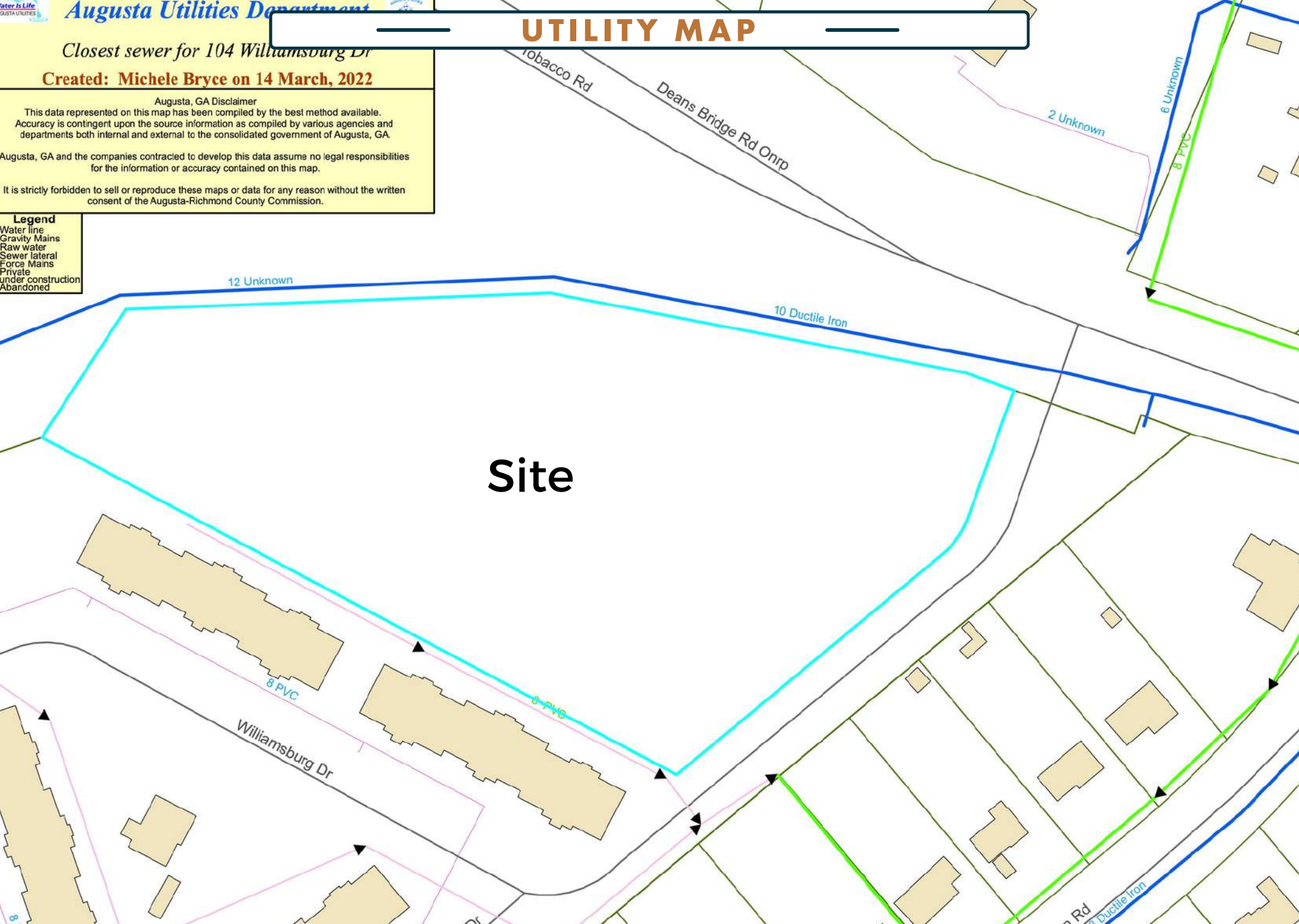
This data represented on this map has been compiled by the best method available. Accuracy is contingent upon the source information as compiled by various agencies and departments both internal and external to the consolidated government of Augusta, GA.

Augusta, GA and the companies contracted to develop this data assume no legal responsibilities for the information or accuracy contained on this map.

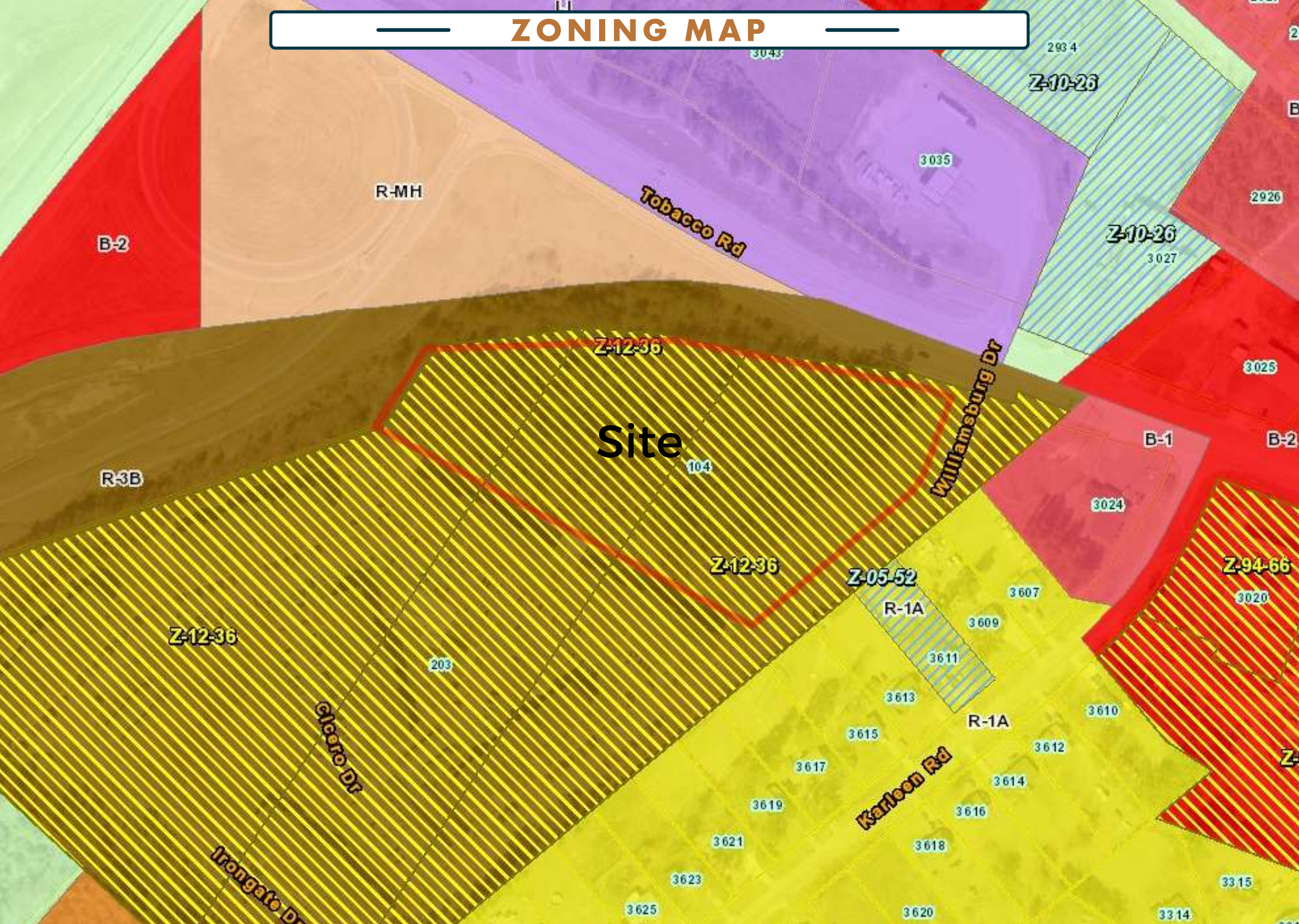
It is strictly forbidden to sell or reproduce these maps or data for any reason without the written consent of the Augusta-Richmond County Commission.

Legend

Water line
Gravity Mains
Raw water
Sewer lateral
Force Mains
Private
Under construction
Abandoned



ZONING MAP



Site

Z-12-36

Z-12-36

Z-12-36

Z-05-52

Z-10-26

Z-10-26

Z-94-66

To Whom It May Concern:

At its meeting on Tuesday, July 17, 2012 the Augusta Commission considered a petition by Joe H. Todd, on behalf of Johana IPRI Qualified Domestic Trust, requesting a change of zoning from Zone R-MH (Manufactured Home Residential) and Zone B-2 (General Business) to Zone R-3B (Multiple Family Residential) affecting property containing approximately 24 acres and is known as 3032 and 3044 Tobacco Road and 3850 Deans Bridge Road. (Tax Map 128-0-014-05-0, 128-0-014-04-0 & 128-0-016-00-0) POSTPONED from May 7, 2012 meeting.

It was the decision of the Commission to approve the petition with the following conditions:

- 1) that there be one single point of entry to the entire development;
- 2) that access to any future commercial development be at least 200 feet from the Tobacco Road intersection and
- 3) that the on/off site traffic improvements be as recommended by the traffic study and the City traffic engineer.

Enclosed is a zoning restriction agreement that must be returned to this office for recording. Until the agreement is properly recorded the zoning change does not become official and the new zoning classification will not be valid. Please remove sign.

Sincerely,



— DEMOGRAPHICS —



DEMOGRAPHICS	1 MILE RADIUS	3 MILE RADIUS	5 MILE RADIUS
Population	4,701	32,707	78,429
Med. Household Income	\$53,355	\$55,876	\$57,026
Population Med. Age	33.8 Years	31.8 Years	33.4 Years



THE CSRA OVERVIEW



622,275

CSRA Population



\$61,473

CSRA Med. Income



\$198,719

Med. Home Value



0.43%

Ann. Growth Rate



4

Total Colleges



9,921

College Studets



269,031

Labor Force



3.7%

Unemployment Rate

MSA BUSINESS OVERVIEW

Augusta is a regional center of medicine, biotechnology, and cyber security. Augusta University, the state's only public health sciences graduate university, employs over 7,000 people. Along with Piedmont Hospital, the Medical District of Augusta employs over 25,000 people and has an economic impact of over \$1.8 billion. Within the next few years, the city is expected to have rapid population growth of 10,000+ residents due to the announcement of the United States Army Cyber Command that will be located in Fort Eisenhower.

The city's three largest employers are Augusta University, the Savannah River Site (a Department of Energy nuclear facility), and the U.S. Army Cyber Center of Excellence at Fort Gordon, which oversees training for Cyber, Signal Corps, and Electronic Warfare. Other Companies with headquarters or distribution centers in the region are EZ-Go, Bridgestone, Tax Slayer, John Deere, Amazon, Kellogg's Kimberly Clark, Graphic Packaging International, and more.



Kimberly-Clark



**GEORGIA
CYBER CENTER**



Piedmont
HEALTHCARE



JOHN DEERE



TaxSlayer

MASTERS



Health
AUGUSTA UNIVERSITY



AUGUSTA UNIVERSITY
**MEDICAL COLLEGE
OF GEORGIA**

VA



U.S. Department
of Veterans Affairs

CYBER CITY

U.S. Army Cyber Command (ARCYBER) is the Army headquarters beneath United States Cyber Command. The Army Cyber Command Headquarters located at Fort Eisenhower operates and defends Army networks and delivers cyberspace effects against adversaries to defend the nation. ARCYBER, led by Fort Eisenhower, conducts global operations 24/7 with approximately 16,500 Soldiers, civilian employees, and contractors worldwide. The Pentagon's 2013 announcement led to the relocation of the U.S. Army Cyber Command from Fort Meade in Maryland to Fort Eisenhower in Augusta. Fort Eisenhower is fast becoming a center for joint forces activities, training, and operations and is a huge employer in east Georgia. With a workforce of 31,155, much of the installation's annual economic impact of nearly \$2.4 billion goes directly into area shops, real estate, banks, and other businesses.

The Augusta Region has long been a hotbed for the tech- and cyber-related companies such as Unisys, ADP, and Raytheon.

Now, Augusta is home to the US Cyber Command at Fort Eisenhower and the newly completed Georgia Cyber Center, a \$100 million investment and the largest government cybersecurity facility in the United States. Located on the Nathan Deal Campus for Innovation, the center is a unique public/private partnership involving academia, state and federal government, law enforcement, the U.S Army, and the private sector. Other cyber-focused businesses are paying attention and taking advantage of the expanding field by moving their headquarters and establishing branches in the Augusta Region. The \$100 million Georgia Cyber Center, the single largest investment in a cybersecurity facility by a state government to date, is a unique public/private partnership involving academia, state and federal government, law enforcement, the U.S. Army and the private sector.



RICHMOND COUNTY, GA

Augusta, GA is in the midst of a renaissance of sorts fueled by a few different major drivers. One is the influx of all things cyber with the relocation of the U.S. Army's Cyber Command Headquarters to nearby Fort Gordon. This fairly recent development has and continues to fuel growth in the area, but has only served to accelerate a trend that was already underway. The city's downtown was already fastly developing, but now many more projects are set to break ground. The greater MSA, including surrounding Columbia and Richmond Counties on the GA side, and Aiken and Edgefield counties on the SC side, seem to all be seeing impacts in this already very affordable place to live.

Traditionally, Healthcare, Military, Manufacturing, Energy, and Customer Service have represented the primary nodes of the Augusta Economy. Cyber has recently taken its place at the table next to the others and has fueled much of the recent change. Amazon has plans for two separate distribution warehouses off of I-20 in Columbia County. Over 51,000 jobs are provided by healthcare alone in the Augusta MSA. Manufacturing entities in the area include EZ GO Textron, Kimberly-Clark, John Deere, Starbucks, Graphic Packaging, Cardinal Health, Kellogs and more. Entities like Sitel, ADP, Unisys and Taxslayer specialize in customer-service-based work. The economy is greatly supported by a couple of different large energy projects: Savannah River Site and Plant Vogle providing 12,000 and 6,000 jobs respectively.



\$46,237
MHI



205,673
Population



3.5%
Unemployment

AUGUSTA NATIONAL

Year after year during the first full week of April, golf fans descend on Augusta by the thousands. The annual event marks a boom for the local economy with over 200,000 average attendees. Augusta is known as the golf capital of the universe for good reason, and the love of golf extends well beyond the confines of Augusta National. It attracts politicians, athletes, musicians, Corporate CEOs, and many more which brings some of the world's most powerful people all in the same week to Augusta, GA.

Augusta National Golf Club sometimes referred to as Augusta or the National, is a golf club in Augusta, Georgia, United States. Unlike most private clubs which operate as non-profits, Augusta National is a for-profit corporation, and it does not disclose its income, holdings, membership list, or ticket sales. Founded by Bobby Jones and Clifford Roberts, the course was designed by Jones and Alister MacKenzie[3] and opened for play in 1932. Since 1934, the club has played host to the annual Master's Tournament, one of the four men's major championships in professional golf, and the only major played each year at the same course. It was the top-ranked course in Golf Digest's 2009 list of America's 100 greatest courses and was the number ten-ranked course based on course architecture on Golfweek Magazine's 2011 list of best classic courses in the United States.



MASTERS

DISCLAIMER

All materials and information received or derived from Meybohm Commercial Properties its directors, officers, agents, advisors, affiliates, and/or any third party sources are provided without representation or warranty as to completeness, veracity, or accuracy, condition of the property, compliance or lack of compliance with applicable governmental requirements, developability or suitability, the financial performance of the property, the projected financial performance of the property for any party's intended use or any and all other matters.□□

Neither Meybohm Commercial Properties its directors, officers, agents, advisors, or affiliates make any representation or warranty, express or implied, as to the accuracy or completeness of any materials or information provided, derived, or received. Materials and information from any source, whether written or verbal, that may be furnished for review are not a substitute for a party's active conduct of its own due diligence to determine these and other matters of significance to such party. Meybohm Commercial Properties will not investigate or verify any such matters or conduct due diligence for a party unless otherwise agreed in writing.□

Any party contemplating or under contract or in escrow for a transaction is urged to verify all information and to conduct their own inspections and investigations including through appropriate third-party independent professionals selected by such party. All financial data should be verified by the party including by obtaining and reading applicable documents and reports and consulting appropriate independent professionals. Meybohm Commercial Properties makes no warranties and/or representations

regarding the veracity, completeness, or relevance of any financial data or assumptions. Meybohm Commercial Properties does not serve as a financial advisor to any party regarding any proposed transaction. All data and assumptions regarding financial performance, including that used for financial modeling purposes, may differ from actual data or performance. Any estimates of market rents and/or projected rents that may be provided to a party do not necessarily mean that rents can be established at or increased to that level. Parties must evaluate any applicable contractual and governmental limitations as well as market conditions, vacancy factors, and other issues in order to determine rents from or for the property.□□

Legal questions should be discussed by the party with an attorney. Tax questions should be discussed by the party with a certified public accountant or tax attorney. Title questions should be discussed by the party with a title officer or attorney. Questions regarding the condition of the property and whether the property complies with applicable governmental requirements should be discussed by the party with appropriate engineers, architects, contractors, other consultants and governmental agencies. All properties and services are marketed by Meybohm Commercial Properties in compliance with all applicable fair housing and equal opportunity laws.

— FINEM GROUP OVERVIEW —

Finem- Latin Phrase meaning "consider the end": live so that your life will be approved after your death.

The Finem Group is a team of brokers and support staff at Meybohm Commercial who believe that everyone should be surrounded by a group of trusted advisors. With a team of three licensed commercial agents, a licensed investment analyst, a financial analyst intern, a professional photographer, and a transaction coordinator our team is vastly equipped to advise our clients on any of their real estate needs.

With our team of highly skilled agents and staff, we pride ourselves on being the best at what we do. We provide top-of-the-line photography, some of the best marketing packages, incredibly thorough and analytical valuations, and most importantly, honest and transparent advice to our clients. Like our team name, Finem, we aim to consider the end of every transaction we handle. We hope to live our lives in a way that honors our clients from the beginning to the end. For us, this isn't simply a job with a commission, it is our chance to help steward the assets of our clients in a way that will benefit them in the long run.

Based in Augusta, GA, The Finem Group has made a name for themselves as regional brokers in Georgia and South Carolina with plans to expand to other states.



Jonathan Aceves, CCIM, MBA
Finem Group
V.P./Senior Broker
Jaceves@meybohm.com
706-294-1757



John Eckley, MBA, Civil Eng.
Finem Group
V.P./Senior Broker
Jeckley@meybohm.com
706-305-0054



Dustin Wright
Finem Group
Commercial Advisor
Dwright@meybohm.com
706-830-8266



Stephen Long
Finem Group
Investment Analyst
Slong@meybohm.com
706-513-3840

MEET THE BROKERS



Jonathan Aceves,
CCIM, MBA

Jonathan serves as a Commercial Sales and Leasing Advisor with Meybohm Commercial. Originally licensed in 2005, Jonathan specializes in downtown development, portfolio planning, multifamily brokerage, and land & site selection. Jonathan's portfolio planning has mostly centered around advising owners with portfolios of commercial properties regarding sales and 1031 exchanges, along with underwriting potential transactions. Jonathan has worked extensively in Site Selection and Commercial Land Brokerage. Notable site selection clients include Domino's Pizza, SRP Federal Credit Union, Hardees, Popeyes, Whit's Frozen Custard, and many others. Jonathan's approach to site selection differs from that of many of his competitors in that he starts from a list of all potential sites, rather than simply on-market sites. This tends to be more work but has led to finding off-market ideal locations for his clients. Jonathan also focuses on Multifamily brokerage, with his track record including numerous downtown duplexes and quads, along with Cedar Pines Apartments and Ridgewood Apartments. His approach with multifamily is to reduce the work required by a buyer to underwrite—leading to faster sales and higher prices.



John Eckley,
MBA, Civil Eng.

Consultative, client-focused, and analytical, John is an industrial and commercial advisor for Meybohm Commercial, where his aim is to guide clients in accomplishing their greater collective financial goals, through portfolio planning, deal analysis, and excellent client service. John earned his MBA and civil engineering degrees from Clemson University and is in the final stages of pursuing his CCIM (Certified Commercial Investment Member) designation. It's a combination of experience held by only John and his team member Jonathan Aceves in the Augusta market. John's extensive experience and training in solving real-world problems are what direct him in developing client strategies for real estate investments. John's specialties include industrial warehouse and flex-space properties, land & site selection, and general commercial work. He also partners with clients on their 1031 exchanges and sale leasebacks and serves the medical community for both investment and office needs. His approach is unique because it combines his process-oriented, engineering brain with his interest in developing strong relationships with clients.

MEET THE BROKERS



Dustin Wright
Commercial Advisor

Dustin joins Meybohm Commercial and will be working to represent his clients in land site selection, development, and retail/industrial property brokerage. He most recently worked in the Central Nervous System division of Abbvie Pharmaceuticals where he advised Health Care Providers in the CSRA. Prior to pharmaceuticals, Dustin was a Territory Manager for Richmond Supply Company where he served the Kaolin, Lumber, Farming, Chemical, Power, and Water industries. Dustin joined the U.S. Navy as a Yeoman after graduating from Harlem High School. He received an AS in Business Administration from Georgia Military College and BS in Industrial/Business from Southern Polytech. He was previously a Project Manager in the Industrial/Commercial Construction sector in both Augusta and Atlanta and has also provided scheduling analytical work for Southern Nuclear Company. Dustin enjoys strategizing, and solving problems and doesn't meet many strangers. He resides in the Summerville Historic District with his amazing wife Caroline and their two children, Cole and Emmaline. Dustin believes that strong faith, integrity, and honesty are the keys to success in any business. He is an active member of the First Presbyterian Church of Augusta and enjoys golf, fishing, hunting, and spending time with friends and family.



Stephen Long
Financial Analyst

Stephen joined the team at Meybohm Commercial two years ago as a financial analyst. In college, he earned his real estate license and began as a residential agent on the side while he focused on graduating college. He graduated from Augusta University with a BS in Corporate Finance and he has two certifications in financial modeling. One is ACRE's commercial real estate financial modeling course (one of the most sought-after CRE modeling certifications) and he has CFI's FMVA (financial modeling valuation analyst) certification which is a sought-after certification for corporate financial modeling. He is in the process of completing two other certifications as he believes that in order to be an excellent analyst he needs to be continuously growing his skills. Along with the team's analysis and underwriting, Stephen is also in charge of creating all Offering Memorandums and informational content. In his free time, Stephen loves to read, work out, and watch movies. Additionally, for the past year, he has been learning Spanish with the goal of becoming fluent in the future. Lastly, he has volunteered for Younglife, a nonprofit, for 6 years.

**For inquiries,
contact us.**



www.finemgroup.com
finem@meybohm.com
706.305.0054

HOW WE HELP OUR CLIENTS

REGIONAL EXPERTISE MEETS ADVANCED DATA & MARKETING



REGIONAL EXPERTISE & KNOWLEDGE

By way of our particular regional focus on warehouse space, we are track space availabilities, tenant needs, off-market properties and more.



TOP-OF-MARKET LISTING PRESENTATION

We aim to present all of our listings in a manner that allows the highest and best user to understand if they should be intersted in a matter of seconds.



EXPERIENCED NEGOTIATORS/DEAL-MAKERS

We negotiated on behalf of our clients, making sure their best interests are closely guarded, while creatively working with others to get deals done!



SEGMENTED, DETERMINED MARKETING

Our proprietary database of regional businesses, tenants and buyers affords us the ability target and market our listings directly to those most likely to be in need.



BUSINESS-MINDED EXPERTISE

We are a team of SIOR & CCIM-educated brokers with MBAs and with experience running our own businesses



DATA-DRIVEN DECISION-MAKING

The numbers speak for themselves and we dig deep to understand ROI/IRR, so you can know the best course given the data