

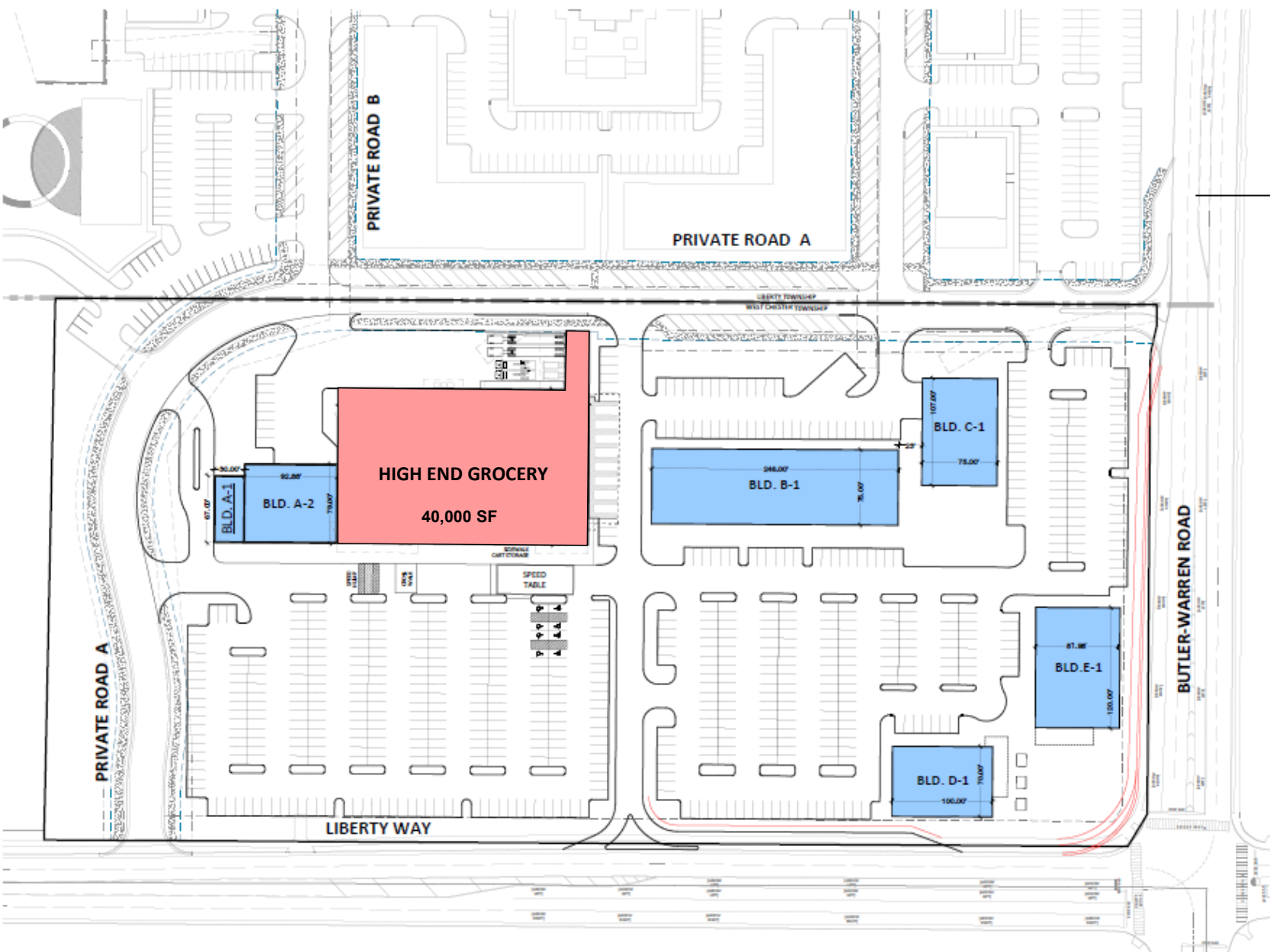
VILLAGE NORTH



- LEGEND**
- TOWNHOMES
 - MULTI-FAMILY HOUSING
 - GROCERY
 - RESTAURANT
 - RETAIL/ RESTAURANT
 - OFFICE
 - CONVENIENCE STORE
 - SINGLE FAMILY LOTS



VILLAGE NORTH MSP
 SITE PLAN RENDERING DESIGN
 PROJECT NUMBER: 06428.10 | DATE: 05.18.23 **McGill Smith Punshon**



SITE DEVELOPMENT SUMMARY

GROCERY STORE: 40,000 SF

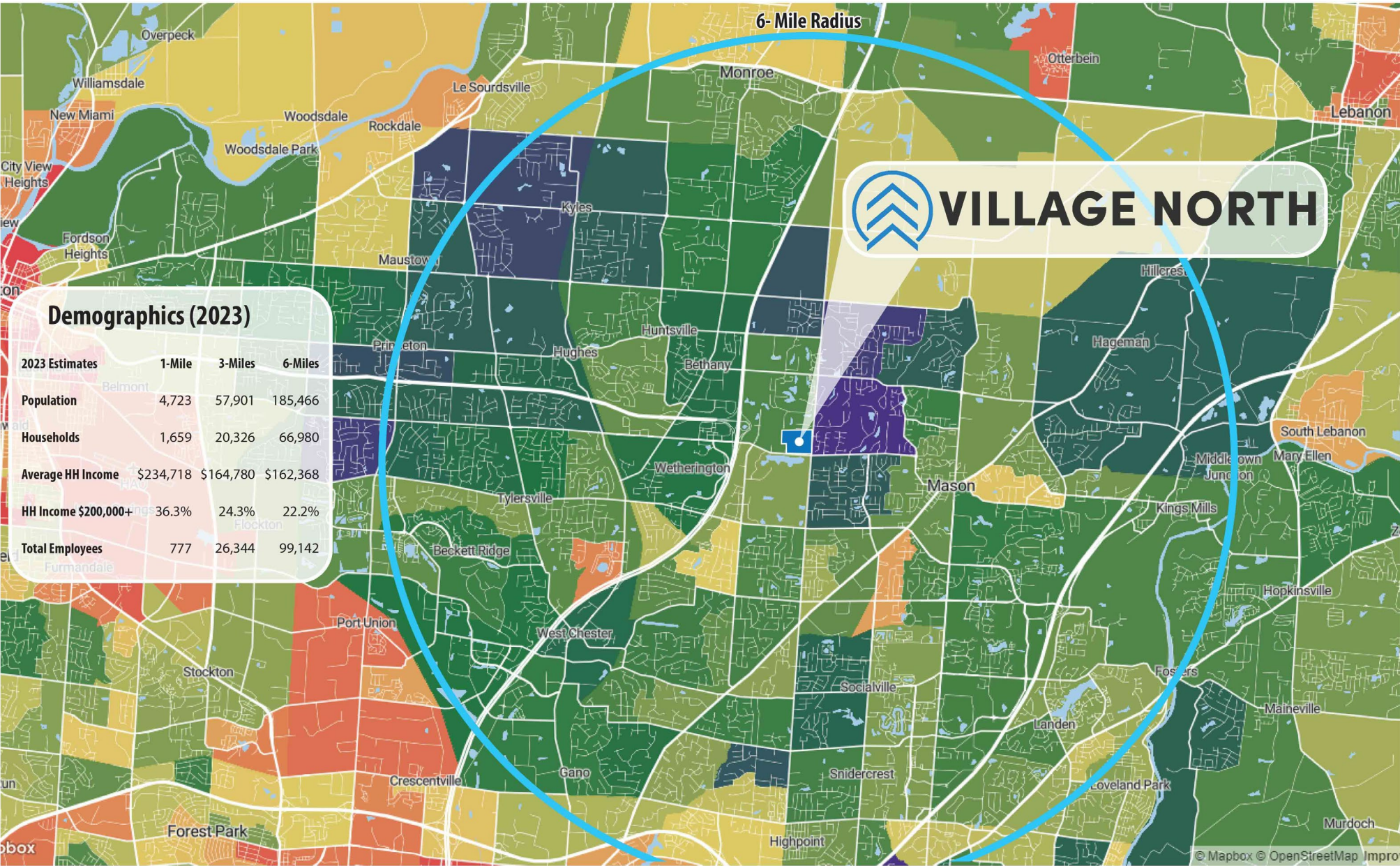
COMMERCIAL:

BUILDING A-1 2,000 SF
 BUILDING A-2 7,000 SF
 BUILDING B-1 18,500 SF
 BUILDING C-1 8,000 SF
 BUILDING D-1 10,000 SF
 BUILDING E-1 7,000 SF

92,500 SF

TOTAL AREA 13.607 AC.
TOTAL BUILDING AREA 2.12 AC.
TOTAL PARKING 635 STALLS
PARKING RATIO 6.865/1000 SF





Demographics (2023)

2023 Estimates	1-Mile	3-Miles	6-Miles
Population	4,723	57,901	185,466
Households	1,659	20,326	66,980
Average HH Income	\$234,718	\$164,780	\$162,368
HH Income \$200,000+	36.3%	24.3%	22.2%
Total Employees	777	26,344	99,142

Household Income Key

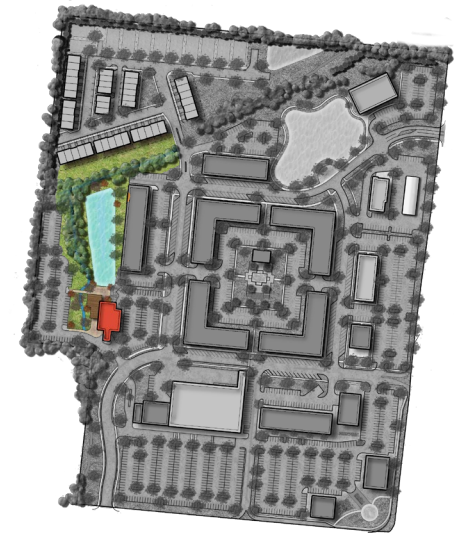


VILLAGE NORTH

- Projected Opening Fall 2025
- 90,000 SF of Retail Space Available
- 450 Multi Family Units and Townhomes Planned
- Near Liberty Center, Cabela's, Children's Hospital, UC Health, Tri-Health, and New Costco – *Open now!*
- Great Visibility, Access, and High Incomes
- Perfect for Retail - Restaurants - Professional Offices
- Butler County - Liberty Township & West Chester Township - No Earnings Tax



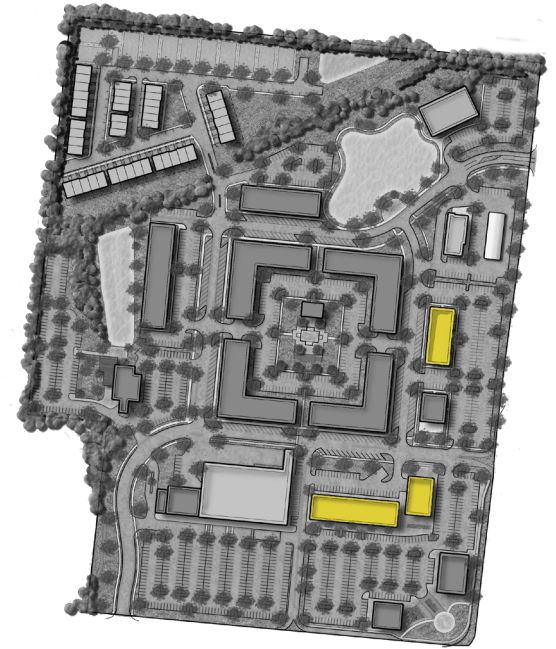
BREWERY/DISTILLERY



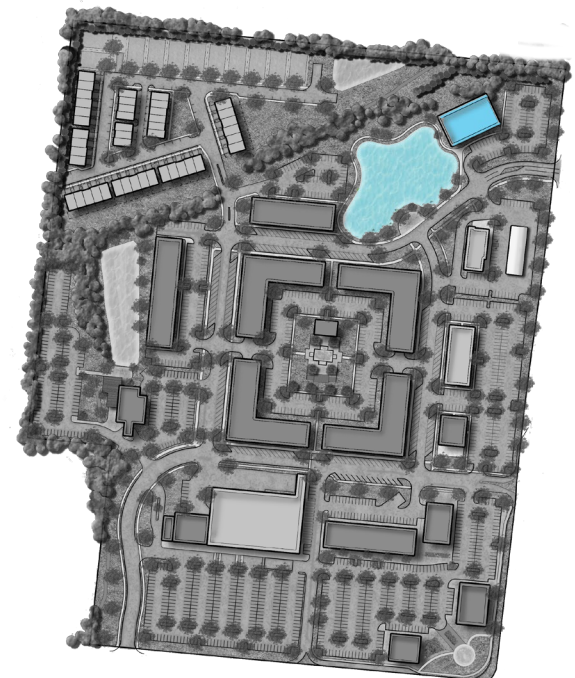
RESTAURANTS



RETAIL



OFFICE





This document has been prepared by Lee & Associates and has been approved for distribution by all necessary parties. Although effort has been made to provide accurate information from sources deemed reliable regarding the property for sale, no warranty or representation is made to the accuracy thereof and same is submitted to errors, omissions, change of price, rental or other conditions prior to sale, lease or financing or withdrawal without notice. No liability of any kind is to be imposed on the broker herein. Documents may have been referred to in summary form and these summaries do not purport to represent or constitute a legal analysis of the contents of the applicable documents. Lee & Associates does not represent that this document is all inclusive or contains all the information you may require. Any financial projections and/or conclusions presented herein are provided strictly for reference and have been developed based upon assumptions and conditions in effect at the time the evaluations were undertaken. They do not purport to reflect changes in economic performance, local market conditions, economic and demographic statistics, or further business activities since the date of preparation of this document. Recipients of this document are urged to undertake their own independent evaluation of the subject and/or asset(s) being shared in this document.

EXCLUSIVELY LISTED BY:

Grant Mechlin, CCIM
gmechlin@sansonegroup.com
D 314.727.6664

TC Bartoszek
tc@lee-associates.com
D 513.588.1840

Molly Hoffman
mhoffman@lee-associates.com
D 513.588.1843

