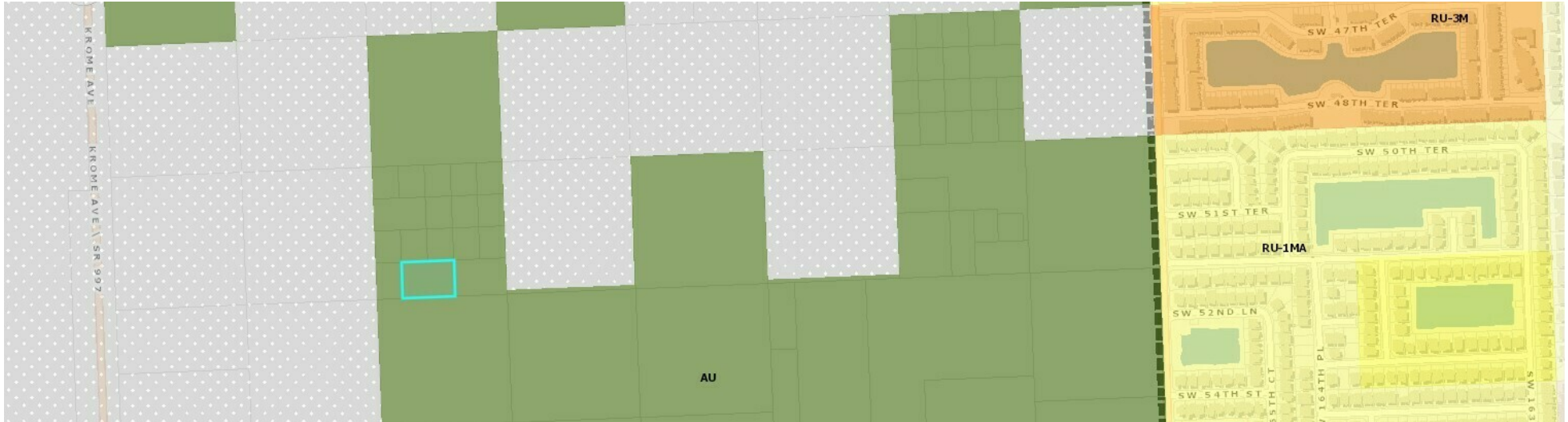


# ACRE IN MIAMI-DADE

LOT 17 & 18 MIAMI EVERGLADE LAND CO, MIAMI, FL 33185



## PROPERTY DESCRIPTION

This 1-acre parcel in the Miami Everglades Land Co subdivision offers an excellent investment opportunity. It is situated just outside the Urban Development Boundary and east of Krome Blvd, providing a rare chance to invest in Miami's future growth. The property is zoned for Agriculture, which presents numerous possibilities for agricultural ventures or as a future development site. If you're looking to invest in land with promising future potential, this parcel is the perfect blend of opportunity and foresight in Miami's dynamic real estate landscape. Buy Land!

## PROPERTY HIGHLIGHTS

- Prime 1-Acre Miami Investment Opportunity
- Agriculture-Zoned: Diverse Potential Uses
- Outside UDB: Future Growth Potential
- Buy Land

## OFFERING SUMMARY

|             |          |
|-------------|----------|
| Sale Price: | \$92,000 |
| Lot Size:   | 1 Acres  |



360 REAL ESTATE

Each office independently owned and operated

**BILLY PLANES**  
Broker - Owner - CCIM  
305.772.8513  
bplanes@remax.net

4217 Ponce De Leon Blvd  
Coral Gables, FL 33146-1826

305.602.0360 REMAX.COM

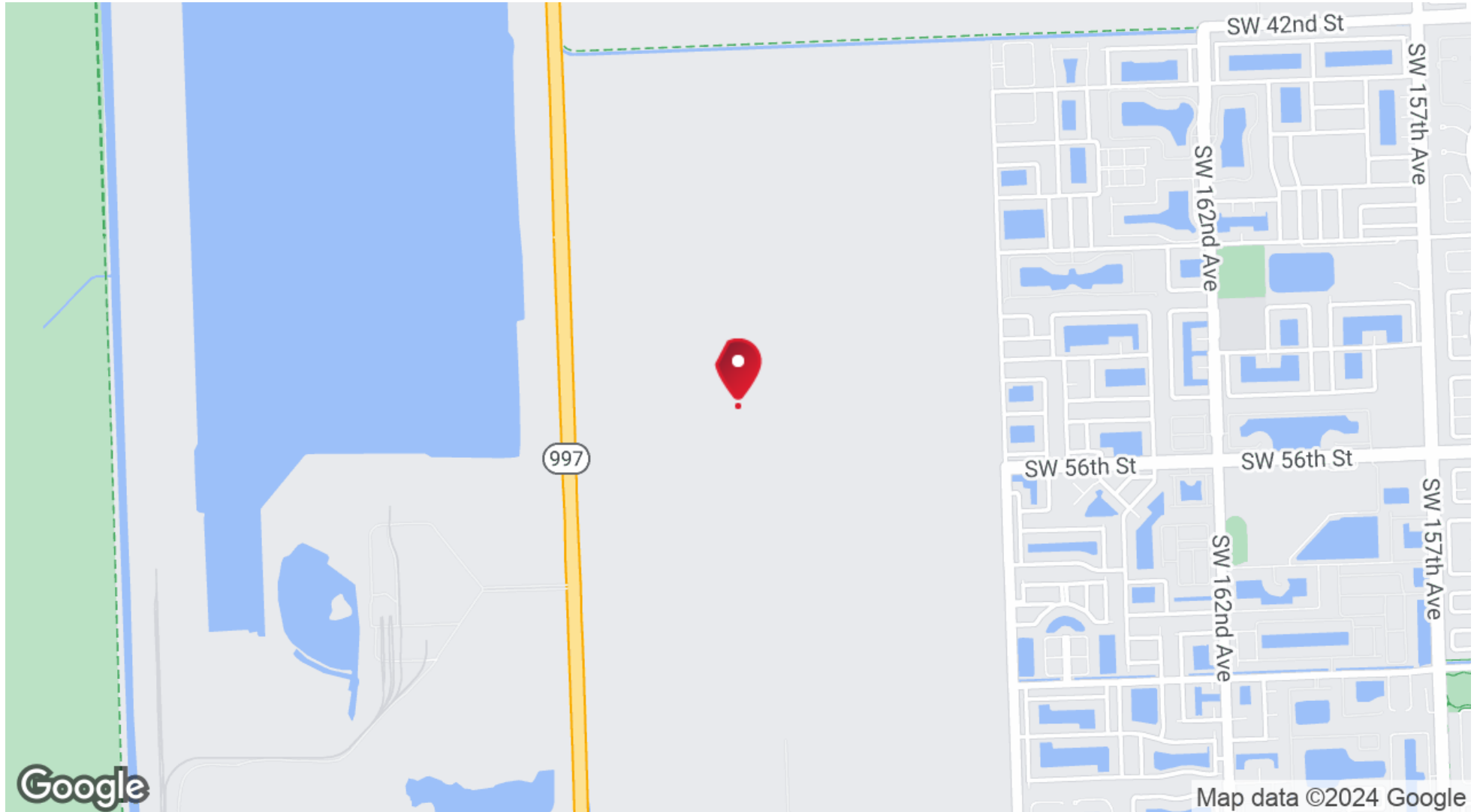
FOR SALE

AGRICULTURE

LOCATION MAP

# ACRE IN MIAMI-DADE

LOT 17 & 18 MIAMI EVERGLADE LAND CO, MIAMI, FL 33185



360 REAL ESTATE

Each office independently owned and operated

**BILLY PLANES**

Broker - Owner - CCIM

305.772.8513

bplanes@remax.net

4217 Ponce De Leon Blvd  
Coral Gables, FL 33146-1826

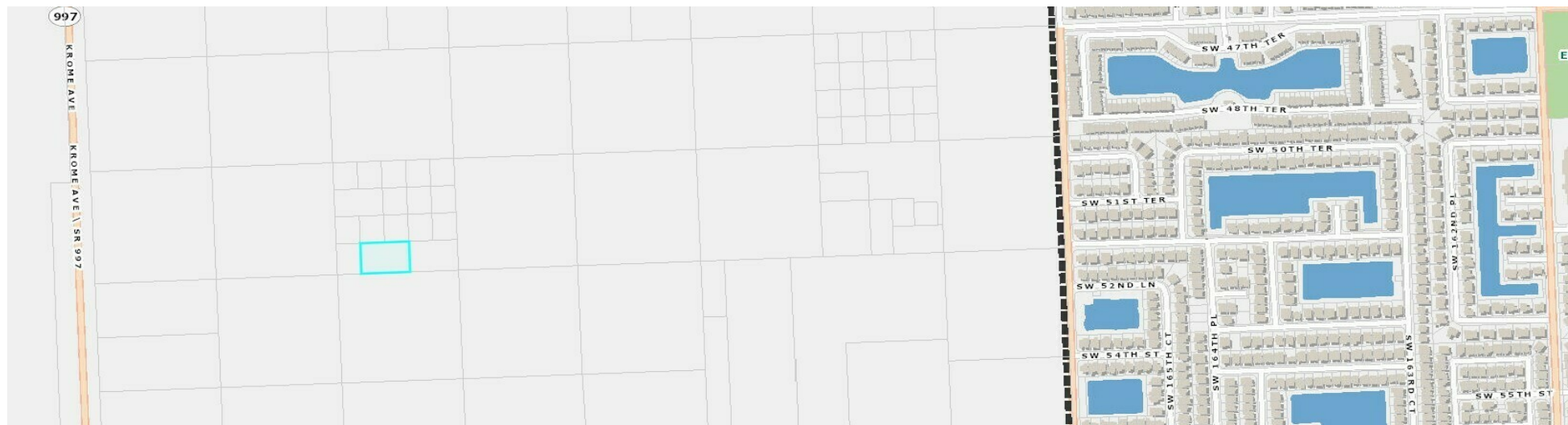
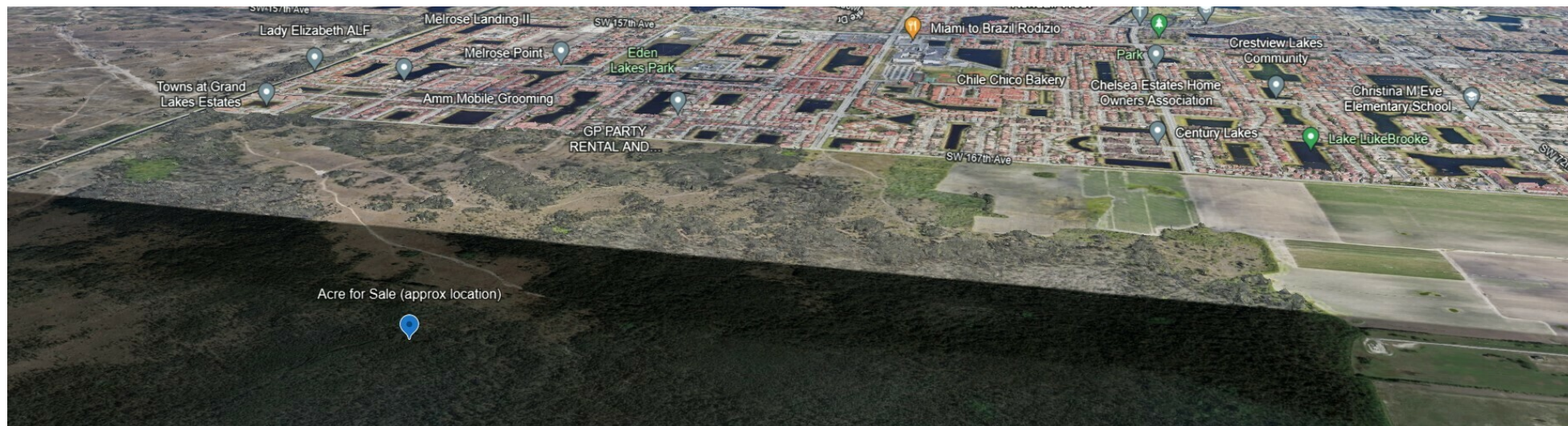
305.602.0360

REMAX.COM

All information contained herein is deemed reliable but not guaranteed. Each office independently owned and operated

# ACRE IN MIAMI-DADE

LOT 17 & 18 MIAMI EVERGLADE LAND CO, MIAMI, FL 33185



360 REAL ESTATE

Each office independently owned and operated

**BILLY PLANES**

Broker - Owner - CCIM

305.772.8513

bplanes@remax.net

4217 Ponce De Leon Blvd  
Coral Gables, FL 33146-1826

305.602.0360

REMAX.COM