

164 LINCOLN HIGHWAY

Fairless Hills, PA 19030



FOR LEASE



3 OFFICE SUITES



1,270 SF -2,490 SF



PROPERTY DESCRIPTION

- SUITE 203: 1,270 SF AVAILABLE NOW
- NEW TO MARKET: Suite 101 - 2,490 SF & Suite 102 - 1,560 SF
- Pylon signage
- Two-story, elevator served, multi-tenanted office building
- Close to shopping, restaurants, banks, hotels, the Oxford Valley Mall and Sesame Place via Business Route 1/Lincoln Highway
- Located on highly traveled Lincoln Highway
- Only 1/2 mile from Oxford Valley Mall and Aria Health-Bucks County
- 5 minutes from Interstate 95 and US Route 1

FOR MORE INFORMATION

Zena Charokopos

☎ 215.396.2900 x103

✉ zena.charokopos@naimertz.com

Joe Sternberg

☎ 215.396.2900 x107

✉ joe.sternberg@naimertz.com

NAI MERTZ DISCLAIMER: NO WARRANTY OR REPRESENTATION, EXPRESS OR IMPLIED, IS MADE AS TO THE ACCURACY OF THE INFORMATION CONTAINED HEREIN, AND THE SAME IS SUBMITTED SUBJECT TO ERRORS, OMISSIONS, CHANGE OF PRICE, RENTAL OR OTHER CONDITIONS, PRIOR SALE, LEASE OR FINANCING, OR WITHDRAWAL WITHOUT NOTICE, AND OF ANY SPECIAL LISTING CONDITIONS IMPOSED BY OUR PRINCIPALS NO WARRANTIES OR REPRESENTATIONS ARE MADE AS TO THE CONDITION OF THE PROPERTY OR ANY HAZARDS CONTAINED THEREIN ARE ANY TO BE IMPLIED. OUTLINES ARE APPROXIMATE AND SHOWN ONLY TO IDENTIFY THE PARCEL IN CONSIDERATION.

NAIMertz



210 E. Street Road, Suite 3B
Feasterville-Trevose, PA 19053
215-396-2900 | naimertz.com



164 LINCOLN HIGHWAY

164 Lincoln Highway Fairless Hills, PA 19030



FOR LEASE



2 OFFICE SUITES



1,560 SF & 2,490 SF

NEW LISTINGS!

OCCUPIED
PA AUTO CREDIT



1ST
FLOOR

FOR MORE INFORMATION

Zena Charokopos

215.396.2900 x103

zena.charokopos@naimertz.com

Joe Sternberg

215.396.2900 x107

joe.sternberg@naimertz.com

NAI MERTZ DISCLAIMER: NO WARRANTY OR REPRESENTATION, EXPRESS OR IMPLIED, IS MADE AS TO THE ACCURACY OF THE INFORMATION CONTAINED HEREIN, AND THE SAME IS SUBMITTED SUBJECT TO ERRORS, OMISSIONS, CHANGE OF PRICE, RENTAL OR OTHER CONDITIONS, PRIOR SALE, LEASE OR FINANCING, OR WITHDRAWAL WITHOUT NOTICE, AND OF ANY SPECIAL LISTING CONDITIONS IMPOSED BY OUR PRINCIPALS NO WARRANTIES OR REPRESENTATIONS ARE MADE AS TO THE CONDITION OF THE PROPERTY OR ANY HAZARDS CONTAINED THEREIN ARE ANY TO BE IMPLIED. OUTLINES ARE APPROXIMATE AND SHOWN ONLY TO IDENTIFY THE PARCEL IN CONSIDERATION.

NAIMertz



210 E. Street Road, Suite 3B
Feasterville-Trevose, PA 19053
215-396-2900 | naimertz.com



164 LINCOLN HIGHWAY

Fairless Hills, PA 19030



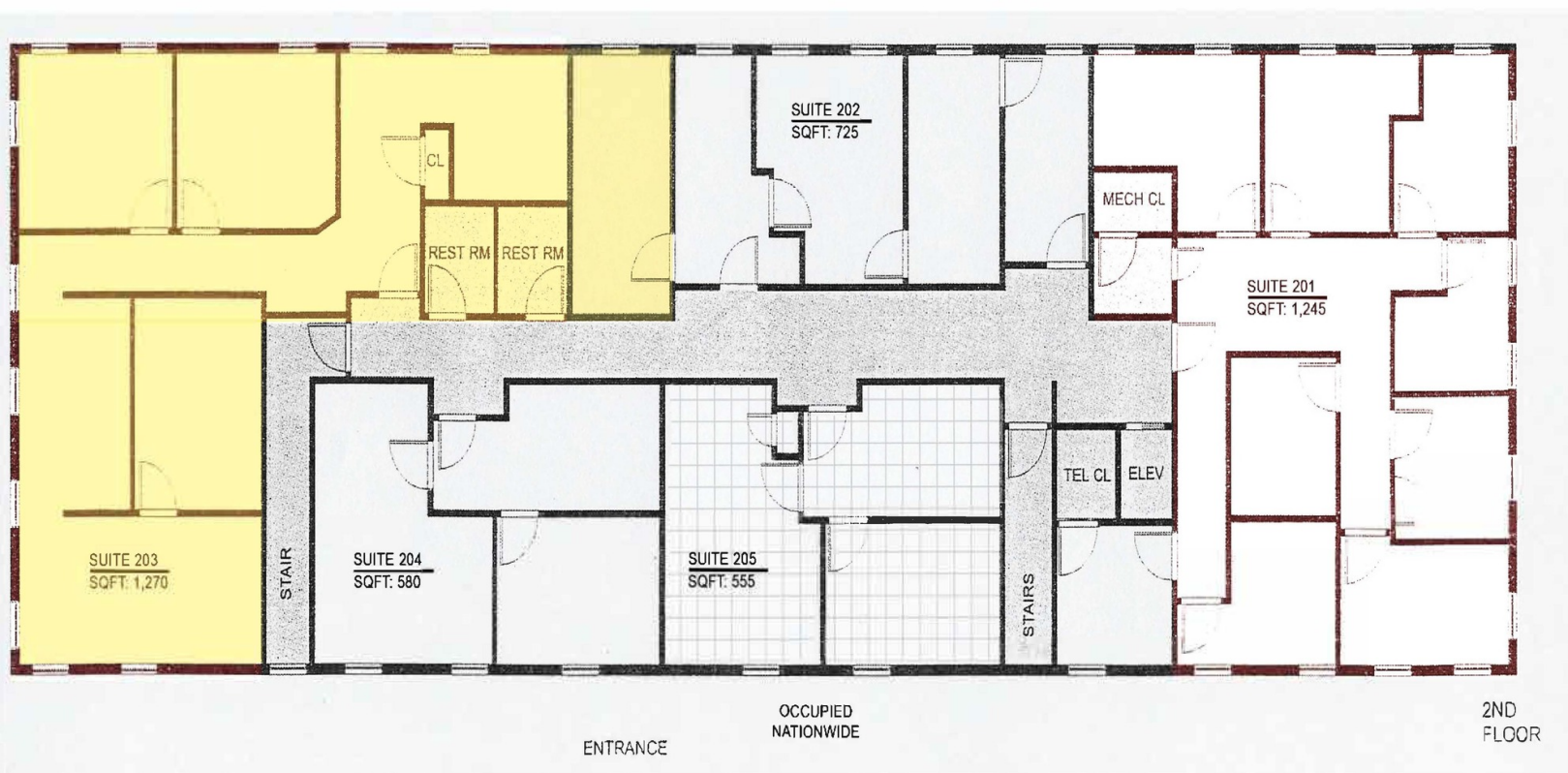
FOR LEASE



1 OFFICE SUITE



1,270 SF



FOR MORE INFORMATION

Zena Charokopos

215.396.2900 x103

zena.charokopos@naimertz.com

Joe Sternberg

215.396.2900 x107

joe.sternberg@naimertz.com

NAI MERTZ DISCLAIMER: NO WARRANTY OR REPRESENTATION, EXPRESS OR IMPLIED, IS MADE AS TO THE ACCURACY OF THE INFORMATION CONTAINED HEREIN, AND THE SAME IS SUBMITTED SUBJECT TO ERRORS, OMISSIONS, CHANGE OF PRICE, RENTAL OR OTHER CONDITIONS, PRIOR SALE, LEASE OR FINANCING, OR WITHDRAWAL WITHOUT NOTICE, AND OF ANY SPECIAL LISTING CONDITIONS IMPOSED BY OUR PRINCIPALS NO WARRANTIES OR REPRESENTATIONS ARE MADE AS TO THE CONDITION OF THE PROPERTY OR ANY HAZARDS CONTAINED THEREIN ARE ANY TO BE IMPLIED. OUTLINES ARE APPROXIMATE AND SHOWN ONLY TO IDENTIFY THE PARCEL IN CONSIDERATION.

NAIMertz



210 E. Street Road, Suite 3B
Feasterville-Treves, PA 19053
215-396-2900 | naimertz.com

